

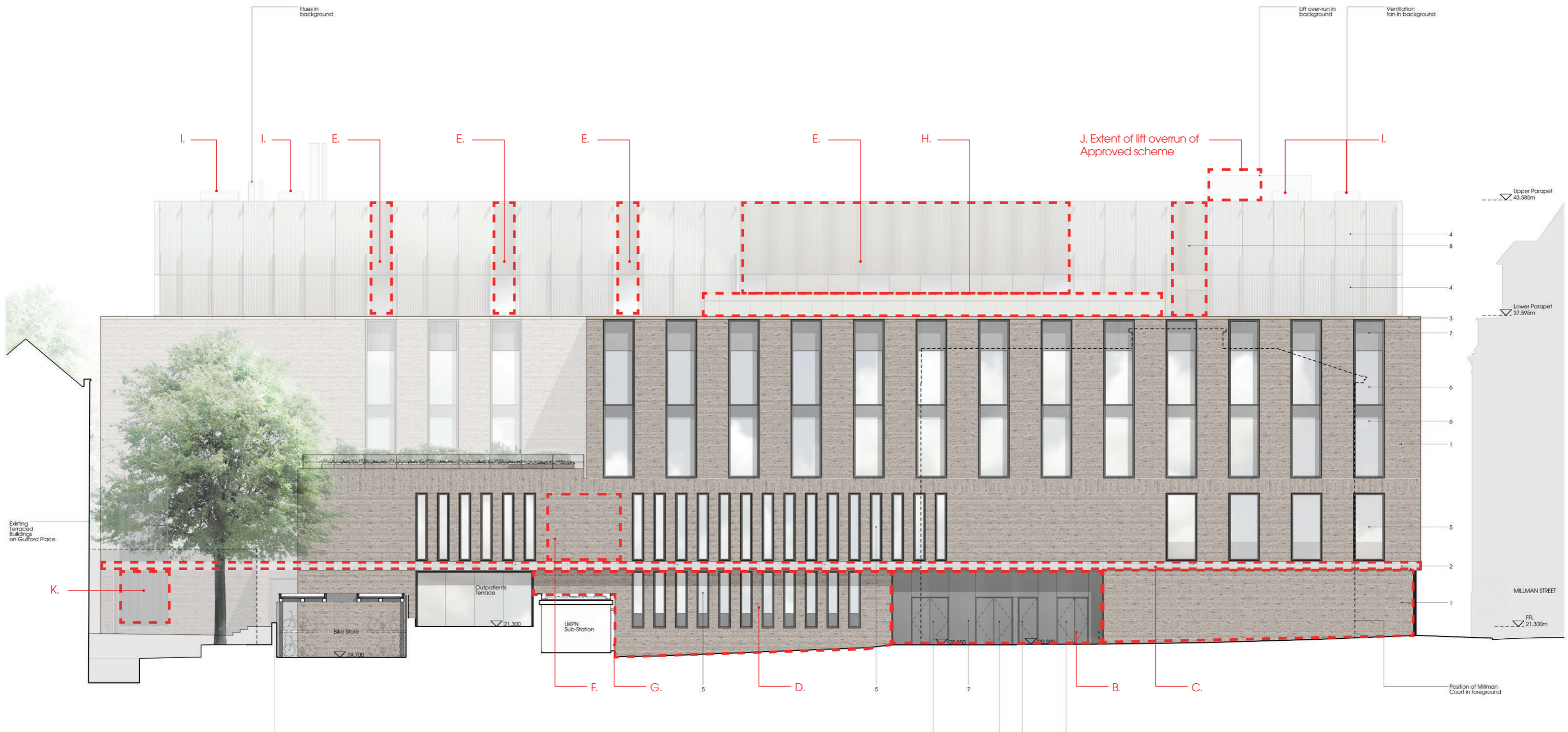
3.0 General Amendments



Approved Design - South elevation

- Key:
1. External facing brickwork
 2. Precast concrete fascia
 3. Terracotta cladding
 4. Glass rainscreen
 5. Glazing flush with brickwork
 6. Recessed metal framed glazing
 7. Metal cladding
 8. Metal louvres

3.0 General Amendments



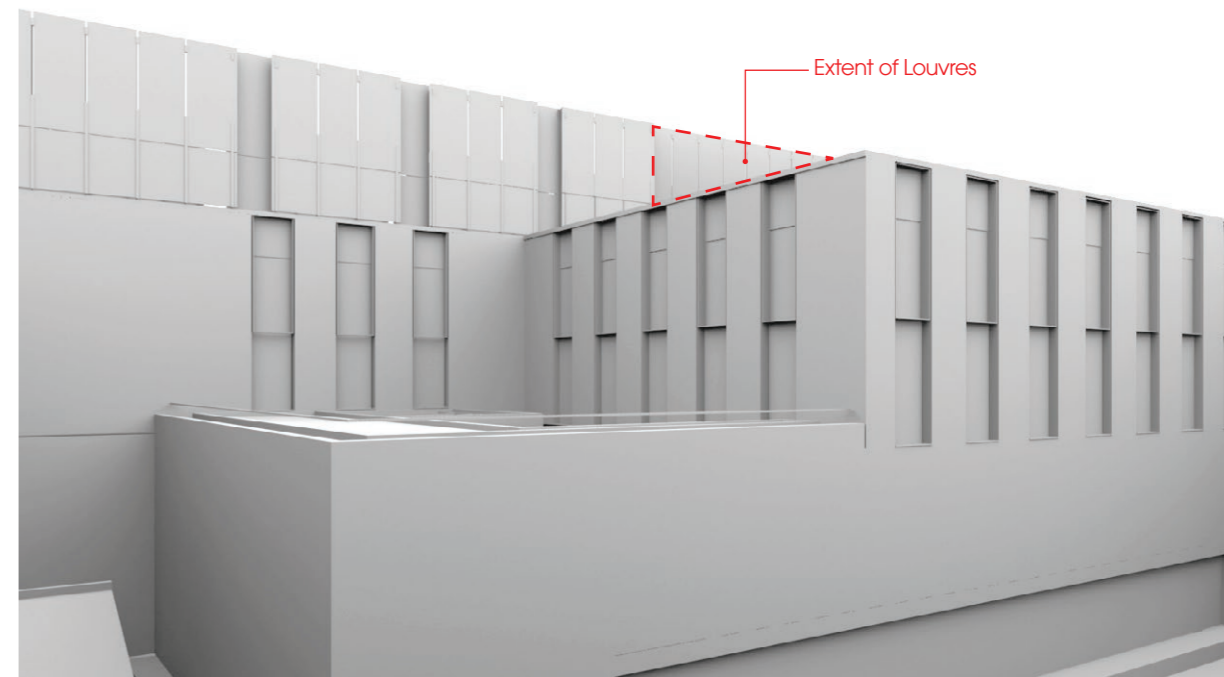
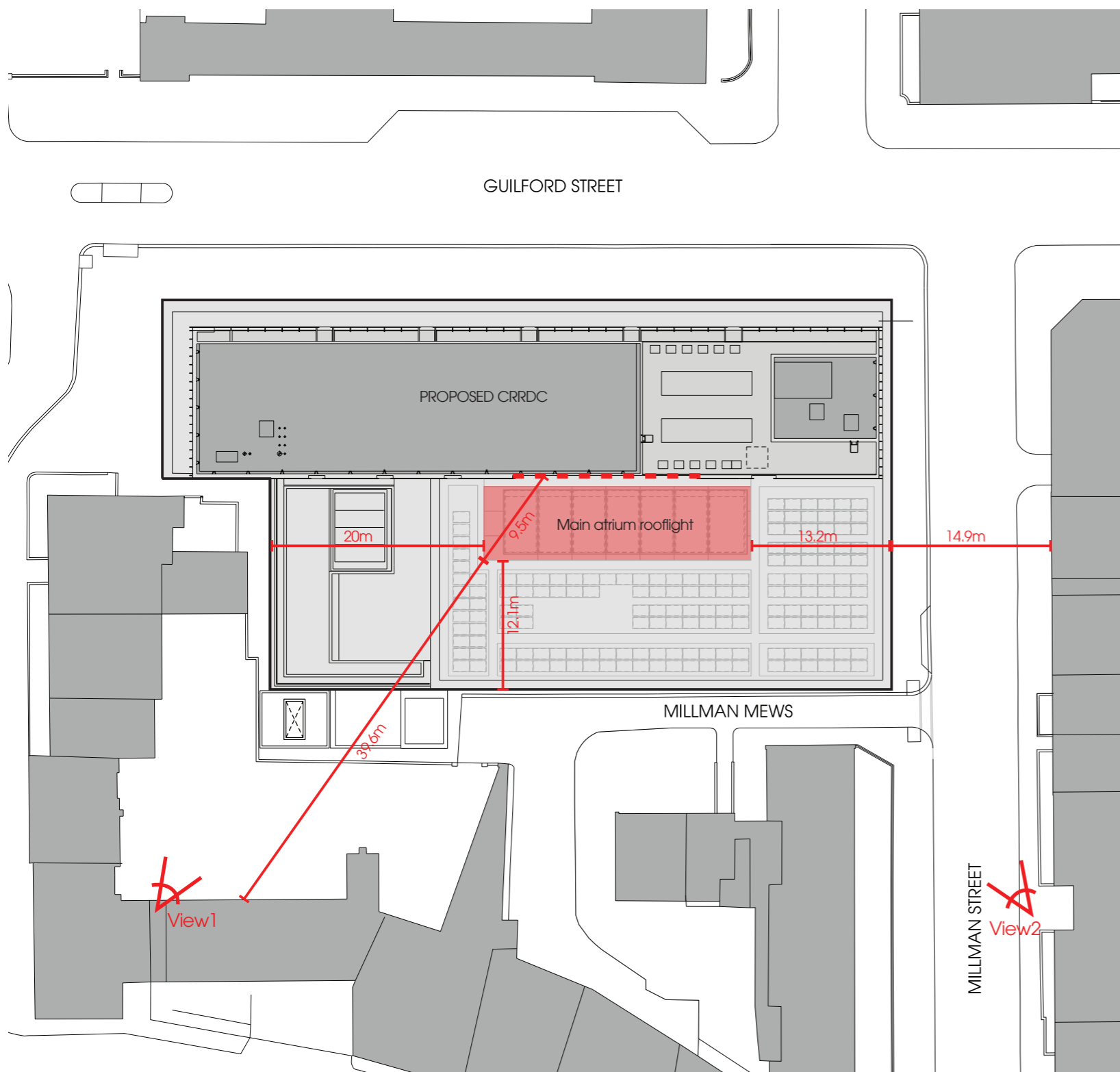
Proposed Design Changes - South elevation

- B. Metal louvred doors and cladding to Core 2 escape doors and HV switchroom changed to flat metal cladding
- C. GRC in lieu of precast cladding to first floor fascia
- D. Stretcher bond in lieu of English bond brickwork on ground floor
- E. GMP: extent of louvres on level 5 revised to suit MEP design for plant areas.
- F. Five less slot windows on ground and first floor on the south elevation as a result of setting out building to brick dimensions and structural coordination
- G. Metal cladding to stand-alone substation omitted. Substation to be painted in colour to match other metalwork on ground floor.
- H. Main atrium rooflight raised to incorporate smoke extract louvres
- I. Ventilation fans added on roof level
- J. Lift overrun dimensions changed
- K. Additional ventilation louvres

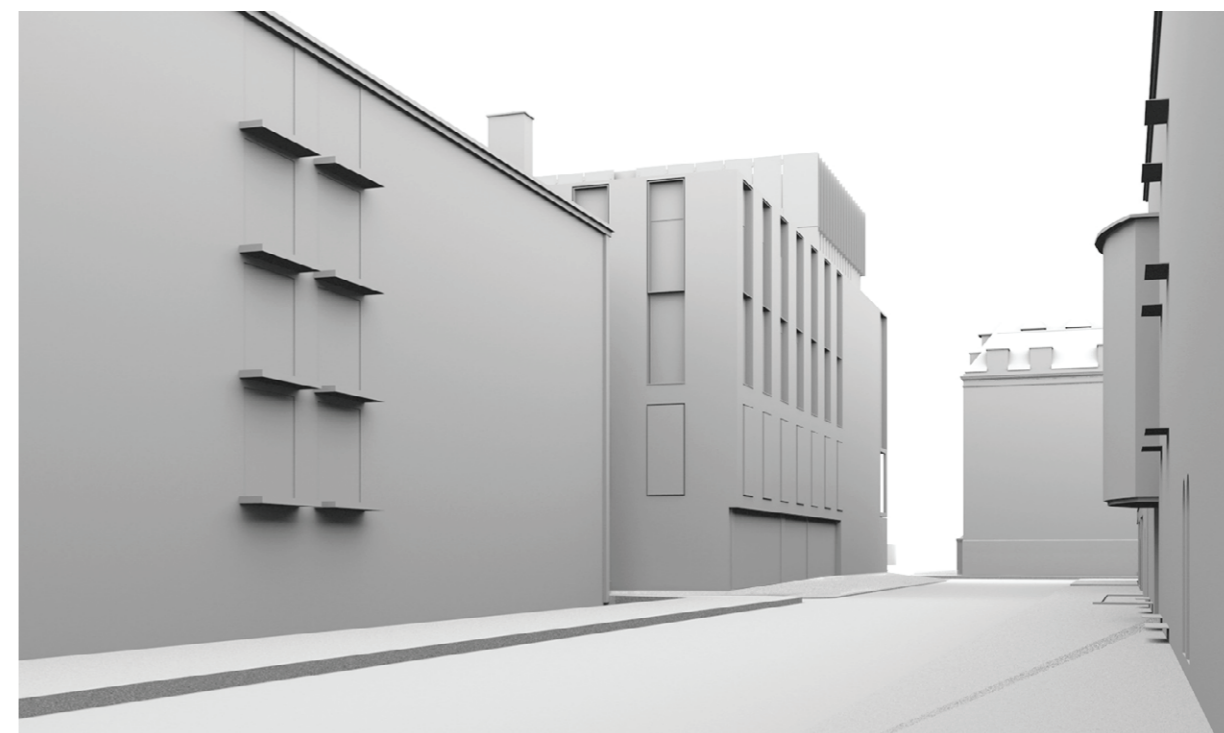
Key:

1. External facing brickwork
2. GRC fascia
3. Terracotta cladding
4. Glass rainscreen
5. Glazing flush with brickwork
6. Recessed metal framed glazing
7. Metal cladding
8. Metal louvres

3.0 General Amendments



View 1 - from Rokeby House third floor windows



View 2 - from Millman Street

Proposed Design - South elevation

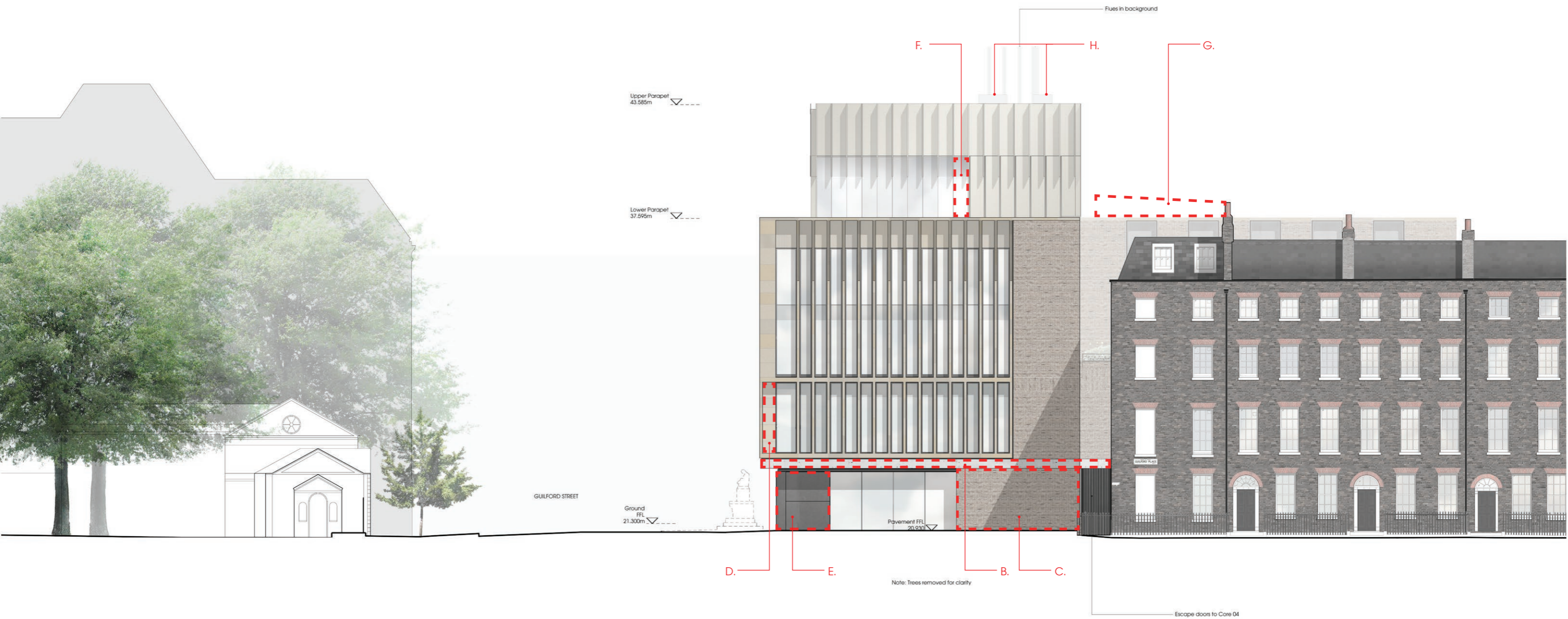
Main atrium rooflight and full extent of louvres on fifth floor will not be visible from neighbouring properties

3.0 General Amendments



Approved Design - West elevation

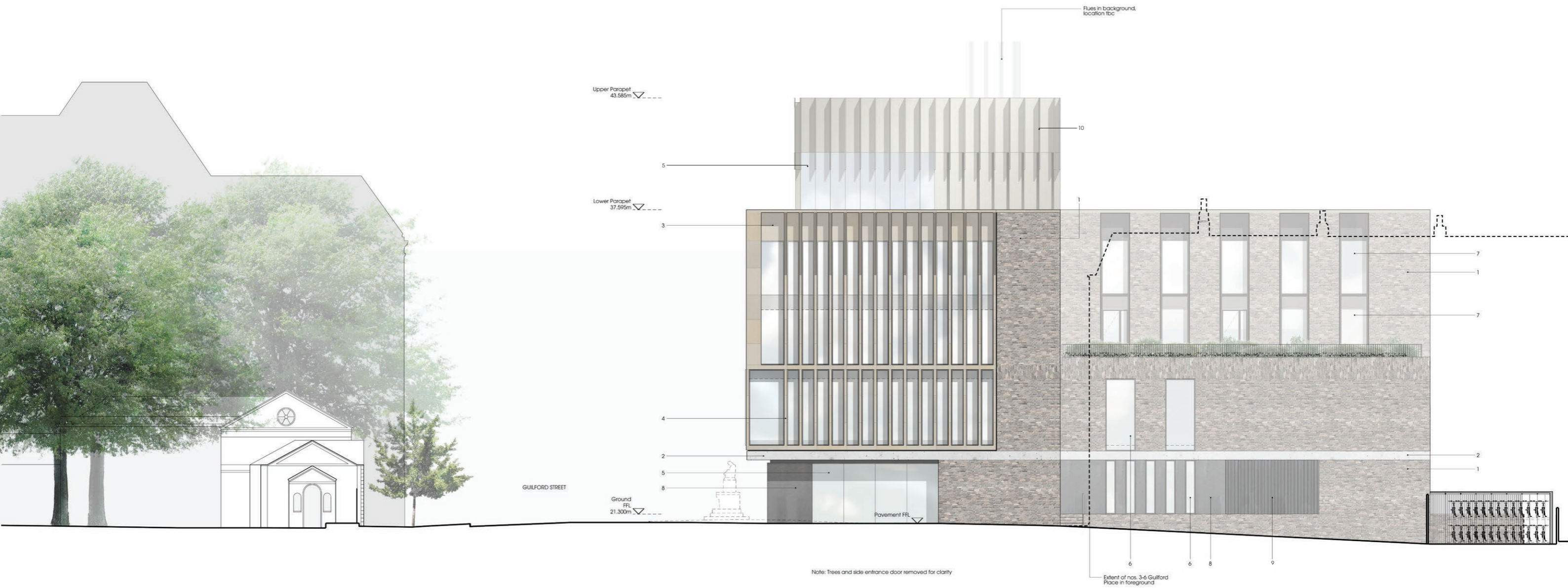
3.0 General Amendments



Proposed Design Changes - West elevation

- B. GRC in lieu of precast cladding to first floor fascia
- C. Stretcher bond in lieu of English bond brickwork on ground floor
- D. Terracotta fin corner detail rationalised on first floor
- E. Extent of metal cladding on ground floor increased
- F. Glazing on fourth floor extended to suit internal layout
- G. Main atrium rooflight raised to incorporate smoke extract louvres
- H. Ventilation fans added on roof level

3.0 General Amendments

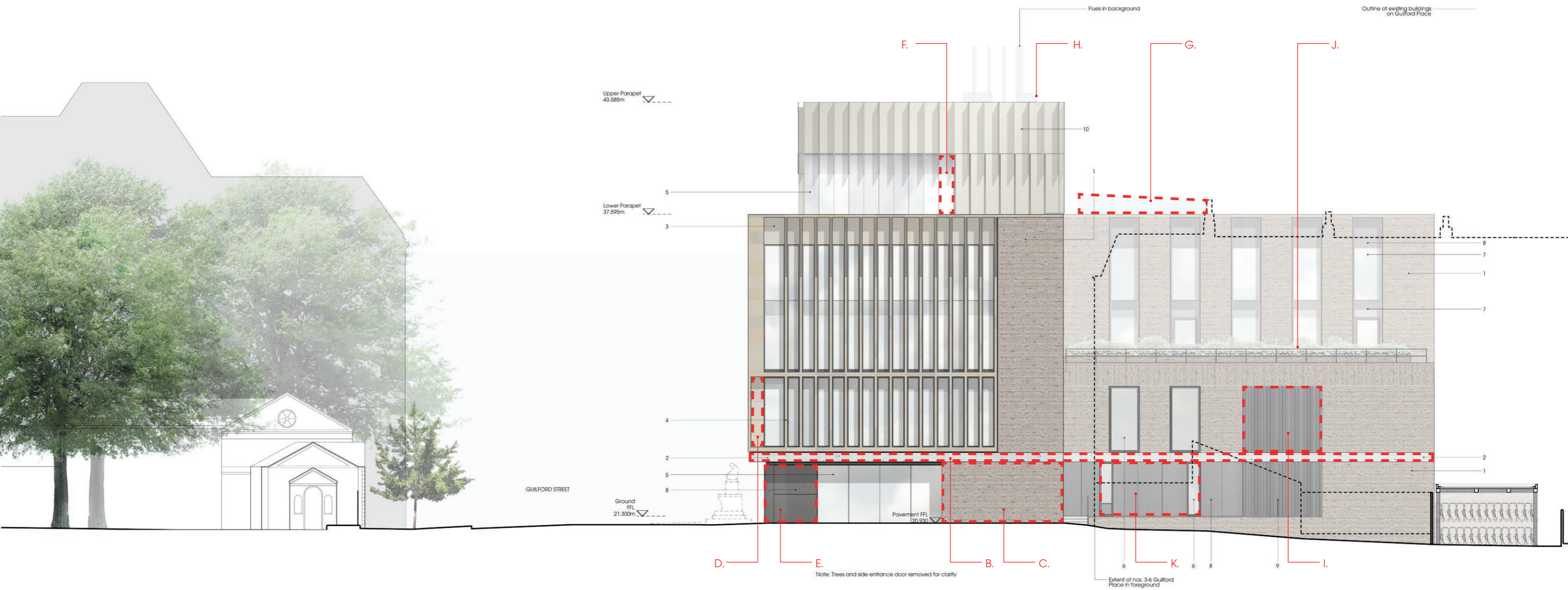


Approved Design - West elevation (Guilford Place terraces removed)

Key:

1. External facing brickwork
2. Precast concrete fascia
3. Terracotta cladding
4. Terracotta fins
5. Flush curtain walling
6. Glazing flush with brickwork
7. Recessed metal framed glazing
8. Metal cladding
9. Metal louvres
10. Metal cladding with projecting metal fins

3.0 General Amendments



Proposed Design Changes - West elevation (Guilford Place terraces removed)

- B. GRC in lieu of precast cladding to first floor fascia
- C. Stretcher bond in lieu of English bond brickwork on ground floor
- D. Terracotta fin corner detail rationalised on first floor
- E. Extent of metal cladding on ground floor increased
- F. Glazing on fourth floor extended to suit internal layout
- G. Main atrium rooflight raised to incorporate smoke extract louvres
- H. Ventilation fans added on roof level
- I. Intake louvres added on the first floor west elevation to suit MEP design
- J. Balustrade to second floor terrace simplified (west elevation only)
- K. 3 windows removed on ground floor



Example of metal louvres

Key:

1. External facing brickwork
2. Precast concrete fascia
3. Terracotta cladding
4. Terracotta fins
5. Curtain walling
6. Glazing flush with brickwork
7. Recessed metal framed glazing
8. Metal cladding
9. Metal louvres
10. Metal cladding with projecting metal fins