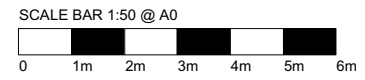


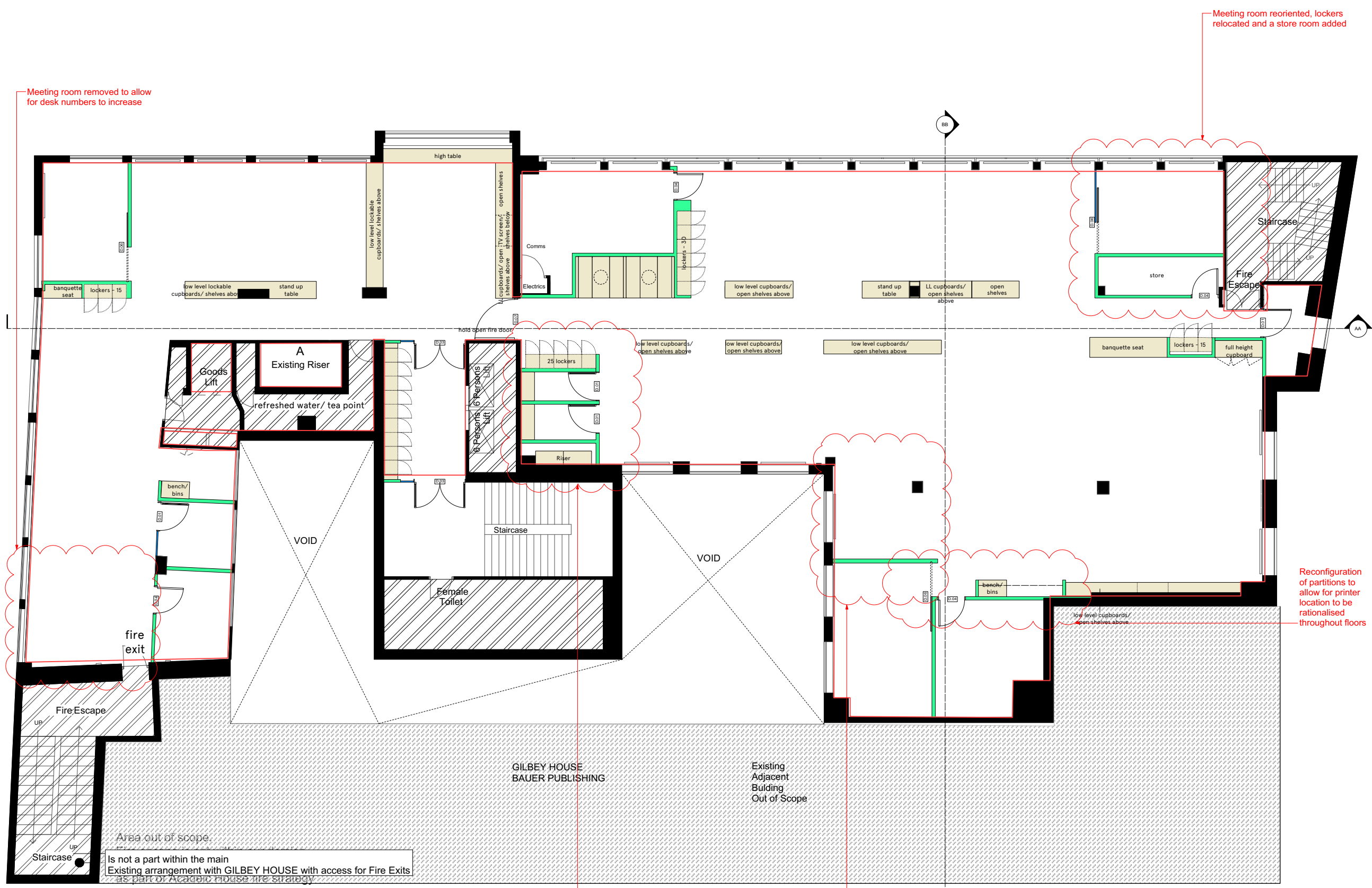


PLAN 5

NOTE
This drawing is copyright. Do not scale off dimensions. All dimensions are to be checked on site by contractor. Contractor to report any dimensional discrepancies, errors or omissions prior to commencing on site.



- Key:**
- Not in scope of works
 - Gilbey House - Adjacent Building. Out of scope area
 - Solid indicates existing structural walls to be retained
 - Hatch indicates new glazed partition wall
 - Hatch indicates new plasterboard partition wall
 - Indicates lease demise line
 - Indicates joinery item



Meeting room removed to allow for desk numbers to increase

Meeting room reoriented, lockers relocated and a store room added

Reconfiguration of partitions to allow for printer location to be rationalised throughout floors

New riser location (access panels required). Store relocated

Open review room removed to allow for desk numbers to increase

REV	DATE	DETAILS	BY
I			
H			
G			
F			
E			
D			
C	31.01.17	Removed furniture layout from plan	AB
B	25.01.17	Changes made to accommodate new riser location	AB
A	16.09.16	Planning	

CLIENT SIGNATURE
CLIENT

PROJECT
Bauer Media Group

PROJECT
Academic House Refurbishment

DRAWING TITLE
Proposed Third Floor Plan

STATUS
Planning

DATE
09.09.16

SCALE
1:50@A0

JOB NO.	TYPE	DRAWING NO.	REVISION
1608	PL	302	C

spacelab

18 Wenlock Road London N1 7TA
+44 (0)20 7033 3450 www.spacelab.co.uk

A Third Floor Plan
1:50 @ A0 / 1:100 @ A2

Area out of scope.
Is not a part within the main Existing arrangement with GILBEY HOUSE with access for Fire Exits as part of Academic House fire strategy

GILBEY HOUSE
BAUER PUBLISHING

Existing
Adjacent
Building
Out of Scope