

GENERAL NOTES:

- All materials and workmanship to be of a high standard.
- This drawing is the copyright of Innes Associates. It must not be copied or reproduced without permission.
- The design is based on survey information provided by others, dimensions to existing structures should be checked on site prior to construction.
- Do not scale this drawing. If in doubt, ask.
- This drawing must be read in conjunction with all relevant drawings and documents by architect and design team. Any discrepancy is to be reported to the Architect.
- All dimensions in millimetres unless otherwise noted.
- All structural, M&E and landscape information is indicative. Refer to consultant's drawings and specifications for proposals relevant to each discipline.

- KEY TO SPACES**
- 1 Glazed Meeting Room
 - 2 WC
 - 3 Storage
 - 4 Server Room
 - 5 Shower Room

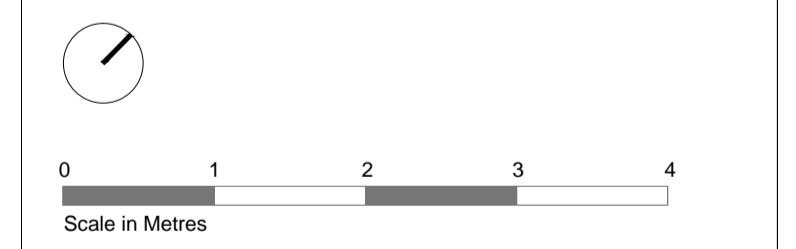
- KEY TO ARCHITECTURAL ELEMENTS**
- 6 Fixed Rooflight to L10/460B
 - 7 Fall Restraint System to N25/211
 - 8 Duct Termination to L10/430
 - 9 Glazed Floor over Void [not fire-rated] to L10/460A
 - 10 Glazed Floor over Void [fire-rated] to L10/460C
 - 11 Void with Fire Curtain to L20 617A/B
 - 12 Insulated Wall Lining to K10/133
 - 13 New Window to L10/210B [warehouse]
 - 14 New Sash Timber Window to L10/210A [3-storey]
 - 15 New Glazed Entrance Screen to L10/401
 - 16 New Glazed Door to L20/480A [terrace]
 - 17 Existing Slate Roof [refer to SoW 01 for repairs]
 - 18 Cover + Louvres to Intake Duct to L10/420A
 - 19 Raised Platform with painted MDF deck to Z10/100
 - 20 Entryphone to L20/480A
 - 21 New Rainwater Goods to R10
 - 22 Letterbox N10/225

- KEY TO SERVICES ITEMS**
- NB. These drawings show a design intent. Contractor is responsible for detailed design and specification all electrical and mechanical services, above-ground drainage, lightning protection, security and alarm systems and lift installations.
- 24 External Plant to Contractor's Design
 - 25 Platform Lift to X12/110A
 - 26 Riser for Electrical and Mechanical Services
 - 27 Continuous LED Luminaire to Contractor's Design

- FB Floor Box
 DB Distribution Board
 FAP Fire Alarm Panel
 RWP Rainwater Pipe
 RWO Rainwater Outlet
 SVP Soil Ventilation Pipe
 WCP WC Pump [Saniflo type]
 SA Security Alarm

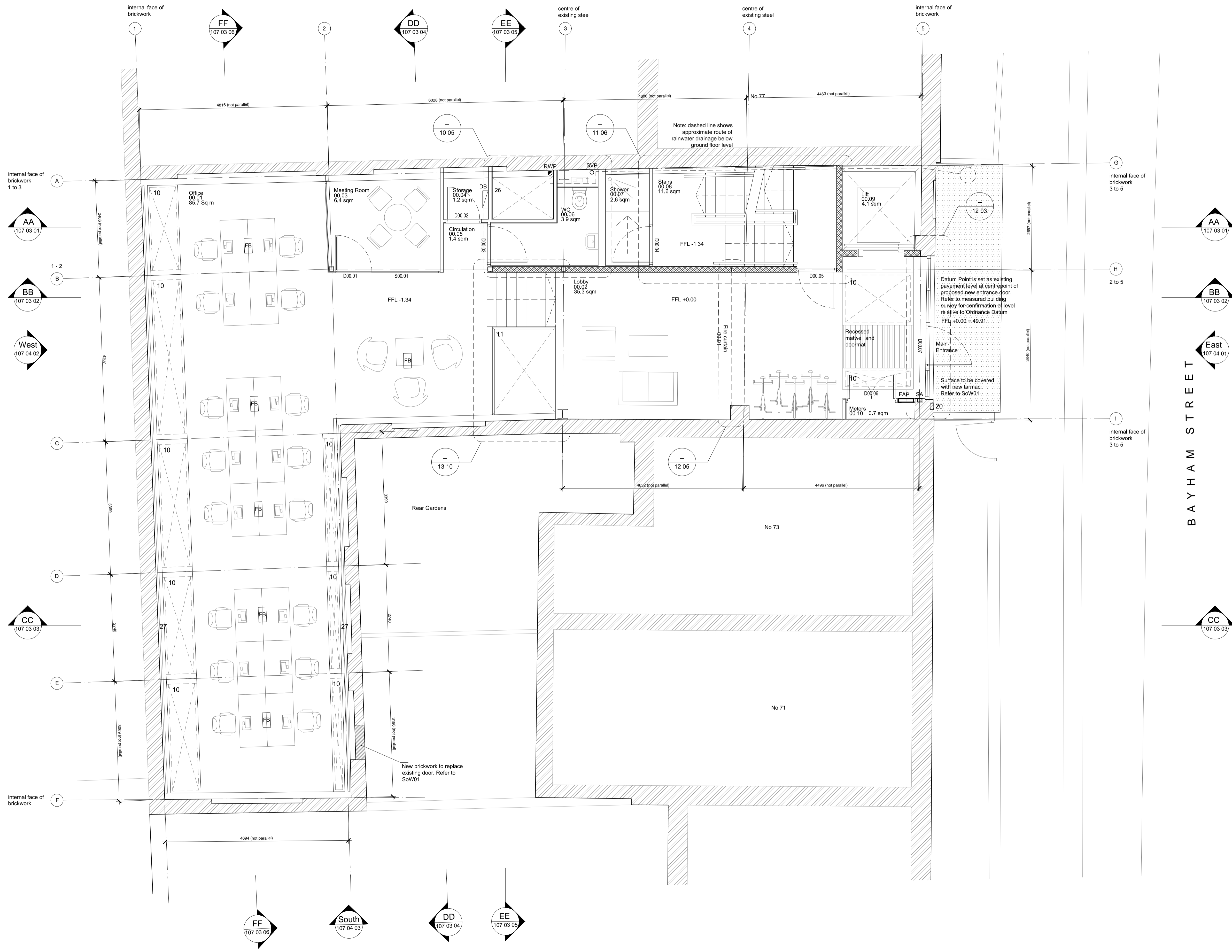
T2	Fire Alarm Panel Moved Security Alarm added	161103	MR
T1	Tender Issue	161014	MR
REV	DESCRIPTION	DATE	DRAWN

- Blockwork to structural Engineers Specification
- Existing Brick
- Concrete to structural Engineers Specification



INNES ASSOCIATES
 ARCHITECTURE & URBAN DESIGN
 6-8 COLE STREET, LONDON SE1 4YH
 T 020 7928 6734
 WWW.INNESASSOCIATES.NET

TITLE Ground Floor Plan		
PROJECT NO 107	DRAWING NO 02 00	REVISION T2
PROJECT Bayham Street		
CLIENT W12		
SCALE 1:50	SIZE A1	STAGE Stage 4
DATE NOV 2016	DRAWN BY JC	CHECKED BY MR



BAYHAM STREET