

**GENERAL NOTES :**

- All materials and workmanship to be of a high standard.
- This drawing is the copyright of Innes Associates. It must not be copied or reproduced without permission.
- The design is based on survey information provided by others, dimensions to existing structures should be checked on site prior to construction.
- Do not scale this drawing. If in doubt, ask.
- This drawing must be read in conjunction with all relevant drawings and documents by architect and design team. Any discrepancy is to be reported to the Architect.
- All dimensions in millimetres unless otherwise noted.
- All structural, M&E and landscape information is indicative. Refer to consultant's drawings and specifications for proposals relevant to each discipline.

- KEY TO SPACES**
- 1 Glazed Meeting Room
  - 2 WC
  - 3 Storage
  - 4 Server Room
  - 5 Shower Room

- KEY TO ARCHITECTURAL ELEMENTS**
- 6 Fixed Rooflight to L10/460B
  - 7 Fall Restraint System to N25/211
  - 8 Duct Termination to L10/430
  - 9 Glazed Floor over Void [not fire-rated] to L10/460A
  - 10 Glazed Floor over Void [fire-rated] to L10/460C
  - 11 Void with Fire Curtain to L20 617A/B
  - 12 Insulated Wall Lining to K10/133
  - 13 New Window to L10/210B [warehouse]
  - 14 New Sash Timber Window to L10/210A [3-storey]
  - 15 New Glazed Entrance Screen to L10/401
  - 16 New Glazed Door to L20/480A [terrace]
  - 17 Existing Slate Roof [refer to SoW 01 for repairs]
  - 18 Cover + Louvres to Intake Duct to L10/420A
  - 19 Raised Platform with painted MDF deck to Z10/100
  - 20 Entryphone to L20/480A
  - 21 New Rainwater Goods to R10
  - 22 Letterbox N10/225

**KEY TO SERVICES ITEMS**

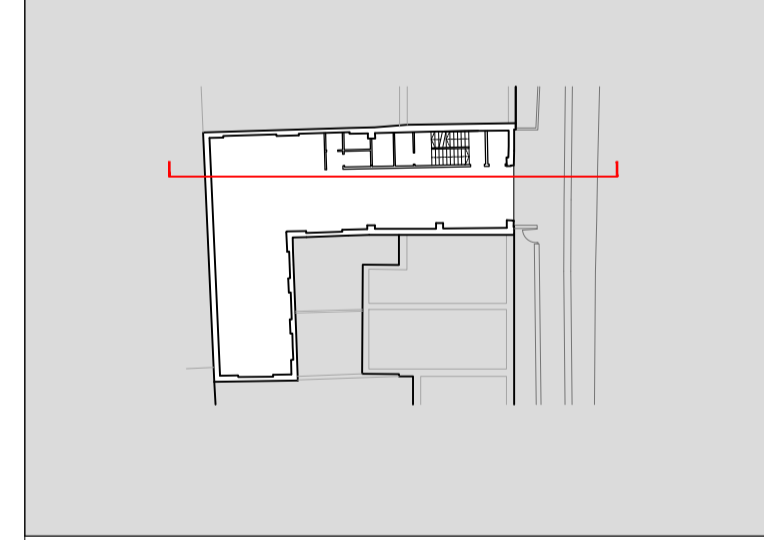
NB. These drawings show a design intent. Contractor is responsible for detailed design and specification all electrical and mechanical services, above-ground drainage, lightning protection, security and alarm systems and lift installations.

- 24 External Plant to Contractor's Design
- 25 Platform Lift to X12/110A
- 26 Riser for Electrical and Mechanical Services
- 27 Continuous LED Luminaire to Contractor's Design

- FB Floor Box
- DB Distribution Board
- FAP Fire Alarm Panel
- RWP Rainwater Pipe
- RWO Rainwater Outlet
- SVP Soil Ventilation Pipe
- WCP WC Pump [Saniflo type]
- SA Security Alarm

T1 Tender Issue 161014 MR

REV DESCRIPTION DATE DRAWN



**INNES ASSOCIATES**  
 ARCHITECTURE & URBAN DESIGN  
 6-8 COLE STREET, LONDON SE1 4YH  
 T 020 7928 6734  
 WWW.INNESASSOCIATES.NET

TITLE		
Section BB		
PROJECT NO	DRAWING NO	REVISION
107	03 02	T2
PROJECT		
Bayham Street		
CLIENT		
W12		
SCALE	SIZE	STAGE
1:50	A1	Stage 4
DATE	DRAWN BY	CHECKED BY
OCT 2016	JC	MR

Note: Pumper chamber beneath slab to structural's engineers specification