

W-L1: Liner wall type 1

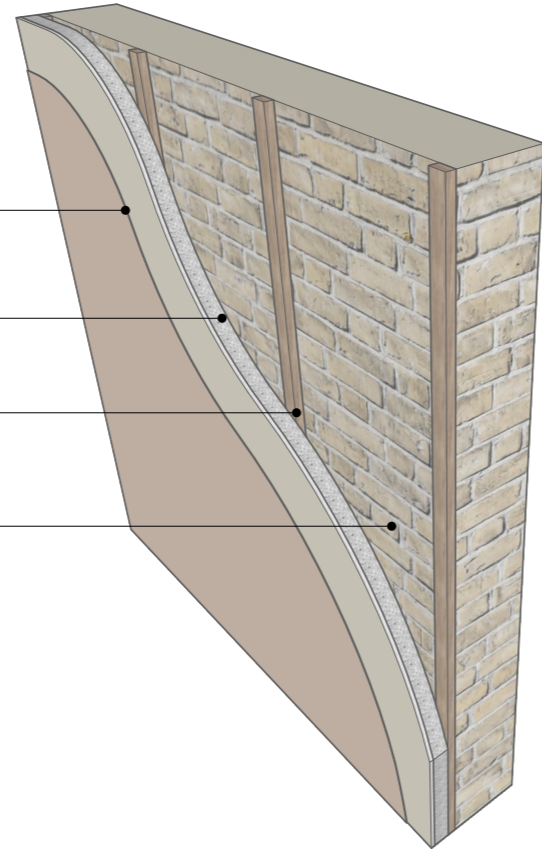
U-Value: 0.28W/m²K

3mm Lightweight Plaster Skim

60+12.5mm Celotex GD5060 plasterboard-thermal laminate, joints taped as vapour control layer

25x47 timber battens at 600 c/c

Existing/ new solid brickwall



W-M1: Mansard wall type 1

U-Value: 0.25W/m²K

Natural slate tiles to match existing

25x47 treated battens

25x47 treated counter battens

Breather membrane by Tyvek or equivalent

12mm external grade plywood wall sheathing fixed to stud at 300c/c generally and 150c/c around panel edges with 3mm dia 50mm long galvanized nails.

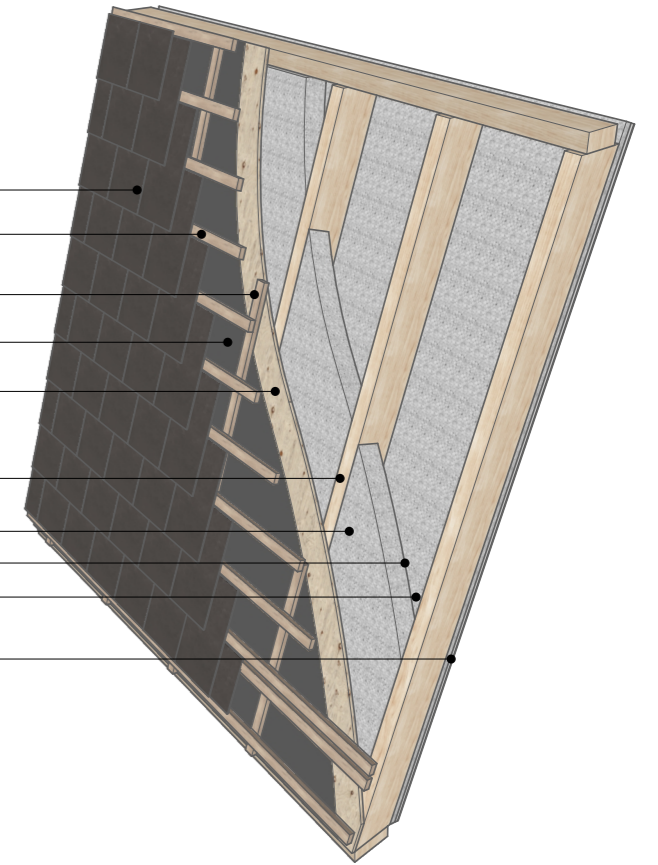
Timber stud size and spacing in accordance with structural arrangement drawings

75mm Celotex FR5000 between timber studs

50mm cavity to internal face of Celotex FR5000 between timber studs

15+12.5mm Celotex PL4015 plasterboard-thermal laminate to inside face of timber stud. Joints taped as vapour control layer.

3mm Lightweight Plaster Skim



W-E1: External wall type 1

U-Value: 0.25W/m²K

13mm Lightweight plaster finish

100mm thick Thermalite Shield blockwork with designation (iii) mortar

50mm Celotex CG5000 cavity insulation

50mm cavity

External masonry - London Stock Brick to match existing with designation (iii) mortar. External appearance to match brick bond to main property.

Wall ties in accordance with structural general notes drawing S001

