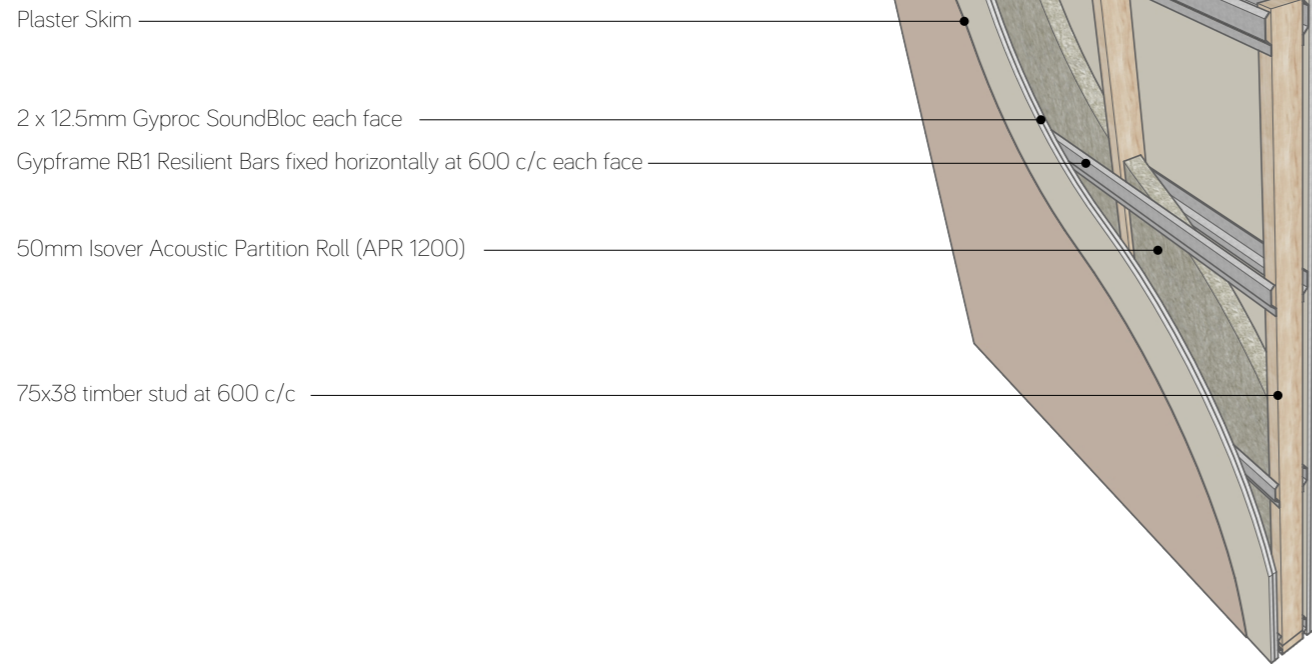


W-S1: Separating wall type 1

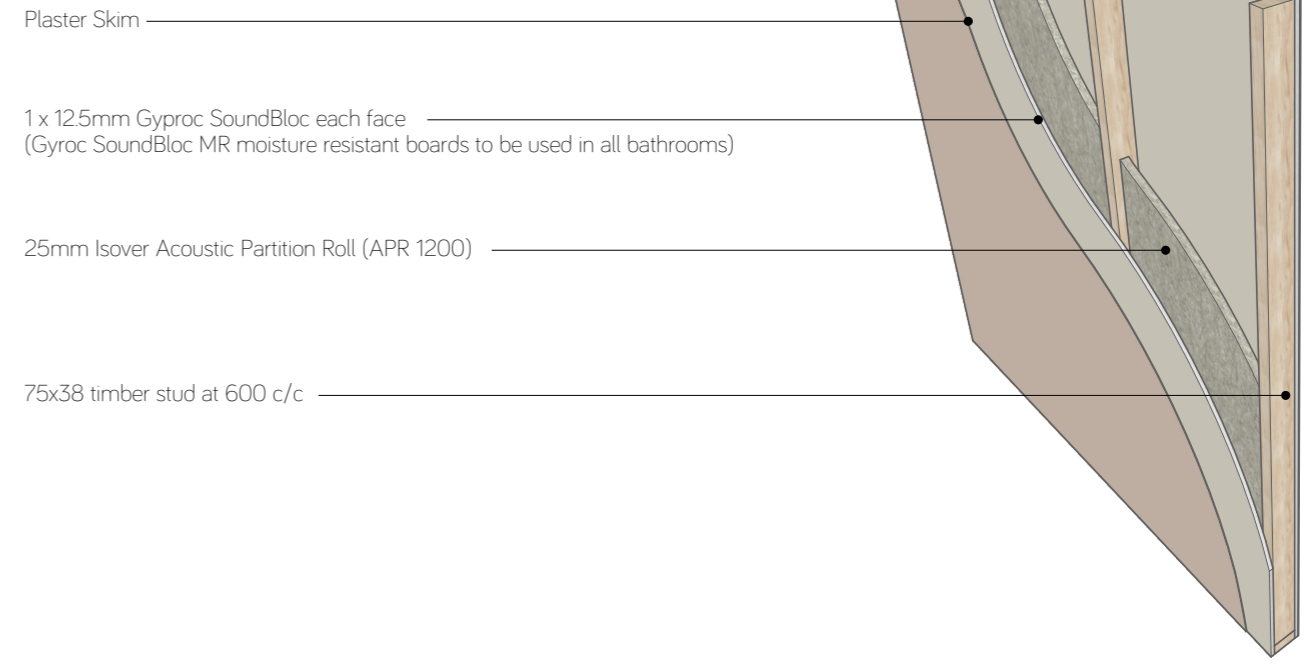
Fire Rating: 60 mins
 Sound Insulation $R_w(R_w+C_{tr})$: 59 (51)dB
 Overall thickness*: 157mm



- Plaster Skim
- 2 x 125mm Gyproc SoundBloc each face
- Gypframe RB1 Resilient Bars fixed horizontally at 600 c/c each face
- 50mm Isover Acoustic Partition Roll (APR 1200)
- 75x38 timber stud at 600 c/c

W-I1: Internal wall type 1

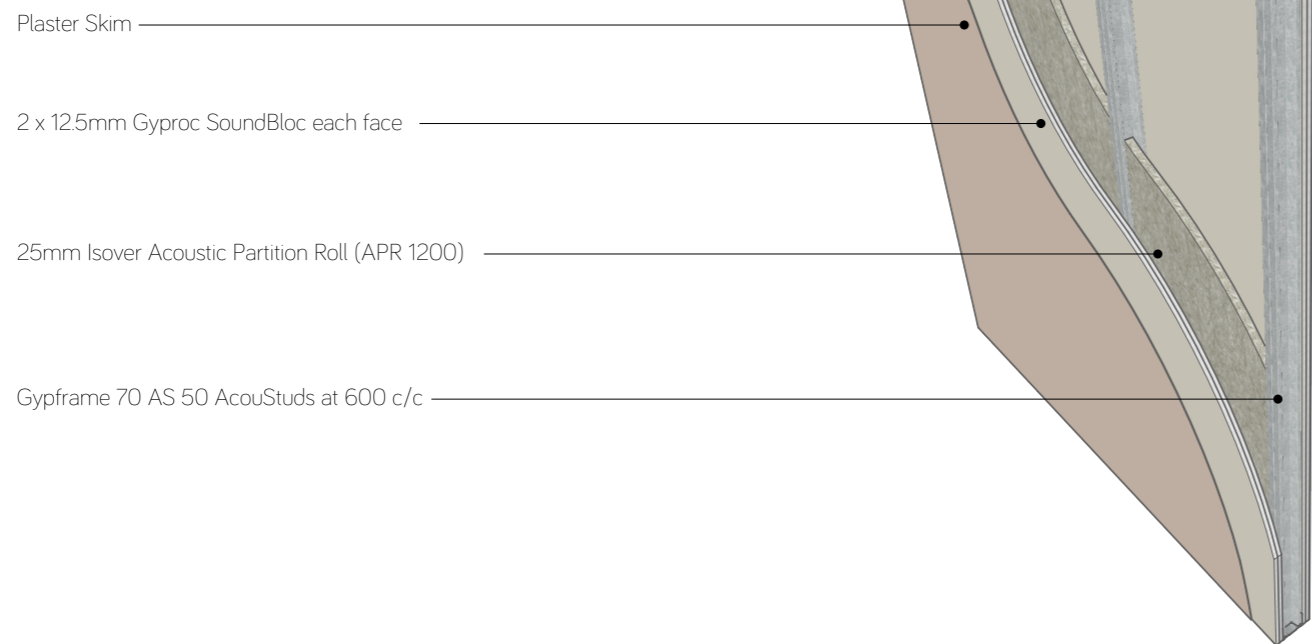
Fire Rating: 30 mins
 Sound Insulation R_w : 40dB
 Overall thickness*: 100mm



- Plaster Skim
- 1 x 125mm Gyproc SoundBloc each face
 (Gyproc SoundBloc MR moisture resistant boards to be used in all bathrooms)
- 25mm Isover Acoustic Partition Roll (APR 1200)
- 75x38 timber stud at 600 c/c

W-S2: Separating wall type 2

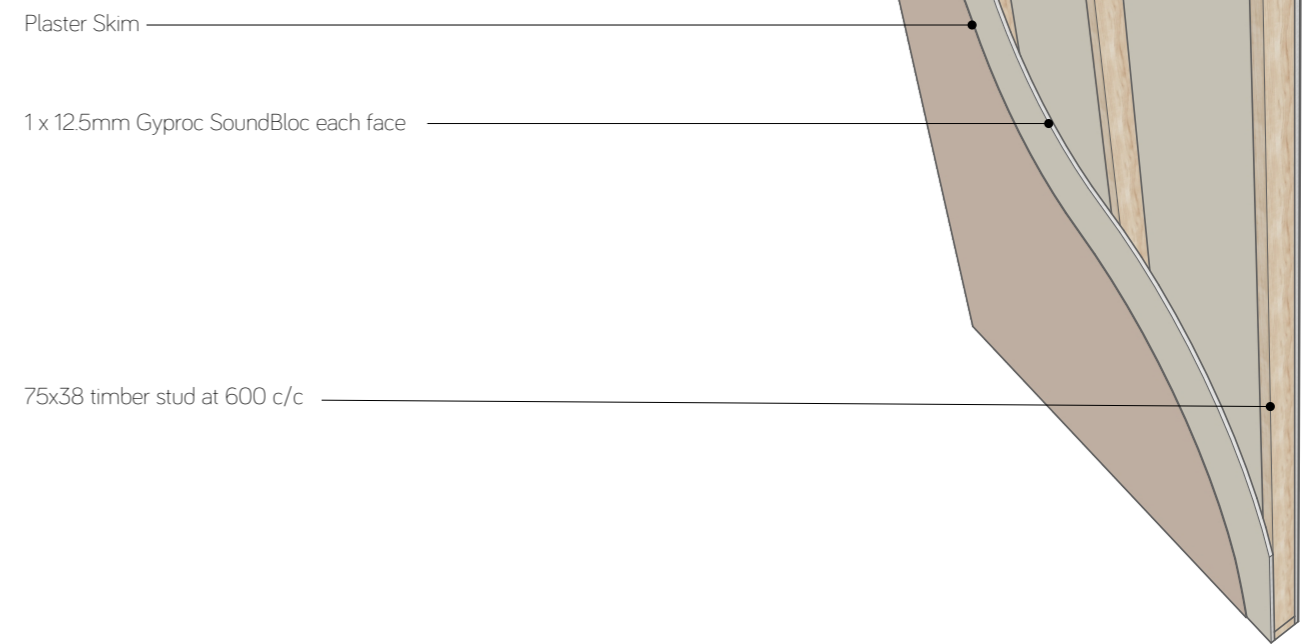
Fire Rating: 60 mins
 Sound Insulation R_w : 59 dB
 Overall thickness*: 122mm



- Plaster Skim
- 2 x 125mm Gyproc SoundBloc each face
- 25mm Isover Acoustic Partition Roll (APR 1200)
- Gypframe 70 AS 50 AcouStuds at 600 c/c

W-I2: Internal wall type 2

Fire Rating: 30 mins
 Sound Insulation R_w : n.a.
 Overall thickness*: 100mm



- Plaster Skim
- 1 x 125mm Gyproc SoundBloc each face
- 75x38 timber stud at 600 c/c