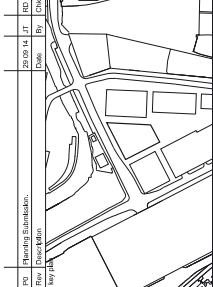
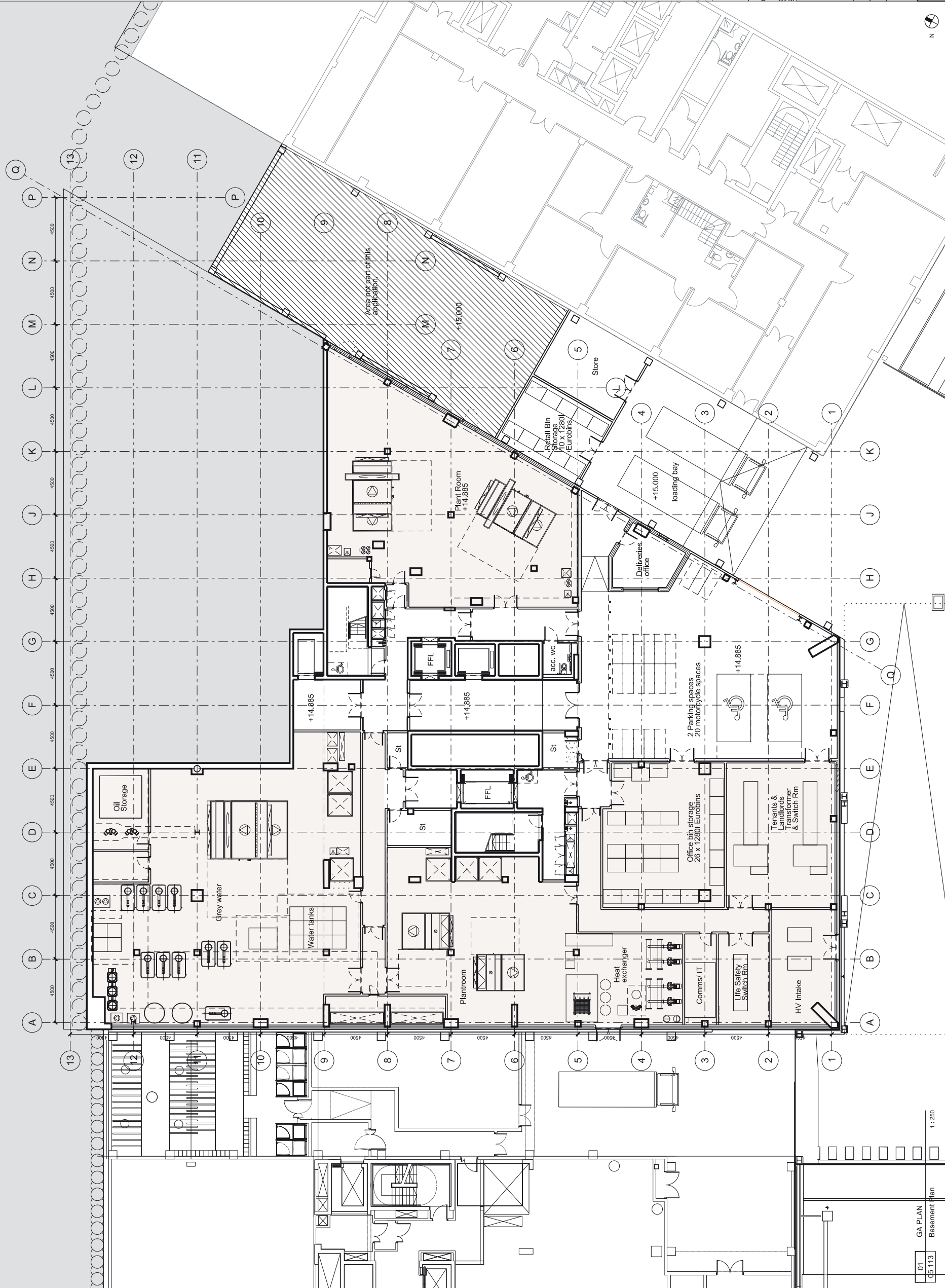


THIS DRAWING IS COPYRIGHT
No drawing shall be reproduced in any form without prior
written permission of Eric Parry Architects.



28-42 Bamber Street London EC7A 8DEP Tel: 020 7498 9500 Fax: 020 7498 9004 www.ericparryarchitects.co.uk	
Eric Parry Architects	Client: King's Cross Central General Partnership
Project: Building B5	Scale: 1:250
Drawn by: Existing - GA	Sheet: Lower Basement Plan
Checked by: EPA KXC 05 113	Date: P0