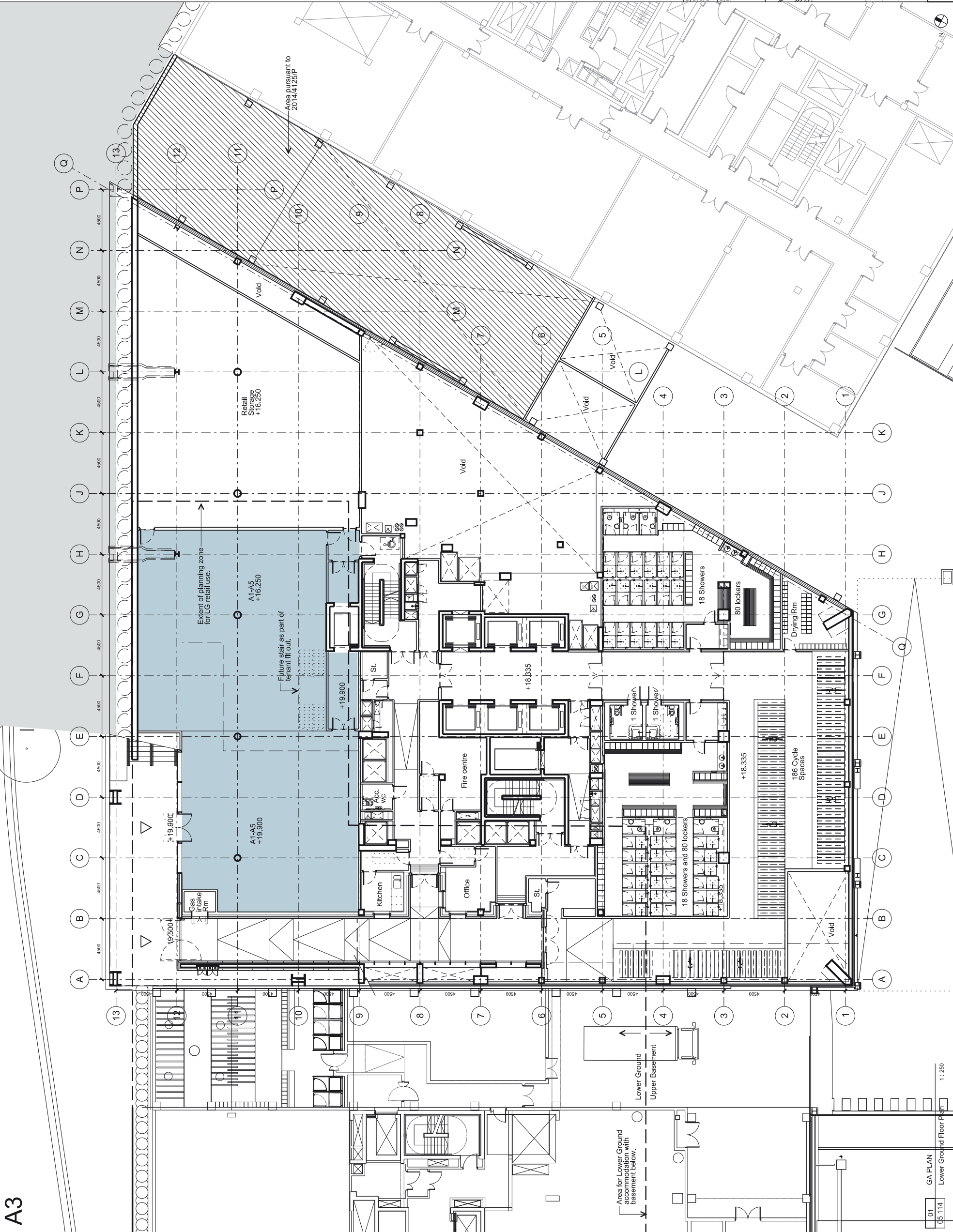


THIS DRAWING IS COPYRIGHT.
No drawing shall be reproduced in any form without prior
written permission of Eric Parry Architects.



1	Approved	23.08.14	JT	102
2	Approved	23.08.14	JT	102
3	Approved	23.08.14	JT	102
4	Approved	23.08.14	JT	102
5	Approved	23.08.14	JT	102
6	Approved	23.08.14	JT	102
7	Approved	23.08.14	JT	102
8	Approved	23.08.14	JT	102
9	Approved	23.08.14	JT	102
10	Approved	23.08.14	JT	102
11	Approved	23.08.14	JT	102
12	Approved	23.08.14	JT	102
13	Approved	23.08.14	JT	102

28-42 Banner Street
London EC3N 7DF
Tel: 020 7608 9601
www.ericparryarchitects.co.uk

Eric Parry Architects
King's Cross Central General Partnership

product: Building B5
drawing title: Existing GA Upper Basement & Lower Ground Floor Plan @ A3

scale: 1:250
drawing no: EPA KXC05 114
sheet no: P4