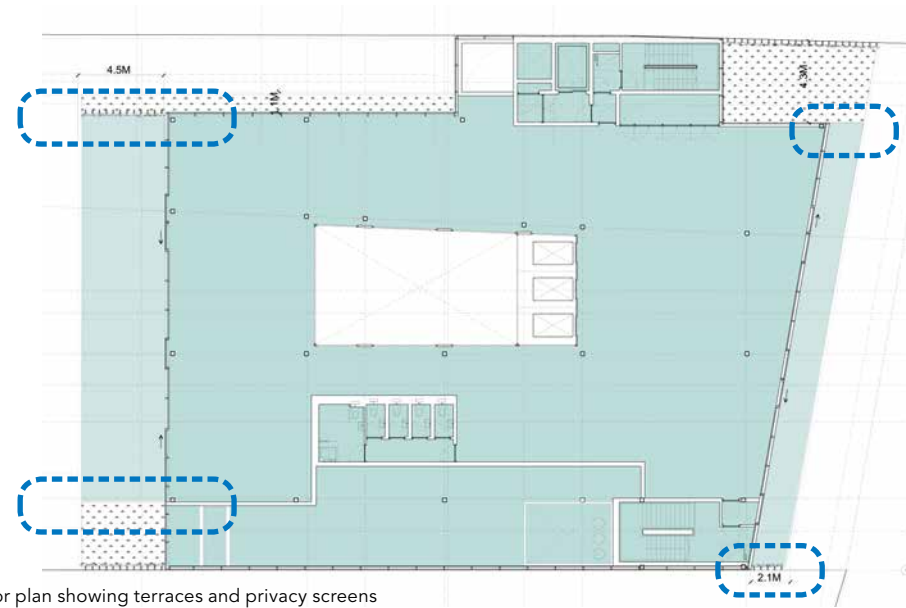




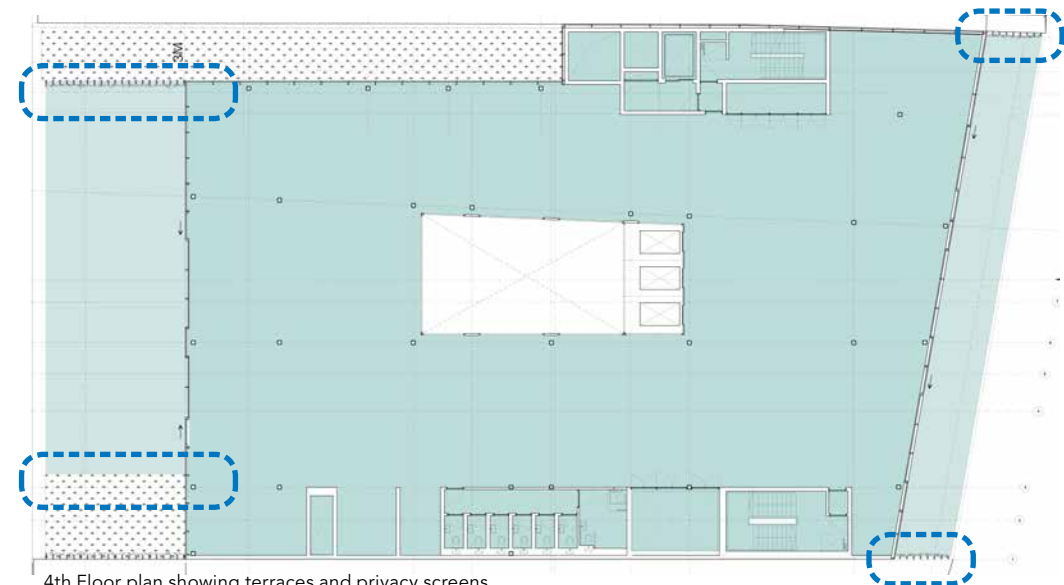
## Jamestown Road: Planning Conditions 5, 6, 11





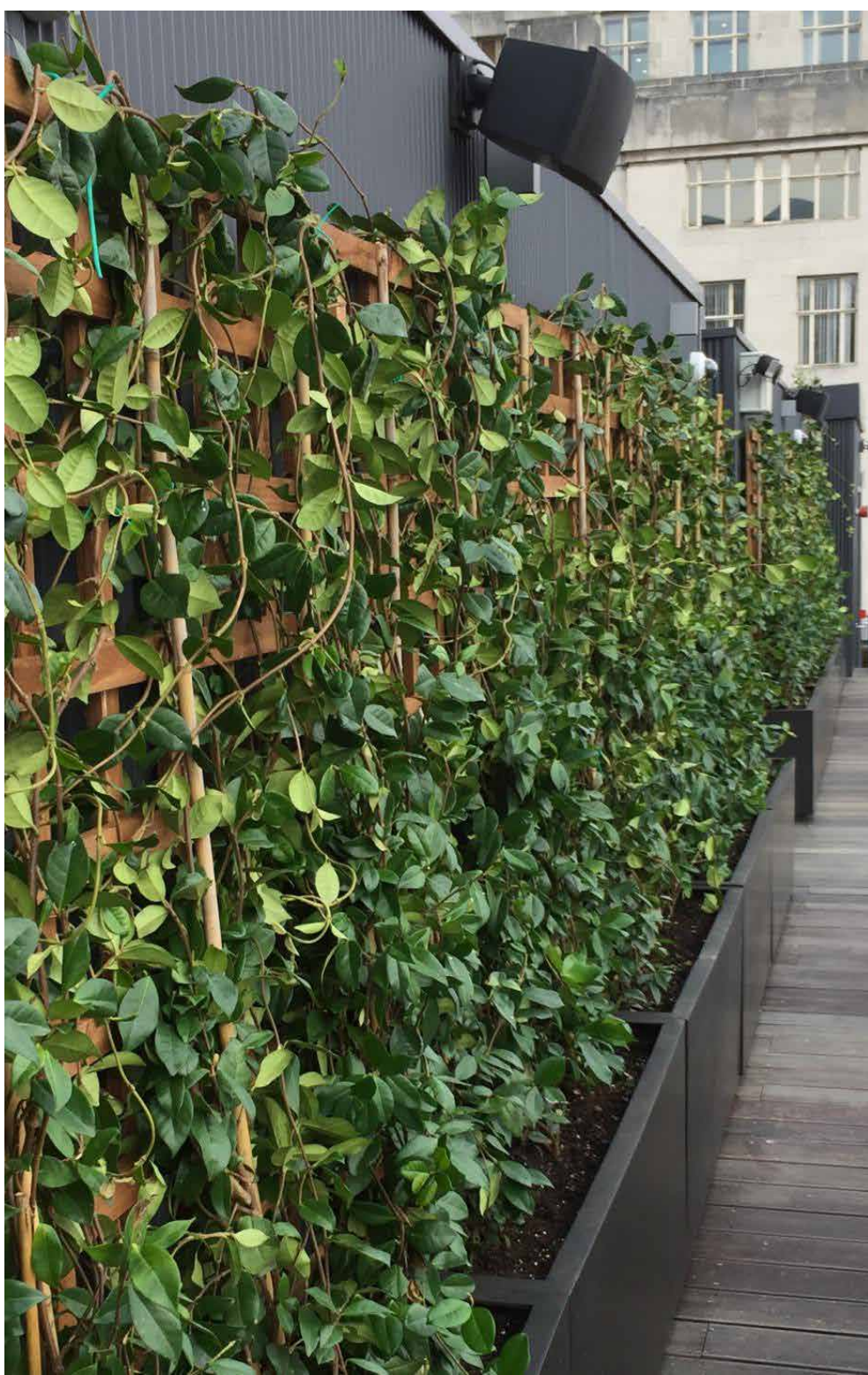


5th Floor plan showing terraces and privacy screens



4th Floor plan showing terraces and privacy screens

- = Office
- = Terrace
- = Location of screen



Trachelopermum jasminoides

### Planning Condition 5: Details of Privacy Screens to terraces

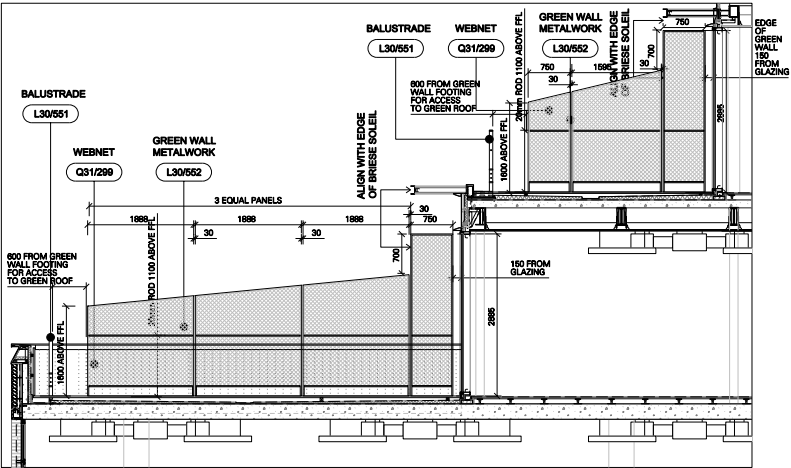
There are accessible terraces at 4<sup>th</sup> and 5<sup>th</sup> floor. To prevent overlooking of neighbouring properties each terrace ends with a fixed privacy screen.

The screens are to be planted with Trachelopermum jasminoides to a height of at least 2.3m or to the top of the web netting where it is less than 2.3m



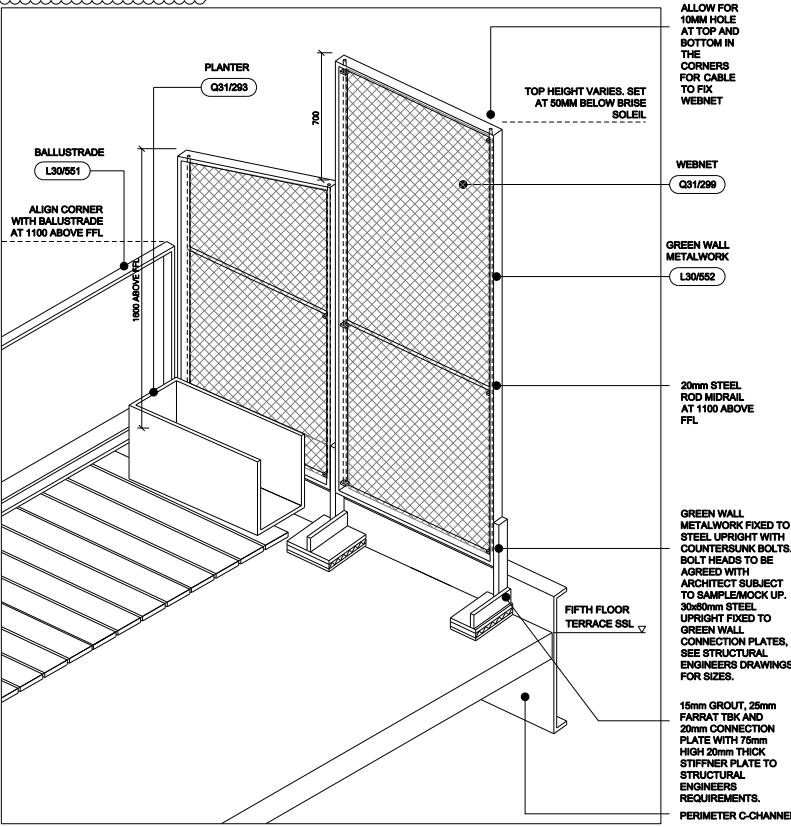
# Planning Condition 5: Details of Privacy Screens to terraces - continued

The planters are of coated steel and web net to match the aesthetic of the building. They are designed so that they taper towards the edge of the building to avoid increasing its visual mass. The lowest point is 1600mm above finished floor level, which corresponds to an average UK adult eye height.

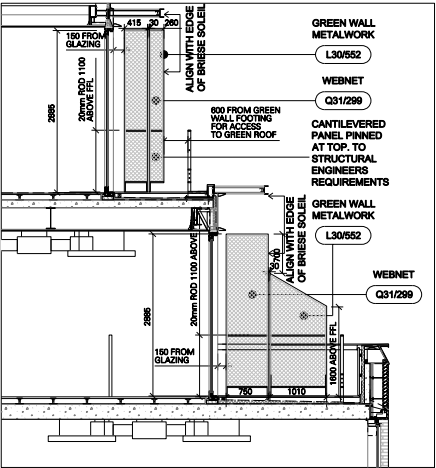


01. GREEN WALL METAL WORK ELEVATIONS- NORTH FACADE 1:50 @ A1

TOTAL NO. OF GREEN WALLS X 2

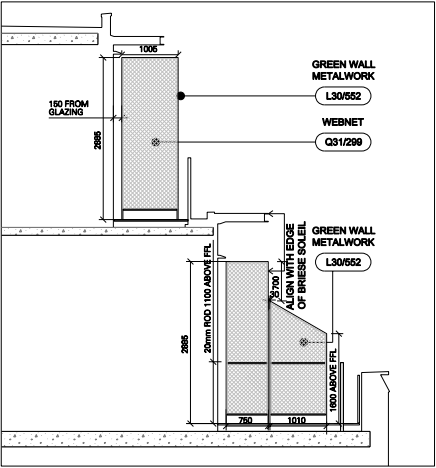


03. 5TH FLOOR GREEN WALL ISOMETRIC SHOWING TYPICAL FOOTING DETAIL (NOT TO SCALE)



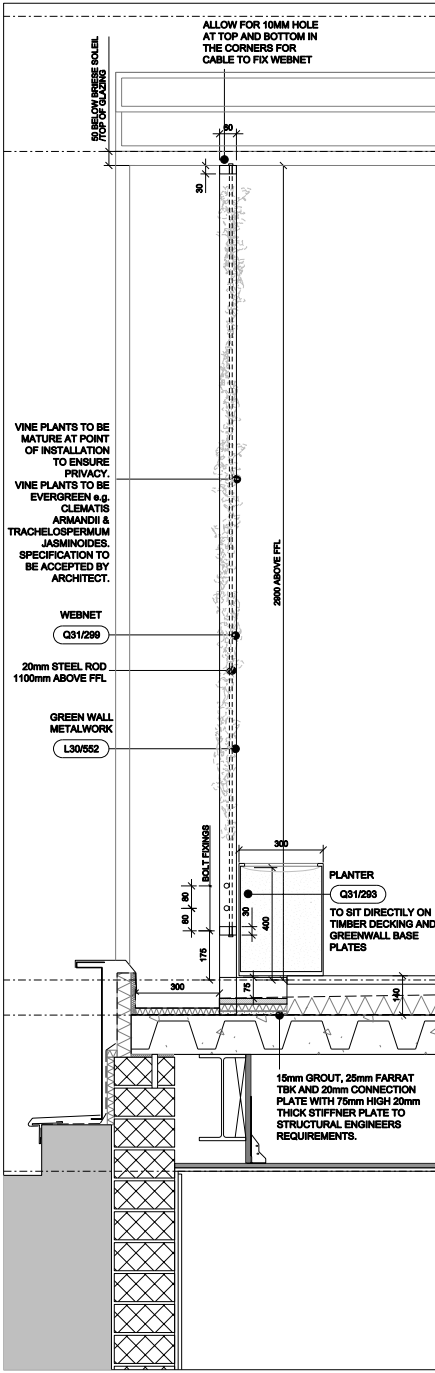
02. GREEN WALL METAL WORK ELEVATIONS- SOUTH WEST FACADE 1:50 @ A1

TOTAL NO. OF GREEN WALLS X 1

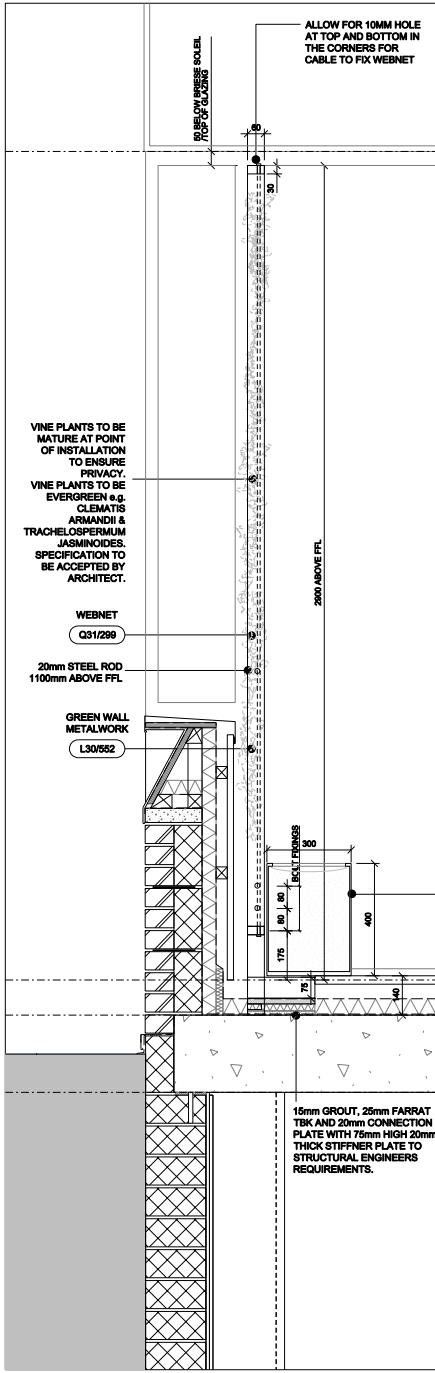


06. GREEN WALL METAL WORK ELEVATIONS- SOUTH EAST FACADE 1:50 @ A1

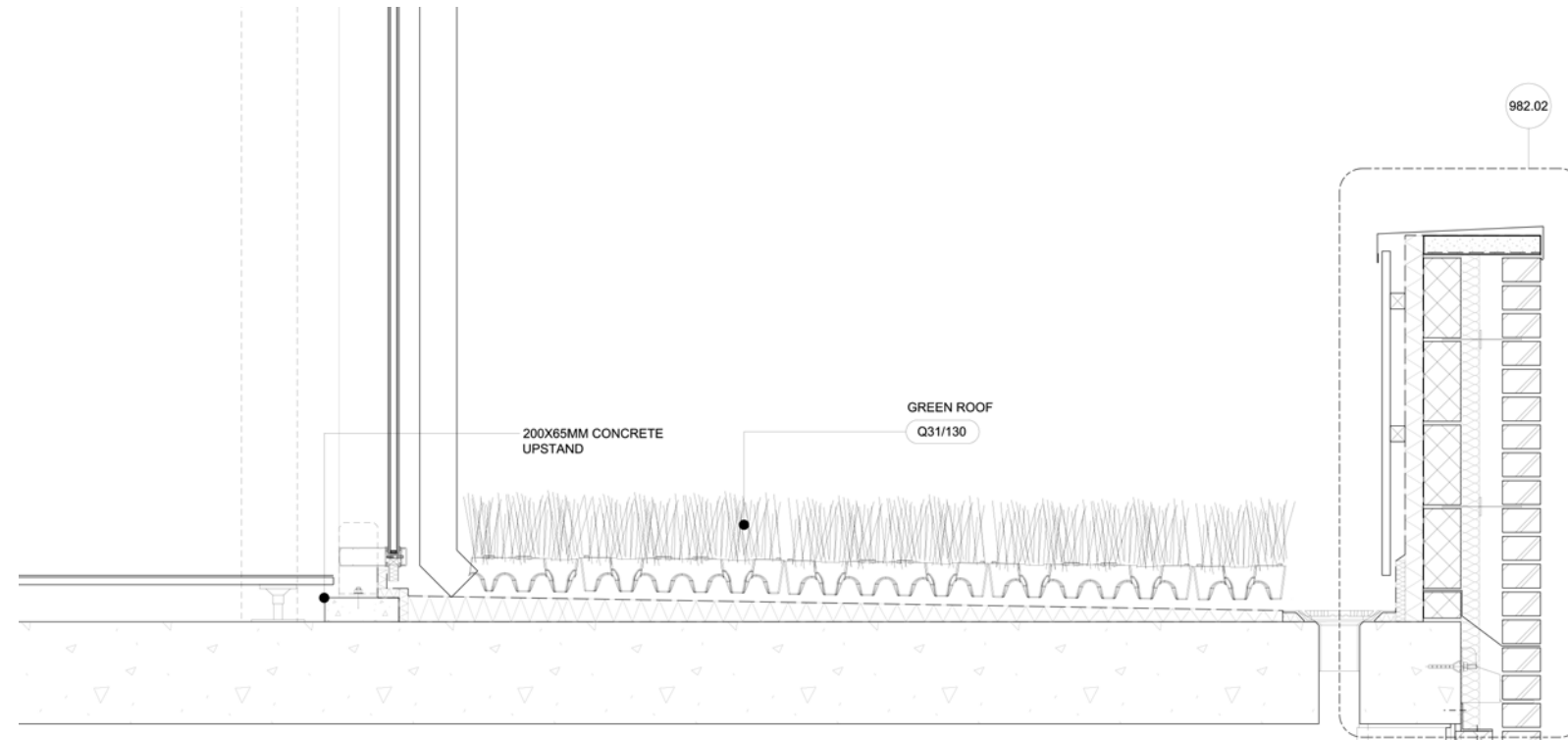
TOTAL NO. OF GREEN WALLS X 1



04. TYPICAL 5TH FLOOR SECTION 1:10 @ A1



05. TYPICAL 4TH FLOOR SECTION 1:10 @ A1



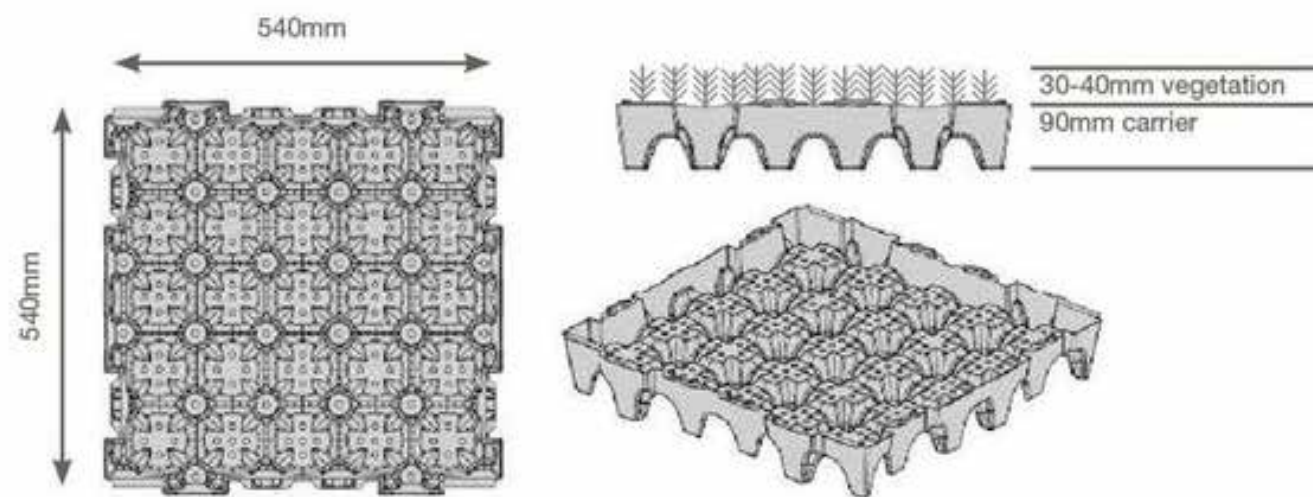
1:20 Section through an indicative area of green roof

## Planning Condition 6: Details of green roof

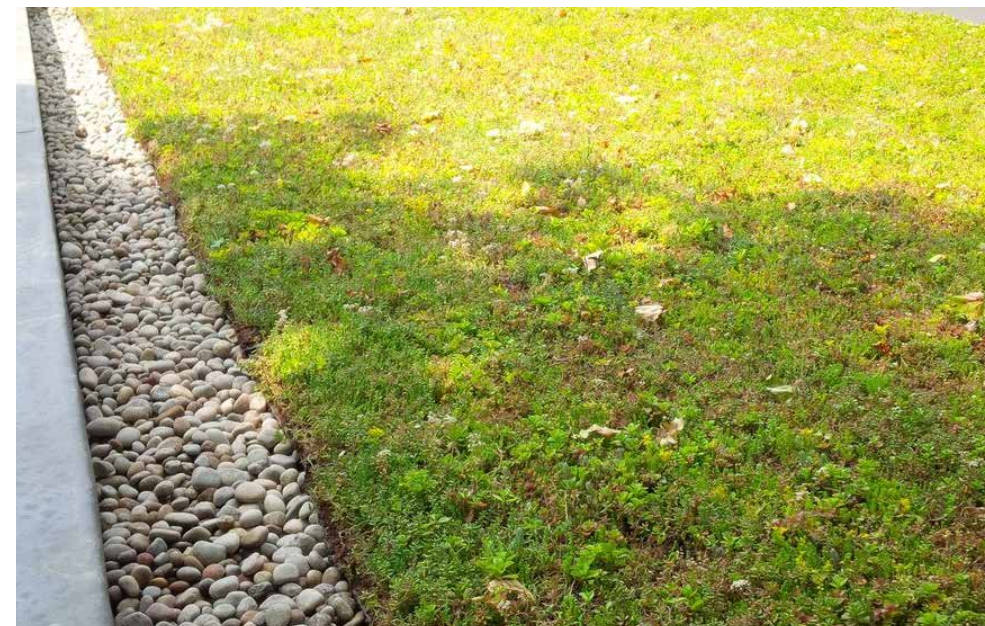
The green roofs of the building are to receive Sedum. Roof made up of GrufeTiles planted with pre-grown Sedum, 8-12 differing varieties.

Sedum is evergreen, requires no additional watering beyond rain and requires very little maintenance.

The GrufeTiles system is made from recycled plastic and includes a drainage layer and reservoir function to delay discharge of rain water into the drainage system.

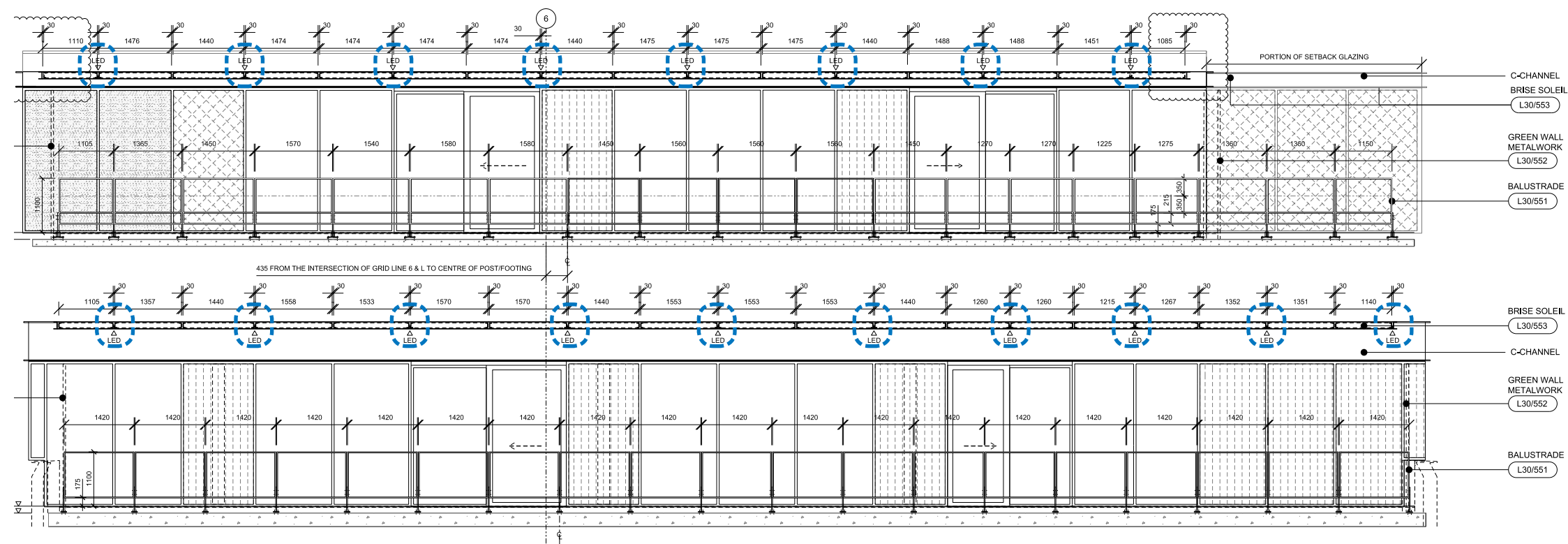


Details of specified green roof system

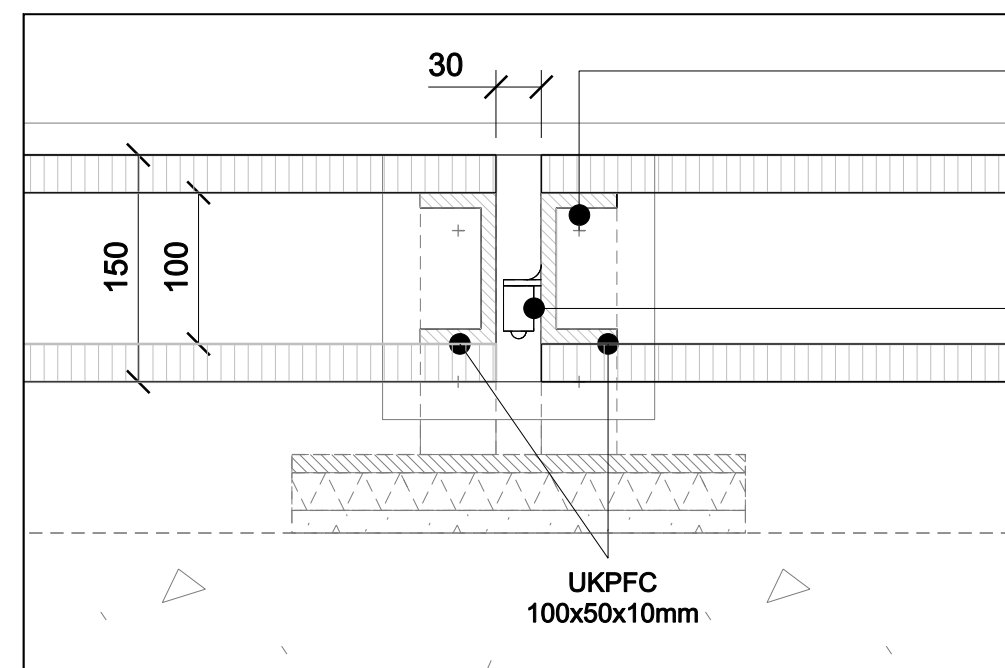


System in use at Kings College London (photo by Ans group Global)





Elevations of terraces showing LED positions



Details of LED between C channels

FOR ALL BOLTS AND CONNECTION TO PRIMARY STRUCTURE REFER TO STRUCTURAL ENGINEERS REQUIREMENTS.

LED LIGHT

UKPFC  
100x50x10mm

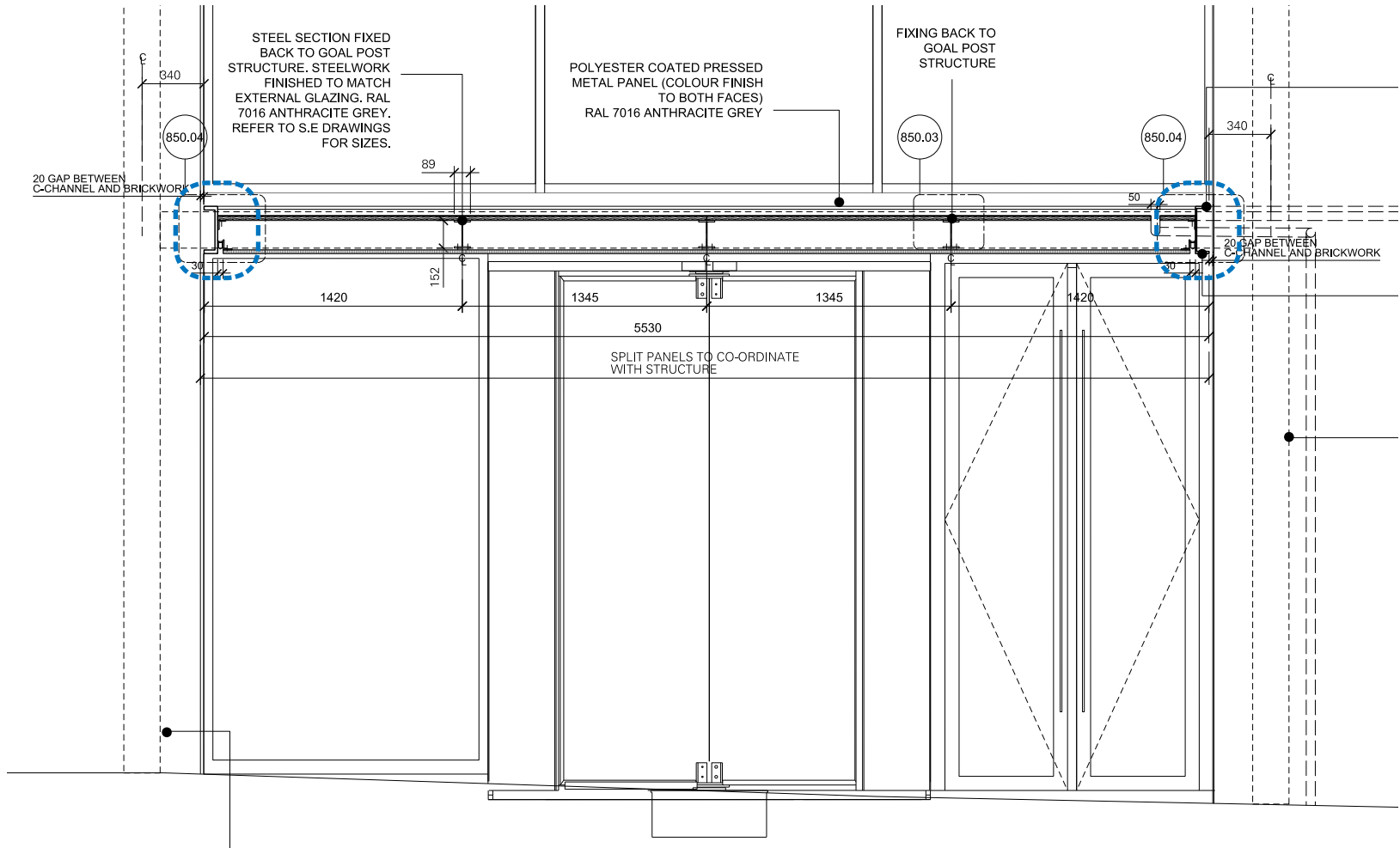
## Planning Condition 11: Details of external lighting

There is limited external lighting in the scheme, limited to the architectural metalwork on the Jamestown Road facade.

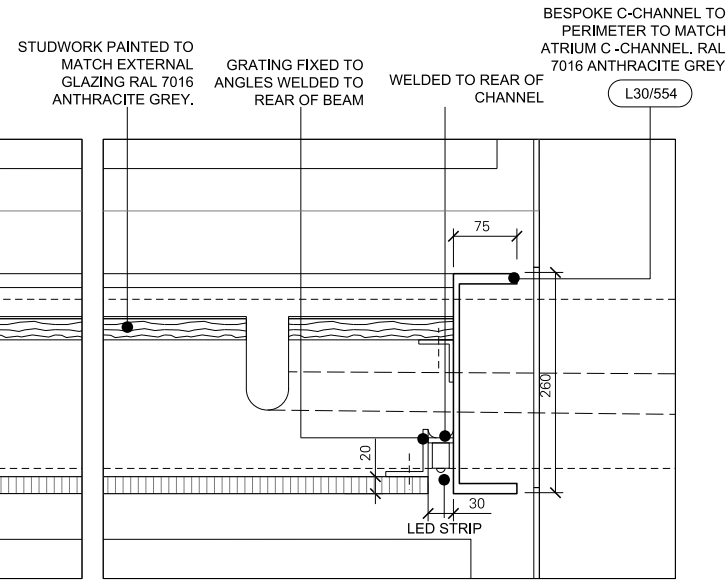
There are lights in the entrance canopy and at brise soleil at 4<sup>th</sup> and 5<sup>th</sup>.

The fixtures are the Deltalight Femtoline 25, a slim LED fitting that fits between C channels in the metalwork to illuminate beneath them.





Elevation of entrance canopy showing LED positions



Details of LED at entrance canopy