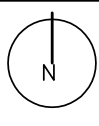
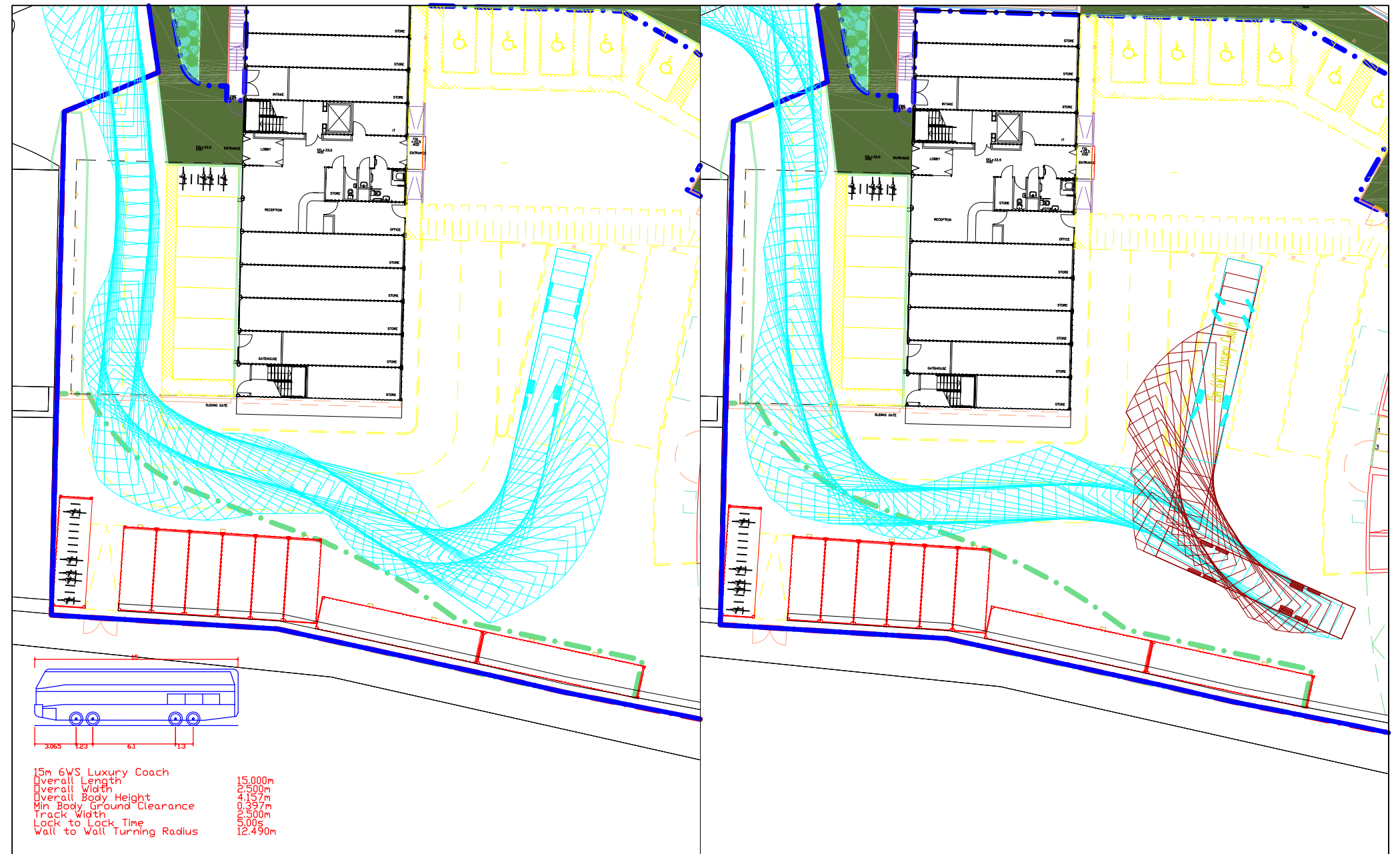


Date: August 2016
Scale: 1:250@A3
Source: AAM / PMA
Drawing No. PI560/SPA

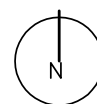


PI560: Roundhouse, Chalk Farm Road, NW1 8EH
Figure 2b.
Swept Path Analysis: Pantechtron

PAUL MEW ASSOCIATES
TRAFFIC CONSULTANTS
Pfm House, 21 Enterprise Way, London SW18 1FZ
Tel: 0208 780 0426
E-mail: paulmew@pma-traffic.co.uk Website: www.pma-traffic.co.uk

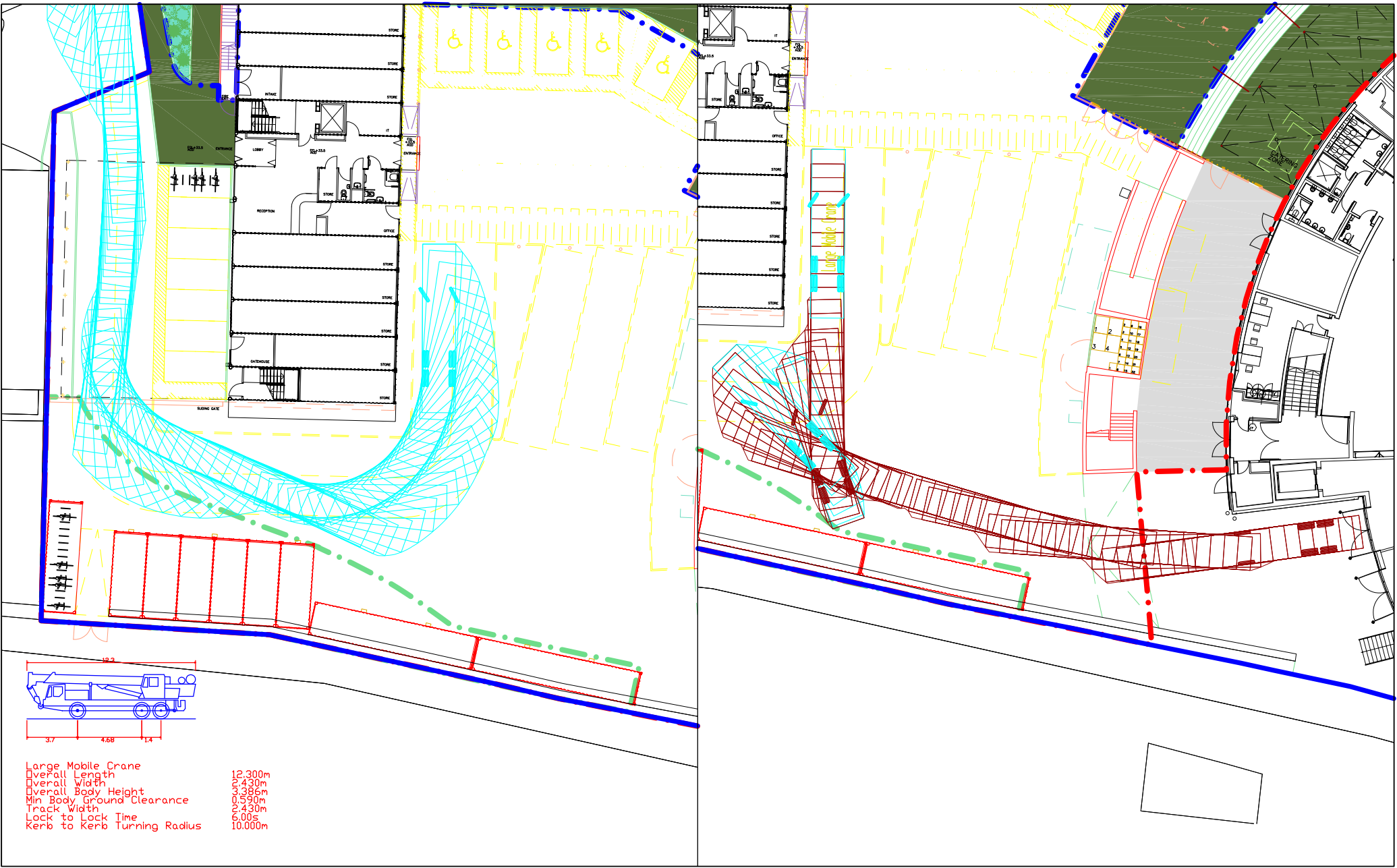


Date: August 2016
 Scale: 1:250@A3
 Source: AAM / PMA
 Drawing No. PI560/SPA



PI560: Roundhouse, Chalk Farm Road, NW1 8EH
 Figure 3.
 Swept Path Analysis: Large Coach

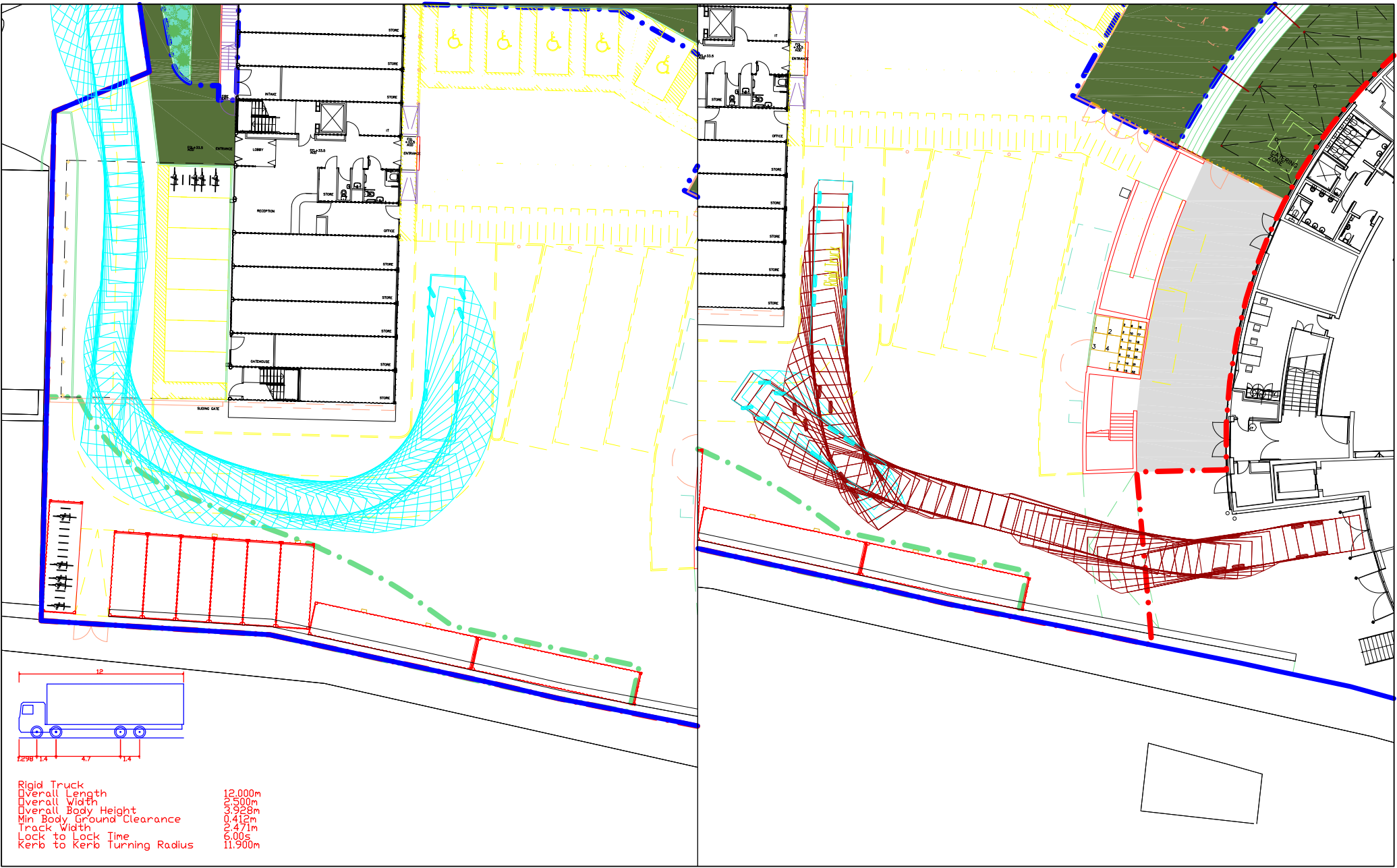
PAUL MEW ASSOCIATES
 TRAFFIC CONSULTANTS
 Plm House, 21 Enterprise Way, London SW18 1FZ
 Tel: 0208 780 0426
 E-mail: paulmew@pma-traffic.co.uk Websites: www.pma-traffic.co.uk



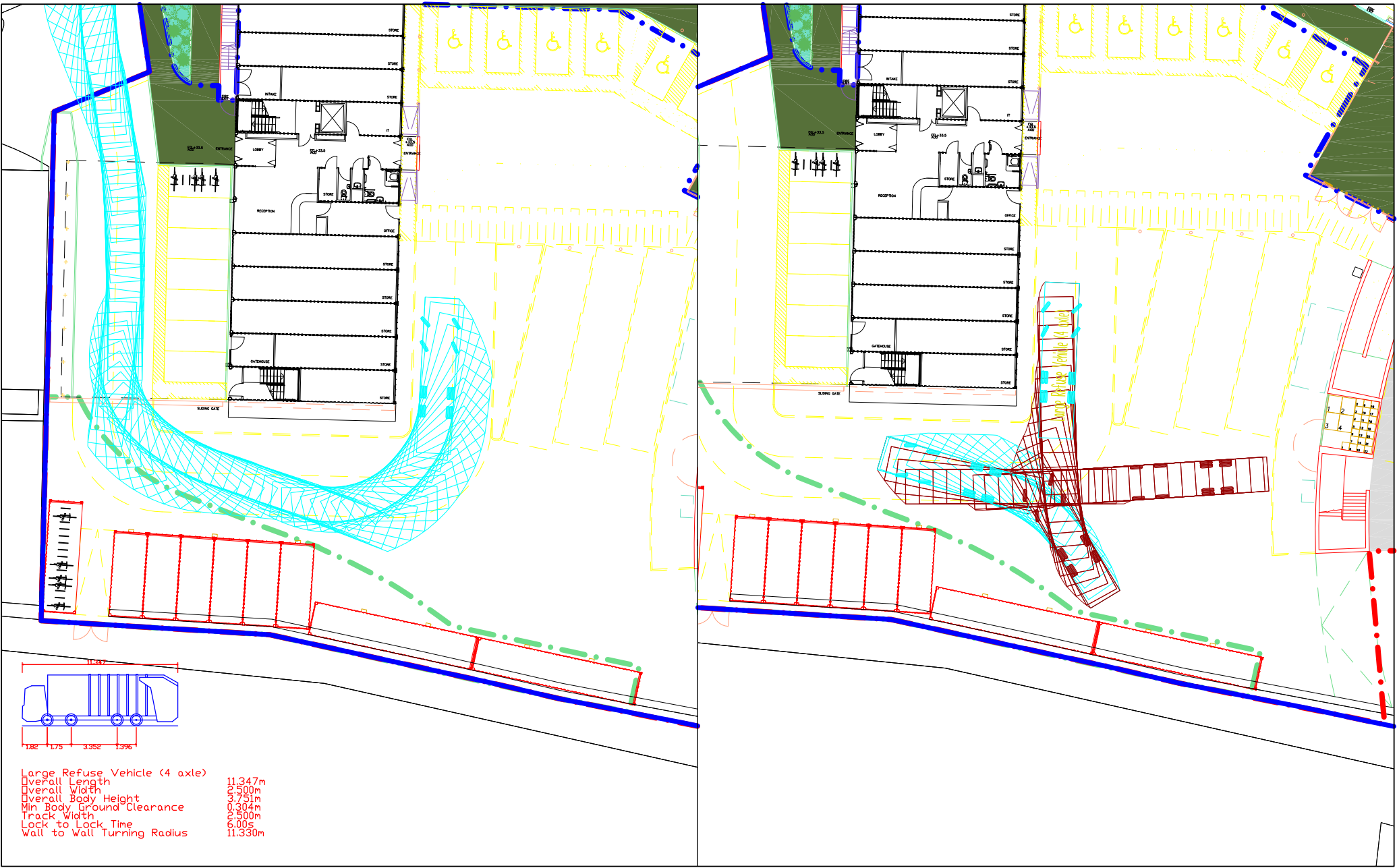
Date: August 2016
Scale: 1:250@A3
Source: AAM / PMA
Drawing No. PI560/SPA

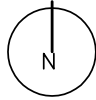

PI560: Roundhouse, Chalk Farm Road, NW1 8EH
Figure 4a.
Swept Path Analysis: Mobile Crane

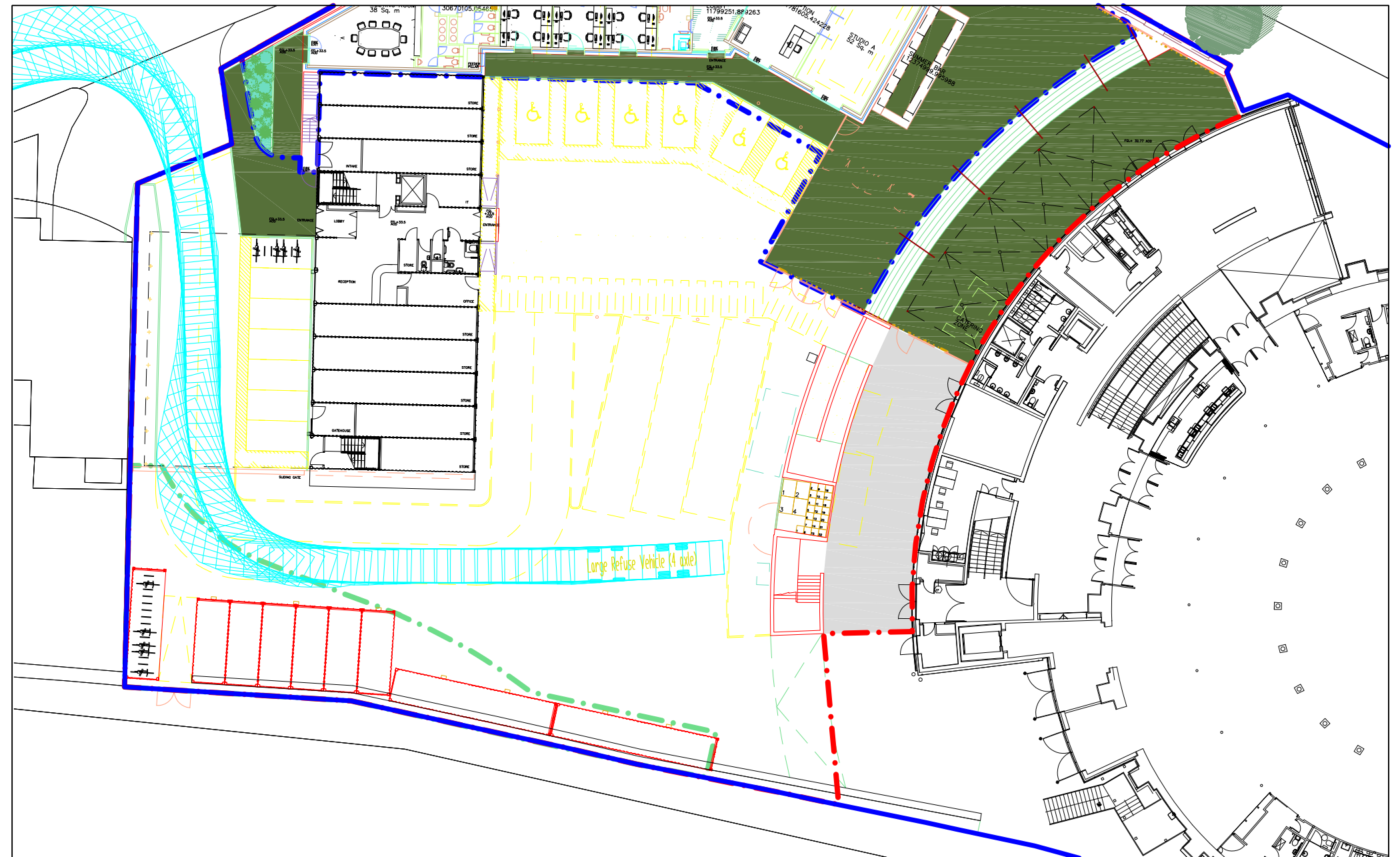
PAUL MEW ASSOCIATES
TRAFFIC CONSULTANTS
Pym House, 21 Enterprise Way, London SW18 1FZ
Tel 0208 780 0426
Email paul.mew@pma-traffic.co.uk Website www.pma-traffic.co.uk



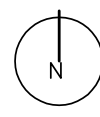
<p>Date: August 2016 Scale: 1:250@A3 Source: AAM / PMA Drawing No. PI560/SPA</p>		<p>PI560: Roundhouse, Chalk Farm Road, NW1 8EH Figure 5a. Swept Path Analysis: 40ft Truck</p>	<p>PAUL MEW ASSOCIATES TRAFFIC CONSULTANTS Pym House, 21 Enterprise Way, London SW18 1FZ Tel 0208 780 0426 Email paulmew@pma-traffic.co.uk Website www.pma-traffic.co.uk</p>
--	--	---	--



<p>Date: August 2016 Scale: 1:250@A3 Source: AAM / PMA Drawing No. PI560/SPA</p>		<p>PI560: Roundhouse, Chalk Farm Road, NW1 8EH Figure 6a. Swept Path Analysis: Large Refuse Vehicle</p>	<p> PAUL MEW ASSOCIATES TRAFFIC CONSULTANTS Pym House, 21 Enterprise Way, London SW18 1FZ Tel 0208 780 0426 Email paul.mew@pma-traffic.co.uk Websites www.pma-traffic.co.uk</p>
--	---	---	--



Date: August 2016
 Scale: 1:250@A3
 Source: AAM / PMA
 Drawing No. PI560/SPA

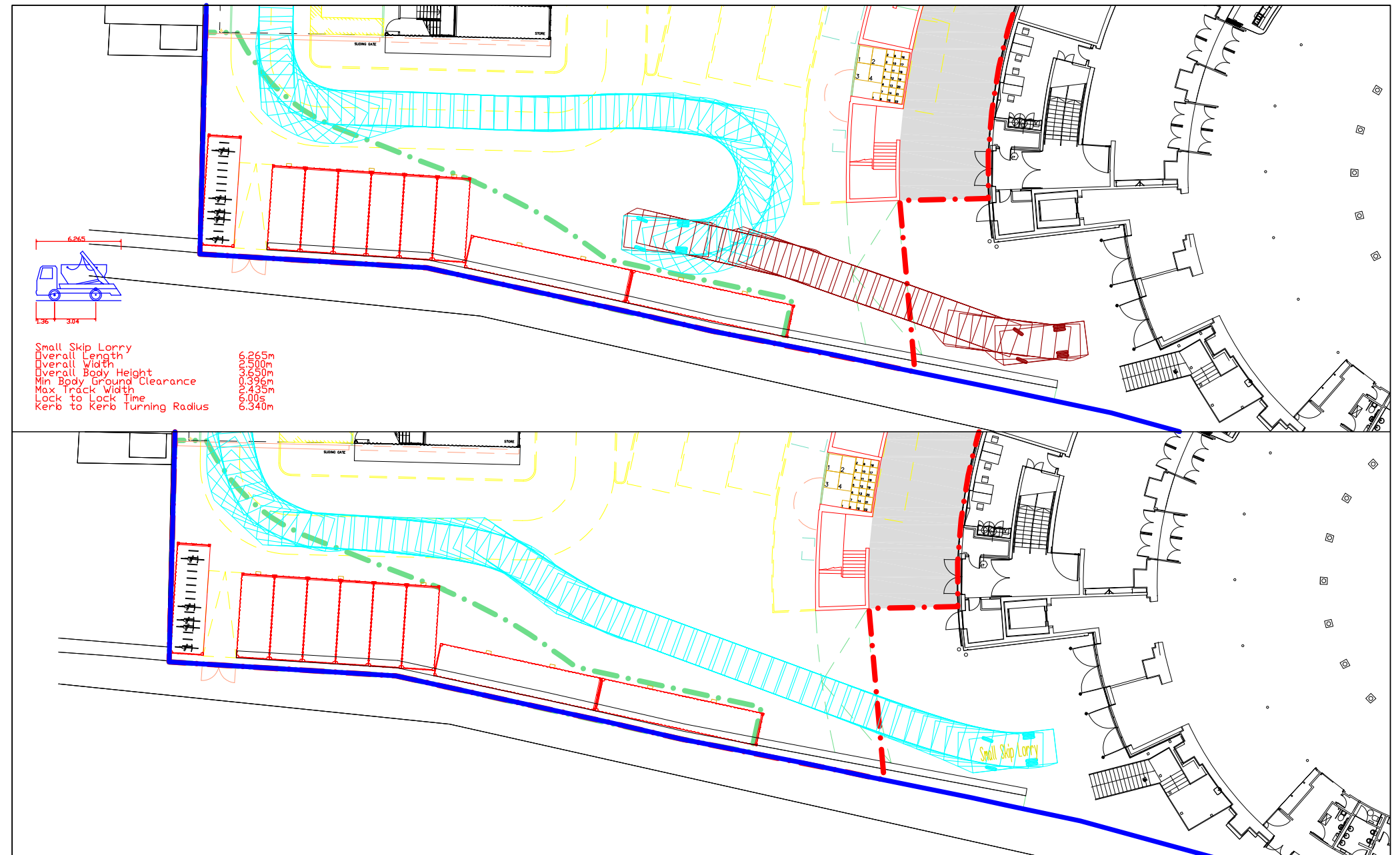


PI560: Roundhouse, Chalk Farm Road, NW1 8EH
 Figure 6b.
 Swept Path Analysis: Large Refuse Vehicle

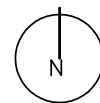
PAUL MEW ASSOCIATES
 TRAFFIC CONSULTANTS
 Plm House, 21 Enterprise Way, London SW18 1FZ
 Tel: 0208 780 0426
 E-mail: paulmew@pma-traffic.co.uk Website: www.pma-traffic.co.uk



<p>Date: August 2016 Scale: 1:250@A3 Source: AAM / PMA Drawing No. PI560/SPA</p>		<p>PI560: Roundhouse, Chalk Farm Road, NW1 8EH Figure 7. Swept Path Analysis: Fire Engine</p>	<p> PAUL MEW ASSOCIATES TRAFFIC CONSULTANTS Plm House, 21 Enterprise Way, London SW18 1FZ Tel: 0208 780 0426 E-mail: paulmew@pma-traffic.co.uk Website: www.pma-traffic.co.uk</p>
--	--	---	---

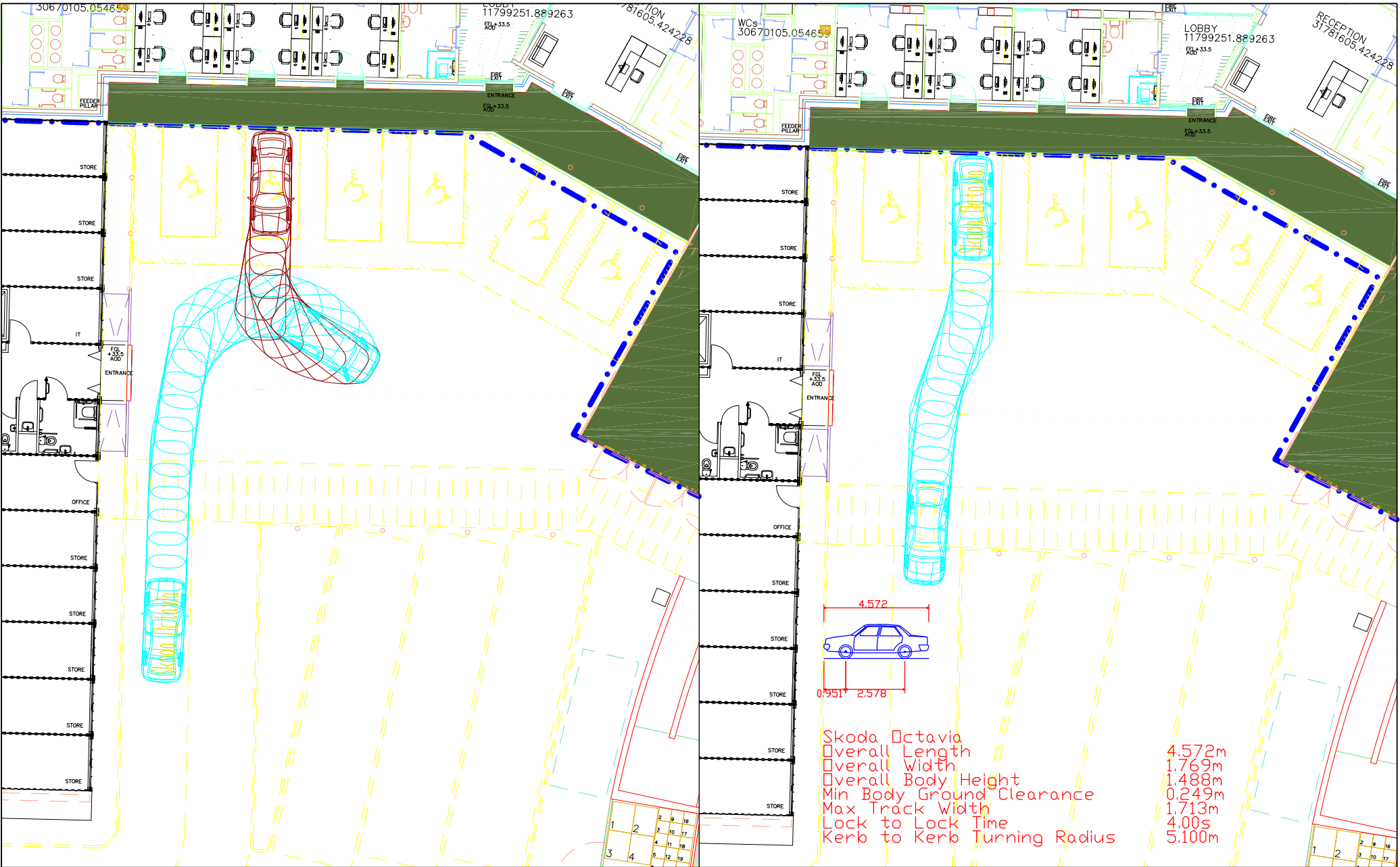


Date: August 2016
 Scale: 1:250@A3
 Source: AAM / PMA
 Drawing No. PI560/SPA



PI560: Roundhouse, Chalk Farm Road, NW1 8EH
 Figure 8.
 Swept Path Analysis: Skip Lorry

PAUL MEW ASSOCIATES
 TRAFFIC CONSULTANTS
 Plym House, 21 Enterprise Way, London SW18 1FZ
 Tel: 0208 780 0426
 E-mail: paul.mew@pma-traffic.co.uk Website: www.pma-traffic.co.uk



<p>Date: August 2016 Scale: 1:150@A3 Source: AAM / PMA Drawing No. PI560/SPA</p>		<p>PI560: Roundhouse, Chalk Farm Road, NW1 8EH Figure 9. Swept Path Analysis: Disabled Parking Bays</p>	<p>PAUL MEW ASSOCIATES TRAFFIC CONSULTANTS Flym House, 21 Enterprise Way, London SW18 1FZ Tel: 0208 780 0426 Email: paul.mew@pma-traffic.co.uk Website: www.pma-traffic.co.uk</p>
--	--	---	---

