



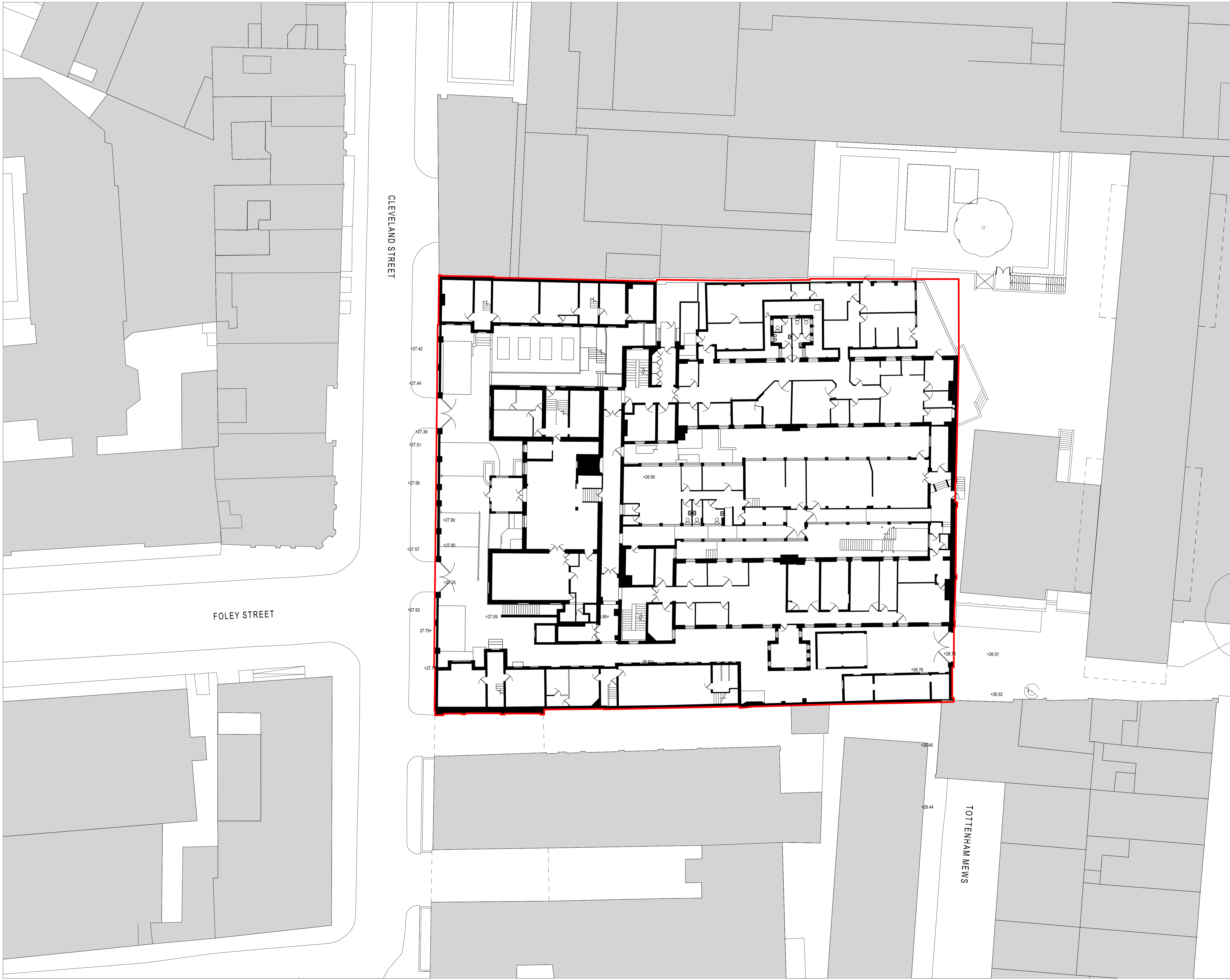
Notes

- All dimensions to be checked on site
- Do not scale off this drawing
- All dimensions are shown in mm unless otherwise stated
- Refer to drawing issue sheet for purpose of issue
- If in doubt ask
- © Llewelyn Davies

Key plan

0 2 4 6 8 10
Metres

FOR PLANNING	20.01.17	GC
No. Revisions	Description	Date By
Structural Consultant		
AECOM	020 7061 7000	
Services Consultant		
Arup	020 7636 1531	
Cost Consultant		
Equals Consulting	020 7580 3360	
Planning Consultant		
TEMPLE	020 7394 3700	
Project Title		
Middlesex Hospital Annex		
Client		
University College London		
Hospitals Charity (UCLHC)		
Drawing Title		
Existing Basement		
Project Number	Drawing Number	Revision
LD15 078.00	P-XTG-LB1	
Scale @ A1		
1:200		
Date		
20/01/2017		
Architects		



Notes

- All dimensions to be checked on site
- Do not scale off this drawing
- All dimensions are shown in mm unless otherwise stated
- Refer to drawing issue sheet for purpose of issue
- If in doubt ask
- © Llewelyn Davies

Key plan

0 2 4 6 8 10
Metres

FOR PLANNING	20.01.17	GC
No. Revisions	Description	Date By
Structural Consultant	AECOM	020 7061 7000
Services Consultant	Arup	020 7636 1531
Cost Consultant	Equals Consulting	020 7580 3360
Planning Consultant	TEMPLE	020 7394 3700
Project Title	Middlesex Hospital Annex	
Client	University College London Hospitals Charity (UCLHC)	
Drawing Title	Existing Ground Floor	
Project Number	Drawing Number	Revision
LD15 078.00	P-XTG-L00	
Scale @ A1	1:200	
Date	20/01/2017	
Architects	LLEWELYN DAVIES	

LLEWELYN DAVIES

3rd floor | 3-5 Rathbone Place | London | W1T 1HJ
 T +44(0)20 7907 7900 | E london@ldavies.com
 www.ldavies.com



Notes

- All dimensions to be checked on site
- Do not scale off this drawing
- All dimensions are shown in mm unless otherwise stated
- Refer to drawing issue sheet for purpose of issue
- If in doubt ask
- © Llewelyn Davies

Key plan

0 2 4 6 8 10
Metres

FOLEY STREET

CLEVELAND STREET

TOTTENHAM MEWS

FOR PLANNING		20.01.17	GC
No.	Revisions Description	Date	By
Structural Consultant			
AECOM		020 7061 7000	
Services Consultant			
Arup		020 7636 1531	
Cost Consultant			
Equals Consulting		020 7580 3360	
Planning Consultant			
TEMPLE		020 7394 3700	

Project Title
Middlesex Hospital Annex
 Client
**University College London
 Hospitals Charity (UCLHC)**

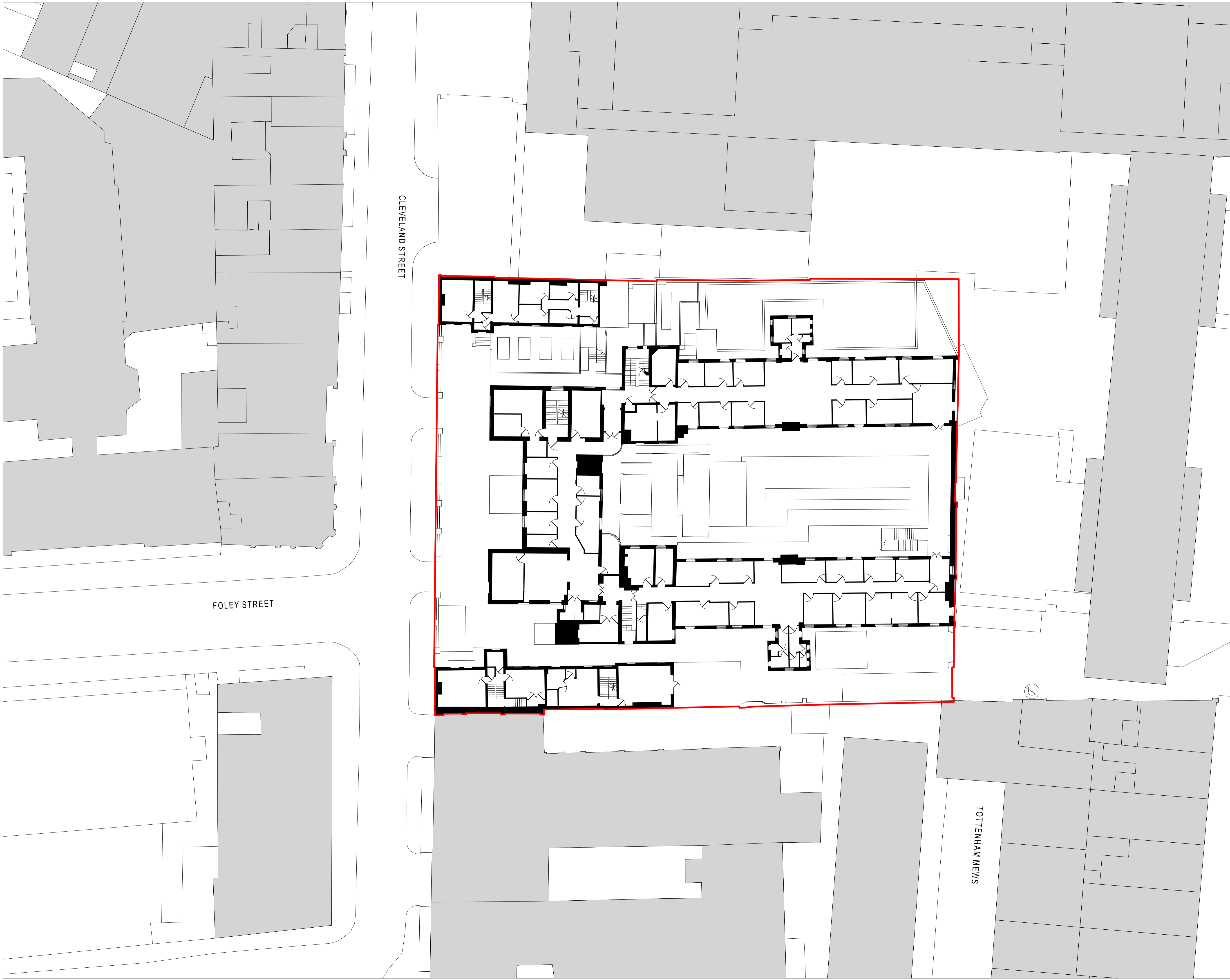
Drawing Title
Existing First Floor

Project Number	Drawing Number	Revision
LD15 078.00	P-XTG-L01	

Scale @ A1
 1:200
 Date
 20/01/2017
 Architects

LLEWELYN DAVIES

3rd floor | 3-5 Rathbone Place | London | W1T 1HJ
 T +44(0)20 7907 7900 | E london@ldavies.com
 www.ldavies.com



Notes

- All dimensions to be checked on site
- Do not scale off this drawing
- All dimensions are shown in mm unless otherwise stated
- Refer to drawing issue sheet for purpose of issue
- If in doubt ask
- © Llewelyn Davies

Key plan

0 2 4 6 8 10
Metres

No.	Revisions	Description	Date	By
FOR PLANNING			20.01.17	GC
Structural Consultant				
AECOM			020 7061 7000	
Services Consultant				
Arup			020 7636 1531	
Cost Consultant				
Equals Consulting			020 7580 3360	
Planning Consultant				
TEMPLE			020 7394 3700	

Project Title
Middlesex Hospital Annex

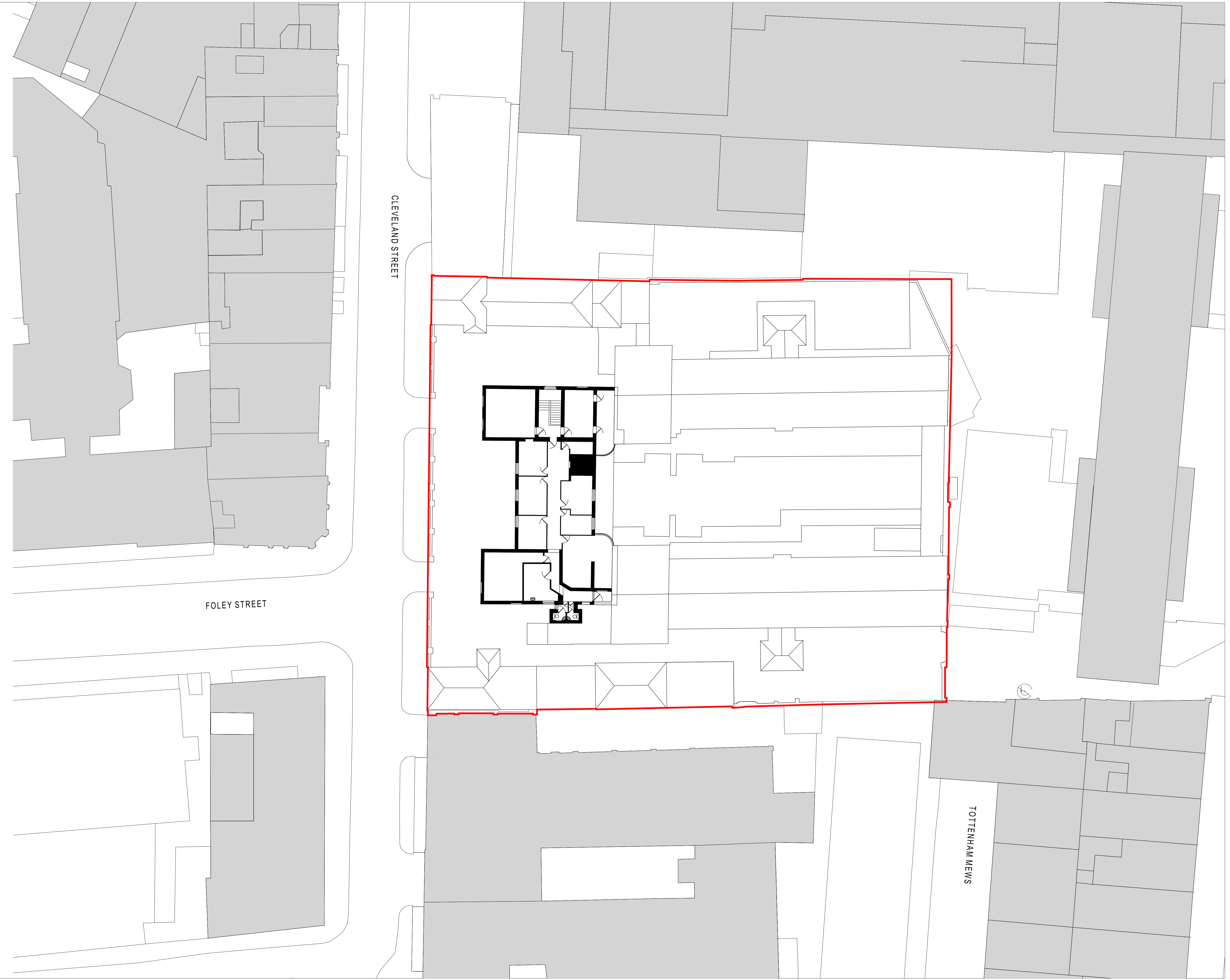
Client
**University College London
 Hospitals Charity (UCLHC)**

Drawing Title
Existing Second Floor

Project Number	Drawing Number	Revision
LD15 078.00	P-XTG-L02	
Scale @ A1		
1:200		
Date		
20/01/2017		
Architects		

LLEWELYN DAVIES

3rd floor | 3-5 Rathbone Place | London | W1T 1HJ
 T +44(0)20 7907 7900 | E london@ldavies.com
 www.ldavies.com



Notes

- All dimensions to be checked on site
- Do not scale off this drawing
- All dimensions are shown in mm unless otherwise stated
- Refer to drawing issue sheet for purpose of issue
- If in doubt ask
- © Llewelyn Davies

Key plan

0 2 4 6 8 10
Metres

No.	Revisions	Description	Date	By
FOR PLANNING			20.01.17	GC
Structural Consultant				
AECOM			020 7061 7000	
Services Consultant				
Arup			020 7636 1531	
Cost Consultant				
Equals Consulting			020 7580 3360	
Planning Consultant				
TEMPLE			020 7394 3700	

Project Title
Middlesex Hospital Annex

Client
**University College London
 Hospitals Charity (UCLHC)**

Drawing Title
Existing Third Floor

Project Number	Drawing Number	Revision
LD15 078.00	P-XTG-L03	

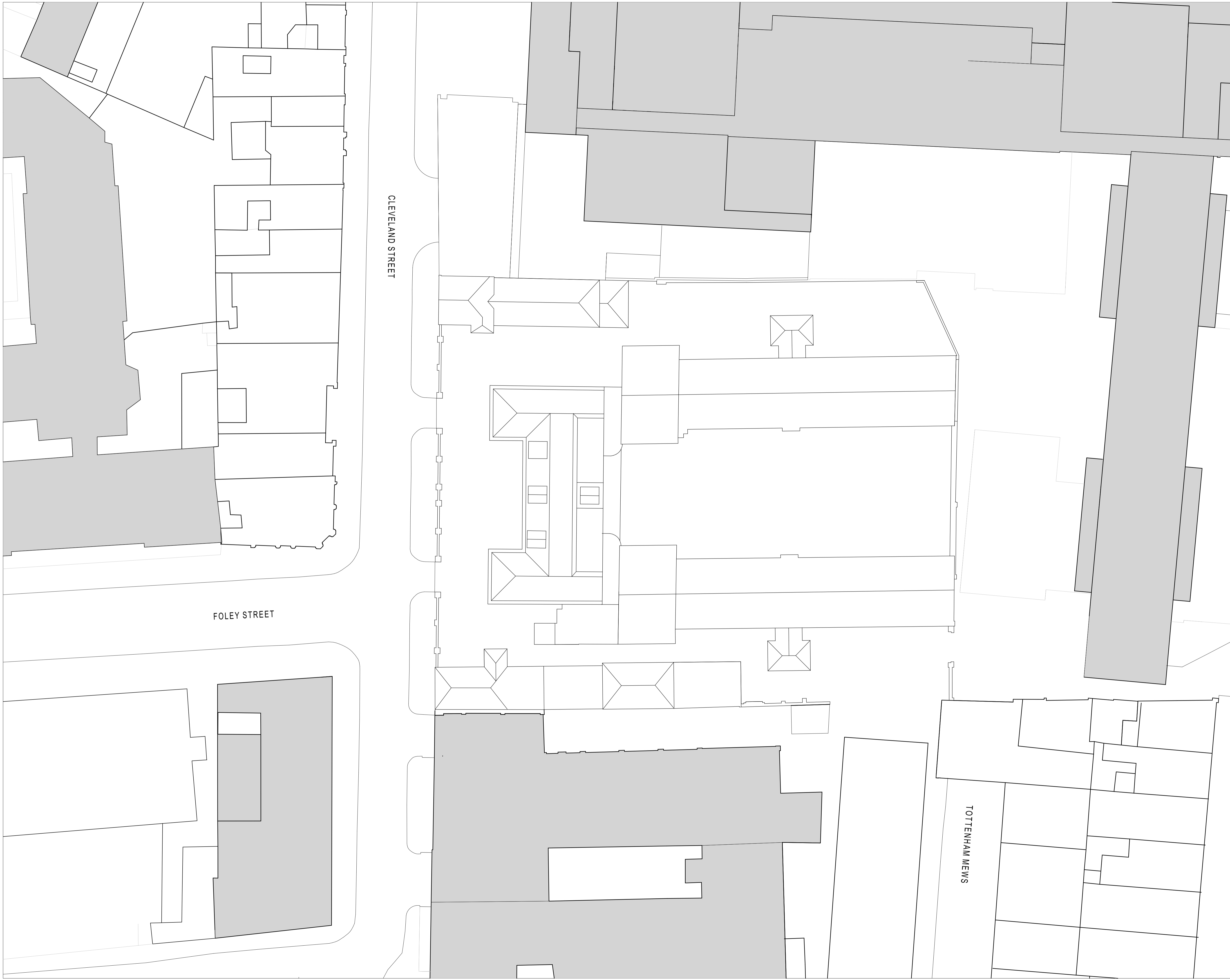
Scale @ A1
 1:200

Date
 20/01/2017

Architects

LLEWELYN DAVIES

3rd floor | 3-5 Rathbone Place | London | W1T 1HJ
 T +44(0)20 7907 7900 | E london@ldavies.com
 www.ldavies.com



Notes

- All dimensions to be checked on site
- Do not scale off this drawing
- All dimensions are shown in mm unless otherwise stated
- Refer to drawing issue sheet for purpose of issue
- If in doubt ask
- © Llewelyn Davies

Key plan

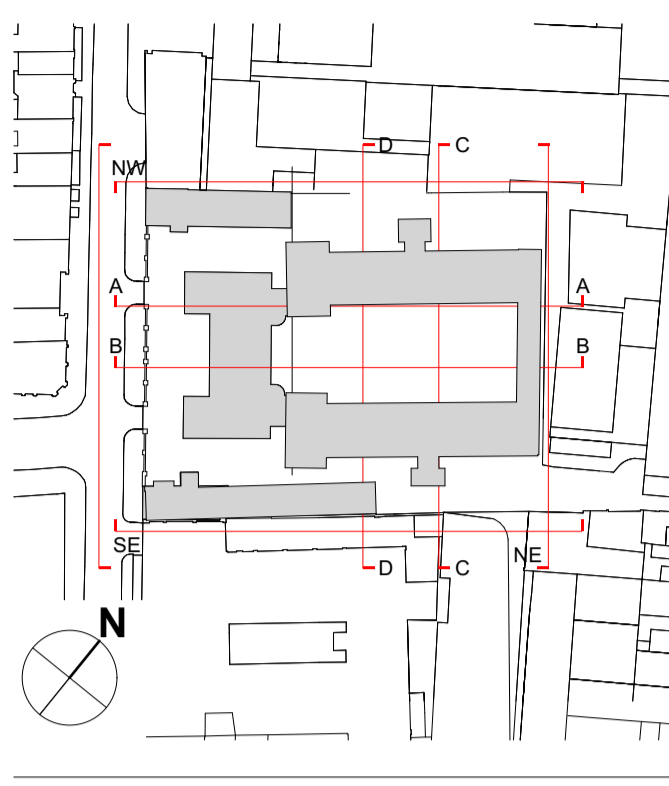
0 2 4 6 8 10 Metres

FOR PLANNING	20.01.17	GC
No. Revisions	Description	Date By
Structural Consultant		
AECOM	020 7061 7000	
Services Consultant		
Arup	020 7636 1531	
Cost Consultant		
Equals Consulting	020 7580 3360	
Planning Consultant		
TEMPLE	020 7394 3700	
Project Title		
Middlesex Hospital Annex		
Client		
University College London		
Hospitals Charity (UCLHC)		
Drawing Title		
Existing Roof		
Project Number	Drawing Number	Revision
LD15 078.00	P-XTG-LRF	
Scale @ A1		
1:200		
Date		
20/01/2017		
Architects		

Notes

- All dimensions to be checked on site
- Do not scale off this drawing
- All dimensions are shown in mm unless otherwise stated
- Refer to drawing issue sheet for purpose of issue
- If in doubt ask
- © Lewelyn Davies

Key plan



FOR PLANNING 20.01.17 GC

No.	Revisions	Description	Date	By
Structural Consultant				
AECOM			020 7061 7000	
Services Consultant				
Arup			020 7636 1531	
Cost Consultant				
Equals Consulting			020 7580 3360	
Planning Consultant				
TEMPLE			020 7394 3700	

Project Title
Middlesex Hospital Annex

Client
University College London
Hospitals Charity (UCLHC)

Drawing Title
Existing Elevations 01 02

Project Number Drawing Number Revision
LD15 078.00 E-XTG-01-02

Scale @ A1
1:200

Date
20/01/2017

Architects

LLEWELYN DAVIES

3rd floor | 3-5 Rathbone Place | London | W1T 1HJ
T +44(0)20 7907 7900 | E london@ldavies.com
www.ldavies.com



TOTTENHAM MEWS DAY HOSPITAL EXISTING DEVELOPMENT WELLCOME BUILDING HOWLAND ST

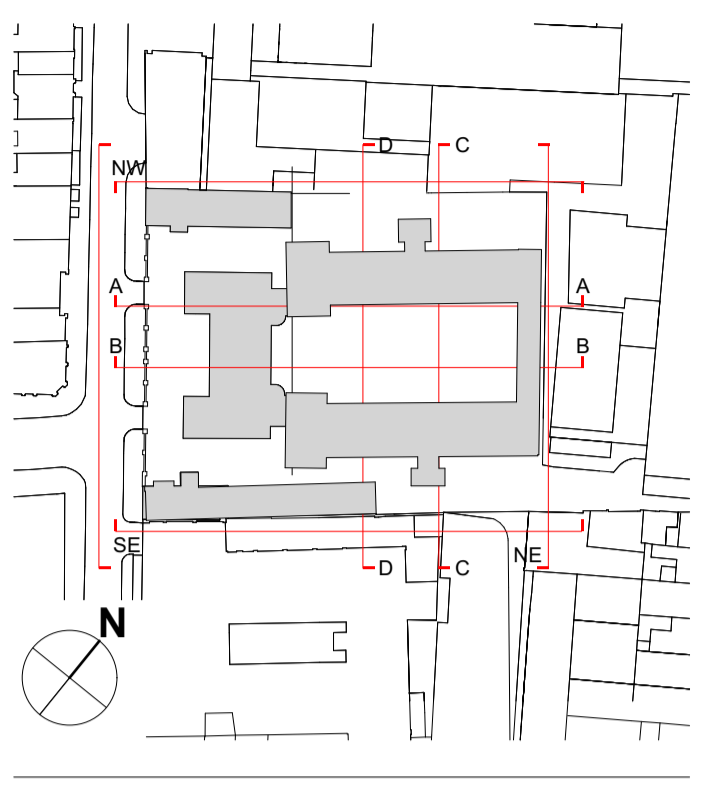


CLEVELAND ST EXISTING DEVELOPMENT ASTOR COLLEGE CHARLOTTE ST

Notes

- All dimensions to be checked on site
- Do not scale off this drawing
- All dimensions are shown in mm unless otherwise stated
- Refer to drawing issue sheet for purpose of issue
- If in doubt ask
- © Llewelyn Davies

Key plan



FOR PLANNING 20.01.17 GC

No.	Revisions	Description	Date	By
Structural Consultant				
AECOM			020 7061 7000	
Services Consultant				
Arup			020 7636 1531	
Cost Consultant				
Equals Consulting			020 7580 3360	
Planning Consultant				
TEMPLE			020 7394 3700	

Project Title

Middlesex Hospital Annex
Client

University College London
Hospitals Charity (UCLHC)

Drawing Title

Existing Elevations 03 04

Project Number Drawing Number Revision

LD15 078.00 E-XTG-03-04

Scale @ A1
1:200

Date
20/01/2017

Architects

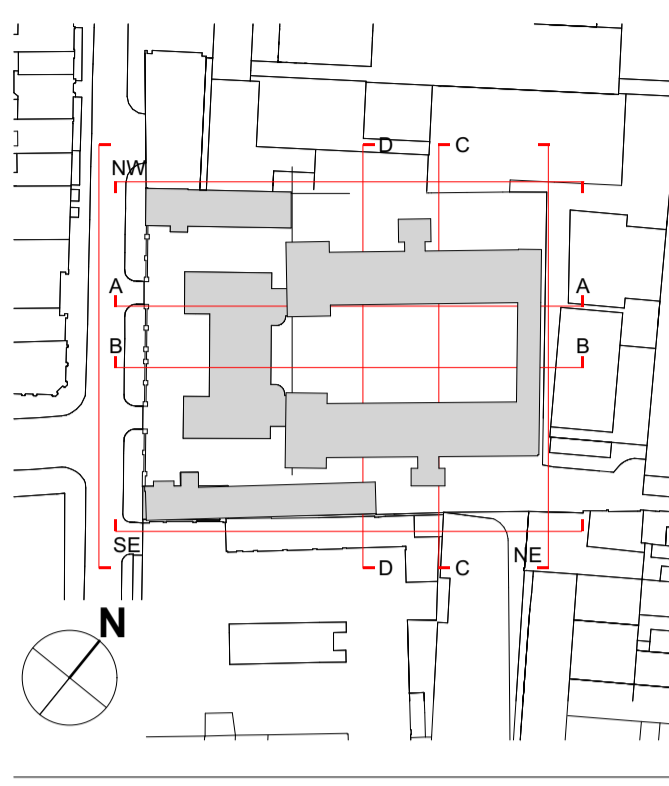
LLEWELYN DAVIES

3rd floor | 3-5 Rathbone Place | London | W1T 1HJ
T +44(0)20 7907 7900 | E london@ldavies.com
www.ldavies.com

Notes

- All dimensions to be checked on site
- Do not scale off this drawing
- All dimensions are shown in mm unless otherwise stated
- Refer to drawing issue sheet for purpose of issue
- If in doubt ask
- © Llewelyn Davies

Key plan



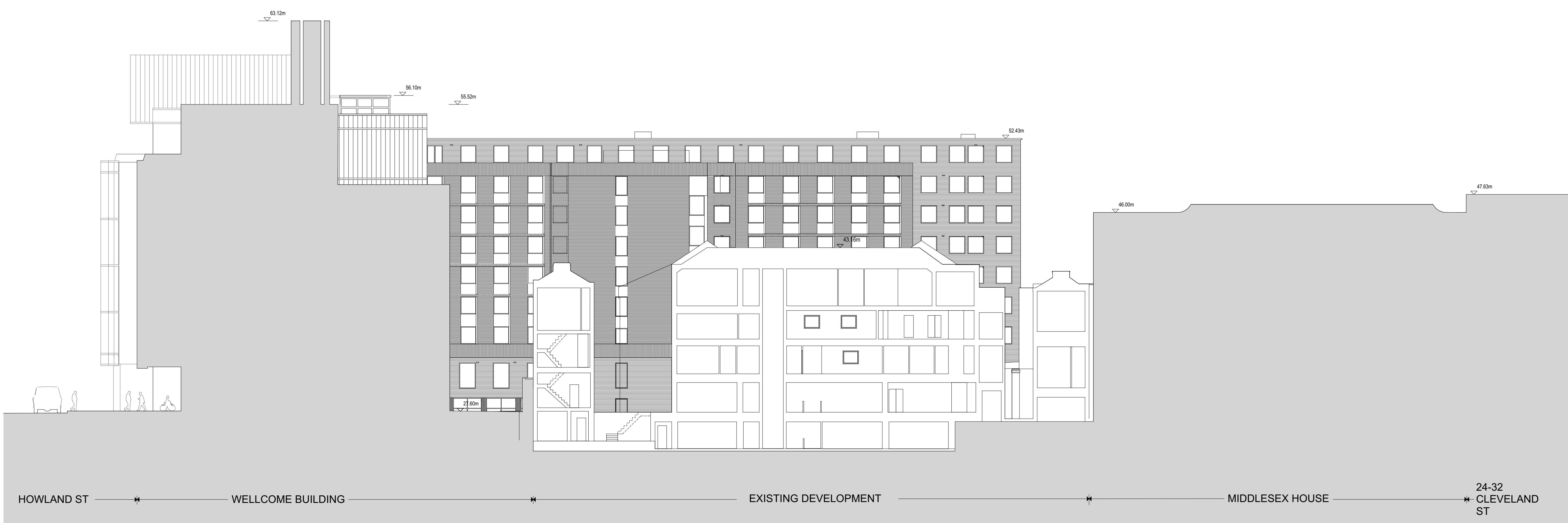
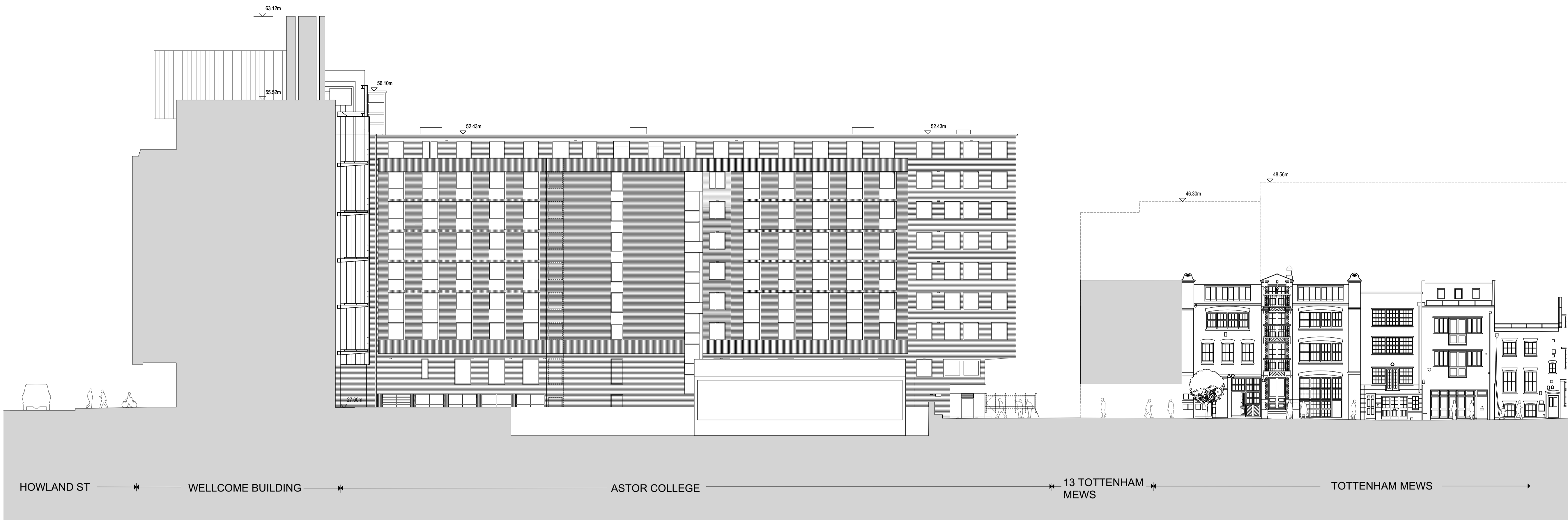
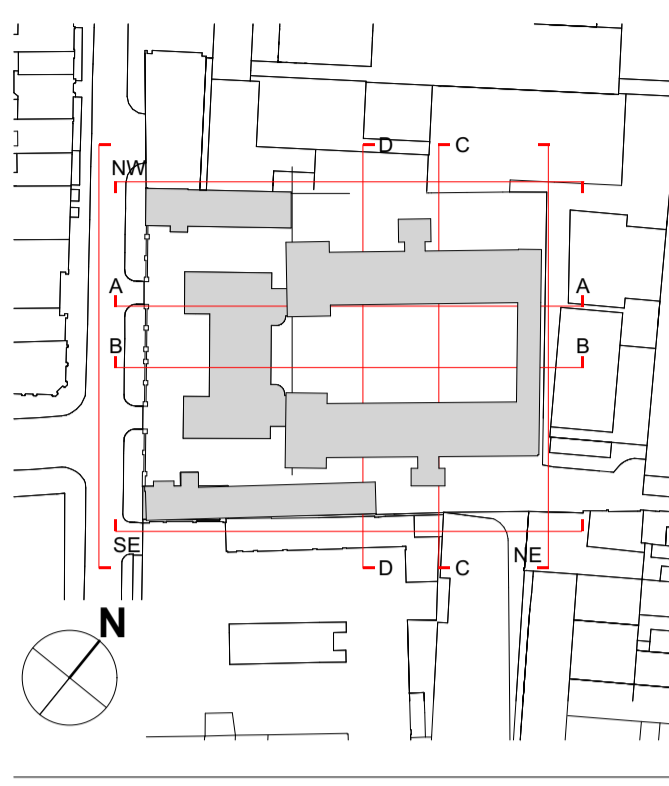
No.	Revisions	Description	Date	By
FOR PLANNING	20.01.17	GC		
Structural Consultant				
AECOM	020 7061 7000			
Services Consultant				
Arup	020 7636 1531			
Cost Consultant				
Equals Consulting	020 7580 3360			
Planning Consultant				
TEMPLE	020 7394 3700			
Project Title				
Middlesex Hospital Annex				
Client				
University College London				
Hospitals Charity (UCLHC)				
Drawing Title				
Existing AA-BB Sections				
Project Number				
LD15 078.00	S-XTG-AA-BB			
Drawing Number				
Revision				
Scale @ A1				
1:200				
Date				
20/01/2017				
Architects				

LLEWELYN DAVIES
 3rd floor | 3-5 Rathbone Place | London | W1T 1HJ
 T +44(0)20 7907 7900 | E london@ldavies.com
 www.ldavies.com

Notes

- All dimensions to be checked on site
- Do not scale off this drawing
- All dimensions are shown in mm unless otherwise stated
- Refer to drawing issue sheet for purpose of issue
- If in doubt ask
- © Llewelyn Davies

Key plan



FOR PLANNING 20.01.17 GC

No.	Revisions	Description	Date	By
		Structural Consultant		
		AECOM	020 7061 7000	
		Services Consultant		
		Arup	020 7636 1531	
		Cost Consultant		
		Equals Consulting	020 7580 3360	
		Planning Consultant		
		TEMPLE	020 7394 3700	

Project Title
Middlesex Hospital Annex

Client
University College London
Hospitals Charity (UCLHC)

Drawing Title
Existing CC-DD Sections

Project Number	Drawing Number	Revision
LD15 078.00	S-XTG-CC-DD	

Scale @ A1
1:200

Date
20/01/2017

Architects
LLEWELYN DAVIES

LLEWELYN DAVIES

3rd floor | 3-5 Rathbone Place | London | W1T 1HJ
T +44(0)20 7907 7900 | E london@ldavies.com
www.ldavies.com