

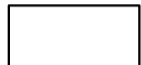


General Notes

All dimensions to be verified on site
To be read in conjunction with all relevant documents
In the event of discrepancy notify the Architect immediately
This document is copyright of Hugh Cullum Architects Ltd

Issue Status

SK Information F Feasibility D Design
P Permissions S Scheme T Tender
C Construction E Existing Condition

DRAWING KEY

-  Existing
-  Proposed
-  Demolished



NO. 13 PRINCE ALBERT ROAD

NO. 12 PRINCE ALBERT ROAD
SHOWN INDICATIVE, NOT PART OF
THIS APPLICATION

(_): Issued for Planning (06.09.11/YH)

Revision: Information (date/drawn by)

5000mm
2500
500 1000

HUGH CULLUM
ARCHITECTS LTD
Bloomsbury Design
61b Judd Street
London WC1H 9QT
t 020 7383 7647
f 020 7387 7645
mail@hughcullum.com

13 Prince Albert Road
Planning: Existing conditions
Front Elevation
1:50@A1 July 2011
PA013-P120(_)



NO. 12 PRINCE ALBERT ROAD
 SHOWN INDICATIVE, NOT PART OF
 THIS APPLICATION

NO. 13 PRINCE ALBERT ROAD




General Notes

All dimensions to be verified on site
 To be read in conjunction with all relevant documents
 In the event of discrepancy notify the Architect immediately
 This document is copyright of Hugh Cullum Architects Ltd

Issue Status

SK Information F Feasibility D Design
 P Permissions S Scheme T Tender
 C Construction E Existing Condition

DRAWING KEY

-  Existing
-  Proposed
-  Demolished

(_): Issued for Planning (06.09.11/YH)

Revision: Information (date/drawn by)

5000mm
2500
1000
500

HUGH CULLUM ARCHITECTS LTD
 Bloomsbury Design
 61b Judd Street
 London WC1H 9QT
 t 020 7383 7647
 f 020 7387 7645
 mail@hughcullum.com

13 Prince Albert Road
 Planning: Existing conditions
 Rear Elevation
 1:50@A1 July 2011
PA013-P121(_)




General Notes

All dimensions to be verified on site
To be read in conjunction with all relevant documents
In the event of discrepancy notify the Architect immediately
This document is copyright of Hugh Cullum Architects Ltd

Issue Status

SK Information F Feasibility D Design
P Permissions S Scheme T Tender
C Construction E Existing Condition

DRAWING KEY

-  Existing
-  Proposed
-  Demolished



(_): Issued for Planning (06.09.11/YH)

Revision: Information (date/drawn by)

5000mm
2500
1000
500

HUGH CULLUM 13 Prince Albert Road
ARCHITECTS LTD
Bloomsbury Design
61b Judd Street
London WC1H 9QT
t 020 7383 7647
f 020 7387 7645
mail@hughcullum.com

Planning: Existing conditions
Side Elevation
1:50@A1 July 2011
PA013-P122(_)

General Notes

All dimensions to be verified on site
To be read in conjunction with all relevant documents
In the event of discrepancy notify the Architect immediately
This document is copyright of Hugh Cullum Architects Ltd

Issue Status

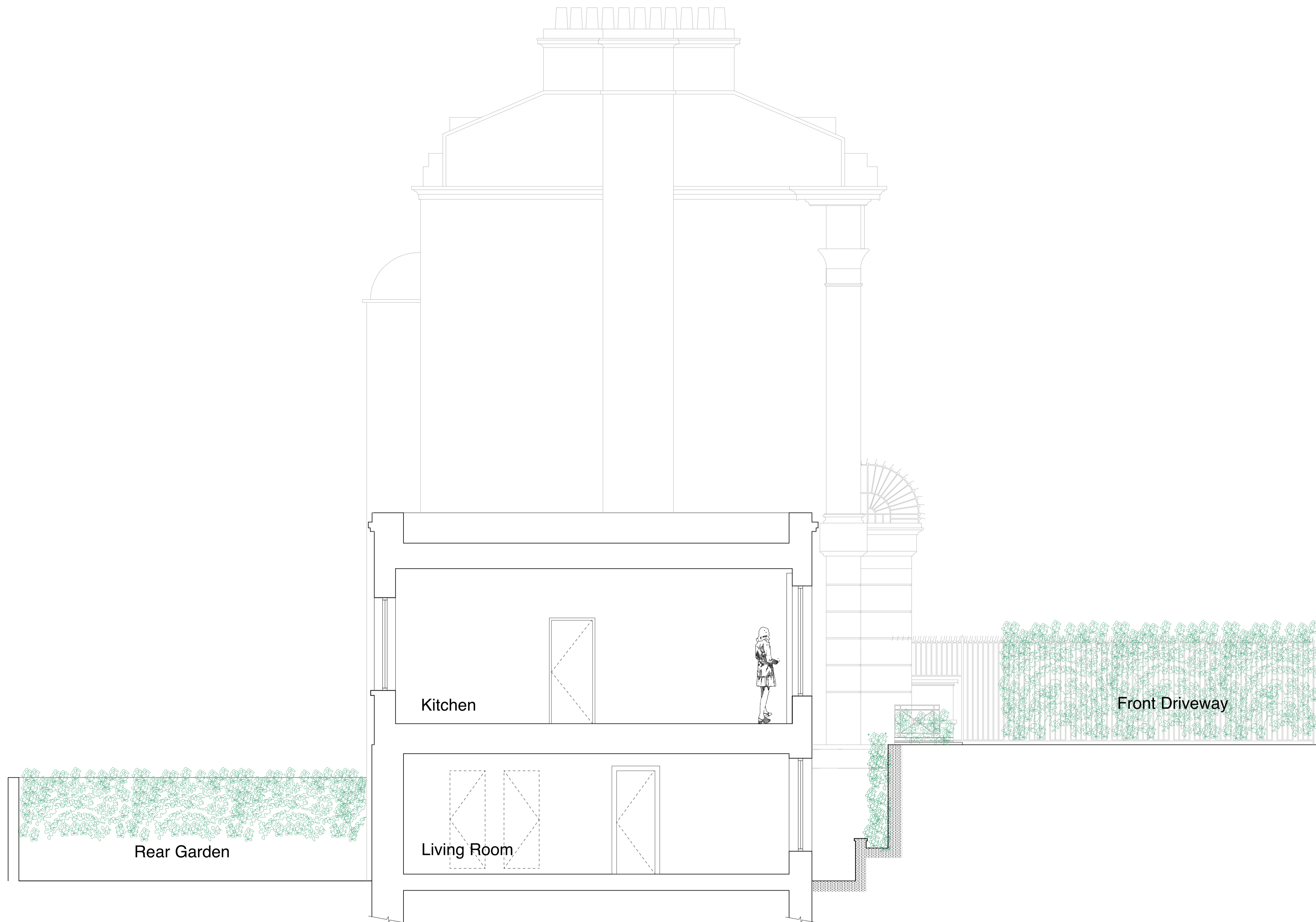
SK Information F Feasibility D Design
P Permissions S Scheme T Tender
C Construction E Existing Condition

DRAWING KEY

Existing

Proposed

Demolished



(_) : Issued for Planning (06.09.11/YH)

Revision: Information (date/drawn by)

HUGH CULLUM ARCHITECTS LTD
Bloomsbury Design
61b Judd Street
London WC1H 9QT
t 020 7383 7647
f 020 7387 7645
mail@hughcullum.com

13 Prince Albert Road
Planning: Existing conditions
Section
1:50@A1 July 2011
PA013-P123(_)