




General Notes

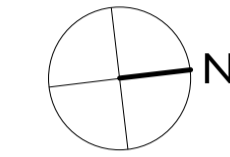
All dimensions to be verified on site
To be read in conjunction with all relevant documents
In the event of discrepancy notify the Architect immediately
This document is copyright of Hugh Cullum Architects Ltd

Issue Status

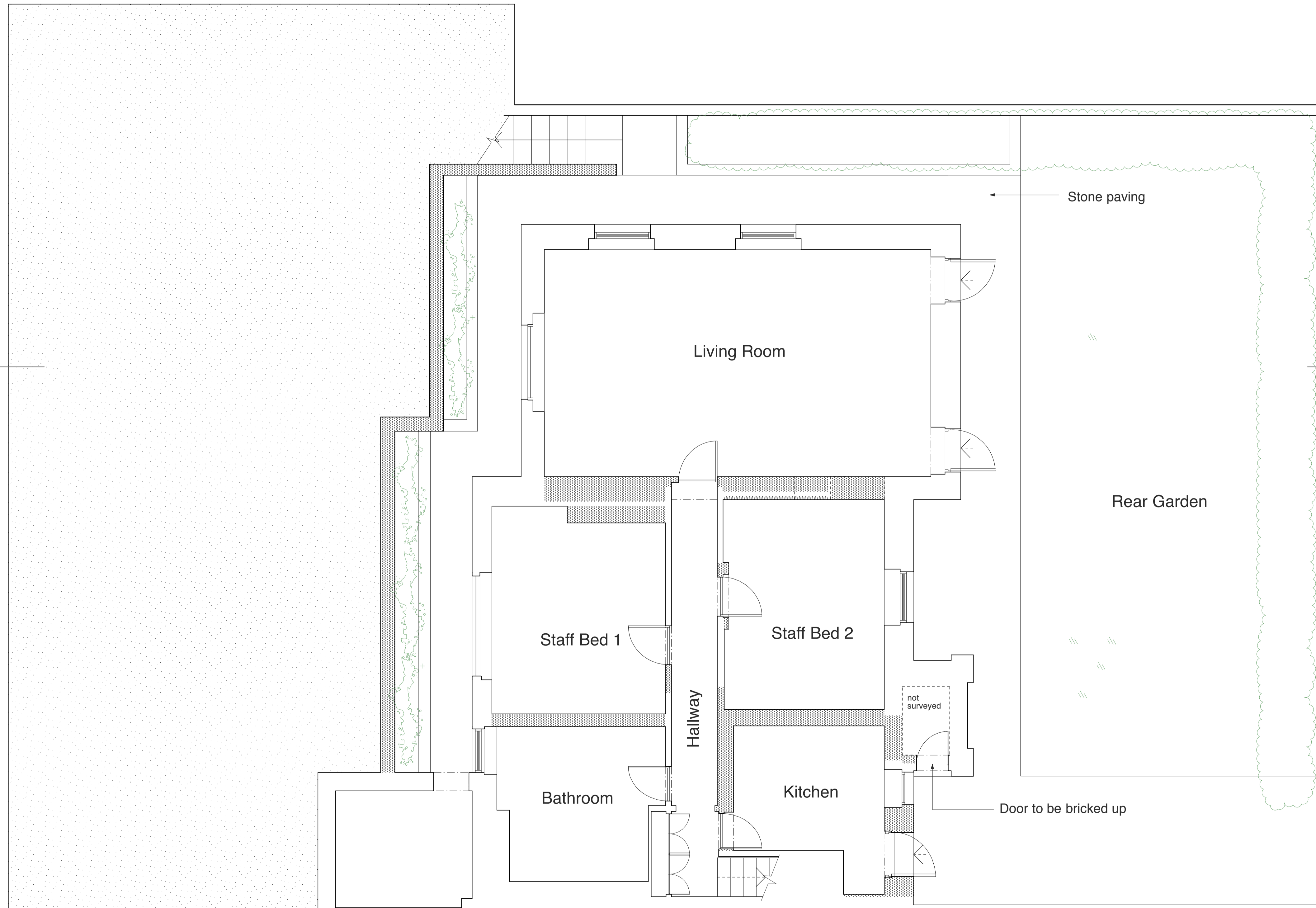
SK Information F Feasibility D Design
P Permissions S Scheme T Tender
C Construction E Existing Condition

DRAWING KEY

-  Existing
-  Proposed
-  Demolished



Section



(_) : Issued for Planning (06.09.11/YH)

Revision: Information (date/drawn by)

HUGH CULLUM ARCHITECTS LTD
Bloomsbury Design
61b Judd Street
London WC1H 9QT
t 020 7383 7647
f 020 7387 7645
mail@hughcullum.com

13 Prince Albert Road
Planning: Existing conditions
Lower Ground Floor Plan
1:50@A1 July 2011
PA013-P111(_)




General Notes

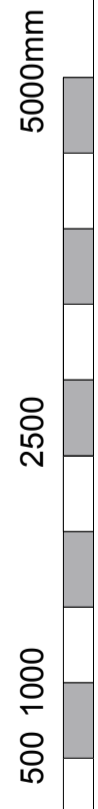
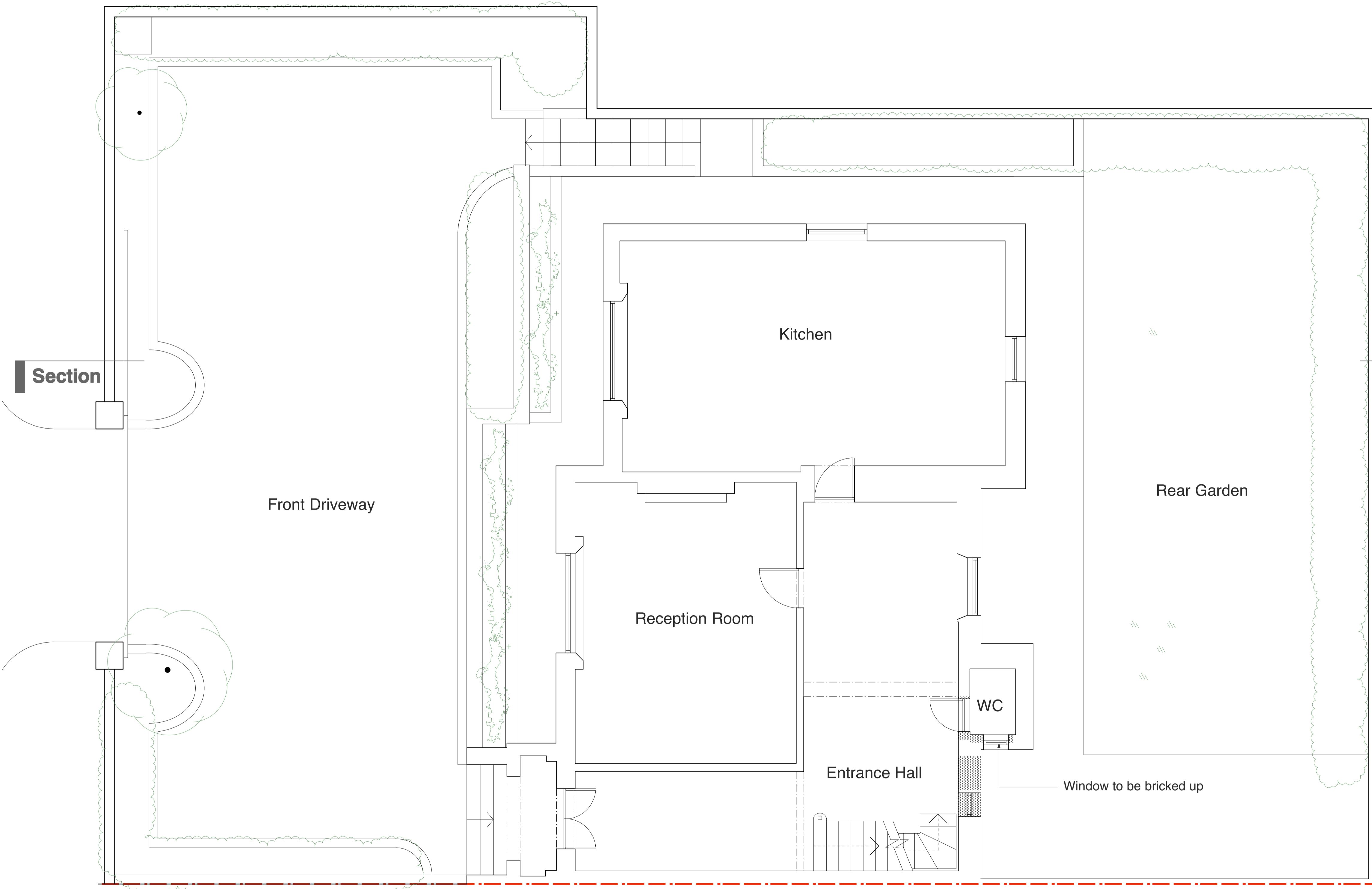
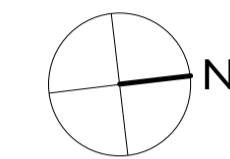
All dimensions to be verified on site
To be read in conjunction with all relevant documents
In the event of discrepancy notify the Architect immediately
This document is copyright of Hugh Cullum Architects Ltd

Issue Status

SK Information F Feasibility D Design
P Permissions S Scheme T Tender
C Construction E Existing Condition

DRAWING KEY

-  Existing
-  Proposed
-  Demolished



(_) : Issued for Planning (06.09.11/YH)

Revision: Information (date/drawn by)

HUGH CULLUM ARCHITECTS LTD
Bloomsbury Design
61b Judd Street
London WC1H 9QT
t 020 7383 7647
f 020 7387 7645
mail@hughcullum.com

13 Prince Albert Road
Planning: Existing conditions
Ground Floor Plan
1:50@A1 July 2011
PA013-P112(_)

General Notes

All dimensions to be verified on site
To be read in conjunction with all relevant documents
In the event of discrepancy notify the Architect immediately
This document is copyright of Hugh Cullum Architects Ltd

Issue Status

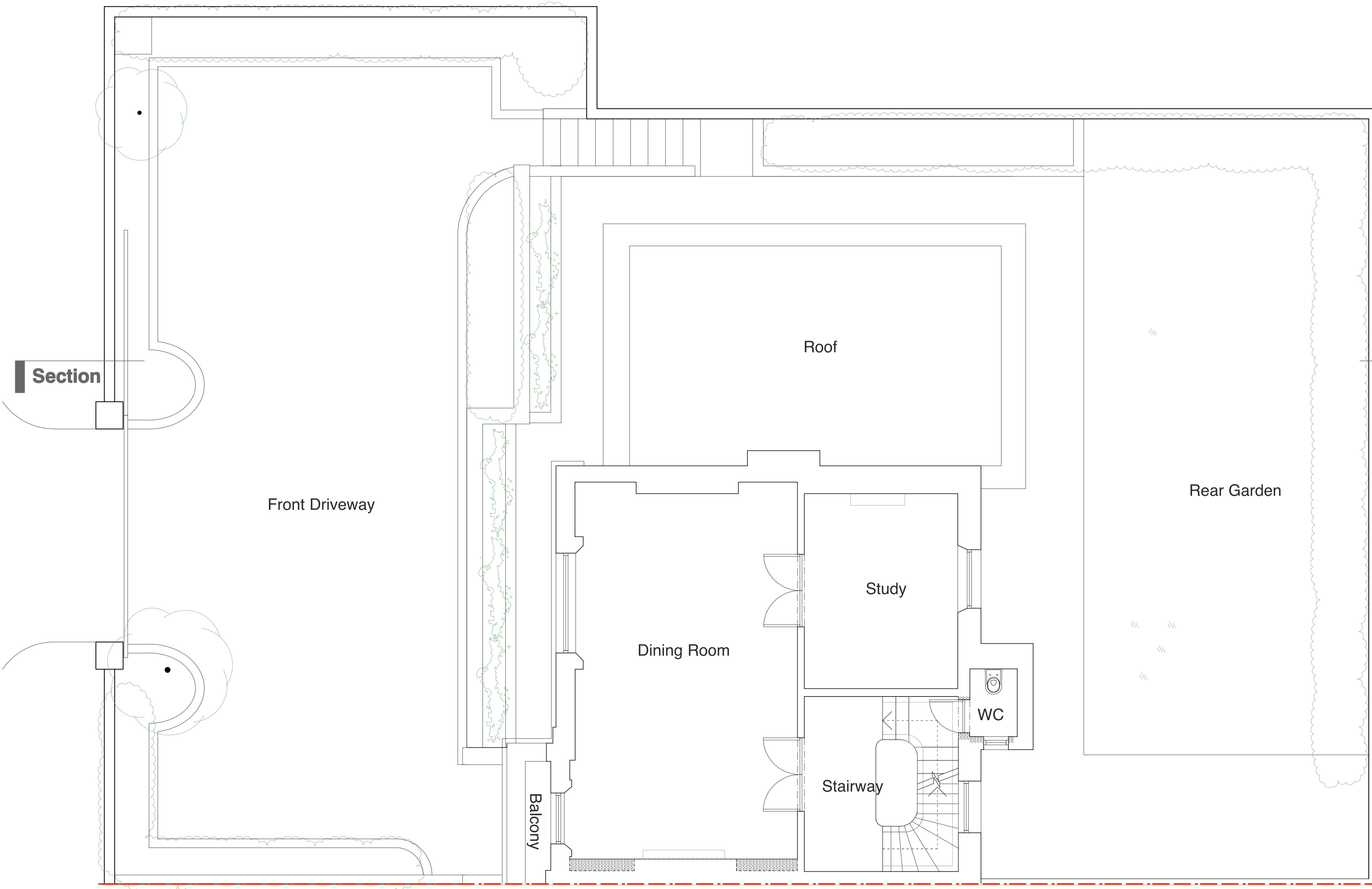
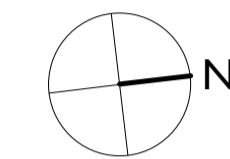
SK Information F Feasibility D Design
P Permissions S Scheme T Tender
C Construction E Existing Condition

DRAWING KEY

Existing

Proposed

Demolished



Section

Front Driveway

Roof

Rear Garden

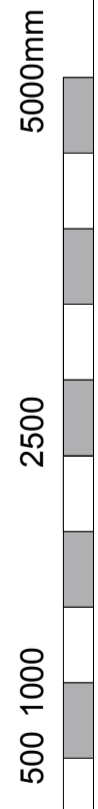
Study

Dining Room

WC

Stairway

Balcony



(_) : Issued for Planning (06.09.11/YH)

Revision: Information (date/drawn by)

HUGH CULLUM ARCHITECTS LTD
Bloomsbury Design
61b Judd Street
London WC1H 9QT
t 020 7383 7647
f 020 7387 7645
mail@hughcullum.com

13 Prince Albert Road
Planning: Existing conditions
First Floor Plan
1:50@A1 July 2011
PA013-P113(_)




General Notes

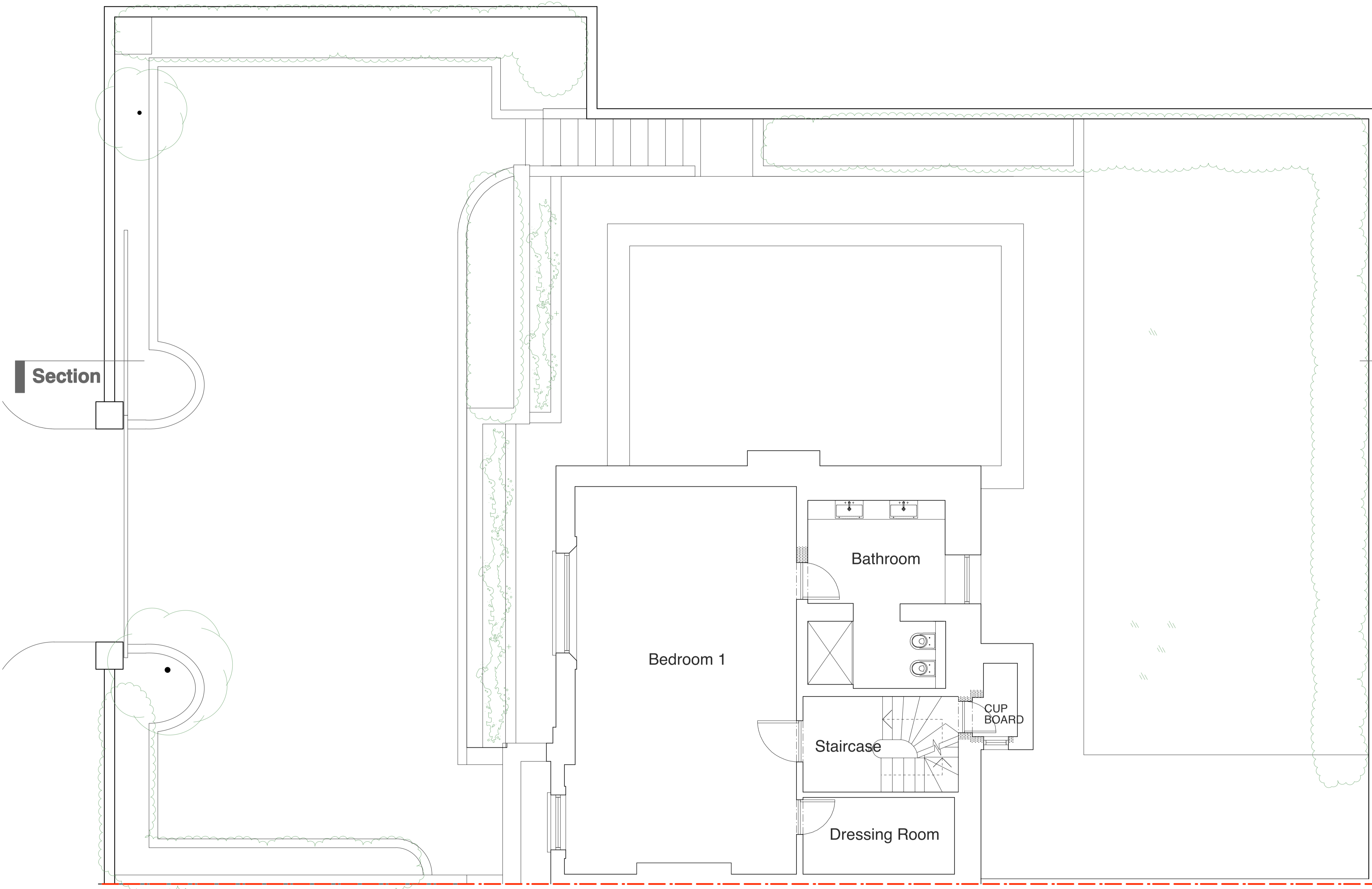
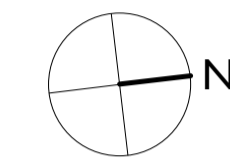
All dimensions to be verified on site
To be read in conjunction with all relevant documents
In the event of discrepancy notify the Architect immediately
This document is copyright of Hugh Cullum Architects Ltd

Issue Status

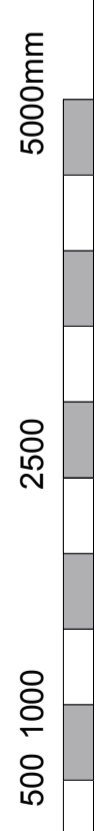
SK Information F Feasibility D Design
P Permissions S Scheme T Tender
C Construction E Existing Condition

DRAWING KEY

-  Existing
-  Proposed
-  Demolished



Section



(_) : Issued for Planning (06.09.11/YH)

Revision: Information (date/drawn by)

HUGH CULLUM
ARCHITECTS LTD
Bloomsbury Design
61b Judd Street
London WC1H 9QT
t 020 7383 7647
f 020 7387 7645
mail@hughcullum.com

13 Prince Albert Road
Planning: Existing conditions
Second Floor Plan
1:50@A1 July 2011
PA013-P114(_)




General Notes

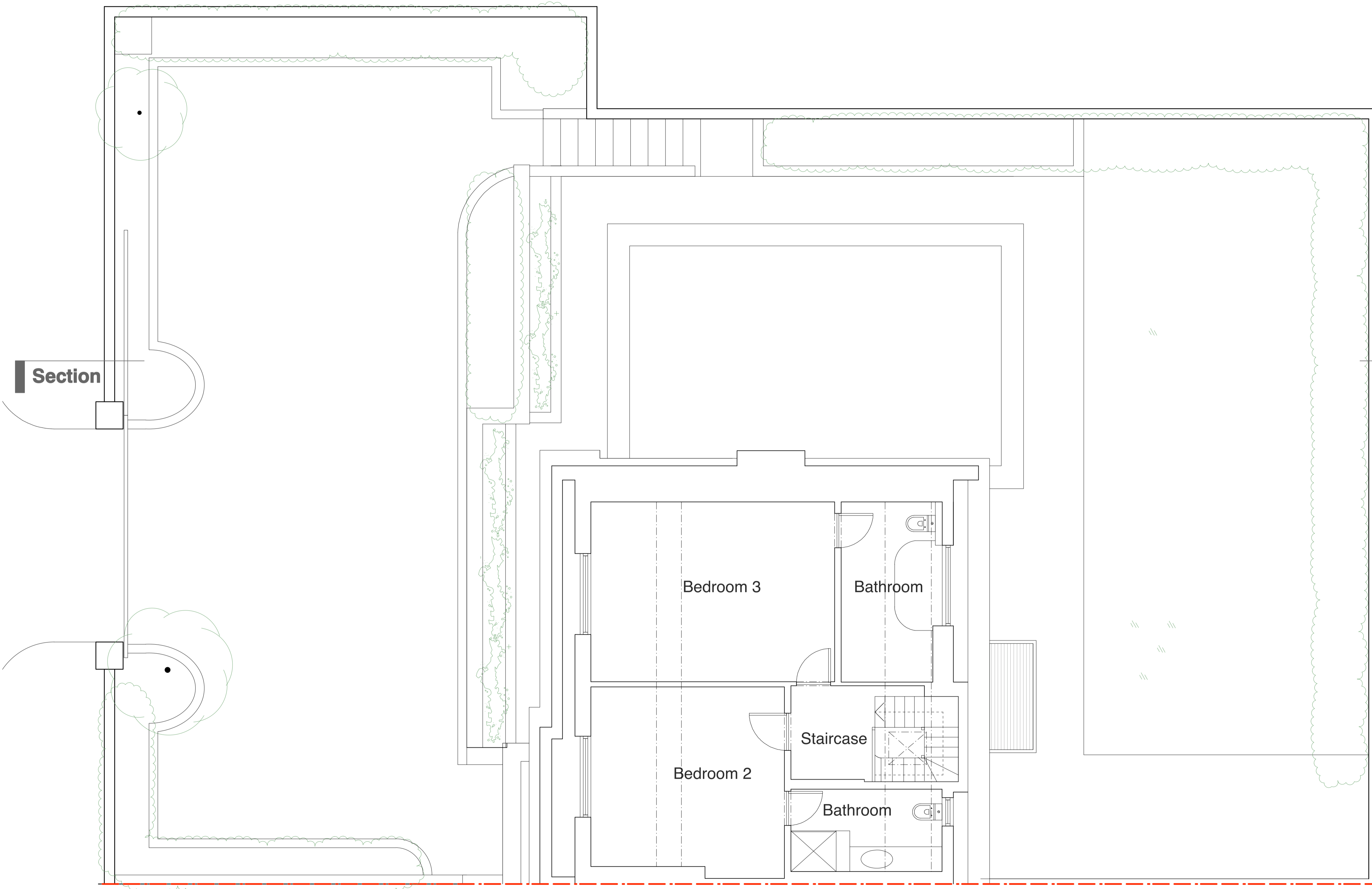
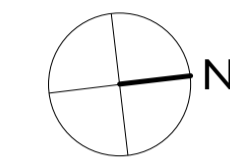
All dimensions to be verified on site
To be read in conjunction with all relevant documents
In the event of discrepancy notify the Architect immediately
This document is copyright of Hugh Cullum Architects Ltd

Issue Status

SK Information F Feasibility D Design
P Permissions S Scheme T Tender
C Construction E Existing Condition

DRAWING KEY

-  Existing
-  Proposed
-  Demolished



5000mm
2500
1000
500

(_) : Issued for Planning (06.09.11/YH)

Revision: Information (date/drawn by)

HUGH CULLUM ARCHITECTS LTD
 Bloomsbury Design
 61b Judd Street
 London WC1H 9QT
 t 020 7383 7647
 f 020 7387 7645
 mail@hughcullum.com

13 Prince Albert Road
 Planning: Existing conditions
 Third Floor Plan
 1:50@A1 July 2011
 PA013-P115(_)




General Notes

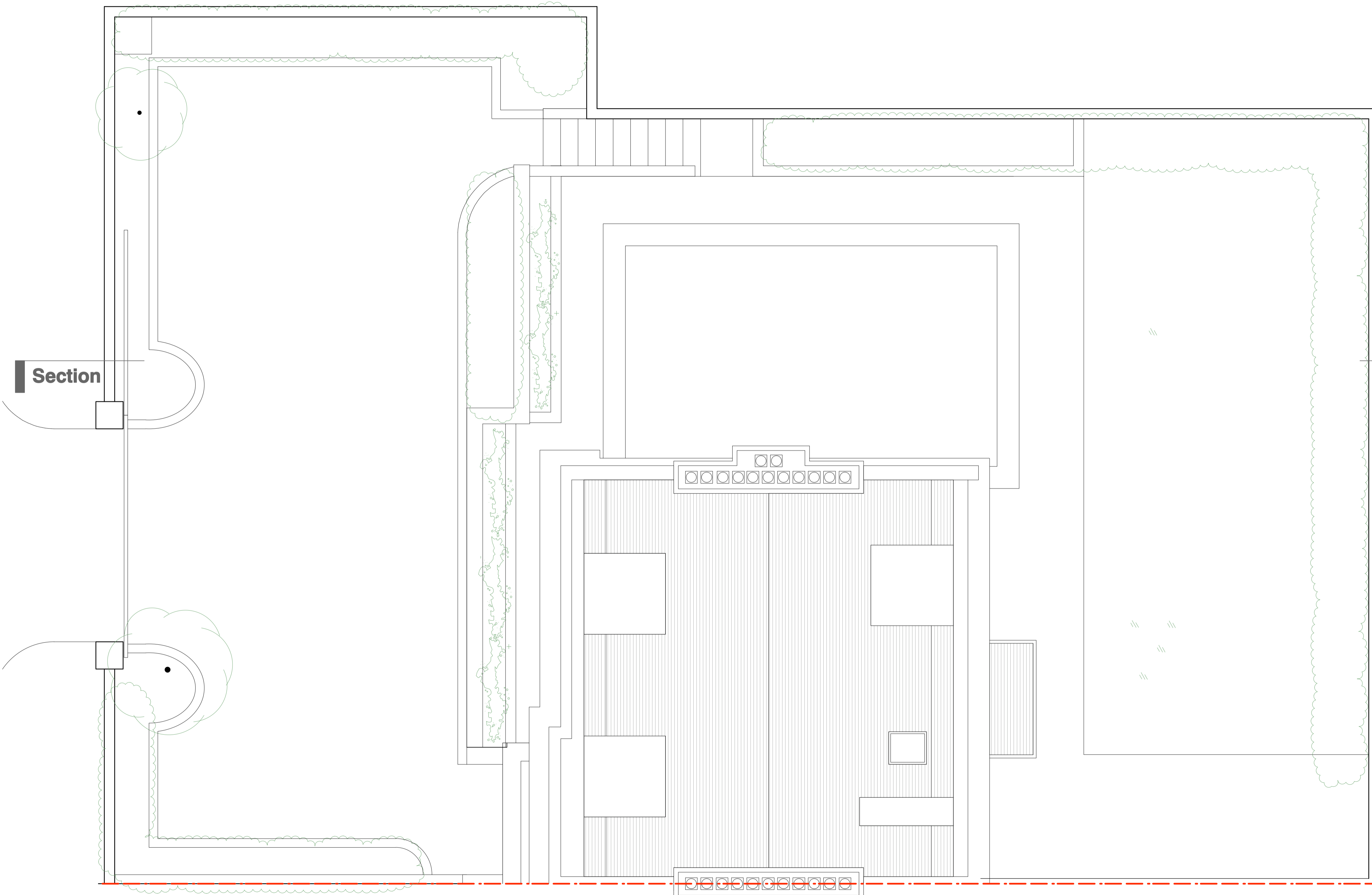
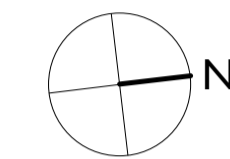
All dimensions to be verified on site
To be read in conjunction with all relevant documents
In the event of discrepancy notify the Architect immediately
This document is copyright of Hugh Cullum Architects Ltd

Issue Status

SK Information F Feasibility D Design
P Permissions S Scheme T Tender
C Construction E Existing Condition

DRAWING KEY

-  Existing
-  Proposed
-  Demolished



Section

(_) : Issued for Planning (06.09.11/YH)

Revision: Information (date/drawn by)

HUGH CULLUM 13 Prince Albert Road
 ARCHITECTS LTD
 Bloomsbury Design
 61b Judd Street
 London WC1H 9QT
 t 020 7383 7647
 f 020 7387 7645
 mail@hughcullum.com

Planning: Existing conditions
 Roof Plan
 1:50@A1 July 2011
PA013-P116(_)