



- All dimensions to be checked on site.
- Do not scale from this drawing
- Report any discrepancies and omissions to Llewelyn Davies Weeks Ltd
- All dimensions are shown in mm unless otherwise stated
- Refer to drawing issue sheet for purpose of issue
- If in doubt ask
- This drawing is Copyright © Llewelyn Davies Weeks Ltd

## Notes

No.	Description	Date	By
C1	Construction Issue	16-10-28	YC
P2	For information only	16-10-19	JD
P1	For information only	16-10-07	CS/JD

Structural Consultant      Services Consultant

ARUP

Project Manager

Cost Consultant

AECOM

Project Title

The Liver Institute  
69-75 Cheries Mews, London  
WC1E 6HX

Client

University College London  
Hospitals Charity (UCLHC)

Drawing Title

Proposed Partitions Plan  
Level 03

Drawing number      Revision

22\_03

C1

Scale @ A3  
1:100

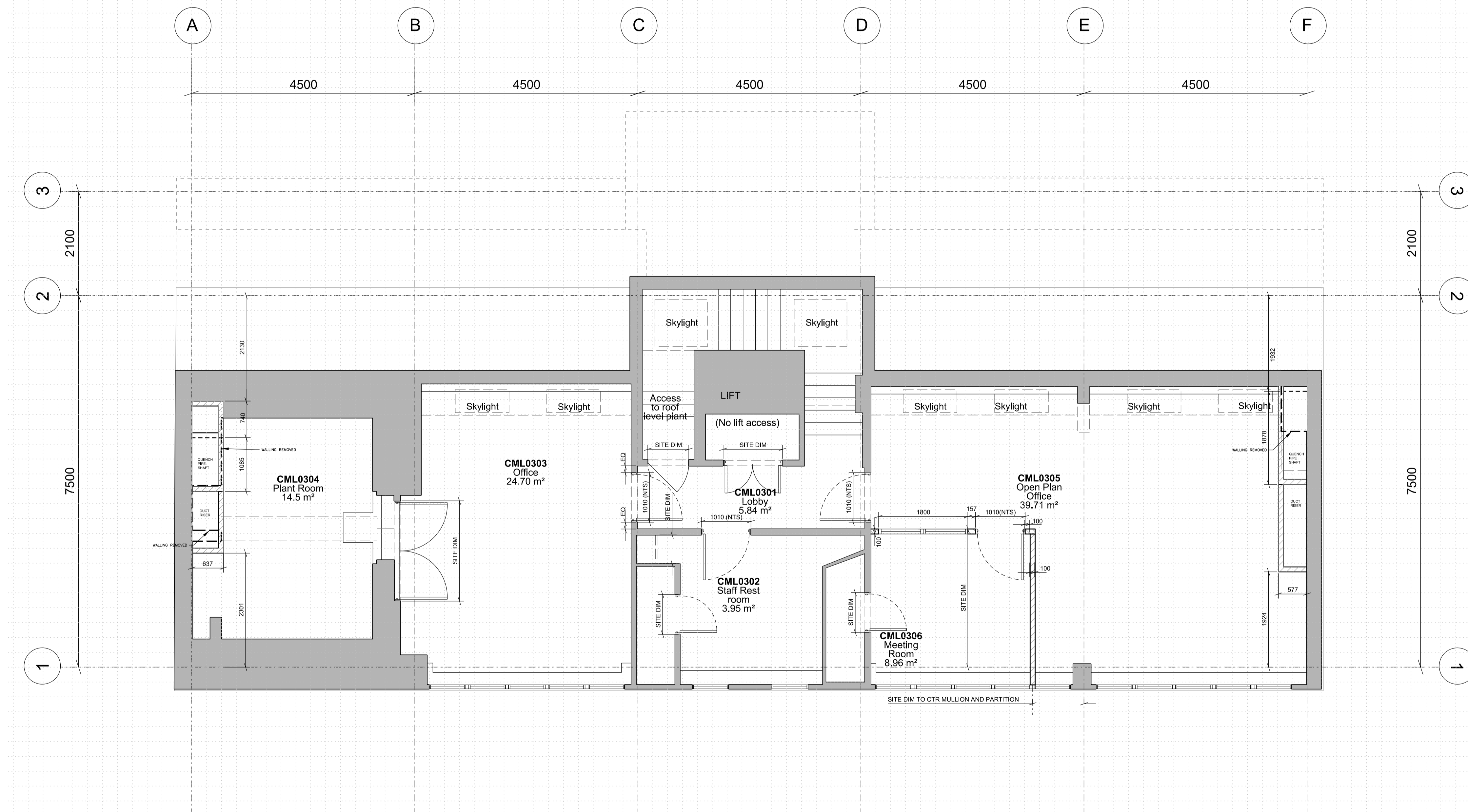
Drawn  
LD

Date  
16-10-07

Architect

**LLEWELYN  
DAVIES**

3rd Floor 1, 3rd Rathbone Place London E1 1YF UK  
T +44(0)20 7617 7900 | E london@lwdawes.com  
www.lwdawes.com



## NOTE:

Proposal does not include:

- Hub Room
- Waste Disposal Hold

Additionally:

- Chiller and substation (location to be discussed). Proximity to MRI units to be taken into account
- Proximity of Lift to MRI Units to be checked
- Location of Quench pipes for MRI Units to Arup drawing
- Areas are approximate and are not to be used for financial assessments. Figures and layouts are subject to further design development/ discussions with UCLHC
- Layouts are subject to a site survey