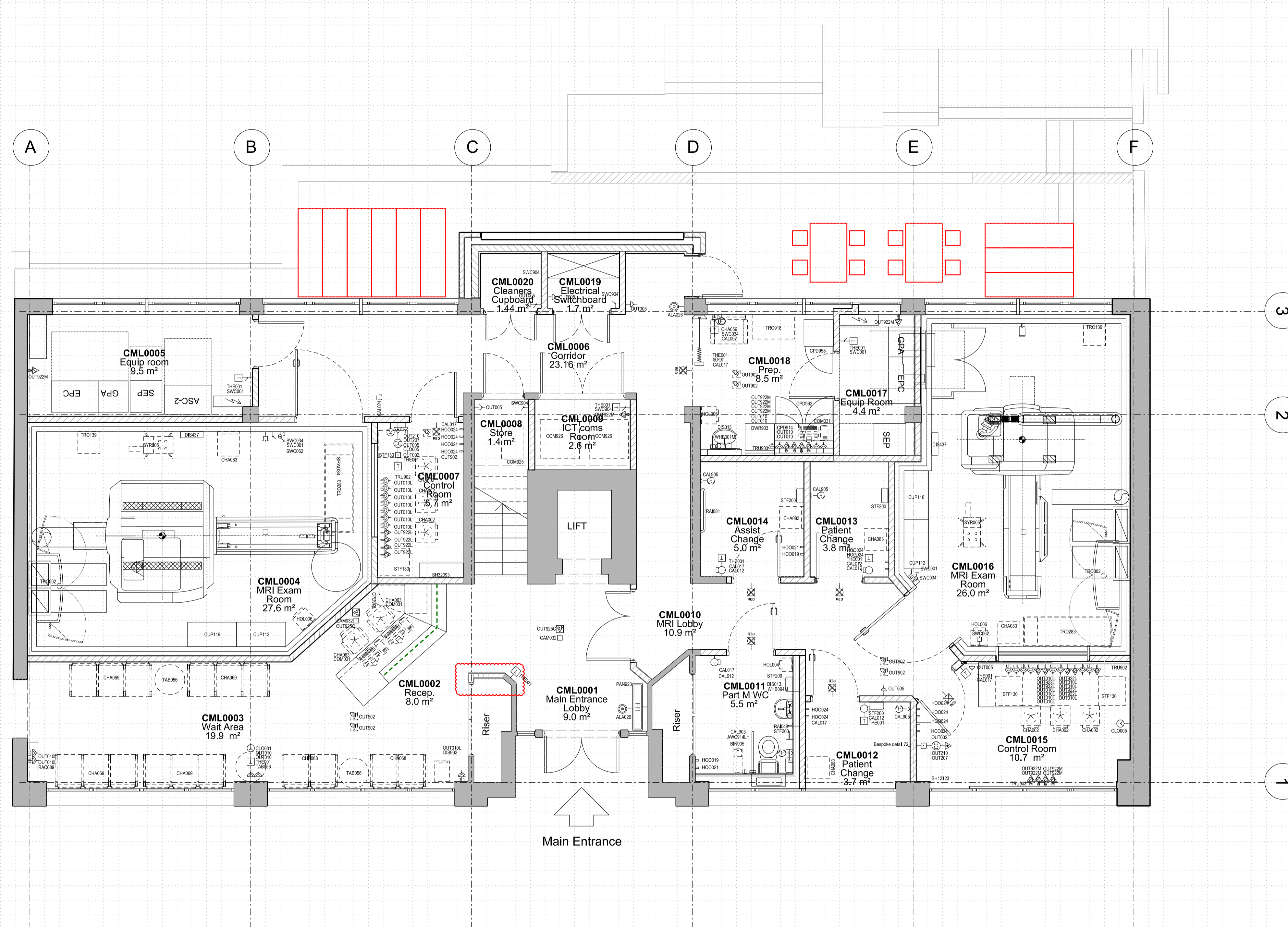


- All dimensions to be checked on site.
- Do not scale from this drawing
- Report any discrepancies and omissions to Llewelyn Davies Weeks Ltd
- All dimensions are shown in mm unless otherwise stated
- Refer to drawing issue sheet for purpose of issue
- If in doubt ask
- This drawing is Copyright © Llewelyn Davies Weeks Ltd

Notes

- Drawing CM\_P\_SKE03\_00 is superseded by 77-series drawings



No.	Description	Date	By
C3	Construction Issue	16.12.16	YC
C2	Construction Issue	21.11.16	YC
G1	Construction Issue	28.10.16	YC
P2	For sign off	21.10.16	YC
P1	For sign off	20.10.16	YC
No.	Description	Date	By

Structural Consultant Services Consultant

**AECOM**

**ARUP**

Project Manager

Cost Consultant



Project Title

The Roger Williams Building  
69-75 Chenies Mews, London  
WC1E 6HX

Client

University College London  
Hospitals Charity (UCLHC)

Drawing Title

Room Loaded drawing  
Level 00

Drawing number

77\_00

Revision

C3

Scale @ A3

1:100

Drawn

YC

Date

16-01-22

Architect

**LLEWELYN  
DAVIES**

3rd Floor 1, 5-6 Rathbone Place | London | W1T 1HJ  
T: +44(0)20 7617 7700 | E: london@lwdawes.com  
www.lwdawes.com

NOTE:

Proposal does not include:

- Nappy Change
- Waste Disposal Hold