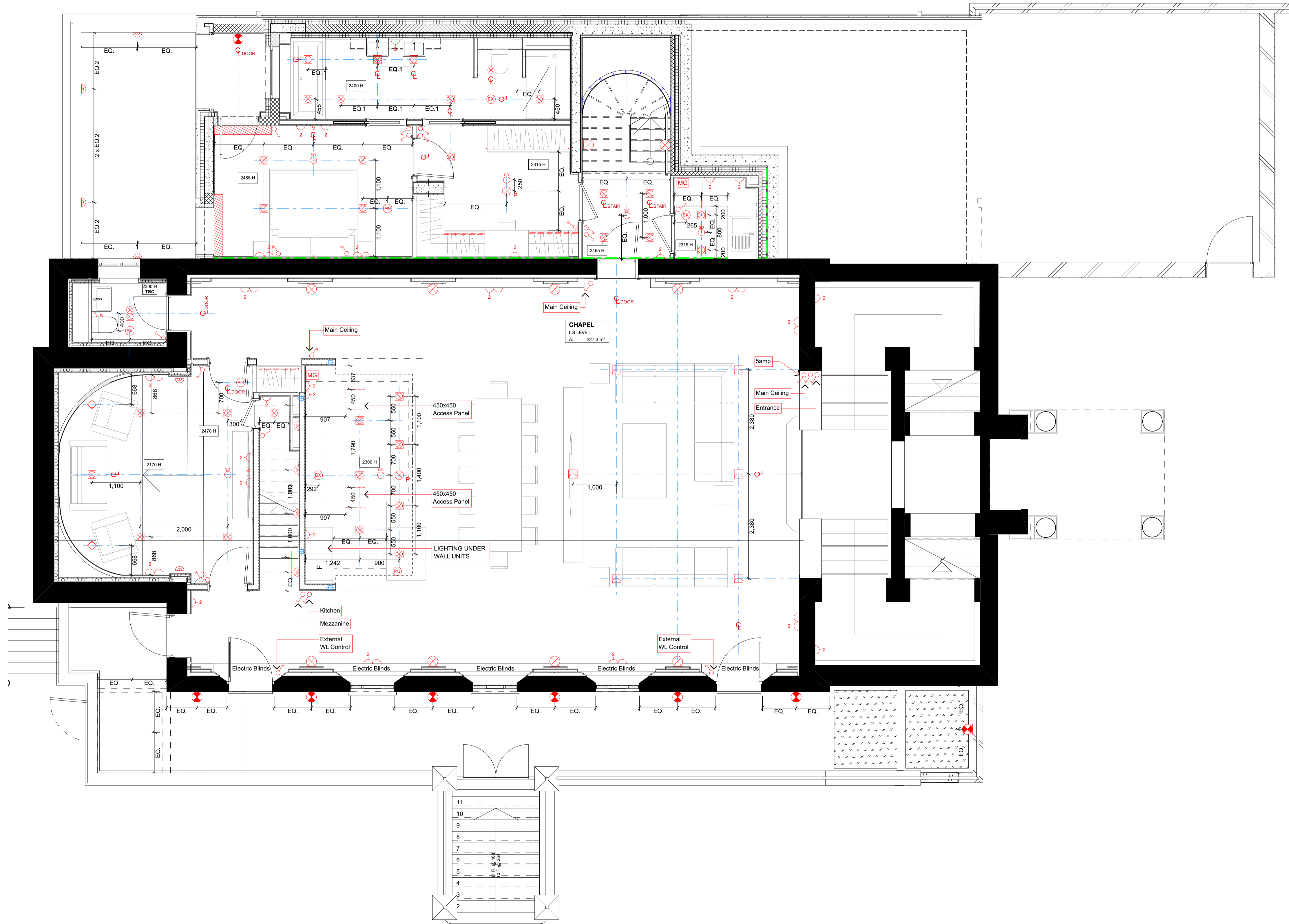
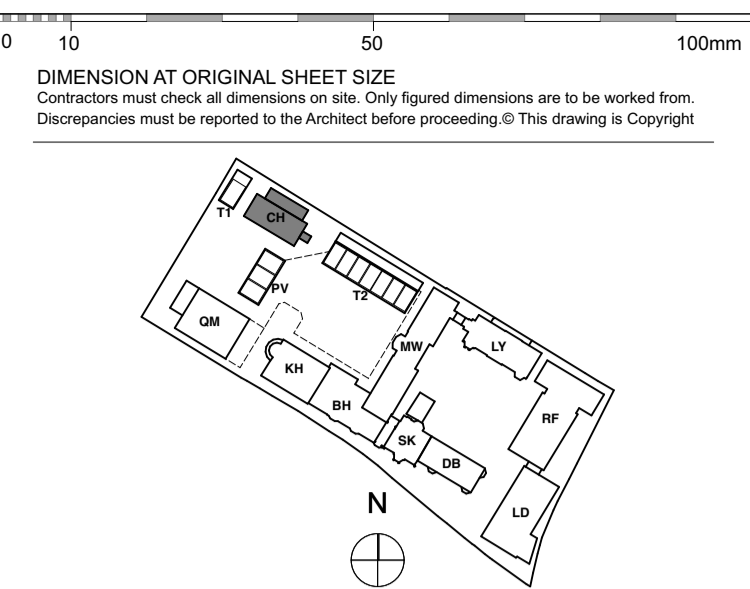


Refer to MKP drawings for Utility cupboard, kitchen and general electrical layouts.  
 Wiring for pendant lights in Living, Dining and Master Bedroom.  
 Wiring for speaker system in Living, Dining, kitchen and Master Bedroom, for future installation of speakers by customer.  
 Please provide wiring for electrical Blind System



**LEGEND**

**Lighting & Fire Alarm**

- Switch
- 2 way switch
- 3 way switch
- Switch dimmer
- Pendant light
- Modular Luminaire
- Linear Luminaire
- Single directional downlights
- Double directional downlights
- Wall light, internal
- Recessed low energy LED downlighter
- LED strip lighting to wardrobes & under wall units
- Wall light, external
- Recessed wall lights at floor level
- Wall light with sensor
- Double socket
- Samp switch sockets for lamp circuit
- Multi-gang switch for kitchen appliances
- Shaver socket
- Video entryphone and intercom
- TV media plate, Refer to M&E specification
- BT phone & data point
- Floor recessed outlet
- Smoke detector
- Heat detector
- Extractor
- Air supply in
- Linear slot diffuser for supply & extract air
- PIR presence detector
- Emergency Light
- Fire Detector
- Fire Detector-Sounder base & flashing beacon
- Manual Fire alarm call point
- Thermostat
- PopUp Socket and USB Port
- Recessed uplighter

**Ceiling Info.**

- Cornice or Ceiling ornament
- Curtain Recess

**FOR CONSTRUCTION**

| REVISION                   | DRN    | CHKD | DATE       |
|----------------------------|--------|------|------------|
| C1 Issued for Construction | NVR/KC | TW   | 23/12/2016 |



CLIENT  
 MOUNT ANVIL LTD

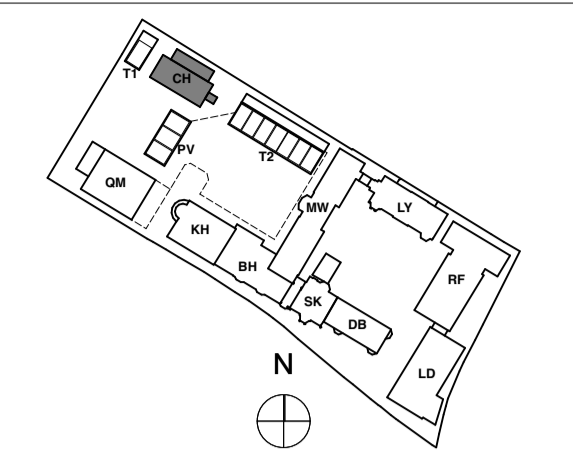
PROJECT  
 KIDDERPORE AVENUE

DRAWING  
 Chapel  
 Level LG RCP

SCALE 1:50 @ A1 DATE December 2016

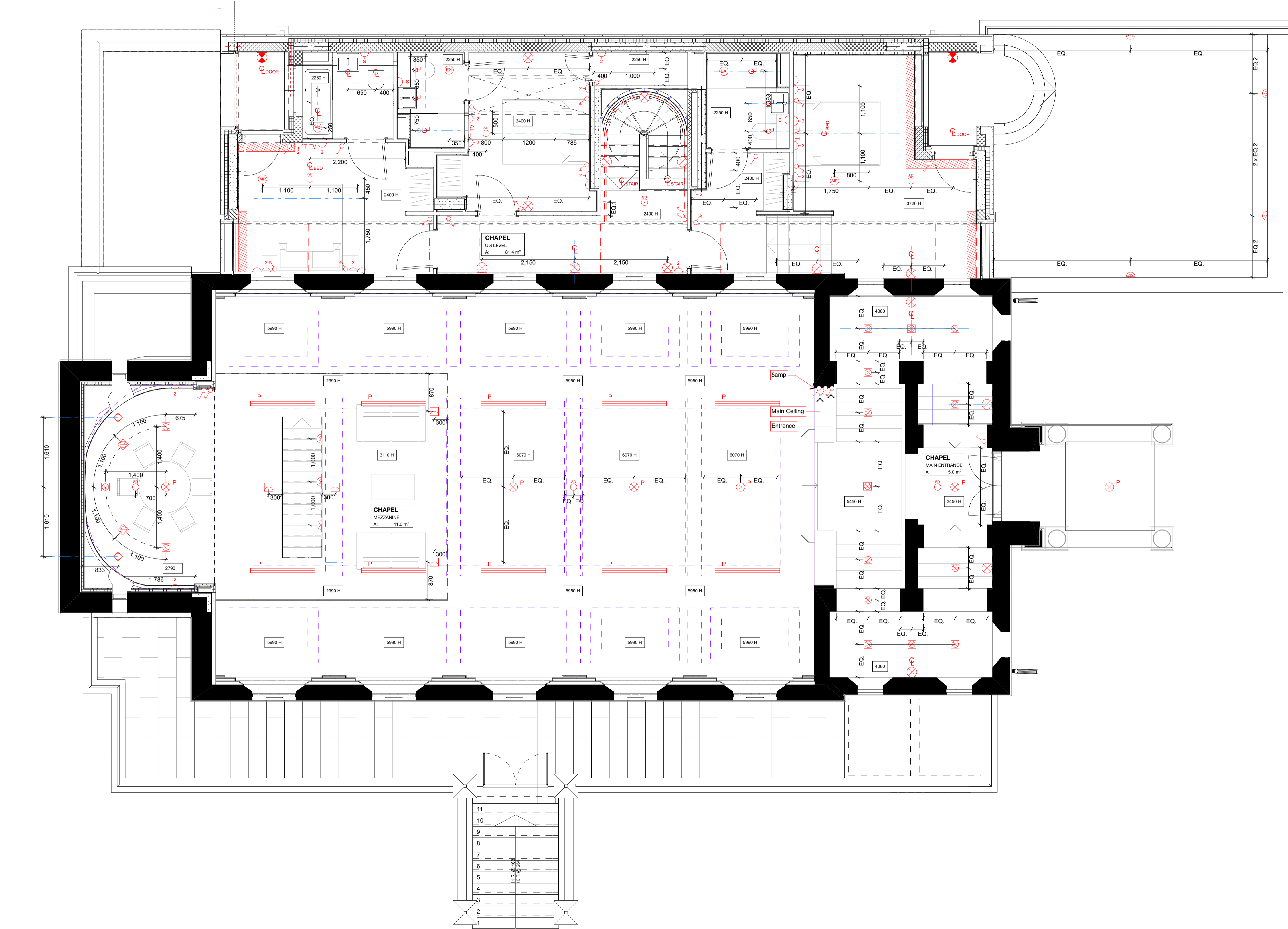
DRAWING No. 15 230 DRAWN BY NV  
 9000-DRG-23CH- LG030 REV C1

A & Q PARTNERSHIP (LONDON) LTD  
 THE LUX BUILDING, 2-4 HOXTON SQUARE, LONDON N1 6 NU  
 Tel: 020 7613 2244 Fax: 020 7613 2642 Email: london@aqp.co.uk  
 ARCHITECTURE DESIGN MASTERPLANNING INTERIORS



KEY PLAN

**NOTE**  
Refer to MKP drawings for Utility cupboard, kitchen and general electrical layouts.  
Wiring for pendant lights in Living, Dining and Master Bedroom.  
Wiring for speaker system in Living, Dining, kitchen and Master Bedroom, for future installation of speakers by customer.  
Please provide wiring for electrical Blind System



**LEGEND**

**Lighting & Fire Alarm**

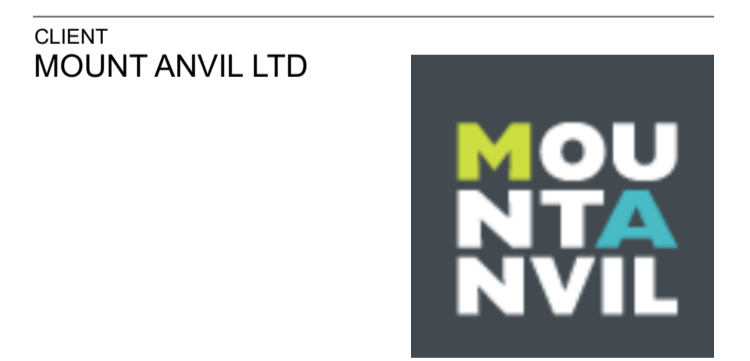
- Switch
- 2 way switch
- 3 way switch
- Switch dimmer
- Pendant light
- Modular Luminaire
- Linear Luminaire
- Single directional downlights
- Double directional downlights
- Wall light, internal
- Recessed low energy LED downlighter
- LED strip lighting to wardrobes & under wall units
- Wall light, external
- Recessed wall lights at floor level
- Wall light with sensor
- Double socket
- Samp switch sockets for lamp circuit
- Multi-gang switch for kitchen appliances
- Shaver socket
- Video entryphone and intercom
- TV media plate. Refer to M&E specification
- BT phone & data point
- Floor recessed outlet
- Smoke detector
- Heat detector
- Extractor
- Air supply in
- Linear slot diffuser for supply & extract air
- PIR presence detector
- Emergency Light
- Fire Detector
- Fire Detector/Sounder base & flashing beacon
- Manual Fire alarm call point
- Thermostat
- PopUp Socket and USB Port
- Recessed uplighter

**Ceiling Info.**

- Cornice or Ceiling ornament
- Curtain Recess

**FOR CONSTRUCTION**

| REVISION                   | DRN    | CHKD | DATE       |
|----------------------------|--------|------|------------|
| C1 Issued for Construction | NVR/KC | TW   | 23/12/2016 |



CLIENT  
MOUNT ANVIL LTD

PROJECT  
KIDDERPORE AVENUE

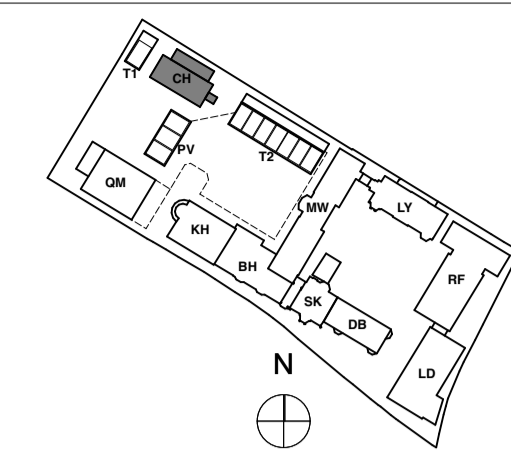
DRAWING  
Chapel  
Level UG RCP

SCALE 1:50 @ A1 DATE December 2016

DRAWING No. 15 230 DRAWN BY NV  
9000-DRG-23CH- UG030 REV C1

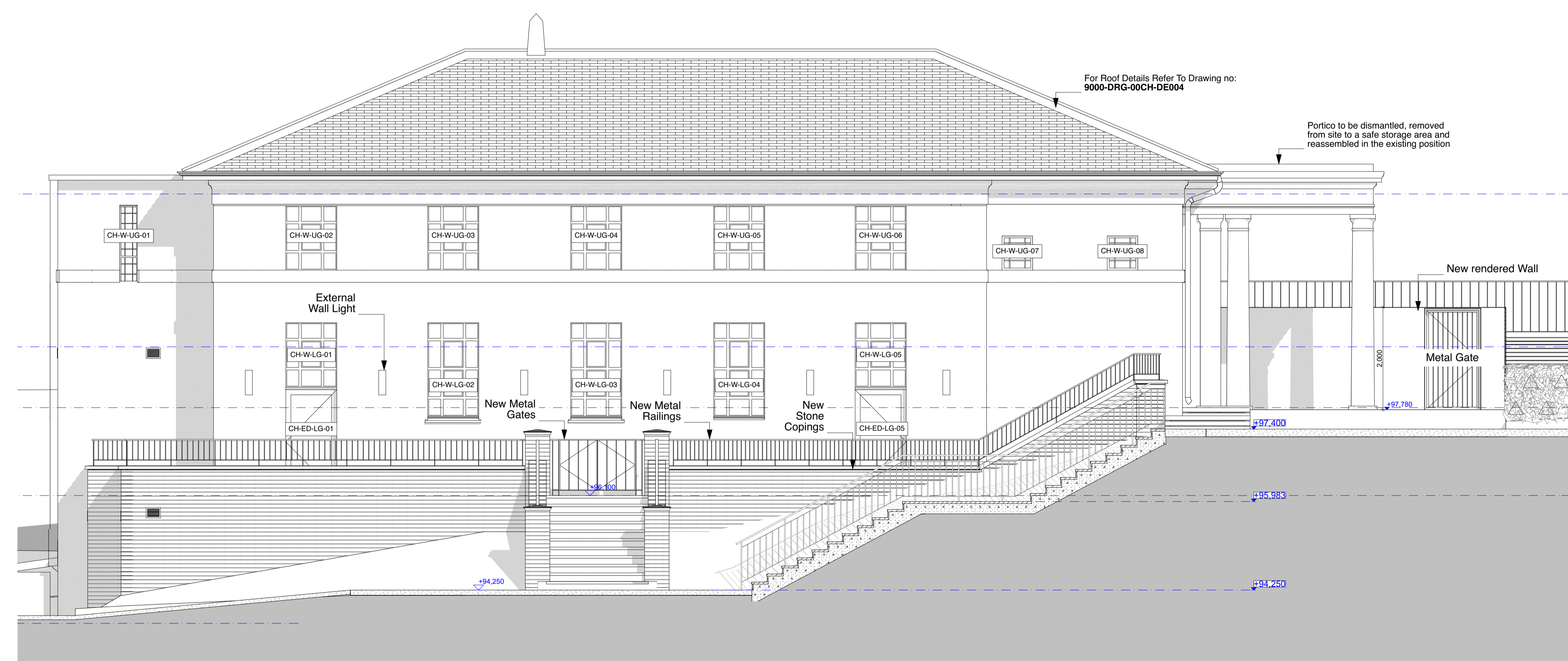
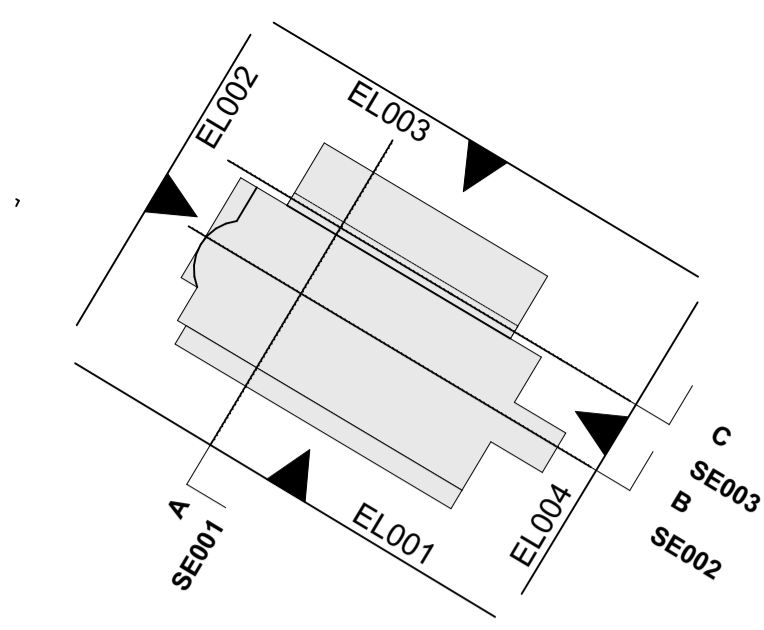
**A & Q PARTNERSHIP (LONDON) LTD**  
THE LUX BUILDING, 2-4 HOXTON SQUARE, LONDON N1 6 NU  
Tel: 020 7613 2244 Fax: 020 7613 2642 Email: london@aqp.co.uk  
ARCHITECTURE DESIGN MASTERPLANNING INTERIORS

DIMENSION AT ORIGINAL SHEET SIZE  
Contractors must check all dimensions on site. Only figured dimensions are to be worked from. Discrepancies must be reported to the Architect before proceeding. © This drawing is Copyright



KEY PLAN

NOTE:  
ALL DIMENSIONS WITH \* (STAR) ARE ANTICIPATED AND SHOULD BE CHECKED AND CONFIRMED ON SITE PRIOR TO CONSTRUCTION



**FOR CONSTRUCTION**

| REVISION                     | DRN   | CHKD | DATE       |
|------------------------------|-------|------|------------|
| C1 Issued for Construction   | NV/KC | TW   | 23/12/2016 |
| C2 External Wall Light Added | KC    | TW   | 20/01/2017 |



CLIENT  
MOUNT ANVIL LTD

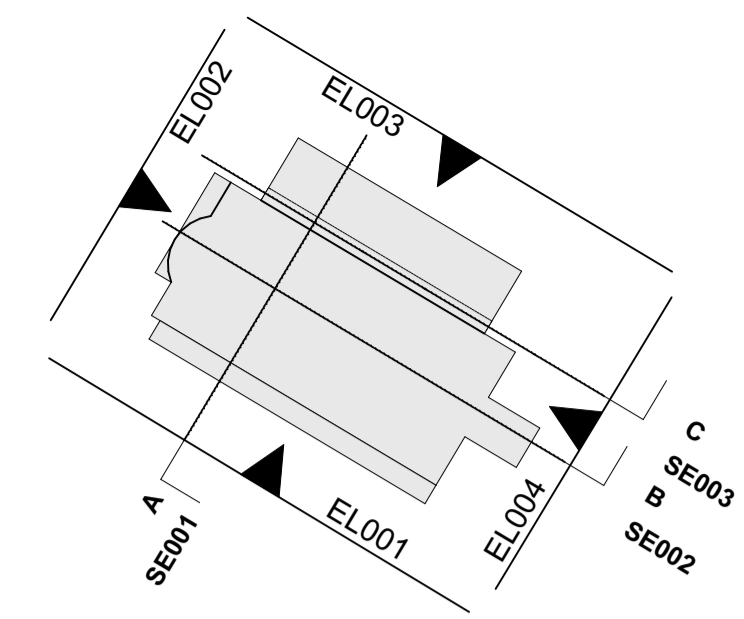
PROJECT  
KIDDERPORE AVENUE

DRAWING  
Chapel  
South Elevation as Proposed

SCALE 1:50 @ A1 DATE January 2017

DRAWING No. 15 230 DRAWN BY NV  
9000-DRG-02CH-EL001 REV C2

A & Q PARTNERSHIP (LONDON) LTD  
THE LUX BUILDING, 2-4 HOXTON SQUARE, LONDON N1 6 NU  
Tel: 020 7613 2244 Fax: 020 7613 2642 Email: london@aqp.co.uk  
ARCHITECTURE DESIGN MASTERPLANNING INTERIORS



KEY PLAN

NOTE:  
ALL DIMENSIONS WITH \* (STAR) ARE ANTICIPATED AND SHOULD BE CHECKED AND CONFIRMED ON SITE PRIOR TO CONSTRUCTION

FOR CONSTRUCTION

| REVISION                     | DRN   | CHKD | DATE       |
|------------------------------|-------|------|------------|
| C1 Issued for Construction   | NW/KC | TW   | 23/12/2016 |
| C2 External Wall Light Added | K/C   | TW   | 20/01/2017 |



CLIENT  
MOUNT ANVIL LTD



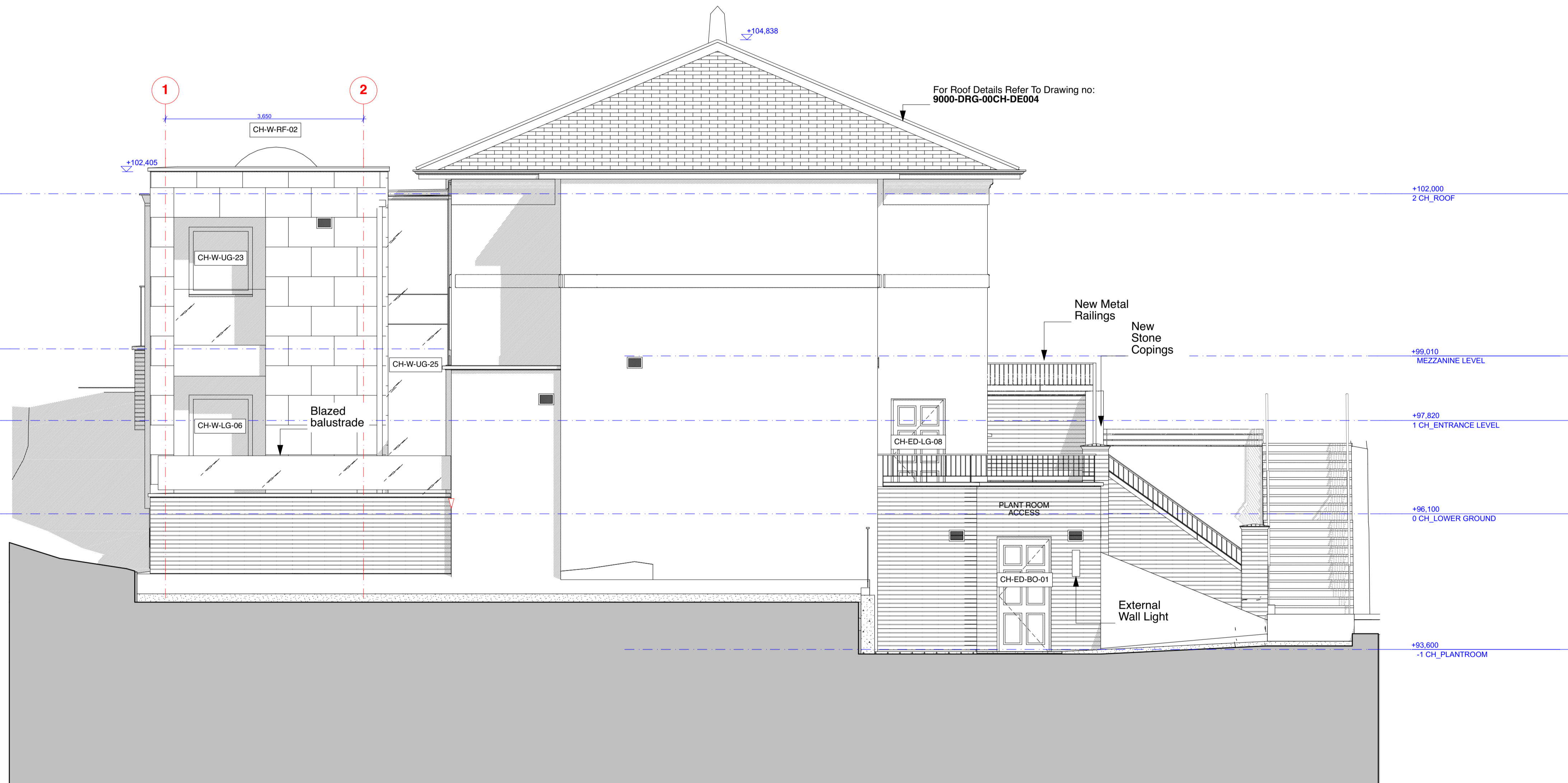
PROJECT  
KIDDERPORE AVENUE

DRAWING  
Chapel  
West Elevation as Proposed

SCALE 1:50 @ A1 DATE  
January 2017

DRAWING No. 15 230 DRAWN BY NV  
9000-DRG-02CH-EL002 REV C2

A & Q PARTNERSHIP (LONDON) LTD  
THE LUX BUILDING, 2-4 HOXTON SQUARE, LONDON N1 6 NU  
Tel: 020 7613 2244 Fax: 020 7613 2642 Email: london@aqp.co.uk  
ARCHITECTURE DESIGN MASTERPLANNING INTERIORS



Date

---

Name

---

Client

---

Project Name

---

Quote#

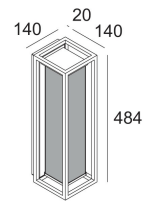
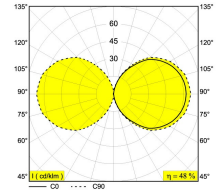
---

Type/Quantity

---

**MONTUR L PC LED**  
**232 318 83**

[Weblink](#)



Available colors: ALU GREY (232 318 83 A)  
 BLACK (232 318 83 B)

INCL.PC SBL  
 INCL.LED CLUSTER 14,7W / CRI>80 / 3000K / 1960lm  
 INCL.LED POWER SUPPLY 700mA-DC

LED Technics: Light source: 1960 lm // 14 W // 133 lm/W  
 Luminaire: 950 lm // 17 W // 56 lm/W

220-240V / 0|50-60Hz

Class: I

Weight: 2.6 KG  
 Protection level: IP54  
 Minimum distance: n.a.

For detailed installation instructions, please consult the manual. [232 318 XX HAND.pdf](#)