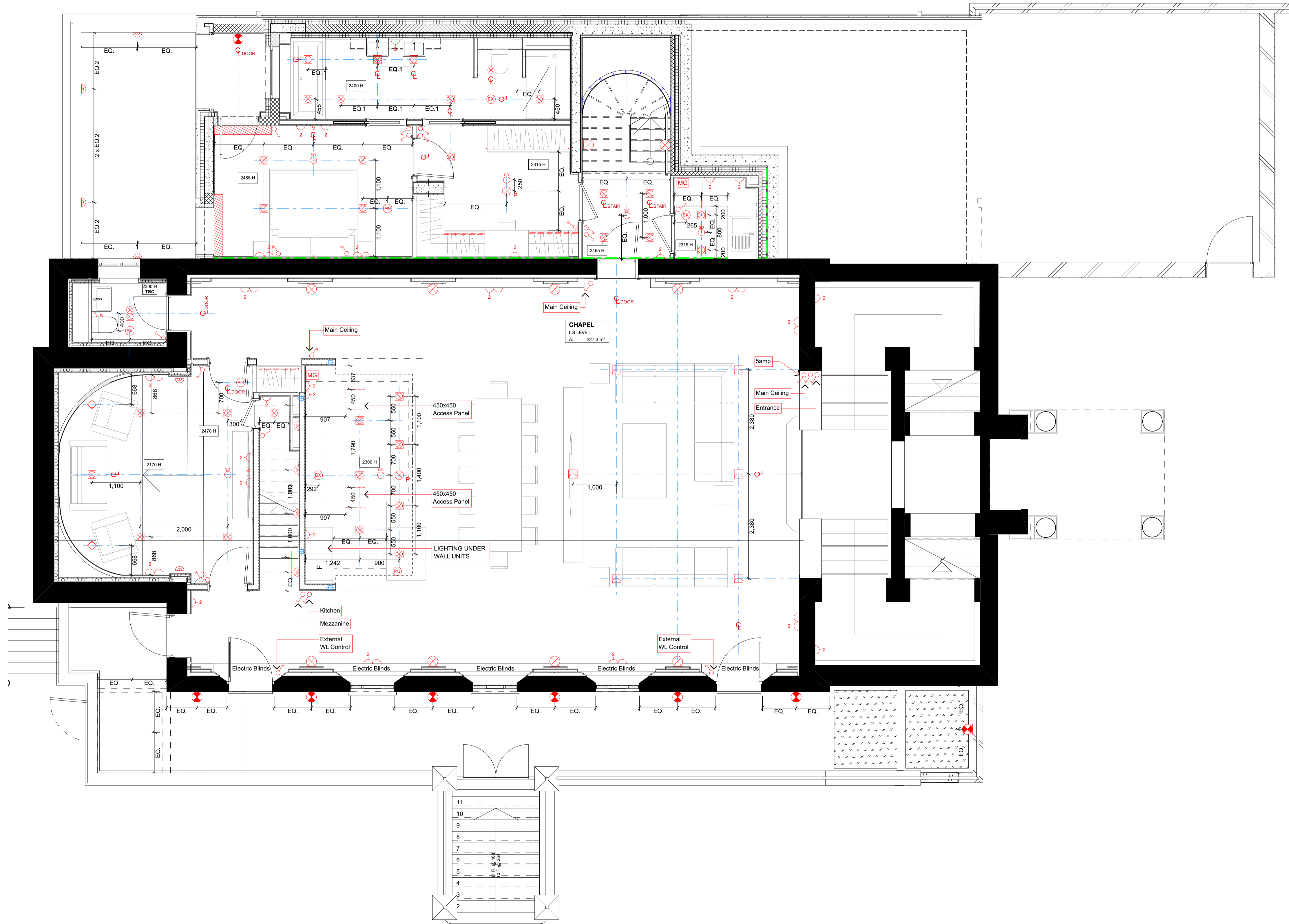
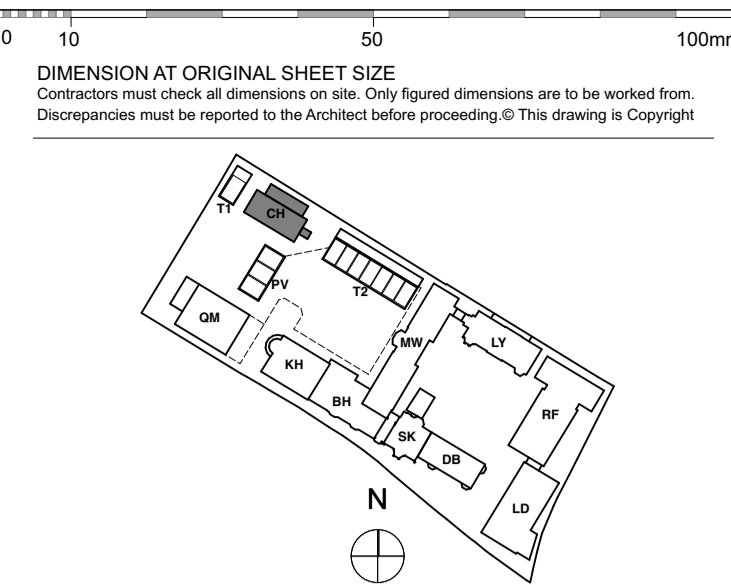


Refer to MKP drawings for Utility cupboard, kitchen and general electrical layouts.
 Wiring for pendant lights in Living, Dining and Master Bedroom.
 Wiring for speaker system in Living, Dining, kitchen and Master Bedroom, for future installation of speakers by customer.
 Please provide wiring for electrical Blind System



LEGEND

Lighting & Fire Alarm

- Switch
- 2 way switch
- 3 way switch
- Switch dimmer
- Pendant light
- Modular Luminaire
- Linear Luminaire
- Single directional downlights
- Double directional downlights
- Wall light, internal
- Recessed low energy LED downlighter
- LED strip lighting to wardrobes & under wall units
- Wall light, external
- Recessed wall lights at floor level
- Wall light with sensor
- Double socket
- Samp switch sockets for lamp circuit
- Multi-gang switch for kitchen appliances
- Shaver socket
- Video entryphone and intercom
- TV media plate. Refer to M&E specification
- BT phone & data point
- Floor recessed outlet
- Smoke detector
- Heat detector
- Extractor
- Air supply in
- Linear slot diffuser for supply & extract air
- PIR presence detector
- Emergency Light
- Fire Detector
- Fire Detector-Sounder base & flashing beacon
- Manual Fire alarm call point
- Thermostat
- PopUp Socket and USB Port
- Recessed uplighter

Ceiling Info.

- Cornice or Ceiling ornament
- Curtain Recess

FOR CONSTRUCTION

REVISION	DRN	CHKD	DATE
C1 Issued for Construction	NVR/KC	TW	23/12/2016



CLIENT
 MOUNT ANVIL LTD

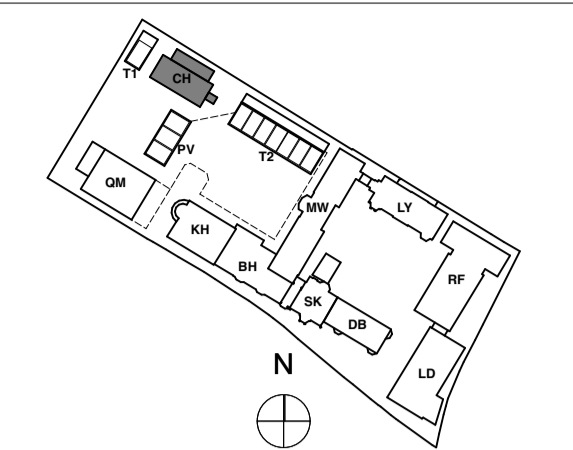
PROJECT
 KIDDERPORE AVENUE

DRAWING
 Chapel
 Level LG RCP

SCALE 1:50 @ A1 DATE December 2016

DRAWING No. 15 230 DRAWN BY NV
 9000-DRG-23CH- LG030 REV C1

A & Q PARTNERSHIP (LONDON) LTD
 THE LUX BUILDING, 2-4 HOXTON SQUARE, LONDON N1 6 NU
 Tel: 020 7613 2244 Fax: 020 7613 2642 Email: london@aqp.co.uk
 ARCHITECTURE DESIGN MASTERPLANNING INTERIORS



KEY PLAN

NOTE
Refer to MKP drawings for Utility cupboard, kitchen and general electrical layouts.
Wiring for pendant lights in Living, Dining and Master Bedroom.
Wiring for speaker system in Living, Dining, kitchen and Master Bedroom, for future installation of speakers by customer.
Please provide wiring for electrical Blind System

LEGEND

Lighting & Fire Alarm

- Switch
- 2 way switch
- 3 way switch
- Switch dimmer
- Pendant light
- Modular Luminaire
- Linear Luminaire
- Single directional downlights
- Double directional downlights
- Wall light, internal
- Recessed low energy LED downlighter
- LED strip lighting to wardrobes & under wall units
- Wall light, external
- Recessed wall lights at floor level
- Wall light with sensor
- Double socket
- Samp switch sockets for lamp circuit
- Multi-gang switch for kitchen appliances
- Shaver socket
- Video entryphone and intercom
- TV media plate. Refer to M&E specification
- BT phone & data point
- Floor recessed outlet
- Smoke detector
- Heat detector
- Extractor
- Air supply in
- Linear slot diffuser for supply & extract air

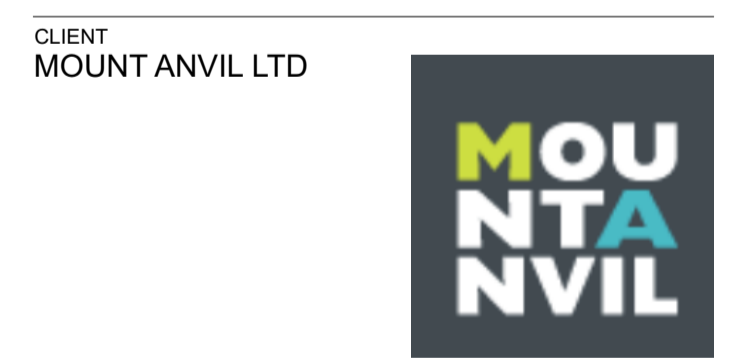
- PIR presence detector
- Emergency Light
- Fire Detector
- Fire Detector/Sounder base & flashing beacon
- Manual Fire alarm call point
- Thermostat
- PopUp Socket and USB Port
- Recessed uplighter

Ceiling Info.

- Cornice or Ceiling ornament
- Curtain Recess

FOR CONSTRUCTION

REVISION	DRN	CHKD	DATE
C1 Issued for Construction	NV/RG	TW	23/12/2016



CLIENT
MOUNT ANVIL LTD

PROJECT
KIDDERPORE AVENUE

DRAWING
Chapel
Level UG RCP

SCALE 1:50 @ A1 DATE December 2016

DRAWING No. 15 230 DRAWN BY NV
9000-DRG-23CH- UG030 REV C1

A & Q PARTNERSHIP (LONDON) LTD
THE LUX BUILDING, 2-4 HOXTON SQUARE, LONDON N1 6 NU
Tel: 020 7613 2244 Fax: 020 7613 2642 Email: london@aqp.co.uk
ARCHITECTURE DESIGN MASTERPLANNING INTERIORS

