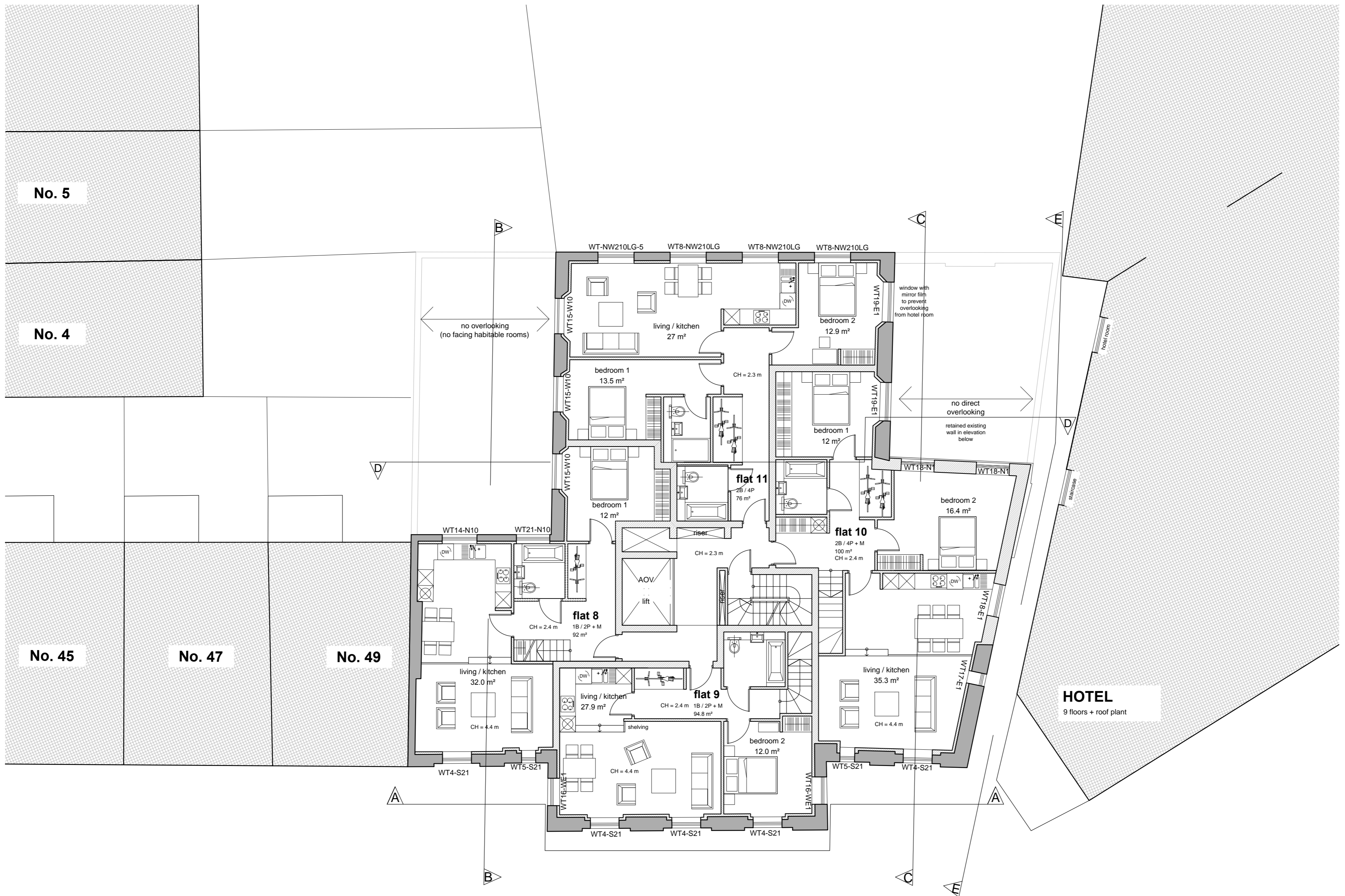


USE FIGURED DIMENSIONS ONLY
DO NOT SCALE FROM THIS DRAWING.

ALL DIMENSIONS MUST BE CHECKED ON SITE ANY
INCONSISTENCIES MUST BE REPORTED BACK TO THE ARCHITECT.

THIS DRAWING AND ANY DESIGNS INDICATED THEREON ARE THE
COPYRIGHT OF BROOKS / MURRAY ARCHITECTS.
ALL RIGHTS ARE RESERVED.
NO PART OF THIS WORK MAY BE PRODUCED WITHOUT PRIOR
PERMISSION IN WRITING FROM BROOKS / MURRAY ARCHITECTS.

PLANNING STAGE DRAWINGS SHOULD NOT BE USED FOR
CONSTRUCTION.



3	SS 23.01.2017
2	SS 12.12.2016
1	SS 24.11.2016
REV.	AMENDMENT
	BY: DATE

BROOKS / MURRAY
ARCHITECTS
8-10 NEW NORTH PLACE
LONDON EC2A 4JA
TEL 020 7739 9955
FAX 020 7739 9944
architects@brooksmurray.com

CLIENT: Simon Firth	
JOB: 51 Calthorpe Street Camden London WC1X 0HH	
DRAWING TITLE: Proposed First Floor Plan	
SCALE: 1:100 @ A2	
DATE: Nov 2016	
STATUS: Planning	DRAWN BY: SS
DRAWING NUMBER: 939 - 111	ISSUED BY: SS
REV: 3	

