

- ROOF PACKAGE LEGEND**
- GRANITE SETTS 100MM x 200MM SEE SPECIFICATION Q25.1202
 - EXTENSIVE GREEN ROOF ON COMPOSITE DECK WITH INSULATION, SEE SPECIFICATION Q37.1200
 - EXTENSIVE GREEN ROOF ON COMPOSITE DECK WITHOUT INSULATION, SEE SPECIFICATION Q37.1200
 - GRANITE SETTS 200MM x 300MM SEE SPECIFICATION Q25.1202
 - MIN 40MM THICK GRANITE STONE CAPPING
 - SLOTTED TIMBER SEAT ON CONCRETE CLAD UPSTANDS SEE SPECIFICATION H42.1205
 - TIMBER SEATING ON STEEL FRAME
 - PEBBLES (GREY STONE) MIN 50MM DIM WASHED & ROUNDED SEE SPECIFICATION J31.2109
 - INTENSIVE GREEN ROOF PLANTING SEE SPECIFICATION Q37.1200
 - ROOF LIGHT SEE SPECIFICATION Z25.2115
 - SINGLE PIECE TRIANGULAR GRANITE SLAB TO MAKE CORNER SEE SPECIFICATION Q25.1202
 - LIGHT GREY FIBREGLASS FLOOR GRATING INFILLED WITH GRAVEL TO ALLOW DRAINAGE
 - 600X600 CONCRETE PAVING SLABS SEE SPECIFICATION J31.2107
 - UNINSULATED METAL DECK ROOFING SYSTEM ON STEEL STRUCTURE
 - GALVANIZED METAL CANOPY TO PROTECT LIFT DOORS
 - BARK MULCH
 - SLOT DRAIN
 - 1800MM HIGH STRUCTURAL GLASS
 - STAINLESS STEEL OR ANODIZED ALUMINIUM POST TO GLAZING SCREEN
 - RW OUTLET SEE SPECIFICATION Q10.2102
 - DIRECTIONS OF FALLS
 - GLASS ACCESS GATE
 - FALL ARREST SYSTEM
 - LOUVRES BETWEEN PV PANELS TO BE ACOUSTIC LOUVRES OR TO HAVE ATTENUATION BACK BOXES, AS REQUIRED IN THE ACOUSTIC REPORT. ALL LOUVRES (REGARDLESS OF ACOUSTIC RATING) ARE TO LOOK THE SAME EXTERNALLY
 - KEYLOCK ACCESS THROUGH PV PANEL, HINGED OPENABLE (REFER TO SECURITY DRAWINGS SEQUENCE 171000)
 - INDICATIVE POSITION OF POWER POINTS FOR LANDSCAPING MAINTENANCE
 - INDICATIVE POSITION OF WATER POINTS FOR LANDSCAPING MAINTENANCE
 - IRRIGATION SYSTEM TO BE DEVELOPED IN LINE WITH REVISED LANDSCAPING BRIEF FROM UCLH ONCE INSTRUCTED BY UCLH, TO BE REVIEW AND ACCEPTED BY INFECTION CONTROL

Rev. D Colour amended for clarity

Rev. D Finishes added to legend

Rev. D RW outlet added

Rev. D RW outlet added

Rev. D Roof build-up updated, green roof added

Rev. D RW outlet added

Rev. D Note amended.

Rev. D Colour amended for clarity

Rev. D Colour amended for clarity

Rev. D Roof build-up updated

Rev. D RW outlet added

Rev. D Items added to legend

Rev. D Power and Water supplies added

INVERTED ROOF SYSTEM WITH PAVING TO TOP OF CORES. REFER TO SPEC J31.1203

AUTOMATED SMOKE/AIR INTAKE VENTS TO THE TOP OF EACH CORE

ROOF TO LIFT SHAFT

INVERTED ROOF SYSTEM WITH PAVING TO TOP OF CORES. REFER TO SPEC J31.1203

AUTOMATED SMOKE/AIR INTAKE VENTS TO THE TOP OF EACH CORE

Rev. D RW outlet added

Rev. D Acoustic louvre key & key lock access added

Rev. D Access ladder location changed

Rev. D Green roof added

Rev. D Louvre panel added

Rev. D Louvre panel added

Rev. D Louvre panel added

Rev. D Fall restraint system, RW outlets & falls updated.

Rev. D Fall restraint system, RW outlets & falls updated.

Rev. D Fall restraint system, RW outlets & falls updated.

Rev. D Acoustic louvre key & key lock access added

Rev. D 'Fall arrest' changed to 'Fall restraint'.

Rev. D Roof build-up updated

Rev. D RW outlet added

R/F4 Sixth Floor Plan
143143 1:200

NOTES:

Rev	DATE	REVISION HISTORY	Dsg	Dw	Clk	App
D	11.11.16	100% Stage E issue.	STW	BB	RM	KB
C	01/08/16	Updated to Byuk Comments and Issued for 90% Review	STW	BB	MK	KB
B	18/07/16	Issued For Tender	STW	STW	BYUK	BYUK
A	06/07/16	Issued For Facade and Roof Tender	STW	STW	BYUK	BYUK

ALL REVISIONS

Rev	DATE	REVISION HISTORY	Dsg	Dw	Clk	App
D	11.11.16	100% Stage E issue.	STW	BB	RM	KB
C	01/08/16	Updated to Byuk Comments and Issued for 90% Review	STW	BB	MK	KB
B	18/07/16	Issued For Tender	STW	STW	BYUK	BYUK
A	06/07/16	Issued For Facade and Roof Tender	STW	STW	BYUK	BYUK



BOUYGUES
Head Office:
Elizabeth House,
39 York Road,
London, SE1 7NQ,
Tel: 020 7401 0020
Fax: 020 7401 0030
www.bouygues-uk.com

University College London Hospitals **NHS**
NHS Foundation Trust

Name	Signature	Date
Designed by	STW	2016/11/11
Drawn by	BB	2016/11/11
Checked	RM	2016/11/11
Approved	KB	2016/11/11

ORIGINATOR
Scott Tallon Walker Architects

NG Bailey CampbellReith

VARIAN Particle Therapy

SCALE: As indicated @ A1

FIRST ISSUE DATE: 2016/07/06

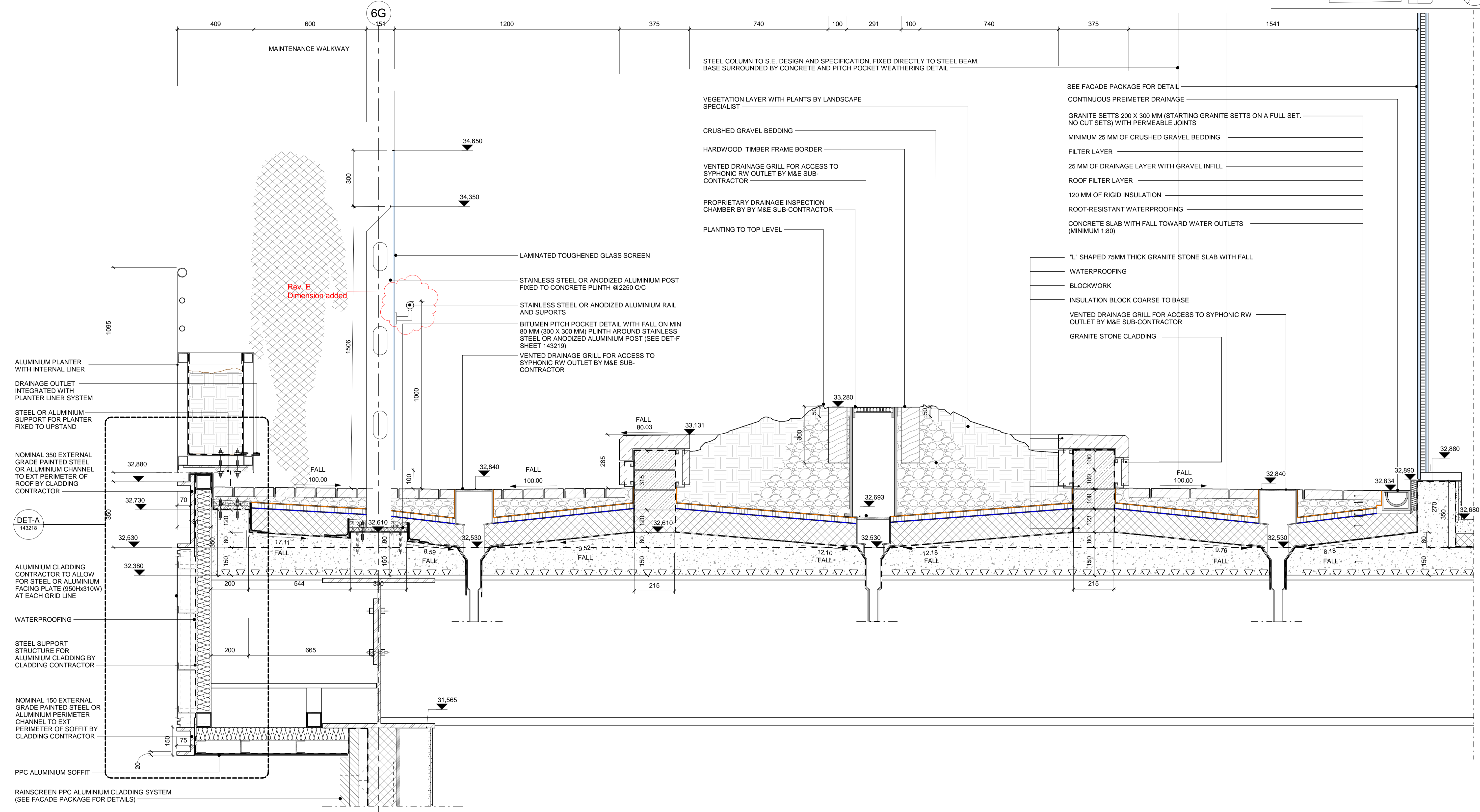
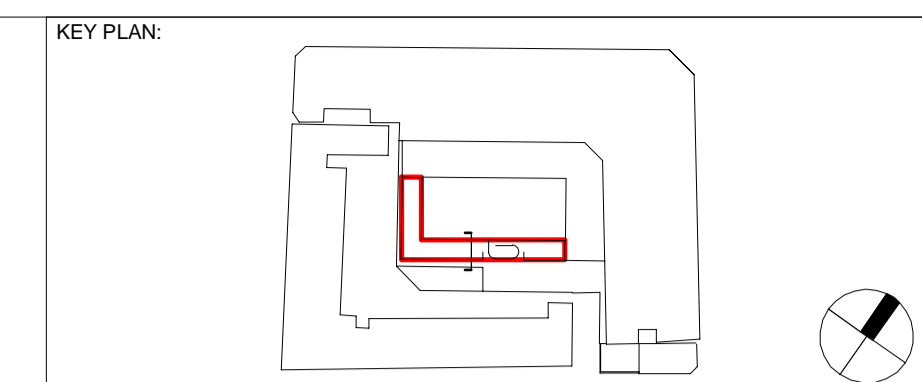
PROPOSED STATUS: For Procurement

BIM FILE NAME: P4PBT-STW-AFA-SL-M3-A31-100060

DRAWING TITLE

UCLH Phase 4 & PBT
Roof Package Sixth Floor Level

PROJECT	ISSUER	AREA	LEVEL	TYPE	TRADE	SEQUENCE	REV
P4PBT	STW	AFA	06	SOW	A31	143143	D



SEC-AA Roof-First Floor
143210 1:10

NOTES:

Rev	DATE	REVISION HISTORY	Dsg	Drw	Chk	App
E	11.11.16	100% Stage E Issue	STW	BB	RM	KB
D	01/08/16	Updated to Byuk Comments and Issued for 90% Review	STW	BB	MK	KB
C	18/07/16	Issued For Tender	STW	STW	BYJK	BYJK
B	06/07/16	Issued For Facade and Roof Tender	STW	STW	BYJK	BYJK
A	12/04/16	Issued for 50% Review	STW	STW	BYJK	BYJK

ALL REVISIONS

Rev	DATE	REVISION HISTORY	Dsg	Drw	Chk	App
E	11.11.16	100% Stage E Issue	STW	BB	RM	KB
D	01/08/16	Updated to Byuk Comments and Issued for 90% Review	STW	BB	MK	KB
C	18/07/16	Issued For Tender	STW	STW	BYJK	BYJK
B	06/07/16	Issued For Facade and Roof Tender	STW	STW	BYJK	BYJK
A	12/04/16	Issued for 50% Review	STW	STW	BYJK	BYJK



BOUYGUES
Head Office:
Elizabeth House,
39 York Road,
London, SE1 7NQ,
Tel: 020 7401 0020
Fax: 020 7401 0030
www.bouygues-uk.com

University College London Hospitals NHS
NHS Foundation Trust

Name	Signature	Date
Designed by	STW	11.11.16
Drawn by	BB	11.11.16
Checked	RM	11.11.16
Approved	KB	11.11.16

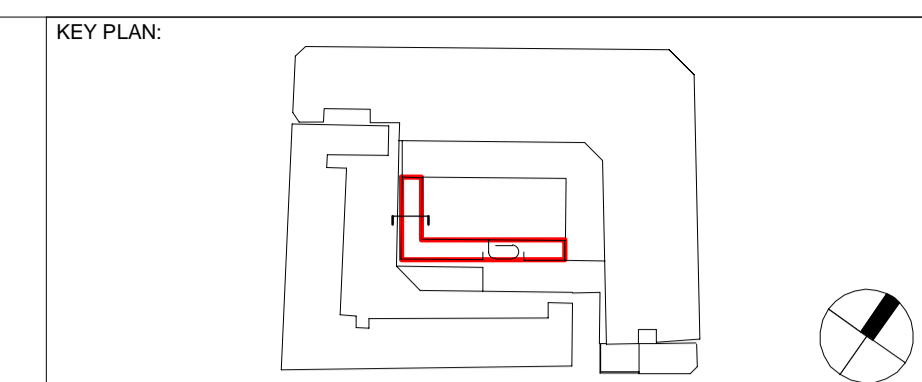
ORIGINATOR
Scott Tallon Walker Architects
NG Bailey CampbellReith
VARIAN medical systems | Particle Therapy

SCALE: 1:10 @ A1
BIM FILE NAME: P4PBT-STW-AFA-SL-M3-A31-100060
FIRST ISSUE DATE: 2016/04/12
PROPOSED STATUS: For Procurement

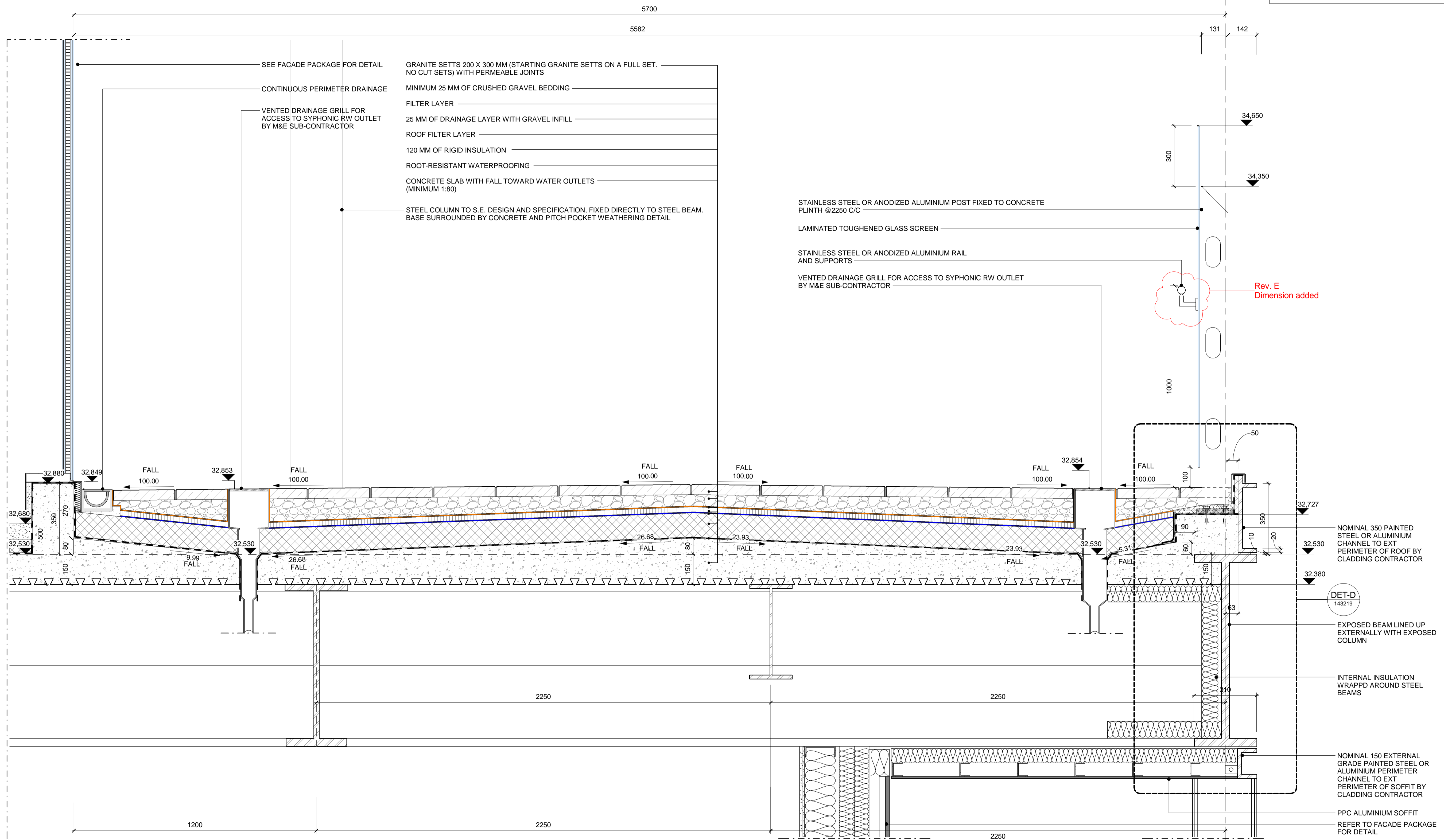
DRAWING TITLE

UCLH Phase 4 & PBT
Roof Package Section AA Through First Floor Courtyard Building

PROJECT	ISSUER	AREA	LEVEL	TYPE	TRADE	SEQUENCE	REV
P4PBT	STW	AFA	01	SEC	A31	143210	E



DG



- SEE FACADE PACKAGE FOR DETAIL
- CONTINUOUS PERIMETER DRAINAGE
- VENTED DRAINAGE GRILL FOR ACCESS TO SYPHONIC RW OUTLET BY M&E SUB-CONTRACTOR
- GRANITE SETTS 200 X 300 MM (STARTING GRANITE SETTS ON A FULL SET. NO CUT SETS) WITH PERMEABLE JOINTS
- MINIMUM 25 MM OF CRUSHED GRAVEL BEDDING
- FILTER LAYER
- 25 MM OF DRAINAGE LAYER WITH GRAVEL INFILL
- ROOF FILTER LAYER
- 120 MM OF RIGID INSULATION
- ROOT-RESISTANT WATERPROOFING
- CONCRETE SLAB WITH FALL TOWARD WATER OUTLETS (MINIMUM 1:80)
- STEEL COLUMN TO S.E. DESIGN AND SPECIFICATION, FIXED DIRECTLY TO STEEL BEAM. BASE SURROUNDED BY CONCRETE AND PITCH POCKET WEATHERING DETAIL

- STAINLESS STEEL OR ANODIZED ALUMINIUM POST FIXED TO CONCRETE PLINTH @ 2250 C/C
- LAMINATED TOUGHENED GLASS SCREEN
- STAINLESS STEEL OR ANODIZED ALUMINIUM RAIL AND SUPPORTS
- VENTED DRAINAGE GRILL FOR ACCESS TO SYPHONIC RW OUTLET BY M&E SUB-CONTRACTOR

Rev. E
Dimension added

- NOMINAL 350 PAINTED STEEL OR ALUMINIUM CHANNEL TO EXT PERIMETER OF ROOF BY CLADDING CONTRACTOR
- EXPOSED BEAM LINED UP EXTERNALLY WITH EXPOSED COLUMN
- INTERNAL INSULATION WRAPPD AROUND STEEL BEAMS
- NOMINAL 150 EXTERNAL GRADE PAINTED STEEL OR ALUMINIUM PERIMETER CHANNEL TO EXT PERIMETER OF SOFFIT BY CLADDING CONTRACTOR
- PPC ALUMINIUM SOFFIT REFER TO FACADE PACKAGE FOR DETAIL

SEC-BB Roof-First Floor
143211 1:10

NOTES:

Rev	DATE	REVISION HISTORY	Dsg	Drw	Clk	App
E	11.11.16	100% Stage E Issue	STW	BB	RM	KB
D	17/08/16	Updated to Structural Engineers' comments	STW	RM	KB	KB
C	01/08/16	Updated to Byuk Comments and Issued for 90% Review	STW	BB	MK	KB
B	18/07/16	Issued For Tender	STW	STW	BYUK	BYUK
A	06/07/16	Issued For Facade and Roof Tender	STW	STW	BYUK	BYUK

ALL REVISIONS

Rev	DATE	REVISION HISTORY	Dsg	Drw	Clk	App
E	11.11.16	100% Stage E Issue	STW	BB	RM	KB
D	17/08/16	Updated to Structural Engineers' comments	STW	RM	KB	KB
C	01/08/16	Updated to Byuk Comments and Issued for 90% Review	STW	BB	MK	KB
B	18/07/16	Issued For Tender	STW	STW	BYUK	BYUK
A	06/07/16	Issued For Facade and Roof Tender	STW	STW	BYUK	BYUK



BOUYGUES
Head Office:
Elizabeth House,
39 York Road,
London, SE1 7NQ,
Tel: 020 7401 0020
Fax: 020 7401 0030
www.bouygues-uk.com

University College London Hospitals NHS Foundation Trust

Name	Signature	Date
Designed by	STW	11.11.16
Drawn by	BB	11.11.16
Checked	RM	11.11.16
Approved	KB	11.11.16

ORIGINATOR
Scott Tallon Walker Architects

NG Bailey CampbellReith

VARIAN medical systems Particle Therapy

SCALE: 1:10 @ A1

FIRST ISSUE DATE: 2016/07/06

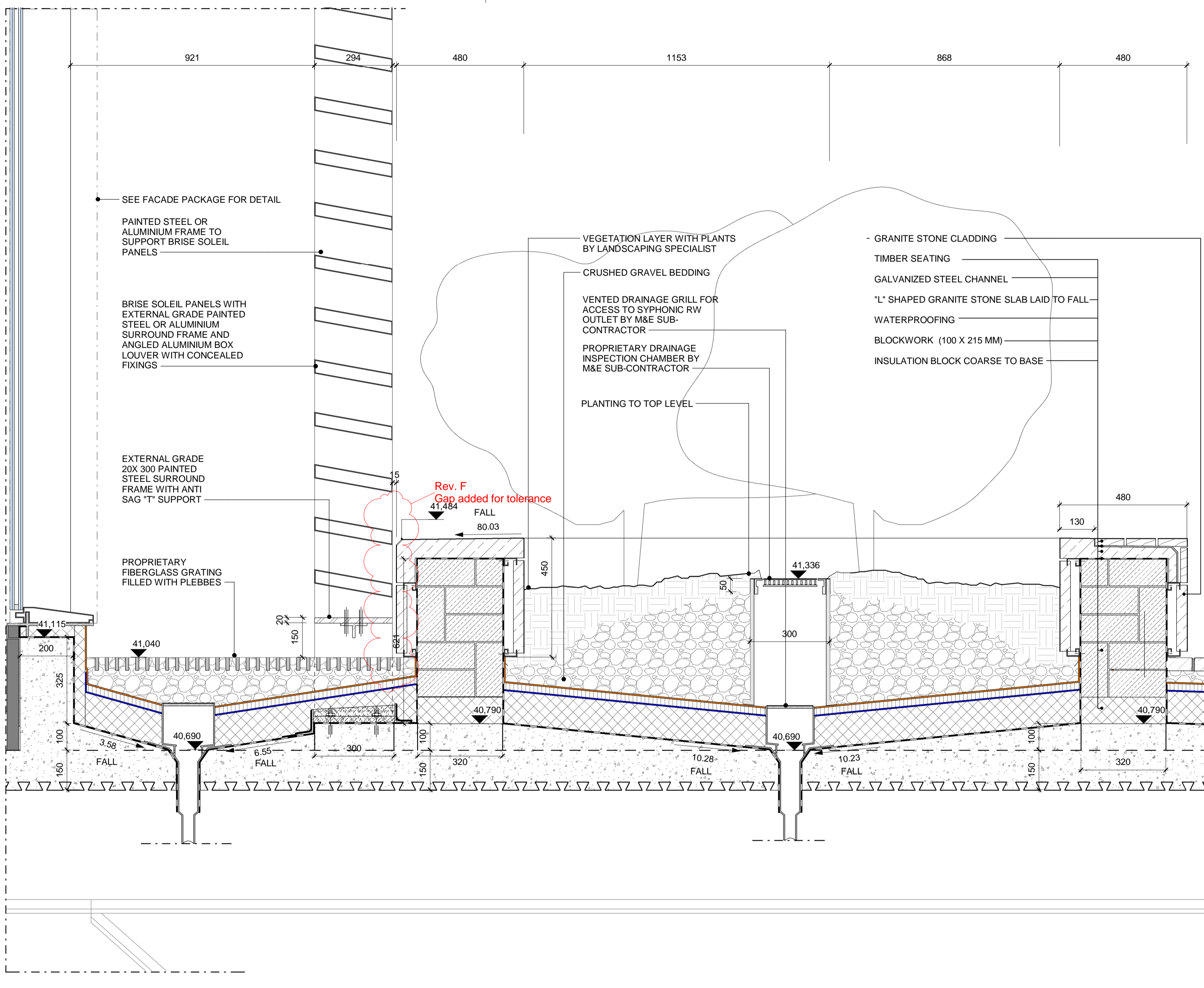
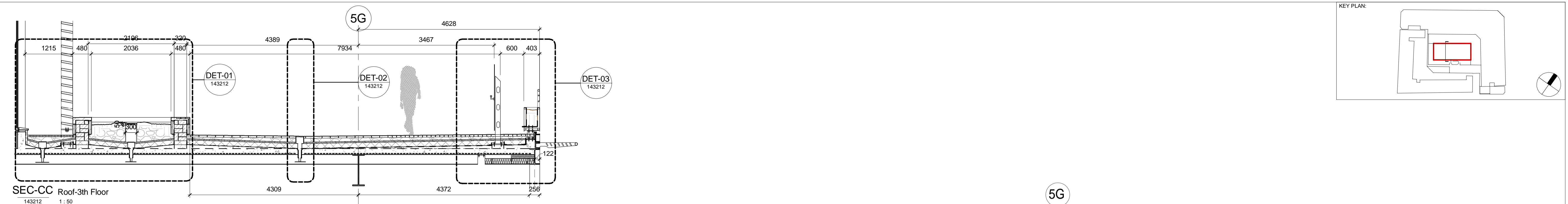
PROPOSED STATUS: For Procurement

BIM FILE NAME: P4PBT-STW-AFA-SL-M3-A31-100060

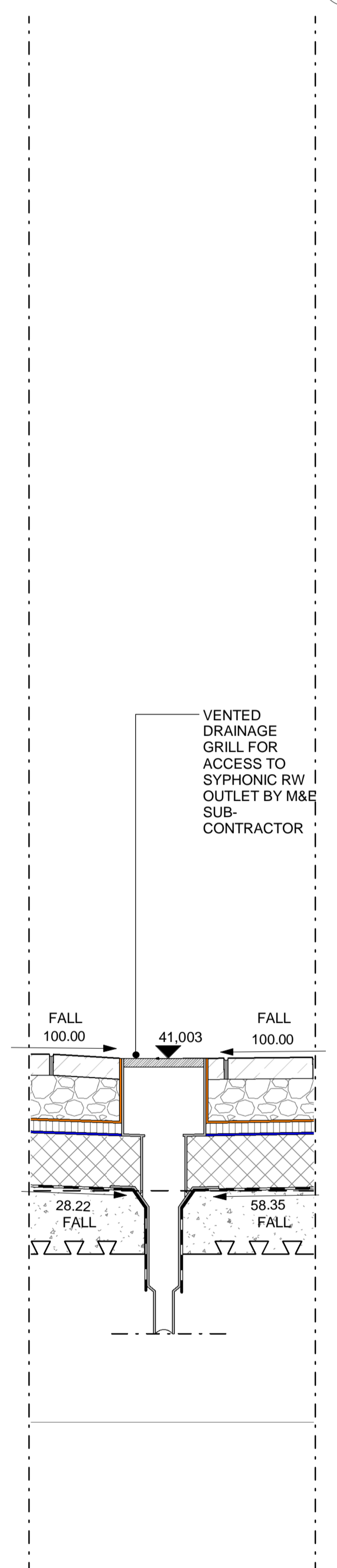
DRAWING TITLE

UCLH Phase 4 & PBT
Roof Package Section BB Through First Floor Courtyard Building

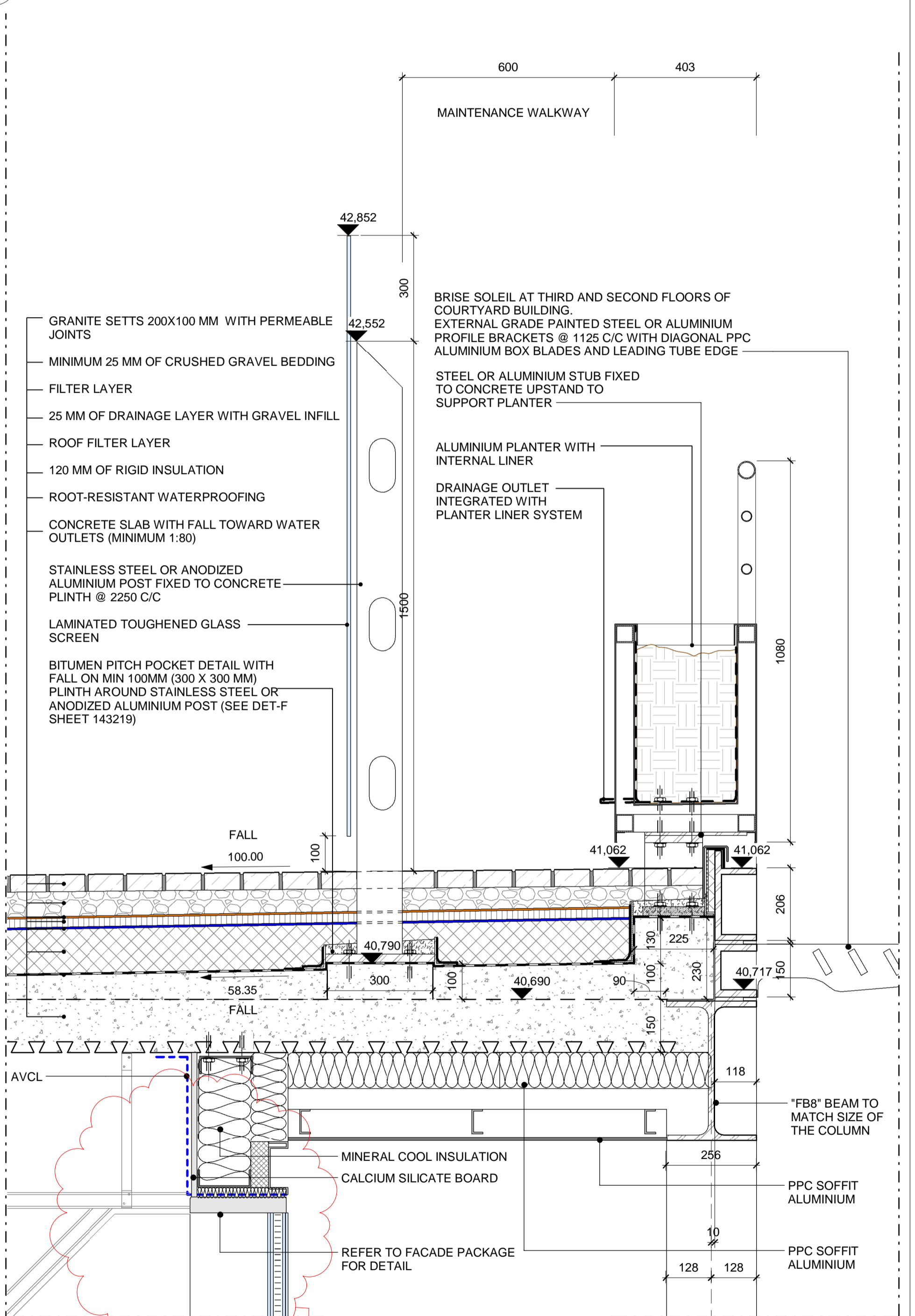
PROJECT	ISSUER	AREA	LEVEL	TYPE	TRADE	SEQUENCE	REV
P4PBT	STW	AFA	01	SEC	A31	143211	E



DET-01
143212 1:10



DET-02
143212 1:10



DET-03
143212 1:10

NOTES:

F	11.11.16	100% Stage E issue.	STW	BB	RM	KB
E	17/08/16	Updated to Structural Engineers' comments	STW	RM	KB	KB
D	01/08/16	Updated to Byuk Comments and issued for 90% Review	STW	BB	MK	KB
C	18/07/16	Issued For Tender	STW	STW	BYJK	BYJK
B	06/07/16	Issued For Facade and Roof Tender	STW	STW	BYJK	BYJK
A	12/04/16	Issued for 50% Review	STW	STW	BYJK	BYJK
Rev	DATE	REVISION HISTORY	Dsg	Dwg	Chk	App

ALL REVISIONS

F	11.11.16	100% Stage E issue.	STW	BB	RM	KB
E	17/08/16	Updated to Structural Engineers' comments	STW	RM	KB	KB
D	01/08/16	Updated to Byuk Comments and issued for 90% Review	STW	BB	MK	KB
C	18/07/16	Issued For Tender	STW	STW	BYJK	BYJK
B	06/07/16	Issued For Facade and Roof Tender	STW	STW	BYJK	BYJK
A	12/04/16	Issued for 50% Review	STW	STW	BYJK	BYJK
Rev	DATE	REVISION HISTORY	Dsg	Dwg	Chk	App



BOUYGUES
Head Office:
Elizabeth House,
39 York Road,
London, SE1 7NQ,
Tel: 020 7401 0020
Fax: 020 7401 0030
www.bouygues-uk.com

University College London Hospitals **NHS**
NHS Foundation Trust

Designed by	Name	Signature	Date
Drawn by	BB		11.11.16
Checked	RM		11.11.16
Approved	KB		11.11.16

ORIGINATOR
Scott Tallon Walker Architects
NG Bailey CampbellReith
ccrd h
VARIAN Particle Therapy

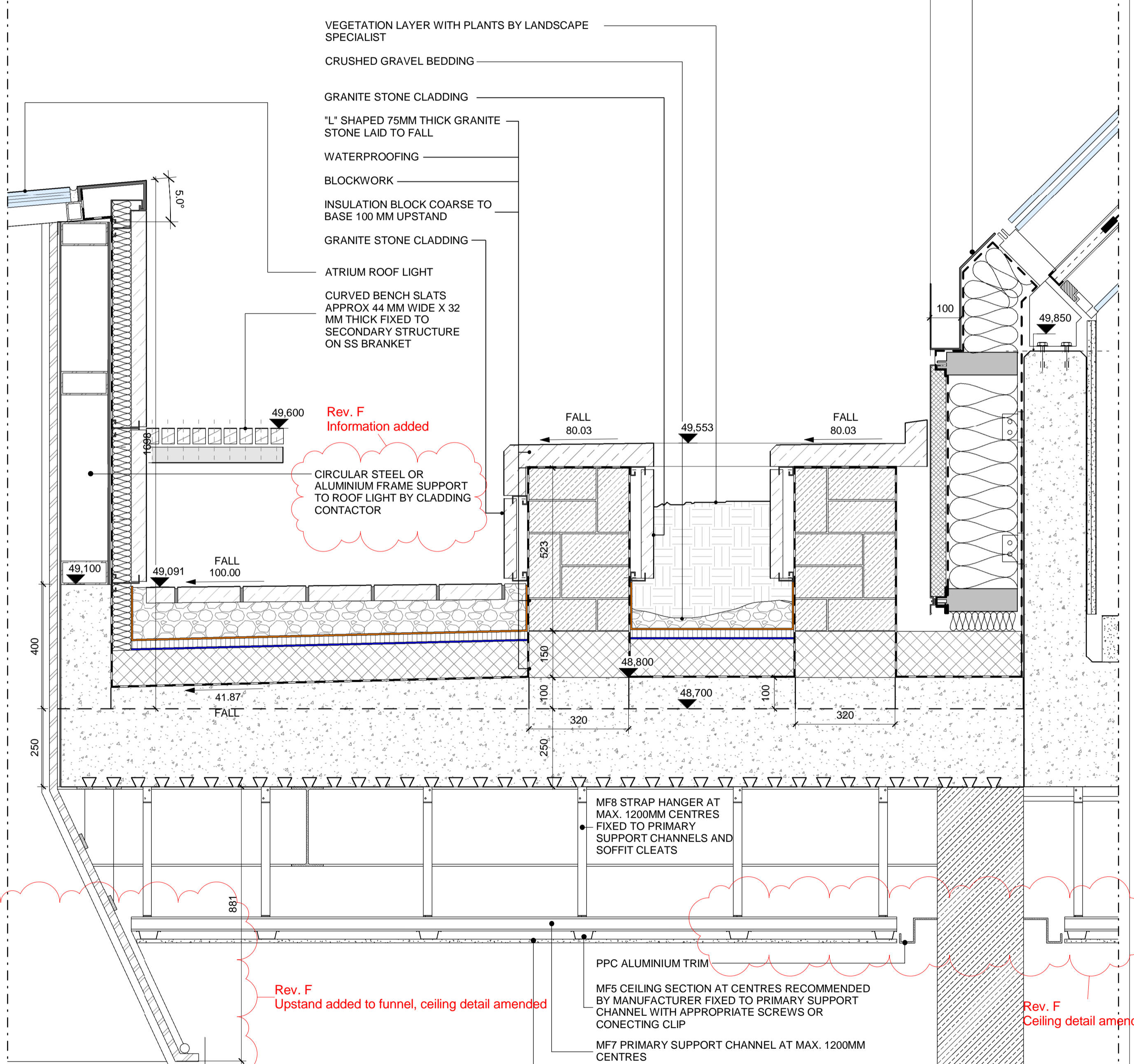
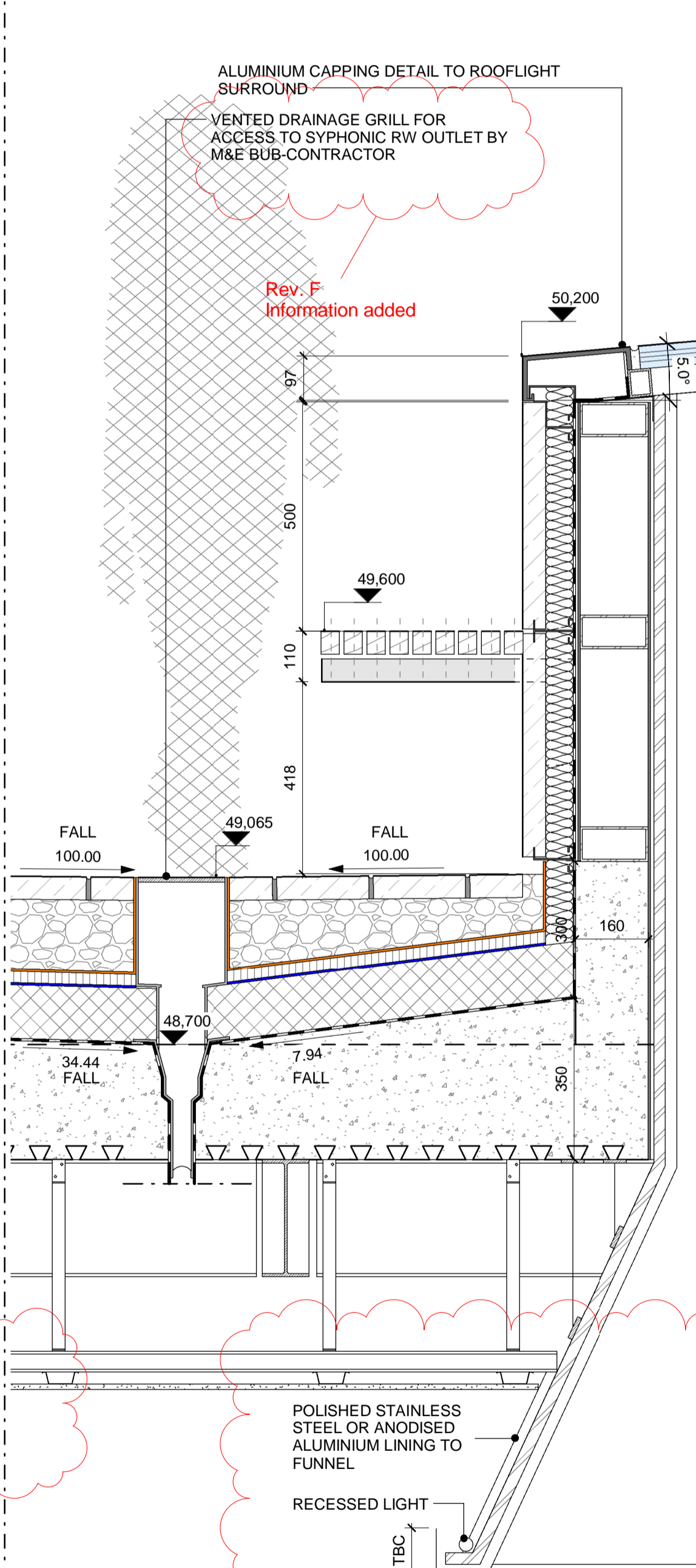
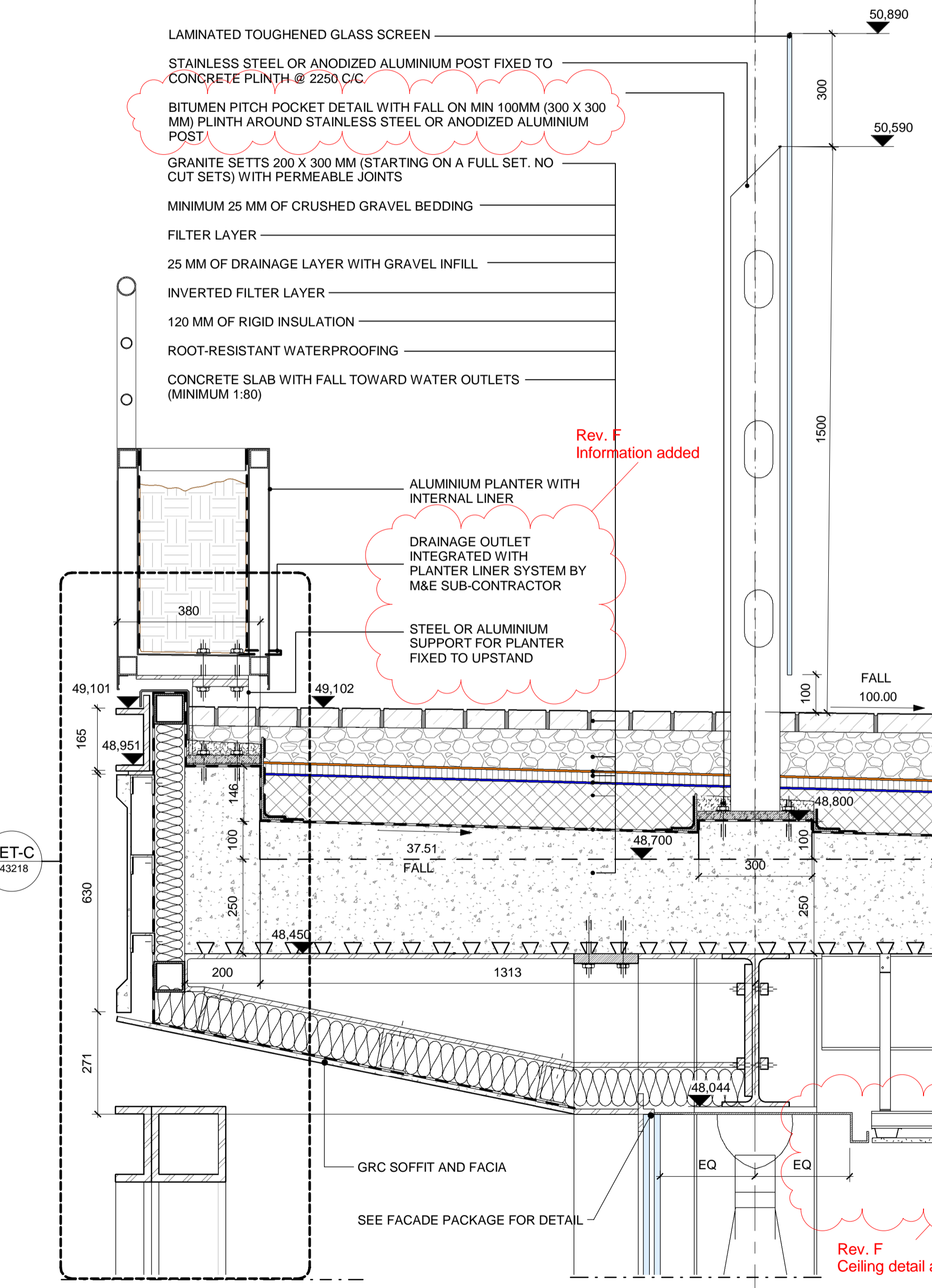
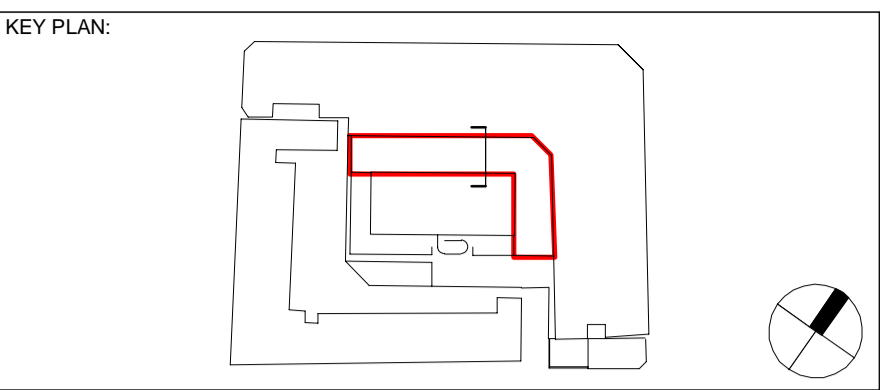
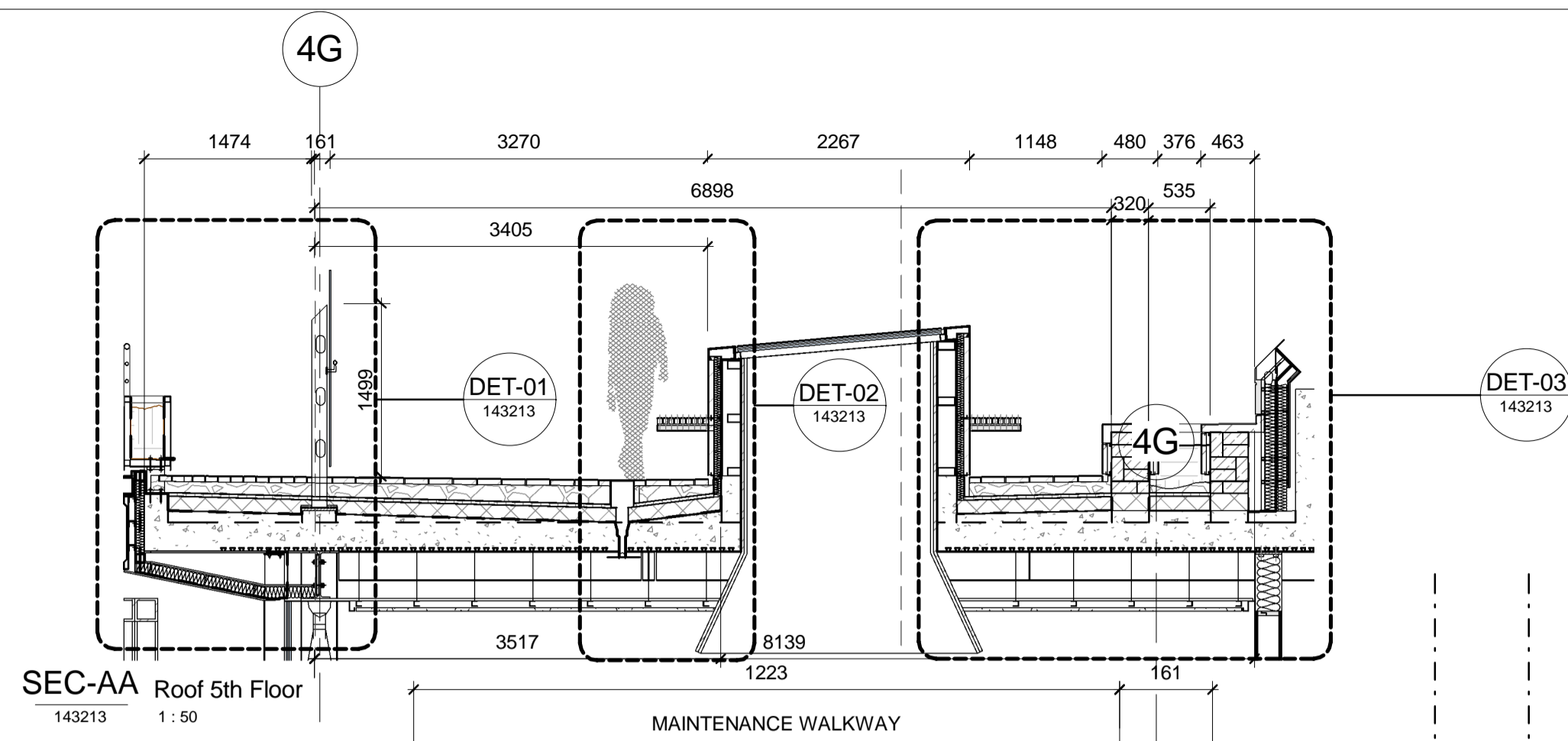
SCALE: As indicated @ A1
BIM FILE NAME: P4PBT-STW-AFA-SL-M3-A31-100060

FIRST ISSUE DATE: 2016/04/06
PROPOSED STATUS: For Procurement

DRAWING TITLE

UCLH Phase 4 & PBT
Roof Package Section CC Through Third Floor Courtyard Building

PROJECT	ISSUER	AREA	LEVEL	TYPE	TRADE	SEQUENCE	REV
P4PBT	STW	AFA	03	SEC	A31	143212	F



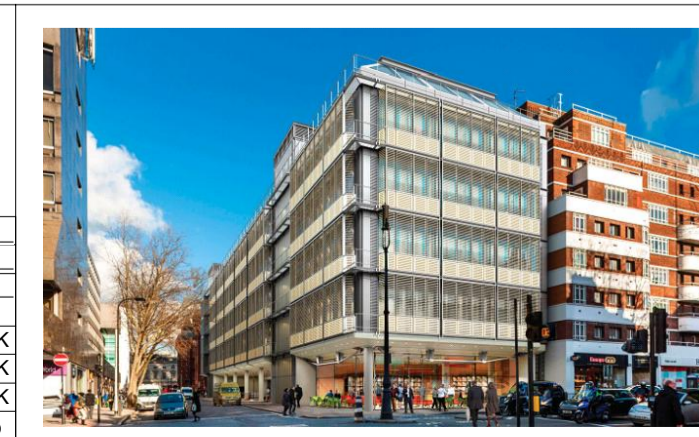
DET-01 143213 1:10
 DET-02 143213 1:10
 DET-03 143213 1:10

NOTES:

Rev	DATE	REVISION HISTORY	Dsg	Drw	Chk	App
F	11.11.16	100% Stage E issue.	STW	BB	RM	KB
E	17/08/16	Updated to Structural Engineers' comments	STW	RM	KB	KB
D	01/08/16	Updated to Byuk Comments and issued for 90% Review	STW	BB	MK	KB
C	18/07/16	Issued For Tender	STW	STW	BYUK	BYUK
B	06/07/16	Issued For Facade and Roof Tender	STW	STW	BYUK	BYUK
A	12/04/16	Issued for 50% Review	STW	STW	BYUK	BYUK

ALL REVISIONS

Rev	DATE	REVISION HISTORY	Dsg	Drw	Chk	App
F	11.11.16	100% Stage E issue.	STW	BB	RM	KB
E	17/08/16	Updated to Structural Engineers' comments	STW	RM	KB	KB
D	01/08/16	Updated to Byuk Comments and issued for 90% Review	STW	BB	MK	KB
C	18/07/16	Issued For Tender	STW	STW	BYUK	BYUK
B	06/07/16	Issued For Facade and Roof Tender	STW	STW	BYUK	BYUK
A	12/04/16	Issued for 50% Review	STW	STW	BYUK	BYUK



BOUYGUES
 Head Office:
 Elizabeth House,
 39 York Road,
 London, SE1 7NQ,
 Tel: 020 7401 0020
 Fax: 020 7401 0030
 www.bouygues-uk.com

University College London Hospitals **NHS**
 NHS Foundation Trust
 NG Bailey CampbellReith
 VARIAN
 Particle Therapy

Name	Signature	Date
Designed by	STW	11.11.16
Drawn by	BB	11.11.16
Checked	RM	11.11.16
Approved	KB	11.11.16

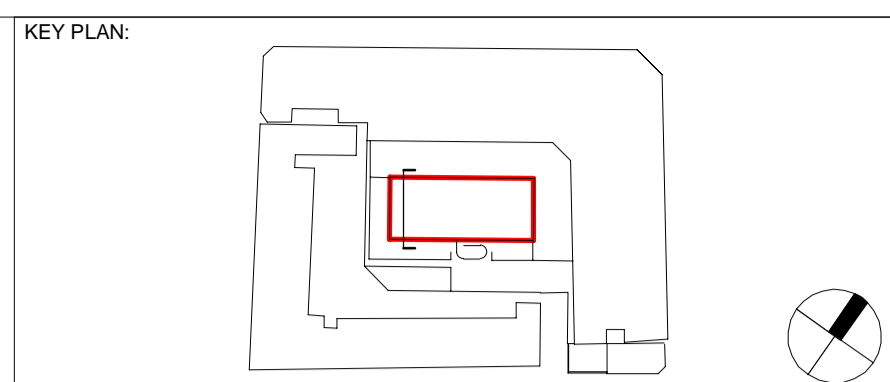
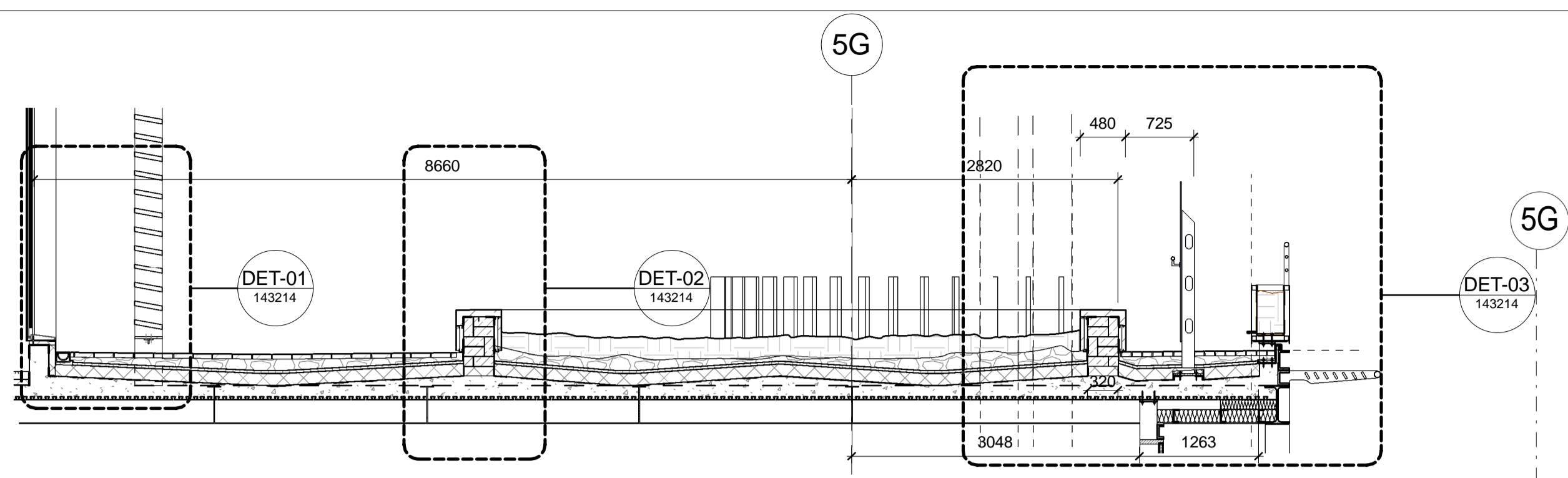
ORIGINATOR
 Scott Tallon Walker Architects
 SCALE @ A1
 As indicated
 FIRST ISSUE DATE
 2016/04/12
 BIM FILE NAME
 P4PBT-STW-AFA-SL-M3-A31-100060
 PROPOSED STATUS
 For Procurement

DRAWING TITLE

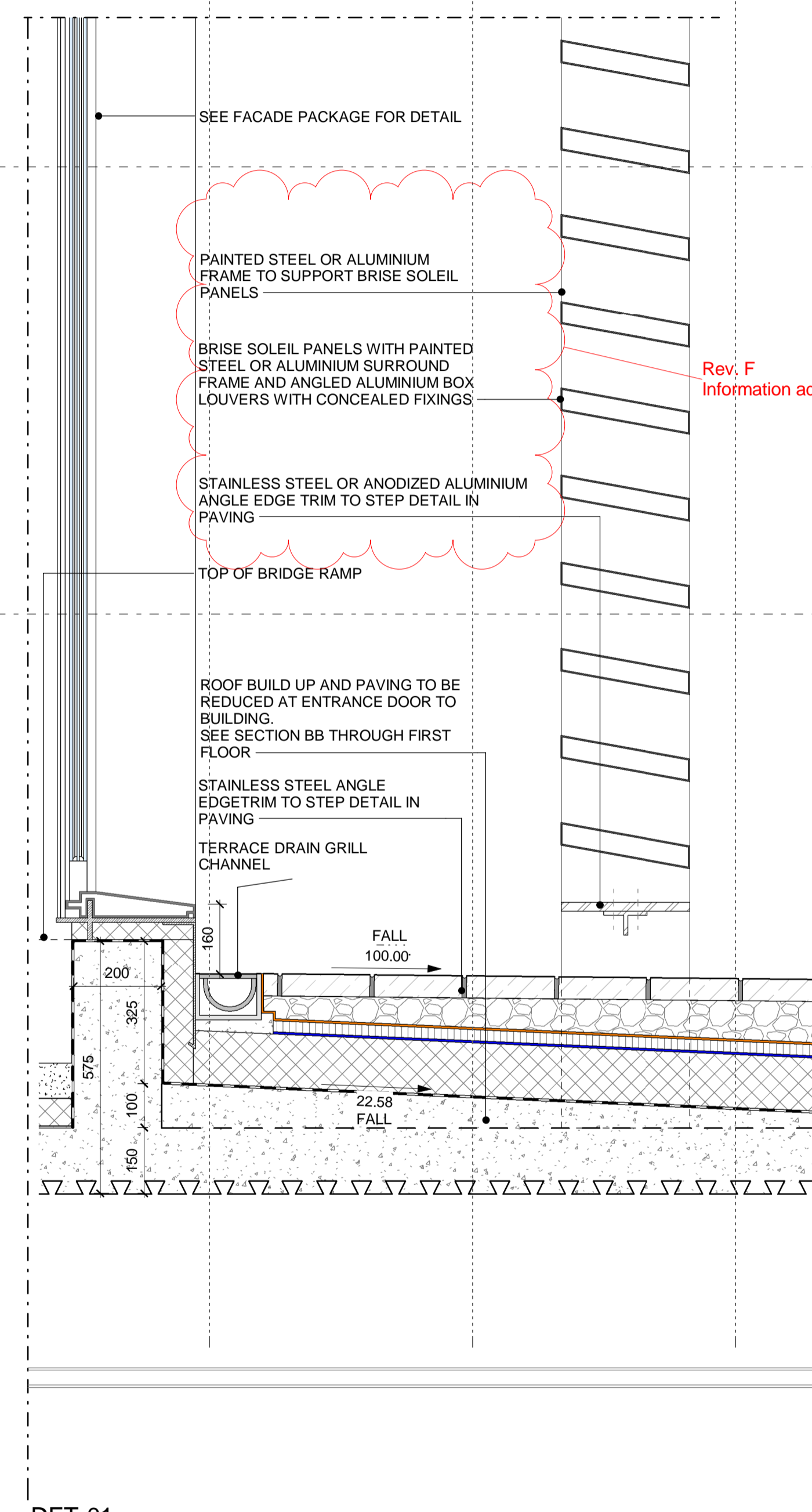
UCLH Phase 4 & PBT

Roof Package Section AA Through Fifth Floor Atrium Roof

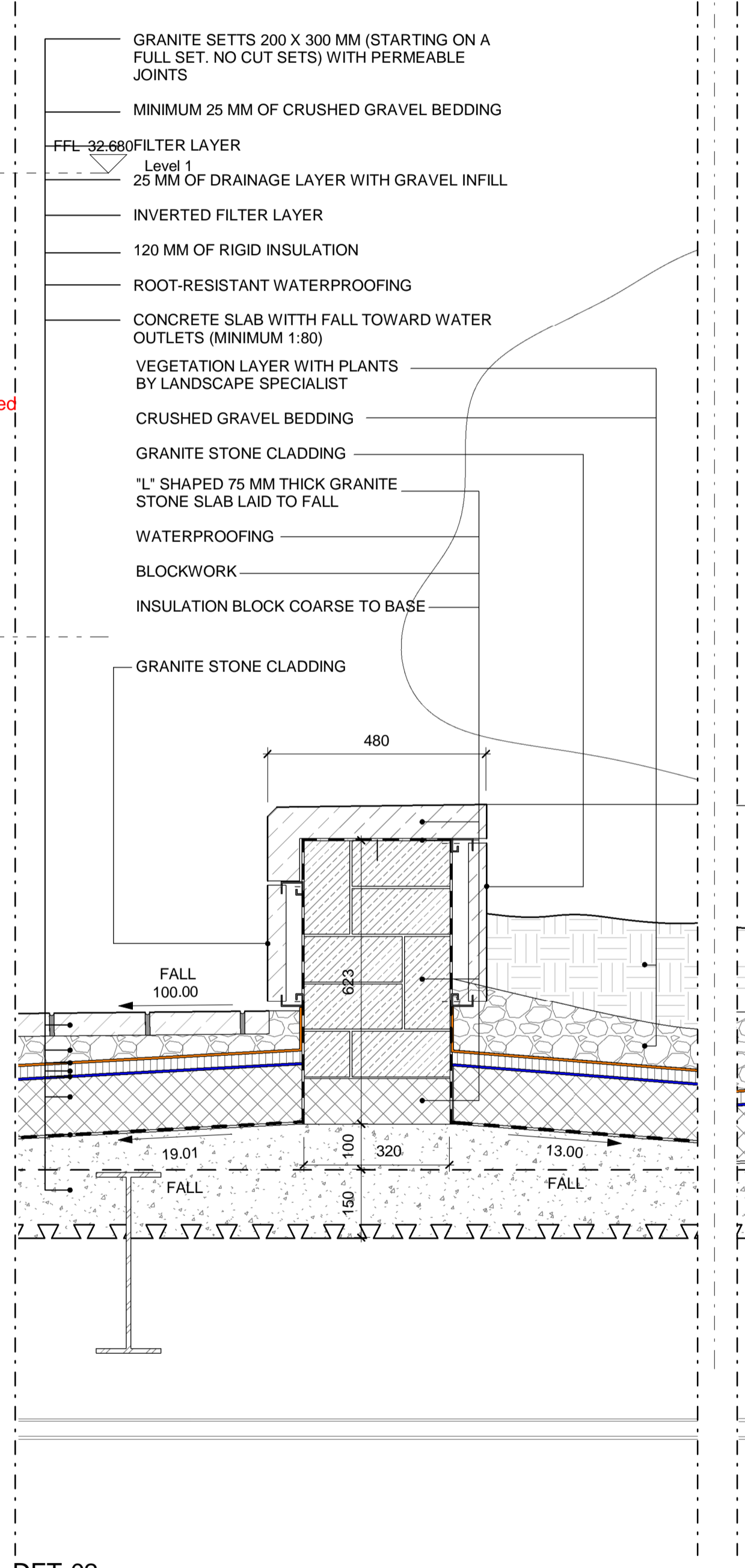
PROJECT	ISSUER	AREA	LEVEL	TYPE	TRADE	SEQUENCE	REV
P4PBT	STW	AFA	05	SEC	A31	143213	F



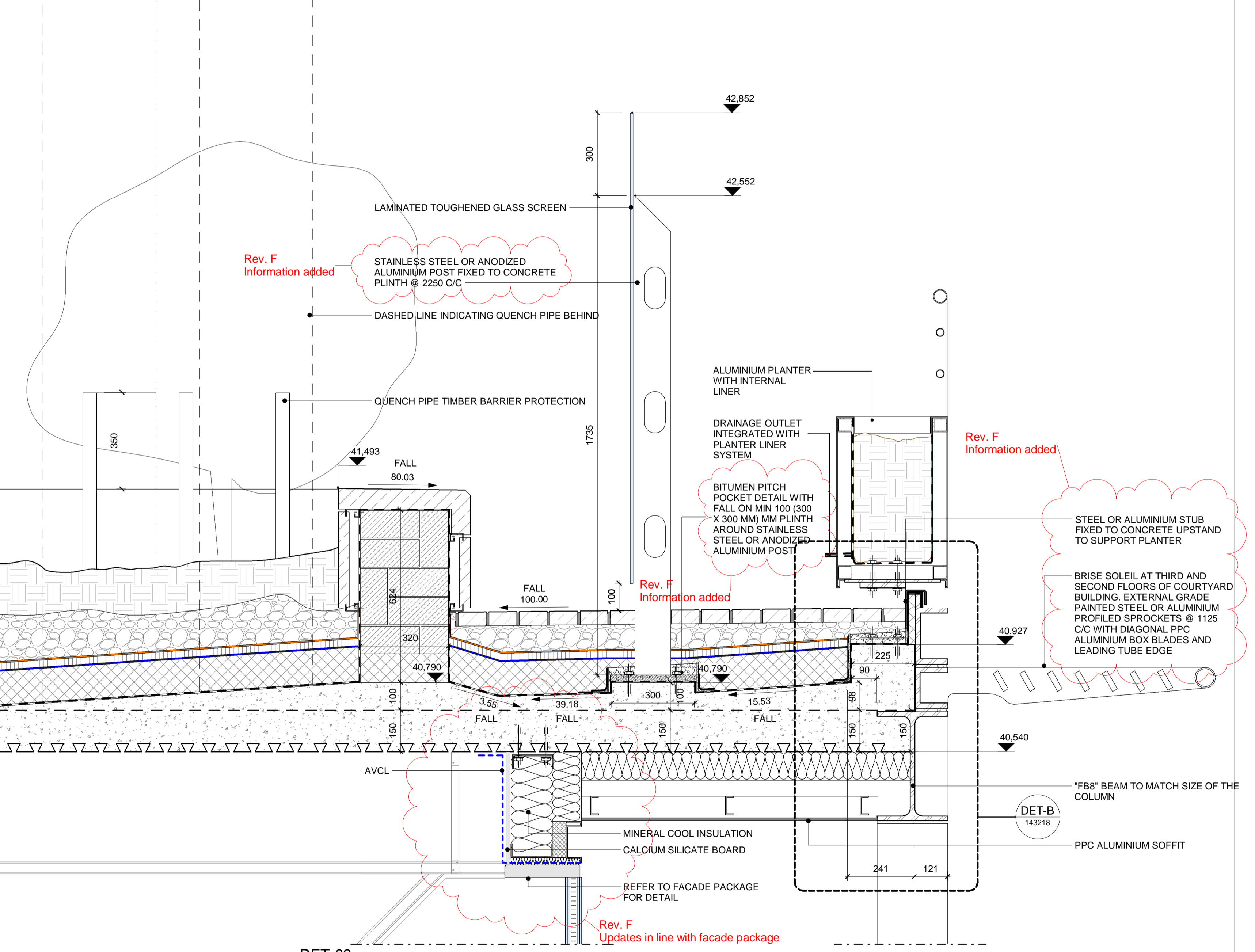
SEC-DD Roof-Third Floor
143214 1:50



DET-01
143214 1:10



DET-02
143214 1:10



DET-03
143214 1:10

NOTES:

Rev	DATE	REVISION HISTORY	Dsg	Dw	Clk	App
F	11.11.16	100% Stage E Issue.	STW	BB	RM	KB
E	17/08/16	Updated to Structural Engineers' comments	STW	RM	KB	KB
D	01/08/16	Updated to Byuk Comments and Issued for 90% Review	STW	BB	MK	KB
C	18/07/16	Issued For Tender	STW	STW	BYJK	BYJK
B	06/07/16	Issued For Facade and Roof Tender	STW	STW	BYJK	BYJK
A	12/04/16	Issued for 50% Review	STW	STW	BYJK	BYJK

ALL REVISIONS

Rev	DATE	REVISION HISTORY	Dsg	Dw	Clk	App
F	11.11.16	100% Stage E Issue.	STW	BB	RM	KB
E	17/08/16	Updated to Structural Engineers' comments	STW	RM	KB	KB
D	01/08/16	Updated to Byuk Comments and Issued for 90% Review	STW	BB	MK	KB
C	18/07/16	Issued For Tender	STW	STW	BYJK	BYJK
B	06/07/16	Issued For Facade and Roof Tender	STW	STW	BYJK	BYJK
A	12/04/16	Issued for 50% Review	STW	STW	BYJK	BYJK



BOUYGUES
Head Office:
Elizabeth House,
39 York Road,
London, SE1 7NQ.
Tel: 020 7401 0020
Fax: 020 7401 0030
www.bouygues-uk.com

University College London Hospitals NHS Foundation Trust
NHS
NG Bailey CampbellReith
VARIAN medical systems Particle Therapy

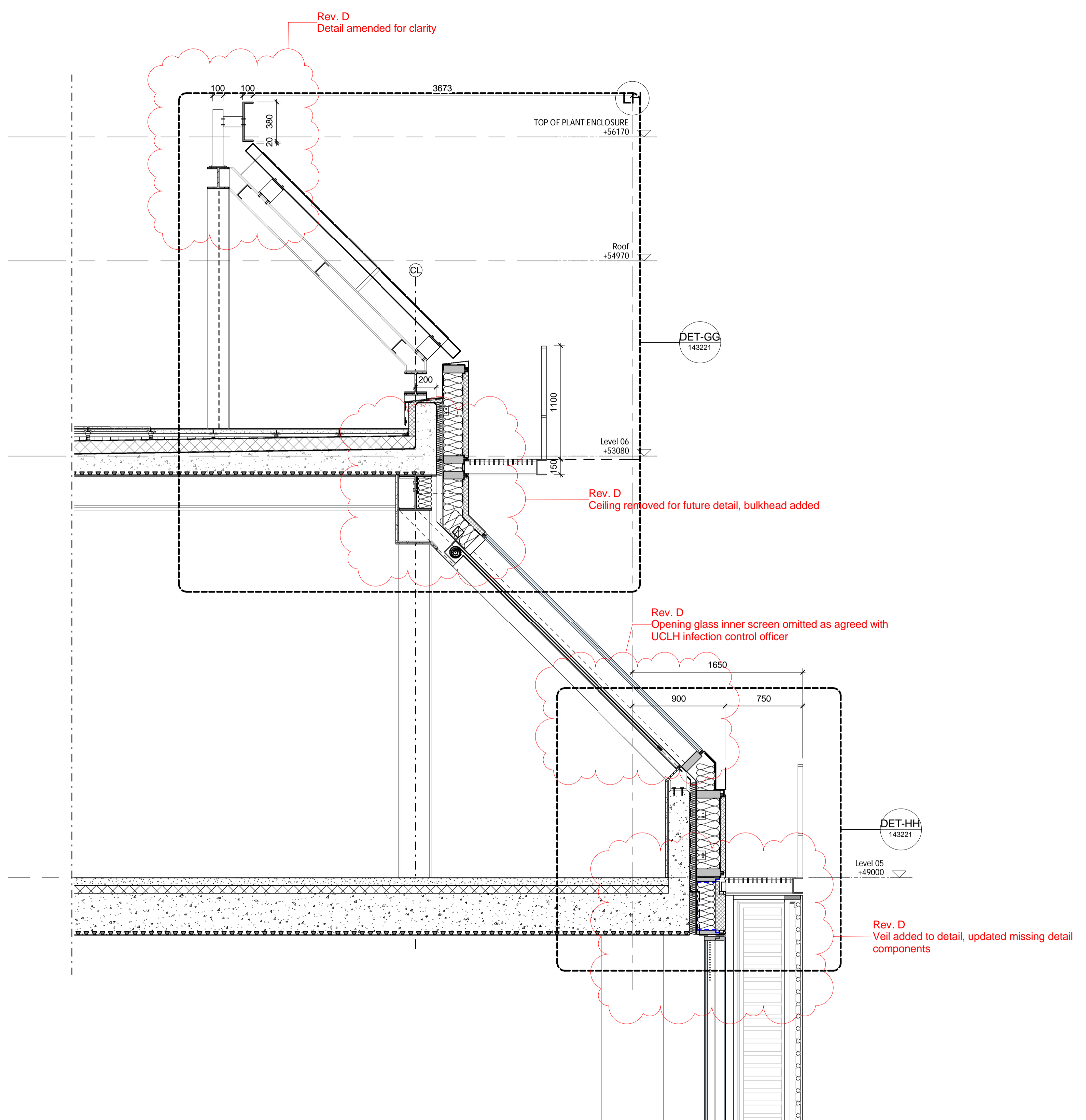
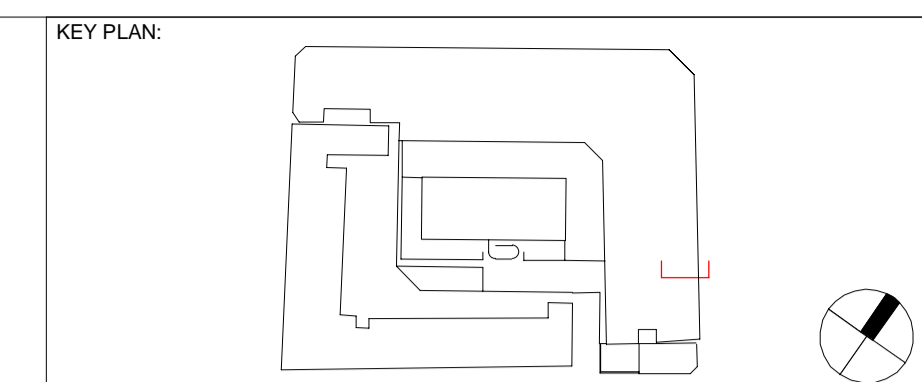
Name	Signature	Date
Designed by	STW	2016/11/11
Drawn by	BB	2016/11/11
Checked	RM	2016/11/11
Approved	KB	2016/11/11

ORIGINATOR
Scott Tallon Walker Architects
NG Bailey CampbellReith
VARIAN medical systems Particle Therapy

SCALE: As indicated @ A1
BIM FILE NAME: P4PBT-STW-AFA-SL-M3-A31-100060
FIRST ISSUE DATE: 2016/04/12
PROPOSED STATUS: For Procurement

DRAWING TITLE
UCLH Phase 4 & PBT
Roof Package Section DD Through Third Floor Courtyard Building

PROJECT	ISSUER	AREA	LEVEL	TYPE	TRADE	SEQUENCE	REV
P4PBT	STW	AFA	03	SEC	A31	143214	F



SEC-AA Roof-5th and 6th Floor
143215 1:25

NOTES:

ALL REVISIONS						
Rev	DATE	REVISION HISTORY	Dsg	Drw	Chk	App
D	11.11.16	100% Stage E issue.	STW	SL	RM	KB
C	01/08/16	Updated to Byuk Comments and Issued for 90% Review	STW	CB	MK	KB
B	18/07/16	Issued For Tender	STW	STW	BYUK	BYUK
A	06/07/16	Issued For Facade and Roof Tender	STW	STW	BYUK	BYUK



BOUYGUES
Head Office:
Elizabeth House,
39 York Road,
London, SE1 7NG,
Tel: 020 7401 0020
Fax: 020 7401 0030
www.bouygues-uk.com

University College London Hospitals NHS Foundation Trust

Name	Signature	Date
Designed by	STW	11.11.16
Drawn by	SL	11.11.16
Checked	RM	11.11.16
Approved	KB	11.11.16

ORIGINATOR
Scott Tallon Walker Architects

NG Bailey CampbellReith

VARTAN medical systems Particle Therapy

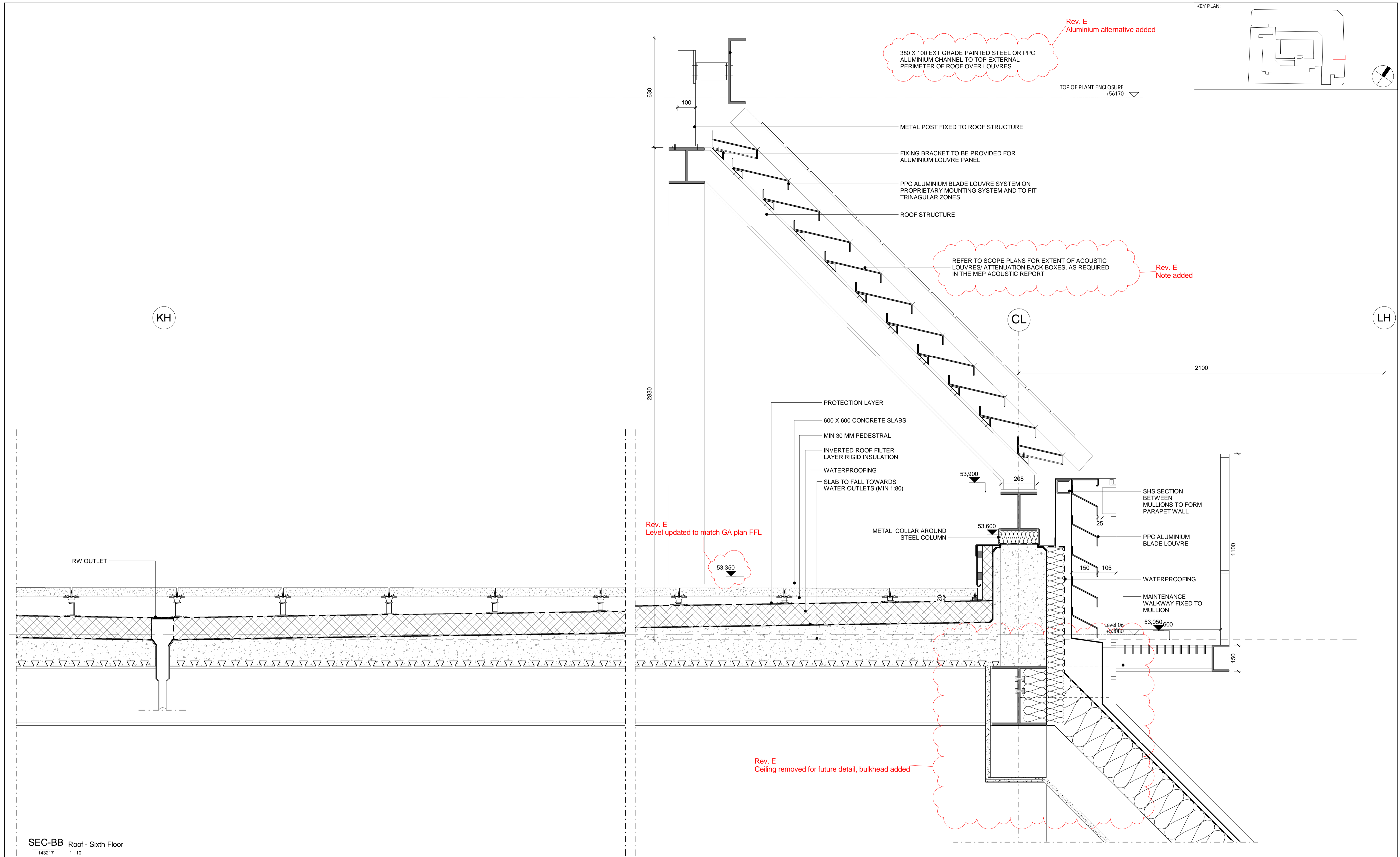
SCALE	@ A1	BIM FILE NAME
1 : 25		P4PBT-STW-AFA-SL-M3-A31-100060
FIRST ISSUE DATE	PROPOSED STATUS	
2016/07/06	For Procurement	

DRAWING TITLE

UCLH Phase 4 & PBT

Roof Package Section AA Through 5th and 6th Floor

PROJECT	ISSUER	AREA	LEVEL	TYPE	TRADE	SEQUENCE	REV
P4PBT	STW	AFA	06	SEC	A31	143215	D

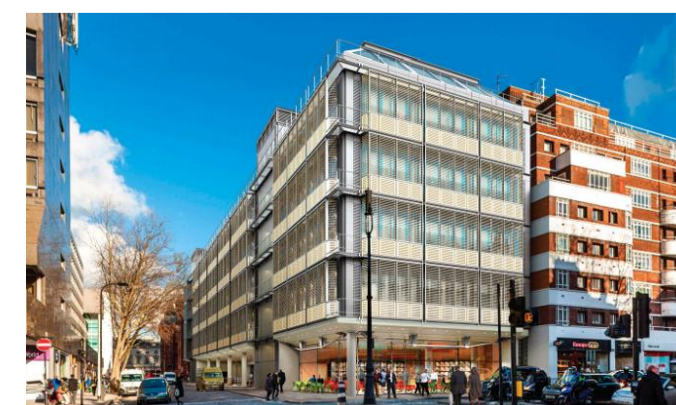


SEC-BB Roof - Sixth Floor
143217 1:10

NOTES:

ALL REVISIONS

Rev	DATE	REVISION HISTORY	Dsg	Drw	Chk	App
E	11.11.16	100% Stage E Issue	STW	SL	RM	KB
D	17/08/16	Updated to Structural Engineers' comments	STW	RM	KB	KB
C	01/08/16	Updated to Byuk Comments and Issued for 90% Review	STW	CB	MK	KB
B	18/07/16	Issued For Tender	STW	STW	BYUK	BYUK
A	06/07/16	Issued For Facade and Roof Tender	STW	STW	BYUK	BYUK



Head Office:
Elizabeth House,
39 York Road,
London, SE1 7NQ,
Tel: 020 7401 0020
Fax: 020 7401 0030
www.bouygues-uk.com

University College London Hospitals NHS Foundation Trust

Name	Signature	Date
Designed by	STW	11.11.16
Drawn by	SL	11.11.16
Checked	RM	11.11.16
Approved	KB	11.11.16

ORIGINATOR
Scott Tallon Walker Architects
NG Bailey CampbellReith

SCALE	@ A1	BIM FILE NAME
1:10		P4PBT-STW-AFA-SL-M3-A31-100060
FIRST ISSUE DATE	PROPOSED STATUS	
2016/07/06	For Procurement	



DRAWING TITLE

UCLH Phase 4 & PBT
Roof Package Section BB Through Sixth Floor

PROJECT	ISSUER	AREA	LEVEL	TYPE	TRADE	SEQUENCE	REV
P4PBT	STW	AFA	06	SEC	A31	143217	E