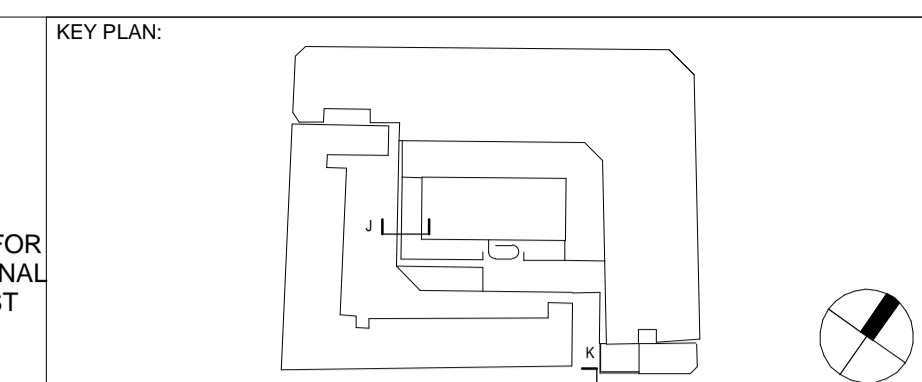


SEC-JJ External Works-Paramount Court Basement Junction
143707 1:10



BASE LEVELLING:
IF REQUIRED EXTEND OF SHARP SAND/CEMENT BLINDING TO BE APPROVED
BASED ON THE REQUIRED DEPTH AND THE KN/SQM COMBINED (DEAD & LIVE)
LOAD REQUIREMENTS OF THE SLAB (BY SE)

Rev. C
BUILD UP UPDATED: MASTIC ASPHALT OMITTED

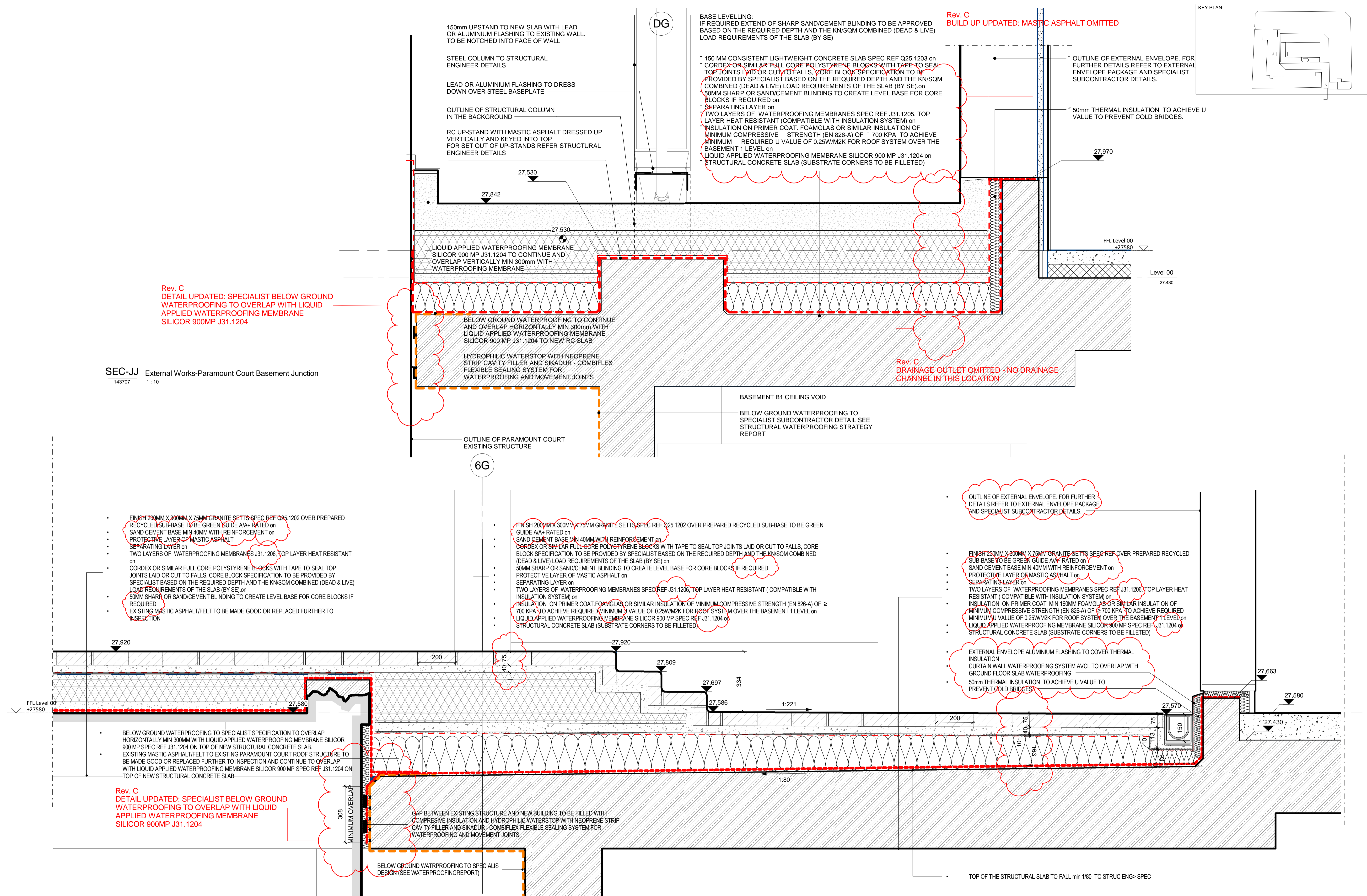
150 MM CONSISTENT LIGHTWEIGHT CONCRETE SLAB SPEC REF Q25.1203 on
CORDEX OR SIMILAR FULL CORE POLYSTYRENE BLOCKS WITH TAPE TO SEAL
TOP JOINTS LAID OR CUT TO FALLS. CORE BLOCK SPECIFICATION TO BE
PROVIDED BY SPECIALIST BASED ON THE REQUIRED DEPTH AND THE KN/SQM
COMBINED (DEAD & LIVE) LOAD REQUIREMENTS OF THE SLAB (BY SE) on
50MM SHARP OR SAND/CEMENT BLINDING TO CREATE LEVEL BASE FOR CORE
BLOCKS IF REQUIRED on
SEPARATING LAYER on
TWO LAYERS OF WATERPROOFING MEMBRANES SPEC REF J31.1205, TOP
LAYER HEAT RESISTANT (COMPATIBLE WITH INSULATION SYSTEM) on
INSULATION ON PRIMER COAT. FOAMGLAS OR SIMILAR INSULATION OF
MINIMUM COMPRESSIVE STRENGTH (EN 826-A) OF \geq 700 KPA TO ACHIEVE
MINIMUM REQUIRED U VALUE OF 0.25W/M2K FOR ROOF SYSTEM OVER THE
BASEMENT 1 LEVEL on
LIQUID APPLIED WATERPROOFING MEMBRANE SILICOR 900 MP J31.1204 on
STRUCTURAL CONCRETE SLAB (SUBSTRATE CORNERS TO BE FILLETED)

OUTLINE OF EXTERNAL ENVELOPE. FOR
FURTHER DETAILS REFER TO EXTERNAL
ENVELOPE PACKAGE AND SPECIALIST
SUBCONTRACTOR DETAILS.

50mm THERMAL INSULATION TO ACHIEVE U
VALUE TO PREVENT COLD BRIDGES.

Rev. C
DETAIL UPDATED: SPECIALIST BELOW GROUND
WATERPROOFING TO OVERLAP WITH LIQUID
APPLIED WATERPROOFING MEMBRANE
SILICOR 900MP J31.1204

Rev. C
DRAINAGE OUTLET OMITTED - NO DRAINAGE
CHANNEL IN THIS LOCATION



FINISH 200MM X 200MM X 75MM GRANITE SETTS SPEC REF Q25.1202 OVER PREPARED
RECYCLED SUB-BASE TO BE GREEN GUIDE A/A+ RATED on
SAND CEMENT BASE MIN 40MM WITH REINFORCEMENT on
PROTECTIVE LAYER OF MASTIC ASPHALT on
SEPARATING LAYER on
TWO LAYERS OF WATERPROOFING MEMBRANES SPEC REF J31.1206, TOP LAYER HEAT RESISTANT
CORDEX OR SIMILAR FULL CORE POLYSTYRENE BLOCKS WITH TAPE TO SEAL TOP
JOINTS LAID OR CUT TO FALLS. CORE BLOCK SPECIFICATION TO BE PROVIDED BY
SPECIALIST BASED ON THE REQUIRED DEPTH AND THE KN/SQM COMBINED (DEAD & LIVE)
LOAD REQUIREMENTS OF THE SLAB (BY SE) on
50MM SHARP OR SAND/CEMENT BLINDING TO CREATE LEVEL BASE FOR CORE BLOCKS IF
REQUIRED
EXISTING MASTIC ASPHALT/FELT TO BE MADE GOOD OR REPLACED FURTHER TO
INSPECTION

FINISH 200MM X 300MM X 75MM GRANITE SETTS SPEC REF Q25.1202 OVER PREPARED RECYCLED SUB-BASE TO BE GREEN
GUIDE A/A+ RATED on
SAND CEMENT BASE MIN 40MM WITH REINFORCEMENT on
CORDEX OR SIMILAR FULL CORE POLYSTYRENE BLOCKS WITH TAPE TO SEAL TOP JOINTS LAID OR CUT TO FALLS. CORE
BLOCK SPECIFICATION TO BE PROVIDED BY SPECIALIST BASED ON THE REQUIRED DEPTH AND THE KN/SQM COMBINED
(DEAD & LIVE) LOAD REQUIREMENTS OF THE SLAB (BY SE) on
50MM SHARP OR SAND/CEMENT BLINDING TO CREATE LEVEL BASE FOR CORE BLOCKS IF REQUIRED
PROTECTIVE LAYER OF MASTIC ASPHALT on
SEPARATING LAYER on
TWO LAYERS OF WATERPROOFING MEMBRANES SPEC REF J31.1206, TOP LAYER HEAT RESISTANT (COMPATIBLE WITH
INSULATION SYSTEM) on
INSULATION ON PRIMER COAT. FOAMGLAS OR SIMILAR INSULATION OF MINIMUM COMPRESSIVE STRENGTH (EN 826-A) OF \geq
700 KPA TO ACHIEVE REQUIRED MINIMUM U VALUE OF 0.25W/M2K FOR ROOF SYSTEM OVER THE BASEMENT 1 LEVEL on
LIQUID APPLIED WATERPROOFING MEMBRANE SILICOR 900 MP SPEC REF J31.1204 on
STRUCTURAL CONCRETE SLAB (SUBSTRATE CORNERS TO BE FILLETED)

FINISH 200MM X 300MM X 75MM GRANITE SETTS SPEC REF Q25.1202 OVER PREPARED RECYCLED
SUB-BASE TO BE GREEN GUIDE A/A+ RATED on
SAND CEMENT BASE MIN 40MM WITH REINFORCEMENT on
PROTECTIVE LAYER OF MASTIC ASPHALT on
SEPARATING LAYER on
TWO LAYERS OF WATERPROOFING MEMBRANES SPEC REF J31.1206, TOP LAYER HEAT
RESISTANT (COMPATIBLE WITH INSULATION SYSTEM) on
INSULATION ON PRIMER COAT. MIN 160MM FOAMGLAS OR SIMILAR INSULATION OF
MINIMUM COMPRESSIVE STRENGTH (EN 826-A) OF \geq 700 KPA TO ACHIEVE REQUIRED
MINIMUM U VALUE OF 0.25W/M2K FOR ROOF SYSTEM OVER THE BASEMENT 1 LEVEL on
LIQUID APPLIED WATERPROOFING MEMBRANE SILICOR 900 MP SPEC REF J31.1204 on
STRUCTURAL CONCRETE SLAB (SUBSTRATE CORNERS TO BE FILLETED)

EXTERNAL ENVELOPE ALUMINIUM FLASHING TO COVER THERMAL
INSULATION
CURTAIN WALL WATERPROOFING SYSTEM AVCL TO OVERLAP WITH
GROUND FLOOR SLAB WATERPROOFING
50mm THERMAL INSULATION TO ACHIEVE U VALUE TO
PREVENT COLD BRIDGES

BELOW GROUND WATERPROOFING TO SPECIALIST SPECIFICATION TO OVERLAP
HORIZONTALLY MIN 300MM WITH LIQUID APPLIED WATERPROOFING MEMBRANE SILICOR
900 MP SPEC REF J31.1204 ON TOP OF NEW STRUCTURAL CONCRETE SLAB
EXISTING MASTIC ASPHALT/FELT TO EXISTING PARAMOUNT COURT ROOF STRUCTURE TO
BE MADE GOOD OR REPLACED FURTHER TO INSPECTION AND CONTINUE TO OVERLAP
WITH LIQUID APPLIED WATERPROOFING MEMBRANE SILICOR 900 MP SPEC REF J31.1204 ON
TOP OF NEW STRUCTURAL CONCRETE SLAB

Rev. C
DETAIL UPDATED: SPECIALIST BELOW GROUND
WATERPROOFING TO OVERLAP WITH LIQUID
APPLIED WATERPROOFING MEMBRANE
SILICOR 900MP J31.1204

GAP BETWEEN EXISTING STRUCTURE AND NEW BUILDING TO BE FILLED WITH
COMPRESSIVE INSULATION AND HYDROPHILIC WATERSTOP WITH NEOPRENE STRIP
CAVITY FILLER AND SIKADUR - COMBIFLEX FLEXIBLE SEALING SYSTEM FOR
WATERPROOFING AND MOVEMENT JOINTS

BELOW GROUND WATERPROOFING TO SPECIALIST
DESIGN (SEE WATERPROOFING REPORT)

NOTES:

CONTRASTING COLOUR FINISH TO SLAB TO DEFINE PEDESTRIAN / CYCLIST ACCESS ROUTE
PLEASE REFER TO 143570 - EXTERNAL WORKS GROUND FLOOR PLAN

| Rev | DATE | REVISION HISTORY | Dsg | Drw | Chk | App |
|-----|------------|--|-----|-----|-----|-----|
| C | 2016.11.15 | Issued For Procurement - 100% Stage E Issue | STW | FL | KK | KB |
| B | 2016/09/03 | S1 - Issued For Coordination / 90% Review / Includes BYUK comments | STW | BB | KK | KB |
| A | 2016/08/26 | S1-Issued for Coordination / 90% Review | STW | BB | KK | KB |

ALL REVISIONS

| Rev | DATE | REVISION HISTORY | Dsg | Drw | Chk | App |
|-----|------------|--|-----|-----|-----|-----|
| C | 2016.11.15 | Issued For Procurement - 100% Stage E Issue | STW | FL | KK | KB |
| B | 2016/09/03 | S1 - Issued For Coordination / 90% Review / Includes BYUK comments | STW | BB | KK | KB |
| A | 2016/08/26 | S1-Issued for Coordination / 90% Review | STW | BB | KK | KB |



BOUYGUES
Head Office:
Elizabeth House,
39 York Road,
London, SE1 7NG,
Tel: 020 7401 0020
Fax: 020 7401 0030
www.bouygues-uk.com

University College London Hospitals NHS Foundation Trust

| Name | Signature | Date |
|-------------|-----------|------------|
| Designed by | STW | 2016.11.15 |
| Drawn by | FL | 2016.11.15 |
| Checked | KK | 2016.11.15 |
| Approved | KB | 2016.11.15 |

ORIGINATOR
Scott Tallon Walker Architects

NG Bailey CampbellReith

VARIAN medical systems Particle Therapy

SCALE: 1:10 @ A1

SCALE: 1:10

FIRST ISSUE DATE: 2016/08/26

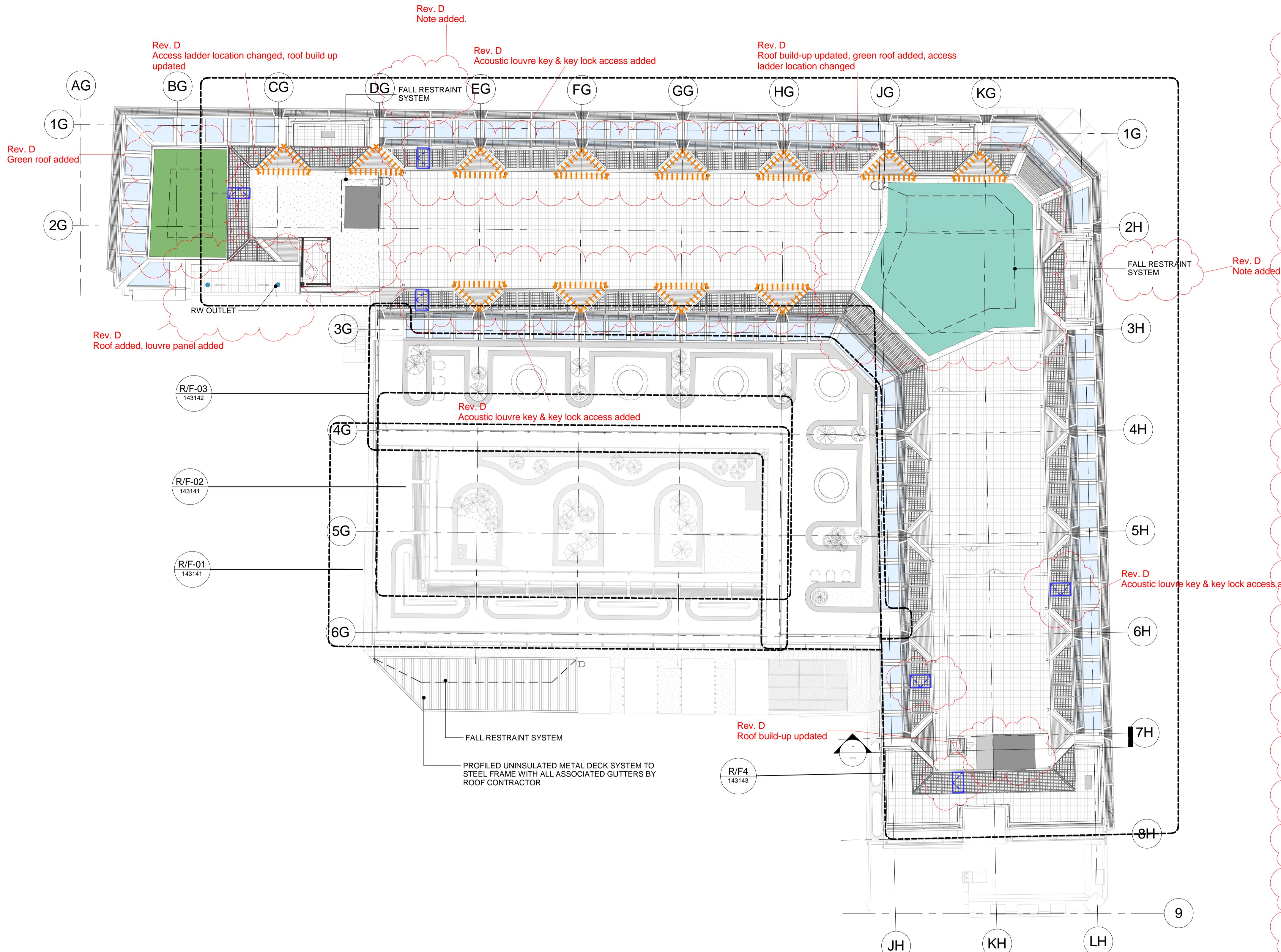
PROPOSED STATUS: For Procurement

BIM FILE NAME: P4PBT-STW-AFA-SL-M3-A31-100060

DRAWING TITLE

UCLH Phase 4 & PBT
External Works Section JJ KK

| PROJECT | ISSUER | AREA | LEVEL | TYPE | TRADE | SEQUENCE | REV |
|---------|--------|------|-------|------|-------|----------|-----|
| P4PBT | STW | AFA | GND | SEC | A31 | 143707 | C |



KEY PLAN:

ROOF PACKAGE LEGEND

- GRANITE SETTS 100MM x 200MM SEE SPECIFICATION Q25.1202
- EXTENSIVE GREEN ROOF ON COMPOSITE DECK WITH INSULATION, SEE SPECIFICATION Q37.1200
- EXTENSIVE GREEN ROOF ON COMPOSITE DECK WITHOUT INSULATION, SEE SPECIFICATION Q37.1200
- GRANITE SETTS 200MM x 300MM SEE SPECIFICATION Q25.1202
- MIN 40MM THICK GRANITE STONE CAPPING
- SLOTTED TIMBER SEAT ON CONCRETE CLAD UPSTANDS SEE SPECIFICATION H42.1205
- TIMBER SEATING ON STEEL FRAME
- PEBBLES (GREY STONE) MIN 50MM DIM WASHED & ROUNDED SEE SPECIFICATION J31.2109
- INTENSIVE GREEN ROOF PLANTING SEE SPECIFICATION Q37.1200
- ROOF LIGHT SEE SPECIFICATION Z25.2115
- SINGLE PIECE TRIANGULAR GRANITE SLAB TO MAKE CORNER SEE SPECIFICATION Q25.1202
- LIGHT GREY FIBREGLASS FLOOR GRATING INFILLED WITH GRAVEL TO ALLOW DRAINAGE
- 600X600 CONCRETE PAVING SLABS SEE SPECIFICATION J31.2107
- UNINSULATED METAL DECK ROOFING SYSTEM ON STEEL STRUCTURE
- GALVANIZED METAL CANOPY TO PROTECT LIFT DOORS
- BARK MULCH
- SLOT DRAIN
- 1800MM HIGH STRUCTURAL GLASS
- STAINLESS STEEL OR ANODIZED ALUMINIUM POST TO GLAZING SCREEN
- RW OUTLET SEE SPECIFICATION Q10.2102
- DIRECTIONS OF FALLS
- GLASS ACCESS GATE
- FALL ARREST SYSTEM
- LOUVRES BETWEEN PV PANELS TO BE ACOUSTIC LOUVRES OR TO HAVE ATTENUATION BACK BOXES, AS REQUIRED IN THE ACOUSTIC REPORT. ALL LOUVRES (REGARDLESS OF ACOUSTIC RATING) ARE TO LOOK THE SAME EXTERNALLY
- KEYLOCK ACCESS THROUGH PV PANEL, HINGED OPENABLE (REFER TO SECURITY DRAWINGS SEQUENCE 171000)
- INDICATIVE POSITION OF POWER POINTS FOR LANDSCAPING MAINTENANCE
- INDICATIVE POSITION OF WATER POINTS FOR LANDSCAPING MAINTENANCE
- IRRIGATION SYSTEM TO BE DEVELOPED IN LINE WITH REVISED LANDSCAPING BRIEF FROM UCLH ONCE INSTRUCTED BY UCLH, TO BE REVIEW AND ACCEPTED BY INFECTION CONTROL

ROOF
00 Location Plan
143140 1:200

NOTES:

ALL REVISIONS

| Rev | DATE | REVISION HISTORY | Dsg | Dw | Clk | App |
|-----|----------|--|-----|-----|------|------|
| D | 11/11/16 | 100% Stage E issue. | STW | SL | RM | KB |
| C | 01/08/16 | Updated to Byuk Comments and Issued for 90% Review | STW | BB | MK | KB |
| B | 18/07/16 | Issued For Tender | STW | STW | BYUK | BYUK |
| A | 06/07/16 | Issued For Facade and Roof Tender | STW | STW | BYUK | BYUK |



BOUYGUES
Head Office:
Elizabeth House,
39 York Road,
London, SE1 7NG,
Tel: 020 7401 0020
Fax: 020 7401 0030
www.bouygues-uk.com

University College London Hospitals **NHS**
NHS Foundation Trust

| Name | Signature | Date |
|------------------|-----------|------------|
| Designed by: STW | | 2016/11/11 |
| Drawn by: SL | | 2016/11/11 |
| Checked: RM | | 2016/11/11 |
| Approved: KB | | 2016/11/11 |

ORIGINATOR
Scott Tallon Walker Architects
NG Bailey CampbellReith

| SCALE | BIM FILE NAME |
|--------------|--------------------------------|
| As indicated | P4PBT-STW-AFA-SL-M3-A31-100060 |

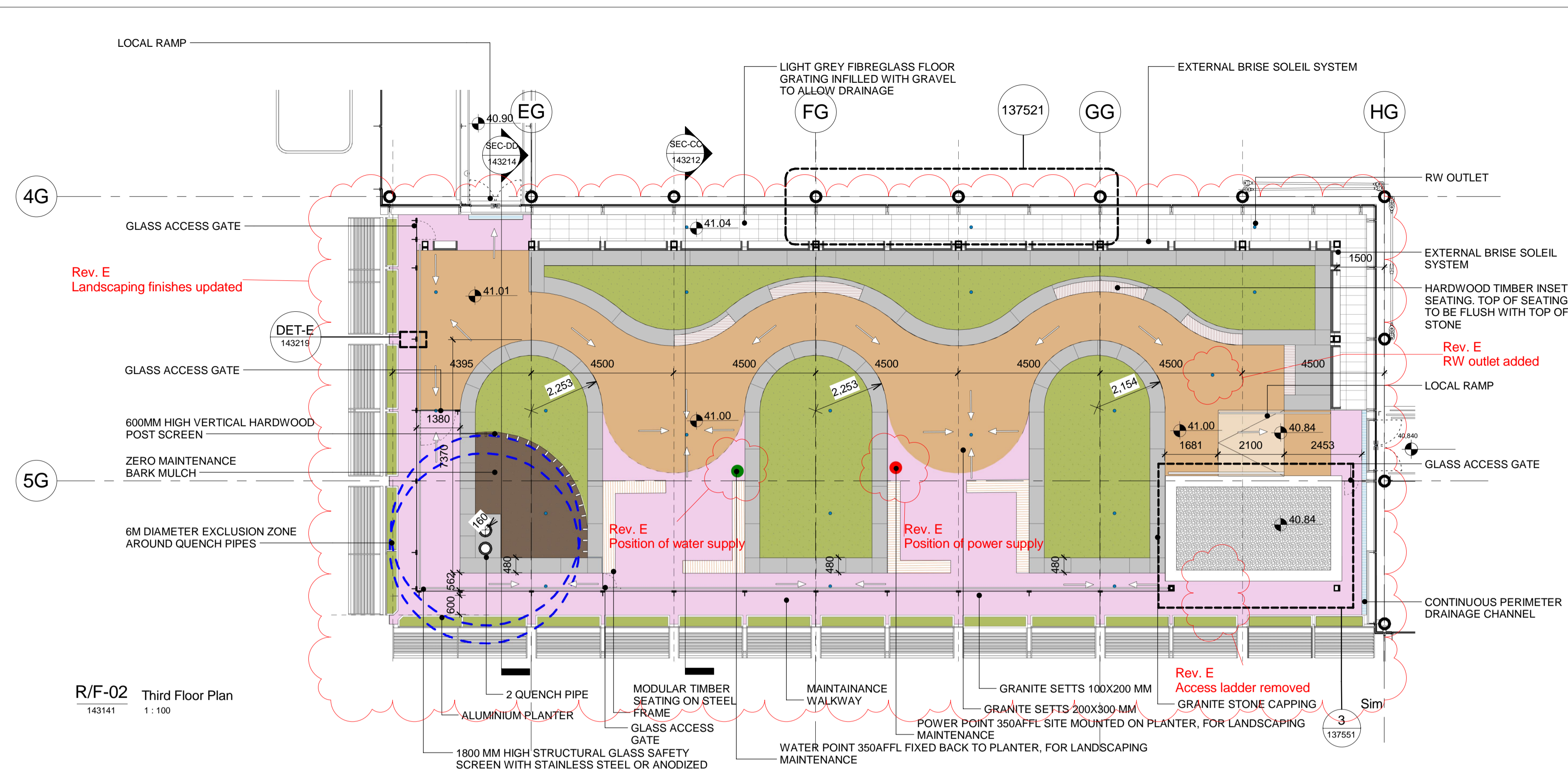


| FIRST ISSUE DATE | PROPOSED STATUS |
|------------------|-----------------|
| 2016/07/18 | For Procurement |

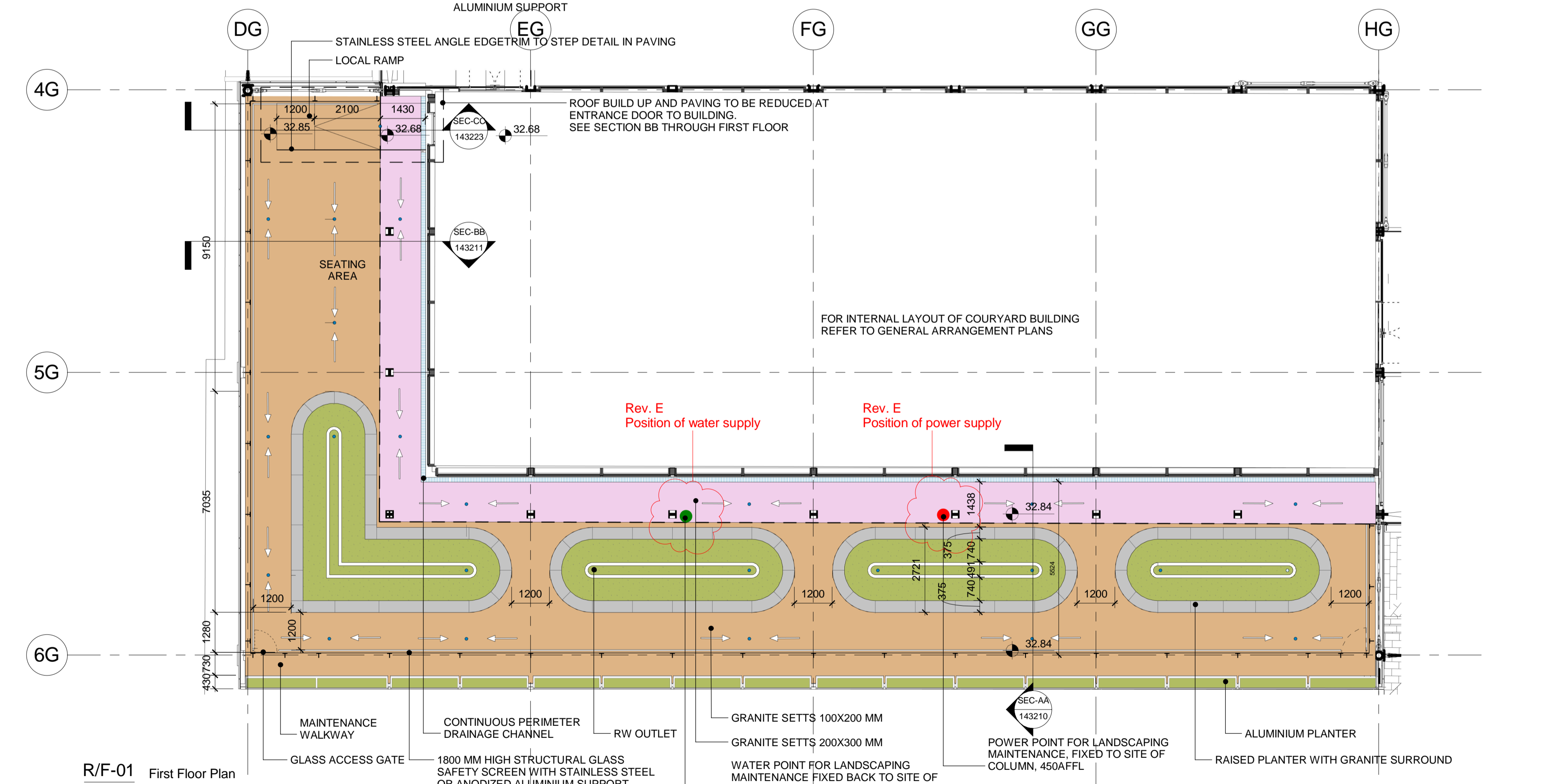
DRAWING TITLE

UCLH Phase 4 & PBT
Roof Package Location Plan

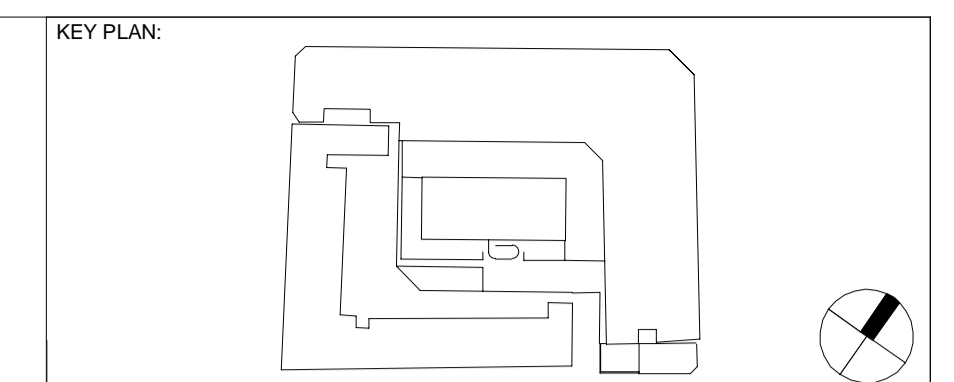
| PROJECT | ISSUER | AREA | LEVEL | TYPE | TRADE | SEQUENCE | REV |
|---------|--------|------|-------|------|-------|----------|-----|
| P4PBT | STW | AFA | RF | SOW | A31 | 143140 | D |



R/F-02 Third Floor Plan
143141 1:100



R/F-01 First Floor Plan
143141 1:100



- ROOF PACKAGE LEGEND**
- GRANITE SETTS 100MM x 200MM SEE SPECIFICATION Q25.1202
 - EXTENSIVE GREEN ROOF ON COMPOSITE DECK WITH INSULATION, SEE SPECIFICATION Q37.1200
 - EXTENSIVE GREEN ROOF ON COMPOSITE DECK WITHOUT INSULATION, SEE SPECIFICATION Q37.1200
 - GRANITE SETTS 200MM x 300MM SEE SPECIFICATION Q25.1202
 - MIN 40MM THICK GRANITE STONE CAPPING
 - SLOTTED TIMBER SEAT ON CONCRETE CLAD UPSTANDS SEE SPECIFICATION H42.1205
 - TIMBER SEATING ON STEEL FRAME
 - PEBBLES (GREY STONE) MIN 50MM DIM WASHED & ROUNDED SEE SPECIFICATION J31.2109
 - INTENSIVE GREEN ROOF PLANTING SEE SPECIFICATION Q37.1200
 - ROOF LIGHT SEE SPECIFICATION Z25.2115
 - SINGLE PIECE TRIANGULAR GRANITE SLAB TO MAKE CORNER SEE SPECIFICATION Q25.1202
 - LIGHT GREY FIBREGLASS FLOOR GRATING INFILLED WITH GRAVEL TO ALLOW DRAINAGE
 - 600X600 CONCRETE PAVING SLABS SEE SPECIFICATION J31.2107
 - UNINSULATED METAL DECK ROOFING SYSTEM ON STEEL STRUCTURE
 - GALVANIZED METAL CANOPY TO PROTECT LIFT DOORS
 - BARK MULCH
 - SLOT DRAIN
 - 1800MM HIGH STRUCTURAL GLASS
 - STAINLESS STEEL OR ANODIZED ALUMINIUM POST TO GLAZING SCREEN
 - RW OUTLET SEE SPECIFICATION Q10.2102
 - DIRECTIONS OF FALLS
 - GLASS ACCESS GATE
 - FALL ARREST SYSTEM
 - LOUVRES BETWEEN PV PANELS TO BE ACOUSTIC LOUVRES OR TO HAVE ATTENUATION BACK BOXES, AS REQUIRED IN THE ACOUSTIC REPORT. ALL LOUVRES (REGARDLESS OF ACOUSTIC RATING) ARE TO LOOK THE SAME EXTERNALLY
 - KEYLOCK ACCESS THROUGH PV PANEL, HINGED OPENABLE (REFER TO SECURITY DRAWINGS SEQUENCE 171000)
 - INDICATIVE POSITION OF POWER POINTS FOR LANDSCAPING MAINTENANCE
 - INDICATIVE POSITION OF WATER POINTS FOR LANDSCAPING MAINTENANCE
 - IRRIGATION SYSTEM TO BE DEVELOPED IN LINE WITH REVISED LANDSCAPING BRIEF FROM UCLH ONCE INSTRUCTED BY UCLH, TO BE REVIEW AND ACCEPTED BY INFECTION CONTROL

Rev. E Colour amended for clarity

Rev. E Finishes added to legend

Rev. E RW outlet added

Rev. E Note amended.

Rev. E Colour amended for clarity

Rev. E Colour amended for clarity

Rev. E Items added to legend

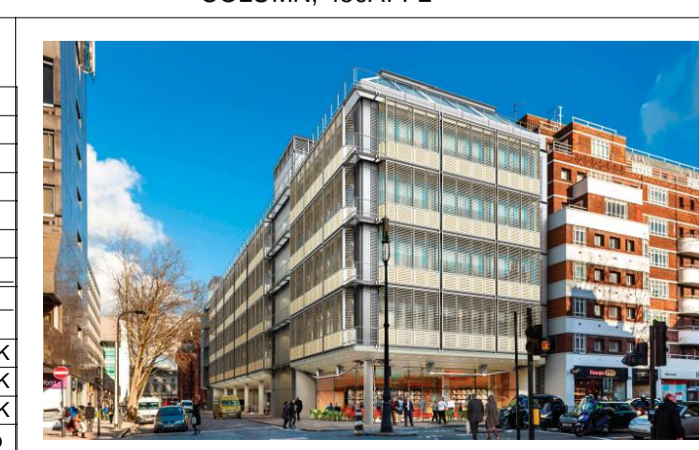
Rev. E Power and Water supplies added

NOTES:

| Rev | DATE | REVISION HISTORY | Dsg | Dw | Clk | App |
|-----|----------|--|-----|-----|------|------|
| E | 11.11.16 | 100% Stage E Issue | STW | BB | RM | KB |
| D | 01/08/16 | Updated to Byuk Comments and Issued for 90% Review | STW | BB | RM | KB |
| C | 18/07/16 | Issued For Tender | STW | STW | BYUK | BYUK |
| B | 06/07/16 | Issued For Facade and Roof Tender | STW | STW | BYUK | BYUK |
| A | 12/04/16 | Issued for 50% Review | STW | STW | BYUK | BYUK |

ALL REVISIONS

| Rev | DATE | REVISION HISTORY | Dsg | Dw | Clk | App |
|-----|----------|--|-----|-----|------|------|
| E | 11.11.16 | 100% Stage E Issue | STW | BB | RM | KB |
| D | 01/08/16 | Updated to Byuk Comments and Issued for 90% Review | STW | BB | RM | KB |
| C | 18/07/16 | Issued For Tender | STW | STW | BYUK | BYUK |
| B | 06/07/16 | Issued For Facade and Roof Tender | STW | STW | BYUK | BYUK |
| A | 12/04/16 | Issued for 50% Review | STW | STW | BYUK | BYUK |



BOUYGUES
Head Office:
Elizabeth House,
39 York Road,
London, SE1 7NG,
Tel: 020 7401 0020
Fax: 020 7401 0030
www.bouygues-uk.com

University College London Hospitals **NHS**
NHS Foundation Trust

ORIGINATOR
Scott Tallon Walker Architects

NG Bailey CampbellReith

ccrd h
VARIAN medical systems Particle Therapy

| Name | Signature | Date |
|-------------|-----------|------------|
| Designed by | STW | 2016/11/11 |
| Drawn by | BB | 2016/11/11 |
| Checked | RM | 2016/11/11 |
| Approved | KB | 2016/11/11 |

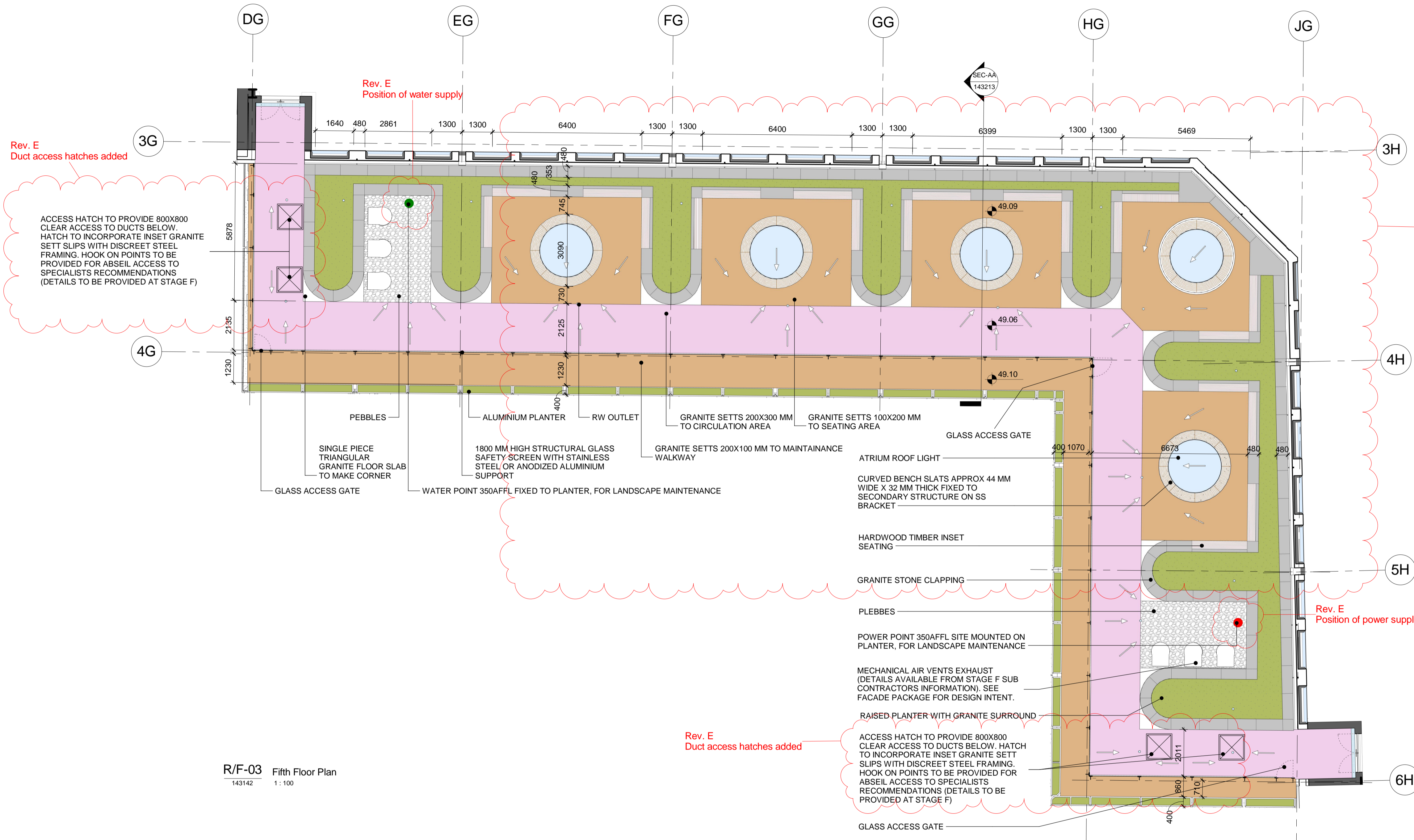
SCALE 1:100 @ A1 BIM FILE NAME P4PBT-STW-AFA-SL-M3-A31-100060

FIRST ISSUE DATE 2016/04/12 PROPOSED STATUS For Procurement

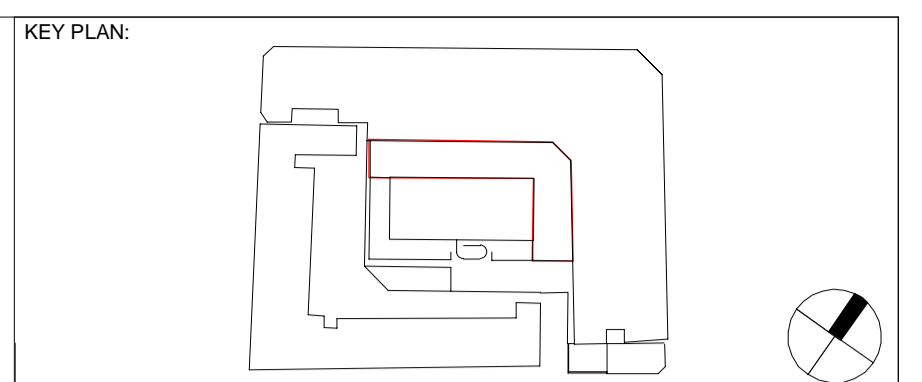
DRAWING TITLE

UCLH Phase 4 & PBT
Roof Package Plans - First and Third Floor
Level Courtyard Building

| PROJECT | ISSUER | AREA | LEVEL | TYPE | TRADE | SEQUENCE | REV |
|---------|--------|------|-------|------|-------|----------|-----|
| P4PBT | STW | AFA | SL | SOW | A31 | 143141 | E |



R/F-03 Fifth Floor Plan
143142 1:100



- ROOF PACKAGE LEGEND**
- GRANITE SETTS 100MM x 200MM SEE SPECIFICATION Q25.1202
 - EXTENSIVE GREEN ROOF ON COMPOSITE DECK WITH INSULATION, SEE SPECIFICATION Q37.1200
 - EXTENSIVE GREEN ROOF ON COMPOSITE DECK WITHOUT INSULATION, SEE SPECIFICATION Q37.1200
 - GRANITE SETTS 200MM x 300MM SEE SPECIFICATION Q25.1202
 - MIN 40MM THICK GRANITE STONE CAPPING
 - SLOTTED TIMBER SEAT ON CONCRETE CLAD UPSTANDS SEE SPECIFICATION H42.1205
 - TIMBER SEATING ON STEEL FRAME
 - PEBBLES (GREY STONE) MIN 50MM DIM WASHED & ROUNDED SEE SPECIFICATION J31.2109
 - INTENSIVE GREEN ROOF PLANTING SEE SPECIFICATION Q37.1200
 - ROOF LIGHT SEE SPECIFICATION Z25.2115
 - SINGLE PIECE TRIANGULAR GRANITE SLAB TO MAKE CORNER SEE SPECIFICATION Q25.1202
 - LIGHT GREY FIBREGLASS FLOOR GRATING INFILLED WITH GRAVEL TO ALLOW DRAINAGE
 - 600X600 CONCRETE PAVING SLABS SEE SPECIFICATION J31.2107
 - UNINSULATED METAL DECK ROOFING SYSTEM ON STEEL STRUCTURE
 - GALVANIZED METAL CANOPY TO PROTECT LIFT DOORS
 - BARK MULCH
 - SLOT DRAIN
 - 1800MM HIGH STRUCTURAL GLASS
 - STAINLESS STEEL OR ANODIZED ALUMINIUM POST TO GLAZING SCREEN
 - RW OUTLET SEE SPECIFICATION Q10.2102
 - DIRECTIONS OF FALLS
 - GLASS ACCESS GATE
 - FALL ARREST SYSTEM
 - LOUVRES BETWEEN PV PANELS TO BE ACOUSTIC LOUVRES OR TO HAVE ATTENUATION BACK BOXES, AS REQUIRED IN THE ACOUSTIC REPORT. ALL LOUVRES (REGARDLESS OF ACOUSTIC RATING) ARE TO LOOK THE SAME EXTERNALLY
 - KEYLOCK ACCESS THROUGH PV PANEL, HINGED OPENABLE (REFER TO SECURITY DRAWINGS SEQUENCE 171000)
 - INDICATIVE POSITION OF POWER POINTS FOR LANDSCAPING MAINTENANCE
 - INDICATIVE POSITION OF WATER POINTS FOR LANDSCAPING MAINTENANCE
 - IRRIGATION SYSTEM TO BE DEVELOPED IN LINE WITH REVISED LANDSCAPING BRIEF FROM UCLH ONCE INSTRUCTED BY UCLH, TO BE REVIEW AND ACCEPTED BY INFECTION CONTROL

Rev. E Colour amended for clarity

Rev. E Finishes added to legend

Rev. E Landscaping finishes updated

Rev. E Note amended.

Rev. E Colour amended for clarity

Rev. E Position of power supply

Rev. E Colour amended for clarity

Rev. E Items added to legend

Rev. E Power and Water supplies added

Rev. E Duct access hatches added

ACCESS HATCH TO PROVIDE 800X800 CLEAR ACCESS TO DUCTS BELOW. HATCH TO INCORPORATE INSET GRANITE SETT SLIPS WITH DISCREET STEEL FRAMING. HOOK ON POINTS TO BE PROVIDED FOR ABSEIL ACCESS TO SPECIALISTS RECOMMENDATIONS (DETAILS TO BE PROVIDED AT STAGE F)

Rev. E Duct access hatches added

ACCESS HATCH TO PROVIDE 800X800 CLEAR ACCESS TO DUCTS BELOW. HATCH TO INCORPORATE INSET GRANITE SETT SLIPS WITH DISCREET STEEL FRAMING. HOOK ON POINTS TO BE PROVIDED FOR ABSEIL ACCESS TO SPECIALISTS RECOMMENDATIONS (DETAILS TO BE PROVIDED AT STAGE F)

NOTES:

| Rev | DATE | REVISION HISTORY | Dsg | Drw | Chk | App |
|-----|----------|--|-----|-----|------|------|
| E | 11.11.16 | 100% Stage E Issue | STW | BB | RM | KB |
| D | 01/08/16 | Updated to Byuk Comments and Issued for 90% Review | STW | BB | MK | KB |
| C | 18/07/16 | Issued For Tender | STW | STW | BYJK | BYJK |
| B | 06/07/16 | Issued For Facade and Roof Tender | STW | STW | BYJK | BYJK |
| A | 12/04/16 | Issued for 50% Review | STW | STW | BYJK | BYJK |

ALL REVISIONS

| Rev | DATE | REVISION HISTORY | Dsg | Drw | Chk | App |
|-----|----------|--|-----|-----|------|------|
| E | 11.11.16 | 100% Stage E Issue | STW | BB | RM | KB |
| D | 01/08/16 | Updated to Byuk Comments and Issued for 90% Review | STW | BB | MK | KB |
| C | 18/07/16 | Issued For Tender | STW | STW | BYJK | BYJK |
| B | 06/07/16 | Issued For Facade and Roof Tender | STW | STW | BYJK | BYJK |
| A | 12/04/16 | Issued for 50% Review | STW | STW | BYJK | BYJK |



BOUYGUES

University College London Hospitals NHS Foundation Trust

Head Office:
Elizabeth House,
39 York Road,
London, SE1 7NG,
Tel: 020 7401 0020
Fax: 020 7401 0030
www.bouygues-uk.com

| Name | Signature | Date |
|-------------|-----------|----------|
| Designed by | STW | 11.11.16 |
| Drawn by | BB | 11.11.16 |
| Checked | RM | 11.11.16 |
| Approved | KB | 11.11.16 |

ORIGINATOR
Scott Tallon Walker Architects

NG Bailey CampbellReith

VARIAN medical systems Particle Therapy

SCALE 1:100 @ A1 BIM FILE NAME P4PBT-STW-AFA-SL-M3-A31-100060

FIRST ISSUE DATE 2016/04/12 PROPOSED STATUS For Procurement

DRAWING TITLE

UCLH Phase 4 & PBT
Roof Package Plan - Fifth Floor Level Atrium Roof

| PROJECT | ISSUER | AREA | LEVEL | TYPE | TRADE | SEQUENCE | REV |
|---------|--------|------|-------|------|-------|----------|-----|
| P4PBT | STW | AFA | 05 | SOW | A31 | 143142 | E |