

NEW THERMAL INSULATION TO CONTINUE MIN 500MM STRUCTURAL SLAB TO AVOID COLD BRIDGING WHERE KERB PREVENTS INSTALLATION. INSULATION SHALL BE INSTALLED IN ALTERNATIVE AREAS TO AVOID COLD BRIDGING (EG. UNDER GROUND LEVEL SLAB)

PAVEMENT OVER PREPARED RECYCLED SUB-BASE BEYOND SITE BOUNDARY. AFFECTED BY CONSTRUCTION WORKS TO BE REINSTATED TO MATCH EXISTING

EXISTING PAVEMENT BEYOND SCOPE OF WORKS TO BE RETAINED

YORKSTONE PAVING OVER PREPARED RECYCLED SUB-BASE SEE SPECIFICATION Q25.1201 TO BE GREEN GUIDE A/A+ RATED (830120032)

100MM X 200MM GRANITE SETTS, ON PREPARED RECYCLED SUB-BASE SEE SPECIFICATION Q25.1202

200MM X 300MM GRANITE SETTS ON PREPARED RECYCLED SUB-BASE SEE SPECIFICATION Q25.1202

200MM X 300MM GRANITE SETTS ON PREPARED RECYCLED SUB-BASE WITH DIFFERENT COLOR TO INDICATE PARKING ZONES SEE SPECIFICATION Q25.1202

200MM X 300MM GRANITE SETTS ON PREPARED RECYCLED SUB-BASE WITH ALTERNATING DARK AND LIGHT COLOURED BANDS TO INDICATE PEDESTRIAN CROSSING SEE SPECIFICATION Q25.1202

REINFORCED IN-SITU CONCRETE SLAB ON PREPARED RECYCLED SUB-BASE SEE STRUCTURAL ENGINEER'S SPECIFICATION TO BE GREEN GUIDE A/A+ RATED (830120024)

Grafton Way

Rev. D LENGTH OF DRAINAGE CHANNELS AMENDED

Rev. D LENGTH OF DRAINAGE CHANNELS AMENDED

NEW THERMAL INSULATION TO CONTINUE MIN 500MM BEYOND STRUCTURAL SLAB WHERE KERB PREVENTS INSTALLATION. INSULATION SHALL BE INSTALLED IN ALTERNATIVE AREAS TO AVOID COLD BRIDGING (EG. UNDER GROUND LEVEL SLAB)

OUTLINE OF TUNNEL LINK AT B1 LEVEL

METAL WORKS PACKAGE

BICYCLE WHEEL STOP

METAL WORKS PACKAGE

METAL WORKS PACKAGE

METAL WORKS PACKAGE

METAL WORKS PACKAGE

METAL WORKS PACKAGE

METAL WORKS PACKAGE

METAL WORKS PACKAGE

METAL WORKS PACKAGE

METAL WORKS PACKAGE

METAL WORKS PACKAGE

METAL WORKS PACKAGE

METAL WORKS PACKAGE

METAL WORKS PACKAGE

METAL WORKS PACKAGE

METAL WORKS PACKAGE

METAL WORKS PACKAGE

METAL WORKS PACKAGE

METAL WORKS PACKAGE

METAL WORKS PACKAGE

METAL WORKS PACKAGE

METAL WORKS PACKAGE

METAL WORKS PACKAGE

METAL WORKS PACKAGE

METAL WORKS PACKAGE

METAL WORKS PACKAGE

METAL WORKS PACKAGE

METAL WORKS PACKAGE

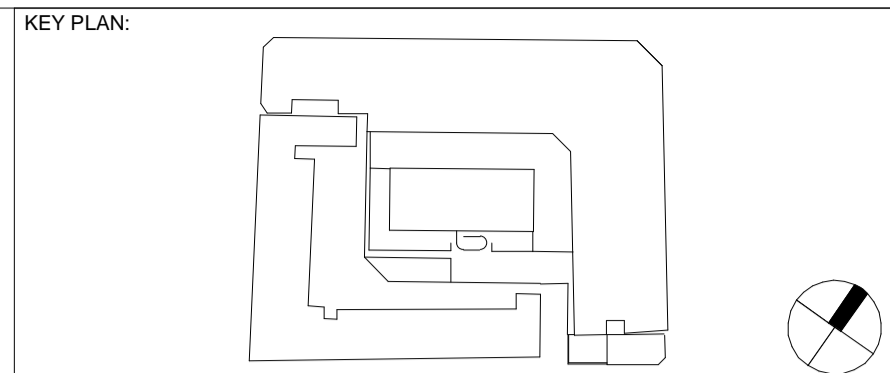
METAL WORKS PACKAGE

METAL WORKS PACKAGE

METAL WORKS PACKAGE

METAL WORKS PACKAGE

METAL WORKS PACKAGE



EXTERNAL WORKS LEGEND

- SITE BOUNDARY LINE
- OUTLINE OF EXISTING PARAMOUNT COURT BUILDING
- B1 TUNNEL
- EXISTING PAVEMENT BEYOND SCOPE OF WORKS TO BE RETAINED
- PAVEMENT OVER PREPARED RECYCLED SUB-BASE BEYOND BOUNDARY AFFECTED BY CONSTRUCTION WORKS TO BE REINSTATED TO MATCH EXISTING Q25.1201
- YORKSTONE PAVING SIZE TO MATCH EXISTING PAVING (min 75MM WIDTH) OVER PREPARED RECYCLED SUB-BASE SEE SPECIFICATION Q25.1201 TO BE GREEN GUIDE A/A+ RATED
- 200MM X 300MM X 75MM GRANITE SETTS ON PREPARED RECYCLED SUB-BASE SEE SPECIFICATION Q25.1202
- 200MM X 300MM X 75MM GRANITE SETTS ON PREPARED RECYCLED SUB-BASE WITH DIFFERENT COLOR TO INDICATE PEDESTRIAN ZONES SEE SPECIFICATION Q25.1202
- 100MM X 200MM X 75MM GRANITE SETTS, ON PREPARED RECYCLED SUB-BASE SEE SPECIFICATION Q25.1202
- 200MM X 300MM X 75MM GRANITE SETTS ON PREPARED RECYCLED SUB-BASE WITH DIFFERENT COLOR TO INDICATE PARKING ZONES SEE SPECIFICATION Q25.1202
- 200MM X 300MM X 75MM GRANITE SETTS ON PREPARED RECYCLED SUB-BASE WITH ALTERNATING DARK AND LIGHT COLOURED BANDS TO INDICATE PEDESTRIAN CROSSING SEE SPECIFICATION Q25.1202
- REINFORCED IN-SITU CONCRETE SLAB 150MM or 75MM SPEC REF Q25.1203 ON PREPARED RECYCLED SUB-BASE SEE STRUCTURAL ENGINEER'S SPECIFICATION TO BE GREEN GUIDE A/A+ RATED
- EXISTING ROAD SURFACE SPEC REF Q25.1204 BEYOND BOUNDARY AFFECTED BY CONSTRUCTION WORKS TO BE REINSTATED TO MATCH EXISTING
- GRANITE KERBS 600MM X 300MM X 150MM X 90MM SEE SPECIFICATION Q10.1203
- WHEEL BIKE STOP GRANITE KERBS 300MM X 200MM X 250MM SEE SPECIFICATION Q10.1203
- WHEEL CAR STOP GRANITE KERBS 300MM X 200 MM X 250MM SEE SPECIFICATION Q10.1203
- DIRECTION OF FALLS
- DRAINAGE CHANNEL TO BE INCORPORATED INTO NEW EXTERIOR FINISHES SEE SPECIFICATION Q10.1202
- DRAINAGE OUTLET SEE SPECIFICATION Q10.1202
- SHEFFIELD STAINLESS STEEL BIKE LOOPS SEE METAL WORKS PACKAGE
- STAINLESS STEEL BOLLARD SEE METAL WORKS PACKAGE
- STAINLESS STEEL RAILING SEE METAL WORKS PACKAGE
- CONTRASTING COLOUR FINISH TO MATERIAL TO DEFINE PEDESTRIAN / CYCLIST ACCESS ROUTE
- NEW THERMAL INSULATION TO CONTINUE MIN 500MM BEYOND STRUCTURAL SLAB WHERE KERB PREVENTS INSTALLATION. INSULATION SHALL BE INSTALLED IN ALTERNATIVE AREAS TO AVOID COLD BRIDGING (EG. UNDER GROUND LEVEL SLAB)

NOTE: GATES AND FENCE REFER TO METAL WORKS PACKAGE REFER TO ROOF PACKAGE FOR DETAILS OF EXTERIOR FINISHES TO UPPER LEVELS

Tottenham Court Road

Huntley Street

University Street

EXT 01 143570 - Ground Floor Plan 1:200

NOTES:
SUB CONTRACTOR TO ENSURE PAVING JOINTS ARE REDUCED TO A MINIMUM IN DROP OFF AREA TO ALLOW FOR EASE OF MOVEMENT FOR PATIENT TRANSFER TROLLEYS / WHEELCHAIR ETC.

Rev	DATE	REVISION HISTORY	Dsg	Drw	Chk	App
D	2016.11.15	Issued For Procurement - 100% Stage E Issue	STW	FL	KK	KB
C	2016/09/09	S1 - Issued For Coordination / 90% Review / Includes BYJK comments	STW	BB	KK	KB
B	2016/08/26	S1-Issued for Coordination / 90% Review	STW	BB	KK	KB
A	12/04/16	Issued for 50% Review	STW	STW	BYJK	BYJK



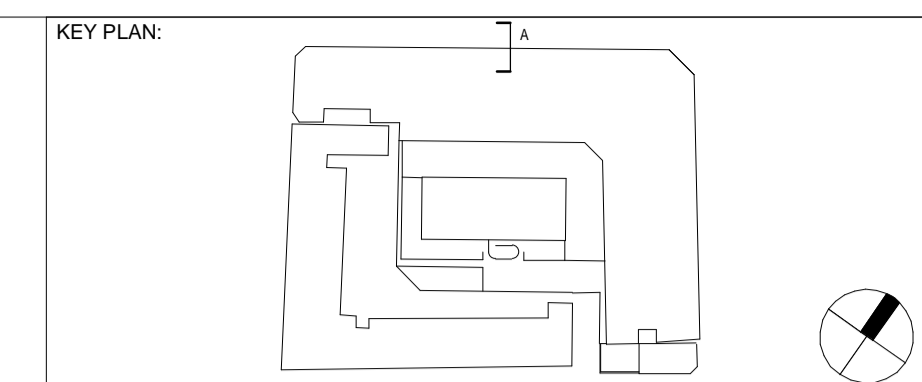
BOUYGUES
Head Office:
Elizabeth House,
39 York Road,
London, SE1 7NG,
Tel: 020 7401 0020
Fax: 020 7401 0030
www.bouygues-uk.com

Name	Signature	Date
Designed by	STW	2016.11.15
Drawn by	FL	2016.11.15
Checked	KK	2016.11.15
Approved	KB	2016.11.15

ORIGINATOR
Scott Tallon Walker Architects
NG Bailey CampbellReith
VARIAN Particle Therapy
SCALE: 1:200
@ A1 BIM FILE NAME: P4PBT-STW-AFA-SL-M3-A31-100060
FIRST ISSUE DATE: 2016/04/12
PROPOSED STATUS: For Procurement

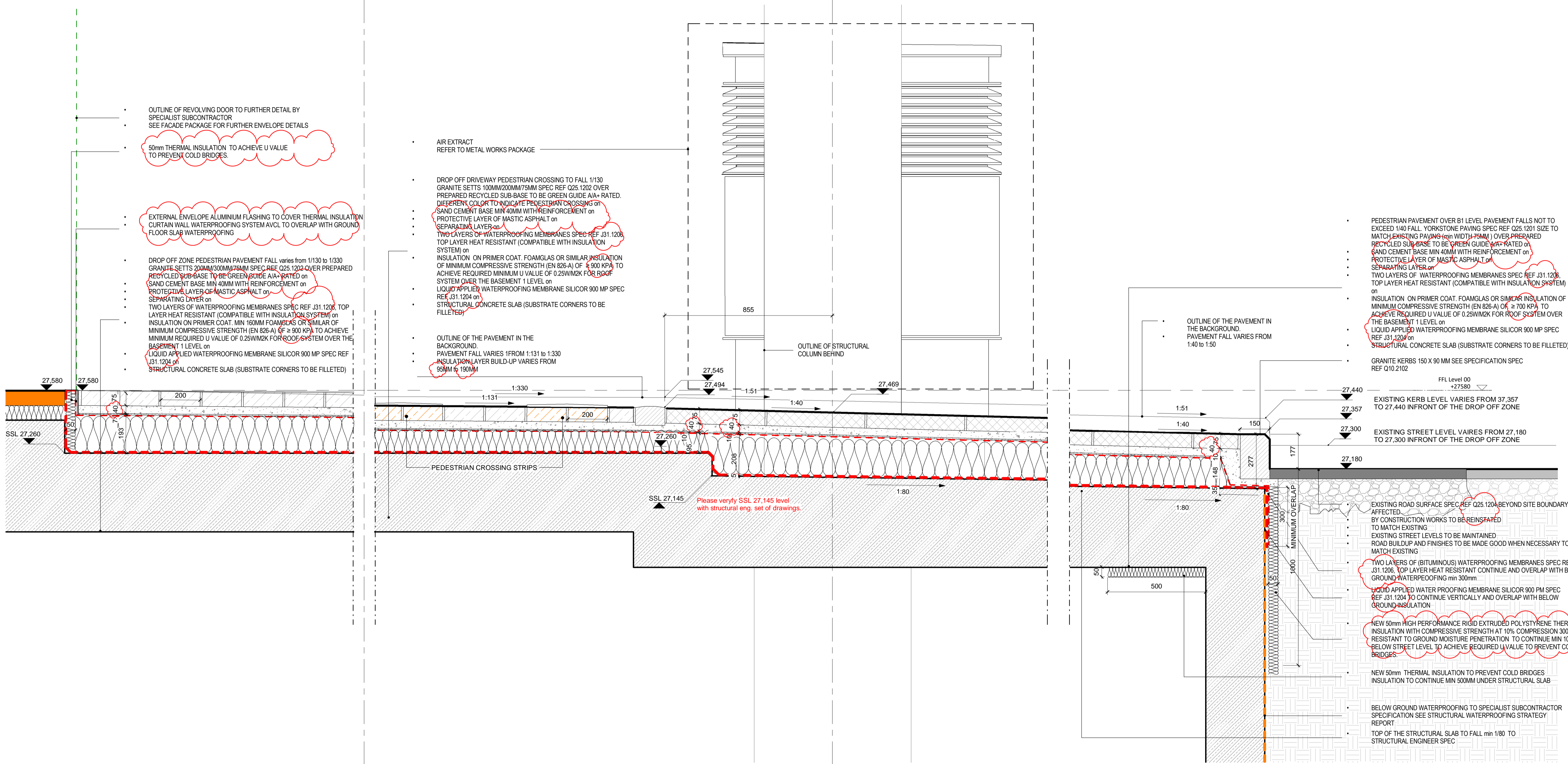
PROJECT	ISSUER	AREA	LEVEL	TYPE	TRADE	SEQUENCE	REV
P4PBT	STW	AFA	GND	SOW	A31	143570	D

DRAWING TITLE: UCLH Phase 4 & PBT External Works-Ground Floor Plan



2G

1G



OUTLINE OF REVOLVING DOOR TO FURTHER DETAIL BY SPECIALIST SUBCONTRACTOR SEE FACADE PACKAGE FOR FURTHER ENVELOPE DETAILS

50mm THERMAL INSULATION TO ACHIEVE U VALUE TO PREVENT COLD BRIDGES

EXTERNAL ENVELOPE ALUMINIUM FLASHING TO COVER THERMAL INSULATION CURTAIN WALL WATERPROOFING SYSTEM AVCL TO OVERLAP WITH GROUND FLOOR SLAB WATERPROOFING

DROP OFF ZONE PEDESTRIAN PAVEMENT FALL VARIES FROM 1/130 TO 1/330 GRANITE SETTS 200MM/300MM/75MM SPEC REF Q25.1202 OVER PREPARED RECYCLED SUB-BASE TO BE GREEN GUIDE A/A+ RATED on SAND CEMENT BASE MIN 40MM WITH REINFORCEMENT on PROTECTIVE LAYER OF MASTIC ASPHALT on SEPARATING LAYER on TWO LAYERS OF WATERPROOFING MEMBRANES SPEC REF J31.1206 TOP LAYER HEAT RESISTANT (COMPATIBLE WITH INSULATION SYSTEM) on INSULATION ON PRIMER COAT. MIN 160MM FOAMGLAS OR SIMILAR OF MINIMUM COMPRESSIVE STRENGTH (EN 826-A) OF ≥ 900 KPa TO ACHIEVE REQUIRED U VALUE OF 0.25W/M2K FOR ROOF SYSTEM OVER THE BASEMENT 1 LEVEL on LIQUID APPLIED WATERPROOFING MEMBRANE SILICOR 900 MP SPEC REF J31.1204 on STRUCTURAL CONCRETE SLAB (SUBSTRATE CORNERS TO BE FILLETED)

AIR EXTRACT REFER TO METAL WORKS PACKAGE

DROP OFF DRIVEWAY PEDESTRIAN CROSSING TO FALL 1/130 GRANITE SETTS 100MM/200MM/75MM SPEC REF Q25.1202 OVER PREPARED RECYCLED SUB-BASE TO BE GREEN GUIDE A/A+ RATED. DIFFERENT COLOR TO INDICATE PEDESTRIAN CROSSING on SAND CEMENT BASE MIN 40MM WITH REINFORCEMENT on PROTECTIVE LAYER OF MASTIC ASPHALT on SEPARATING LAYER on TWO LAYERS OF WATERPROOFING MEMBRANES SPEC REF J31.1206 TOP LAYER HEAT RESISTANT (COMPATIBLE WITH INSULATION SYSTEM) on INSULATION ON PRIMER COAT. FOAMGLAS OR SIMILAR INSULATION OF MINIMUM COMPRESSIVE STRENGTH (EN 826-A) OF ≥ 900 KPa TO ACHIEVE REQUIRED MINIMUM U VALUE OF 0.25W/M2K FOR ROOF SYSTEM OVER THE BASEMENT 1 LEVEL on LIQUID APPLIED WATERPROOFING MEMBRANE SILICOR 900 MP SPEC REF J31.1204 on STRUCTURAL CONCRETE SLAB (SUBSTRATE CORNERS TO BE FILLETED)

OUTLINE OF THE PAVEMENT IN THE BACKGROUND. PAVEMENT FALL VARIES FROM 1/131 TO 1/330 INSULATION LAYER BUILD-UP VARIES FROM 85MM TO 190MM

OUTLINE OF THE PAVEMENT IN THE BACKGROUND. PAVEMENT FALL VARIES FROM 1/40 TO 1/50

PEDESTRIAN PAVEMENT OVER B1 LEVEL PAVEMENT FALLS NOT TO EXCEED 1/40 FALL. YORKSTONE PAVING SPEC REF Q25.1201 SIZE TO MATCH EXISTING PAVING (min WIDTH 75MM) OVER PREPARED RECYCLED SUB-BASE TO BE GREEN GUIDE A/A+ RATED on SAND CEMENT BASE MIN 40MM WITH REINFORCEMENT on PROTECTIVE LAYER OF MASTIC ASPHALT on SEPARATING LAYER on TWO LAYERS OF WATERPROOFING MEMBRANES SPEC REF J31.1206 TOP LAYER HEAT RESISTANT (COMPATIBLE WITH INSULATION SYSTEM) on INSULATION ON PRIMER COAT. FOAMGLAS OR SIMILAR INSULATION OF MINIMUM COMPRESSIVE STRENGTH (EN 826-A) OF ≥ 700 KPa TO ACHIEVE REQUIRED U VALUE OF 0.25W/M2K FOR ROOF SYSTEM OVER THE BASEMENT 1 LEVEL on LIQUID APPLIED WATERPROOFING MEMBRANE SILICOR 900 MP SPEC REF J31.1204 on STRUCTURAL CONCRETE SLAB (SUBSTRATE CORNERS TO BE FILLETED)

GRANITE KERBS 150 X 90 MM SEE SPECIFICATION SPEC REF Q10.2102

FFL Level 00 +27.580

EXISTING KERB LEVEL VARIES FROM 37.357 TO 27.440 IN FRONT OF THE DROP OFF ZONE

EXISTING STREET LEVEL VARIES FROM 27.180 TO 27.300 IN FRONT OF THE DROP OFF ZONE

EXISTING ROAD SURFACE SPEC REF Q25.1204 BEYOND SITE BOUNDARY AFFECTED BY CONSTRUCTION WORKS TO BE REINSTATED TO MATCH EXISTING

EXISTING STREET LEVELS TO BE MAINTAINED ROAD BUILDUP AND FINISHES TO BE MADE GOOD WHEN NECESSARY TO MATCH EXISTING

TWO LAYERS OF (BITUMINOUS) WATERPROOFING MEMBRANES SPEC REF J31.1206 TOP LAYER HEAT RESISTANT CONTINUE AND OVERLAP WITH BELOW GROUND WATERPROOFING min 300mm

LIQUID APPLIED WATER PROOFING MEMBRANE SILICOR 900 MP SPEC REF J31.1204 TO CONTINUE VERTICALLY AND OVERLAP WITH BELOW GROUND INSULATION

NEW 50mm HIGH PERFORMANCE RIGID EXTRUDED POLYSTYRENE THERMAL INSULATION WITH COMPRESSIVE STRENGTH AT 10% COMPRESSION 300 KPa RESISTANT TO GROUND MOISTURE PENETRATION TO CONTINUE MIN 1000MM BELOW STREET LEVEL TO ACHIEVE REQUIRED U VALUE TO PREVENT COLD BRIDGES

NEW 50mm THERMAL INSULATION TO PREVENT COLD BRIDGES INSULATION TO CONTINUE MIN 500MM UNDER STRUCTURAL SLAB

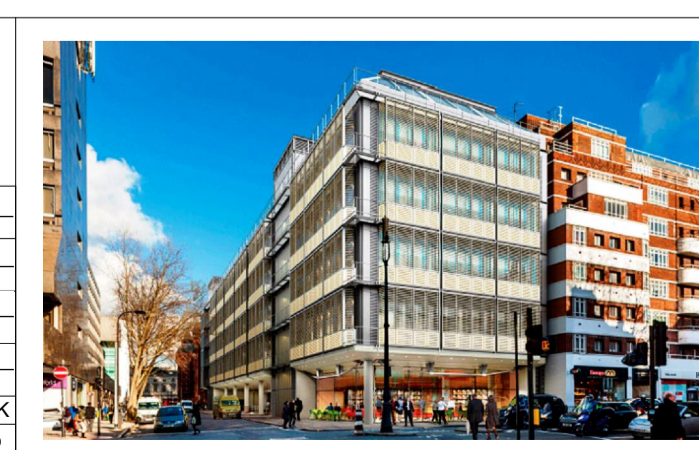
BELOW GROUND WATERPROOFING TO SPECIALIST SUBCONTRACTOR SPECIFICATION SEE STRUCTURAL WATERPROOFING STRATEGY REPORT

TOP OF THE STRUCTURAL SLAB TO FALL min 1/80 TO STRUCTURAL ENGINEER SPEC

SEC-AA External Works Section AA Drop of Zone
143701 1:10

NOTES:
SUB CONTRACTOR TO ENSURE PAVING JOINTS ARE REDUCED TO A MINIMUM IN DROP OFF AREA TO ALLOW FOR EASE OF MOVEMENT FOR PATIENT TRANSFER TROLLEYS / WHEELCHAIR ETC.

ALL REVISIONS						
Rev	DATE	REVISION HISTORY	Dsg	Drw	Chk	App
E	2016.11.15	Issued For Procurement - 100% Stage E Issue	STW	FL	KK	KB
D	2016.10.03	S1 - Issued For Coordination / Dimensions and SSL clarified	STW	KK	KK	KB
C	2016/09/03	S1 - Issued For Coordination / 90% Review / Includes BYJK comments	STW	BB	KK	KB
B	2016/08/26	S1 - Issued for Coordination / 90% Review	STW	BB	KK	KB
A	12/04/16	Issued for 50% Review	STW	STW	BYJK	BYJK



BOUYGUES
Head Office:
Elizabeth House,
39 York Road,
London, SE1 7NG,
Tel: 020 7401 0020
Fax: 020 7401 0030
www.bouygues-uk.com

University College London Hospitals NHS Foundation Trust

Name	Signature	Date
Designed by	STW	2016.11.15
Drawn by	FL	2016.11.15
Checked	KK	2016.11.15
Approved	KB	2016.11.15

ORIGINATOR
Scott Tallon Walker Architects

NG Bailey CampbellReith

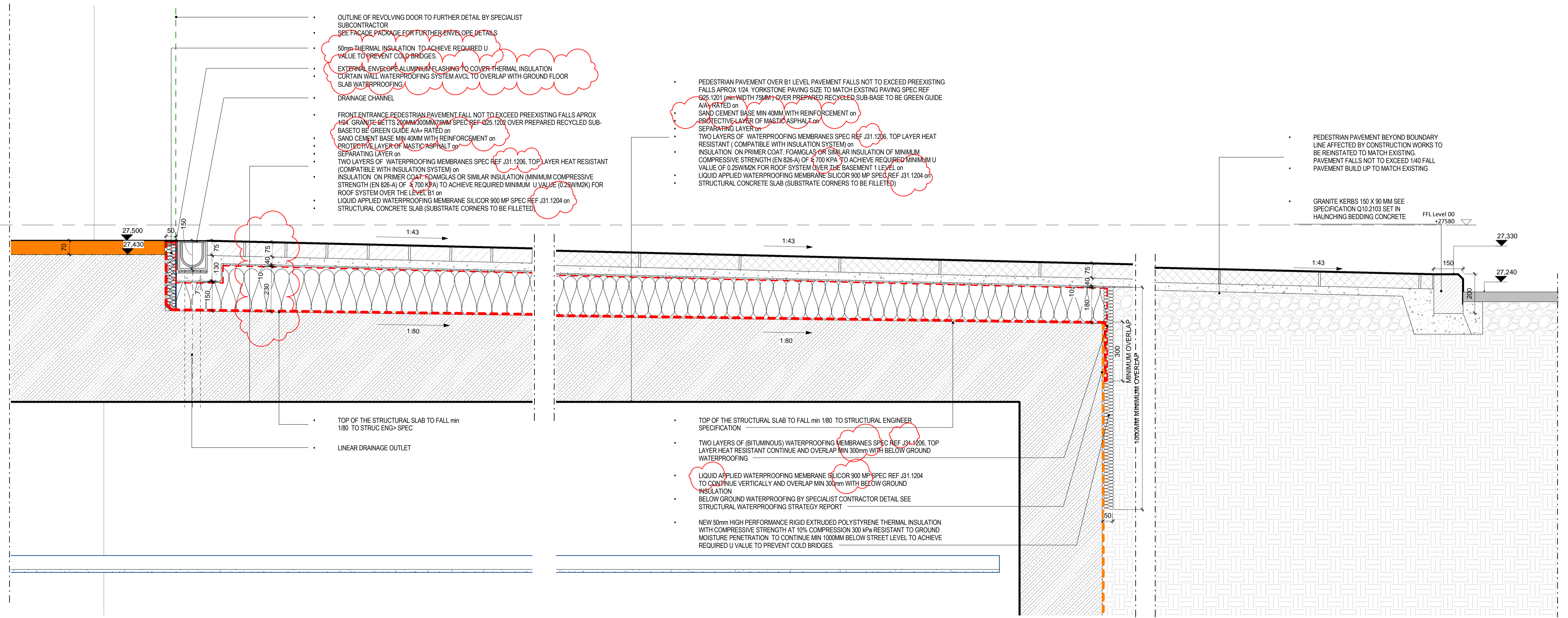
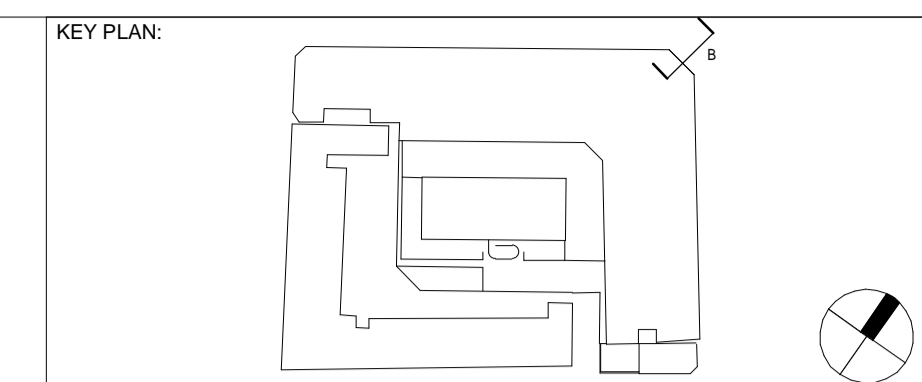
VARIAN medical systems | Particle Therapy

SCALE: 1:10 @ A1
BIM FILE NAME: P4PBT-STW-AFA-SL-M3-A31-100060

FIRST ISSUE DATE: 2016/04/12
PROPOSED STATUS: For Procurement

DRAWING TITLE: UCLH Phase 4 & PBT External Works Section AA

PROJECT	ISSUER	AREA	LEVEL	TYPE	TRADE	SEQUENCE	REV
P4PBT	STW	AFA	GND	SEC	A31	143701	E



- OUTLINE OF REVOLVING DOOR TO FURTHER DETAIL BY SPECIALIST SUBCONTRACTOR
- SEE FACADE PACKAGE FOR FURTHER ENVELOPE DETAILS
- 50mm THERMAL INSULATION TO ACHIEVE REQUIRED U VALUE TO PREVENT COLD BRIDGES
- EXTERNAL ENVELOPE ALUMINIUM FLASHING TO COVER THERMAL INSULATION CURTAIN WALL WATERPROOFING SYSTEM AVCL TO OVERLAP WITH GROUND FLOOR SLAB WATERPROOFING
- DRAINAGE CHANNEL
- FRONT ENTRANCE PEDESTRIAN PAVEMENT FALL NOT TO EXCEED PREEXISTING FALLS APPROX 1/24 GRANITE KERBS 200MM X 90MM X 75MM SPEC REF Q25.1204 OVER PREPARED RECYCLED SUB-BASE TO BE GREEN GUIDE A/A+ RATED on SAND CEMENT BASE MIN 40MM WITH REINFORCEMENT on PROTECTIVE LAYER OF MASTIC ASPHALT on SEPARATING LAYER on TWO LAYERS OF WATERPROOFING MEMBRANES SPEC REF J31.1206 TOP LAYER HEAT RESISTANT (COMPATIBLE WITH INSULATION SYSTEM) on INSULATION ON PRIMER COAT FOAMGLAS OR SIMILAR INSULATION (MINIMUM COMPRESSIVE STRENGTH (EN 826-A) OF 4 700 KPa) TO ACHIEVE REQUIRED MINIMUM U VALUE (0.25W/M2K) FOR ROOF SYSTEM OVER THE LEVEL B1 on LIQUID APPLIED WATERPROOFING MEMBRANE SILICOR 900 MP SPEC REF J31.1204 on STRUCTURAL CONCRETE SLAB (SUBSTRATE CORNERS TO BE FILLETED)

- PEDESTRIAN PAVEMENT OVER B1 LEVEL PAVEMENT FALLS NOT TO EXCEED PREEXISTING FALLS APPROX 1/24 YORKSTONE PAVING SIZE TO MATCH EXISTING PAVING SPEC REF Q25.1201 (MIN WIDTH 75MM) OVER PREPARED RECYCLED SUB-BASE TO BE GREEN GUIDE A/A+ RATED on SAND CEMENT BASE MIN 40MM WITH REINFORCEMENT on PROTECTIVE LAYER OF MASTIC ASPHALT on SEPARATING LAYER on TWO LAYERS OF WATERPROOFING MEMBRANES SPEC REF J31.1206 TOP LAYER HEAT RESISTANT (COMPATIBLE WITH INSULATION SYSTEM) on INSULATION ON PRIMER COAT FOAMGLAS OR SIMILAR INSULATION (MINIMUM COMPRESSIVE STRENGTH (EN 826-A) OF 4 700 KPa) TO ACHIEVE REQUIRED MINIMUM U VALUE (0.25W/M2K) FOR ROOF SYSTEM OVER THE LEVEL B1 on LIQUID APPLIED WATERPROOFING MEMBRANE SILICOR 900 MP SPEC REF J31.1204 on STRUCTURAL CONCRETE SLAB (SUBSTRATE CORNERS TO BE FILLETED)

- PEDESTRIAN PAVEMENT BEYOND BOUNDARY LINE AFFECTED BY CONSTRUCTION WORKS TO BE REINSTATED TO MATCH EXISTING PAVEMENT FALLS NOT TO EXCEED 1/40 FALL PAVEMENT BUILD UP TO MATCH EXISTING

GRANITE KERBS 150 X 90 MM SEE SPECIFICATION Q10.2103 SET IN HAUNCHING BEDDING CONCRETE FFL Level 00 +27580

TOP OF THE STRUCTURAL SLAB TO FALL min 1/80 TO STRUC ENG> SPEC
LINEAR DRAINAGE OUTLET

- TOP OF THE STRUCTURAL SLAB TO FALL min 1/80 TO STRUCTURAL ENGINEER SPECIFICATION
- TWO LAYERS OF (BITUMINOUS) WATERPROOFING MEMBRANES SPEC REF J31.1206 TOP LAYER HEAT RESISTANT CONTINUE AND OVERLAP MIN 300mm WITH BELOW GROUND WATERPROOFING
- LIQUID APPLIED WATERPROOFING MEMBRANE SILICOR 900 MP SPEC REF J31.1204 TO CONTINUE VERTICALLY AND OVERLAP MIN 300mm WITH BELOW GROUND INSULATION
- BELOW GROUND WATERPROOFING BY SPECIALIST CONTRACTOR DETAIL SEE STRUCTURAL WATERPROOFING STRATEGY REPORT
- NEW 50mm HIGH PERFORMANCE RIGID EXTRUDED POLYSTYRENE THERMAL INSULATION WITH COMPRESSIVE STRENGTH AT 10% COMPRESSION 300 kPa RESISTANT TO GROUND MOISTURE PENETRATION TO CONTINUE MIN 1000MM BELOW STREET LEVEL TO ACHIEVE REQUIRED U VALUE TO PREVENT COLD BRIDGES

SEC-BB External Works-Grafton Way and Huntley Street Entrance
143702 1 : 10

NOTES:

Rev	DATE	REVISION HISTORY	Dsg	Drw	Chk	App
C	2016.11.15	Issued For Procurement - 100% Stage E Issue	STW	FL	KK	KB
B	2016/09/03	S1 - Issued For Coordination / 90% Review / Includes BYUK comments	STW	BB	KK	KB
A	2016/08/26	S1-Issued for Coordination / 90% Review	STW	BB	KK	KB

ALL REVISIONS

Rev	DATE	REVISION HISTORY	Dsg	Drw	Chk	App
C	2016.11.15	Issued For Procurement - 100% Stage E Issue	STW	FL	KK	KB
B	2016/09/03	S1 - Issued For Coordination / 90% Review / Includes BYUK comments	STW	BB	KK	KB
A	2016/08/26	S1-Issued for Coordination / 90% Review	STW	BB	KK	KB



BOUYGUES
Head Office:
Elizabeth House,
39 York Road,
London, SE1 7NG,
Tel: 020 7401 0020
Fax: 020 7401 0030
www.bouygues-uk.com

University College London Hospitals NHS Foundation Trust

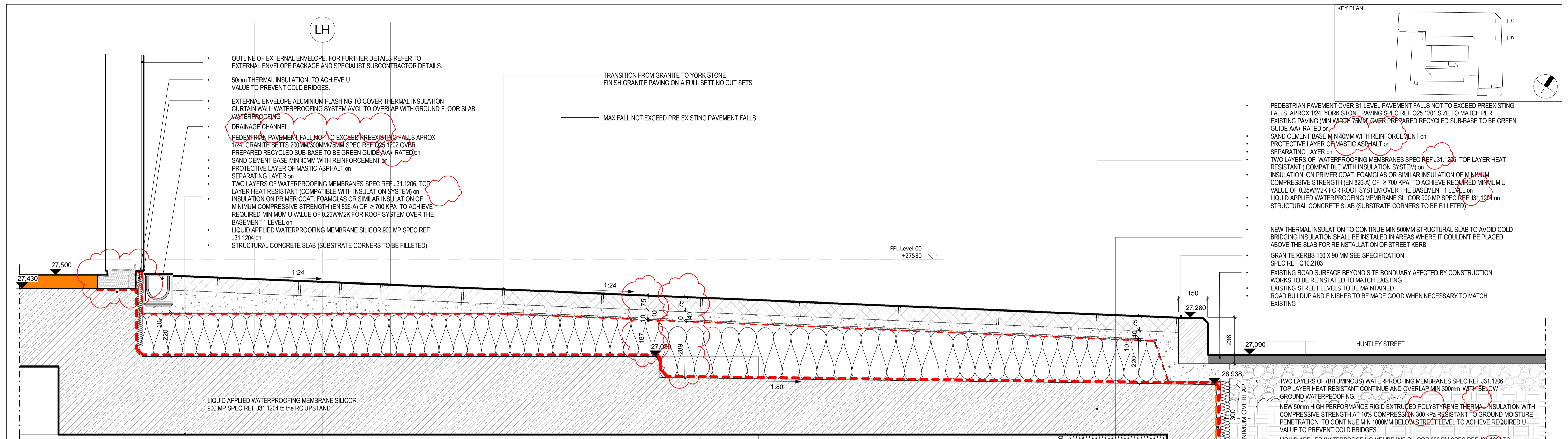
Name	Signature	Date
Designed by	STW	2016.11.15
Drawn by	FL	2016.11.15
Checked	KK	2016.11.15
Approved	KB	2016.11.15

ORIGINATOR
Scott Tallon Walker Architects
NG Bailey CampbellReith
VARIAN medical systems Particle Therapy

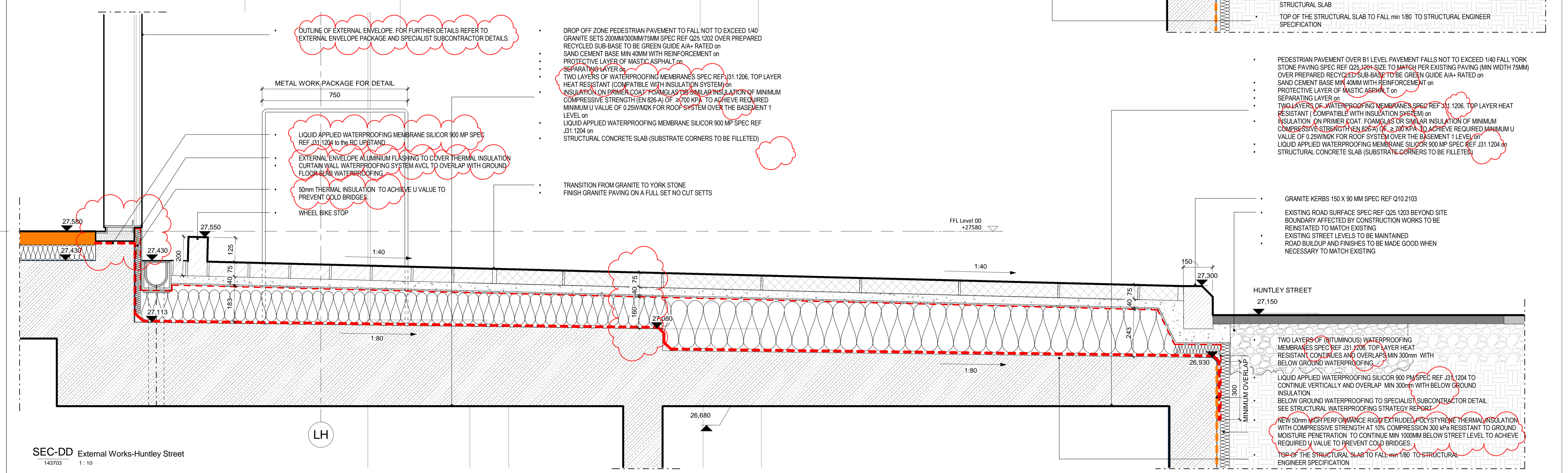
SCALE: 1 : 10 @ A1
BIM FILE NAME: P4PBT-STW-AFA-SL-M3-A31-100060
FIRST ISSUE DATE: 2016/04/12
PROPOSED STATUS: For Procurement

DRAWING TITLE
UCLH Phase 4 & PBT
External Works Section BB

PROJECT	ISSUER	AREA	LEVEL	TYPE	TRADE	SEQUENCE	REV
P4PBT	STW	AFA	GND	SEC	A31	143702	C



SEC-CC External Works-Grafton Way and Huntley Street Entrance
143703 1:10



SEC-DD External Works-Huntley Street
143703 1:10

NOTES:

Rev	DATE	REVISION HISTORY	Dsg	Drw	Chk	App
D	2016.11.15	Issued For Procurement - 100% Stage E Issue	STW	FL	KK	KB
C	2016/09/03	S1 - Issued For Coordination / 90% Review / Includes BYJK comments	STW	BB	KK	KB
B	2016/08/26	S1-Issued for Coordination / 90% Review	STW	BB	KK	KB
A	12/04/16	Issued for 50% Review	STW	STW	BYJK	BYJK

ALL REVISIONS

Rev	DATE	REVISION HISTORY	Dsg	Drw	Chk	App
D	2016.11.15	Issued For Procurement - 100% Stage E Issue	STW	FL	KK	KB
C	2016/09/03	S1 - Issued For Coordination / 90% Review / Includes BYJK comments	STW	BB	KK	KB
B	2016/08/26	S1-Issued for Coordination / 90% Review	STW	BB	KK	KB
A	12/04/16	Issued for 50% Review	STW	STW	BYJK	BYJK



BOUYGUES
Head Office:
Elizabeth House,
39 York Road,
London, SE1 7NG,
Tel: 020 7401 0020
Fax: 020 7401 0030
www.bouygues-uk.com

University College London Hospitals NHS Foundation Trust

Name	Signature	Date
Designed by	STW	2016.11.15
Drawn by	FL	2016.11.15
Checked	KK	2016.11.15
Approved	KB	2016.11.15

ORIGINATOR
Scott Tallon Walker Architects

NG Bailey CampbellReith

VARIAN medical systems Particle Therapy

SCALE: 1:10 @ A1

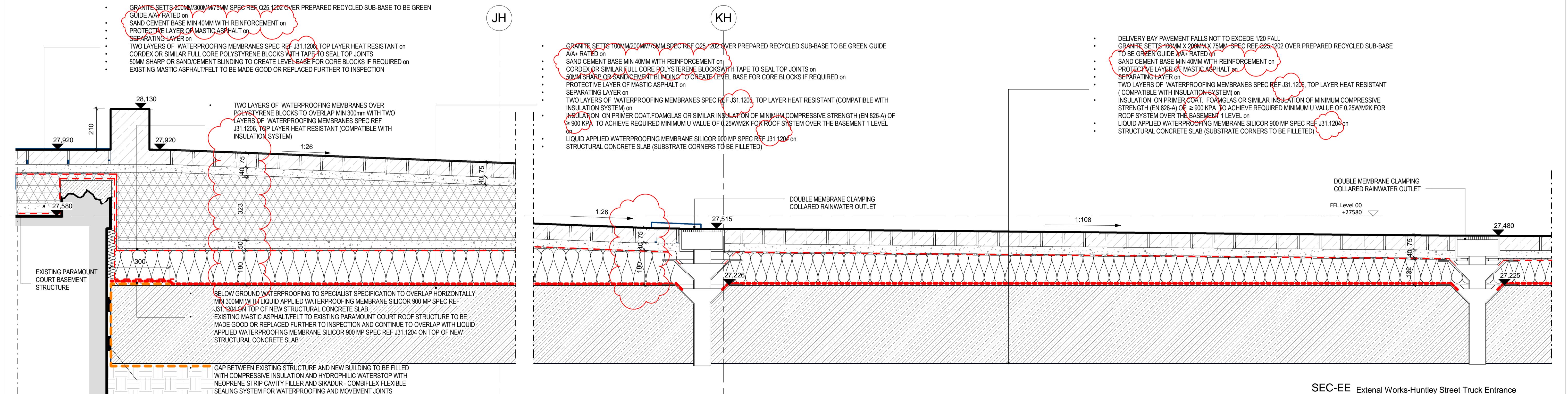
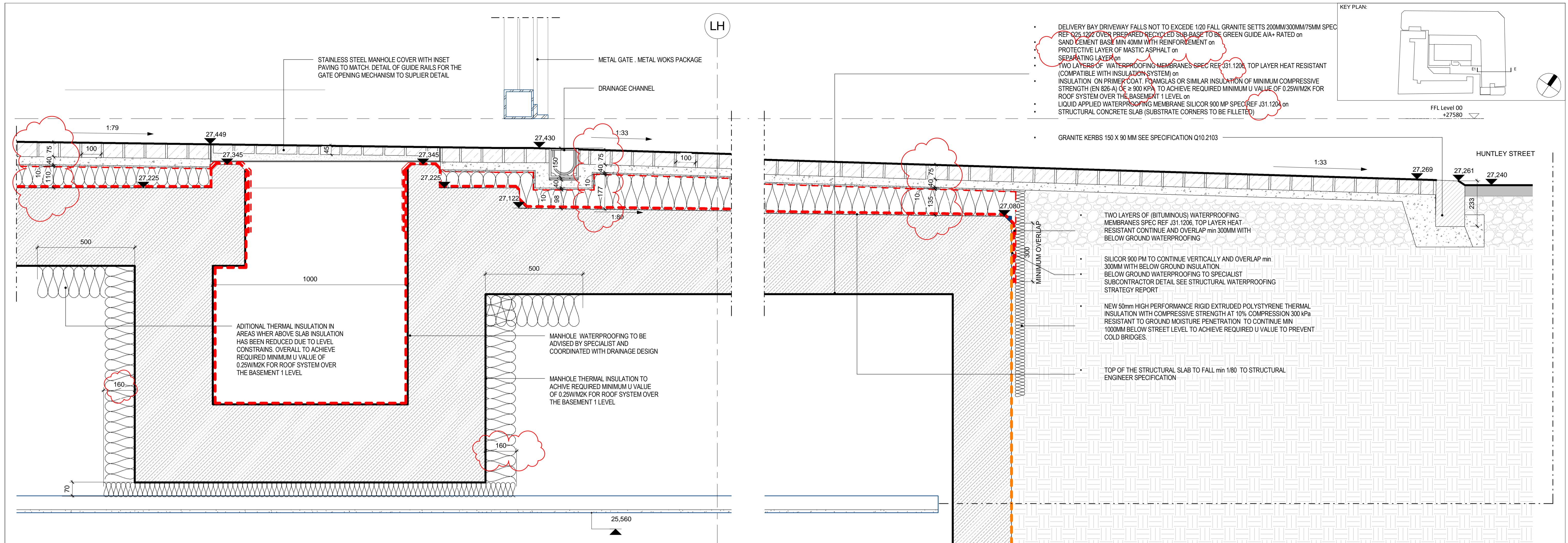
BIM FILE NAME: P4PBT-STW-AFA-SL-M3-A31-100060

FIRST ISSUE DATE: 2016/04/12

PROPOSED STATUS: For Procurement

DRAWING TITLE: UCLH Phase 4 & PBT External Works Section CC DD

PROJECT	ISSUER	AREA	LEVEL	TYPE	TRADE	SEQUENCE	REV
P4PBT	STW	AFA	GND	SEC	A31	143703	D

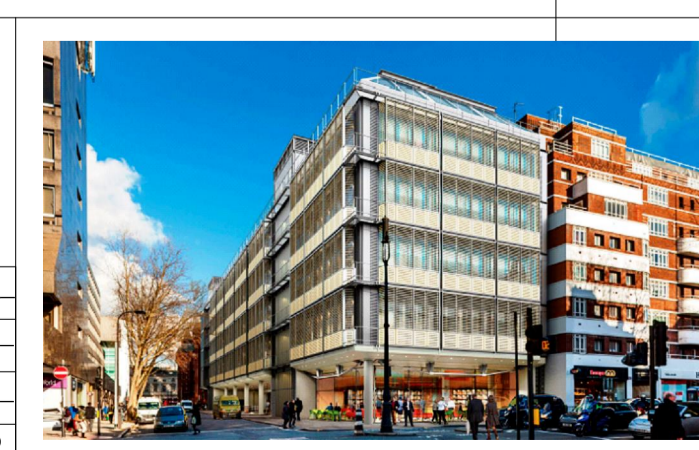


NOTES:

CONTRASTING COLOUR FINISH TO SLAB TO DEFINE PEDESTRIAN / CYCLIST ACCESS ROUTE PLEASE REFER TO 143570 - EXTERNAL WORKS GROUND FLOOR PLAN

ALL REVISIONS

Rev	DATE	REVISION HISTORY	Dsg	Drw	Chk	App
C	2016.11.15	Issued For Procurement - 100% Stage E Issue	STW	FL	KK	KB
B	2016/09/03	S1 - Issued For Coordination / 90% Review / Includes BYUK comments	STW	BB	KK	KB
A	2016/08/26	S1-Issued for Coordination / 90% Review	STW	BB	KK	KB



BOUYGUES

Head Office:
Elizabeth House,
39 York Road,
London, SE1 7NQ,
Tel: 020 7401 0020
Fax: 020 7401 0030
www.bouygues-uk.com

University College London Hospitals NHS Foundation Trust

Name	Signature	Date
Designed by	STW	2016.11.15
Drawn by	FL	2016.11.15
Checked	KK	2016.11.15
Approved	KB	2016.11.15

ORIGINATOR
Scott Tallon Walker Architects

NG Bailey CampbellReith

VARIAN Particle Therapy

SCALE 1:10 @ A1

BIM FILE NAME P4PBT-STW-AFA-SL-M3-A31-100060

FIRST ISSUE DATE 2016/04/12

PROPOSED STATUS For Procurement

SEC-EE External Works-Huntley Street Truck Entrance

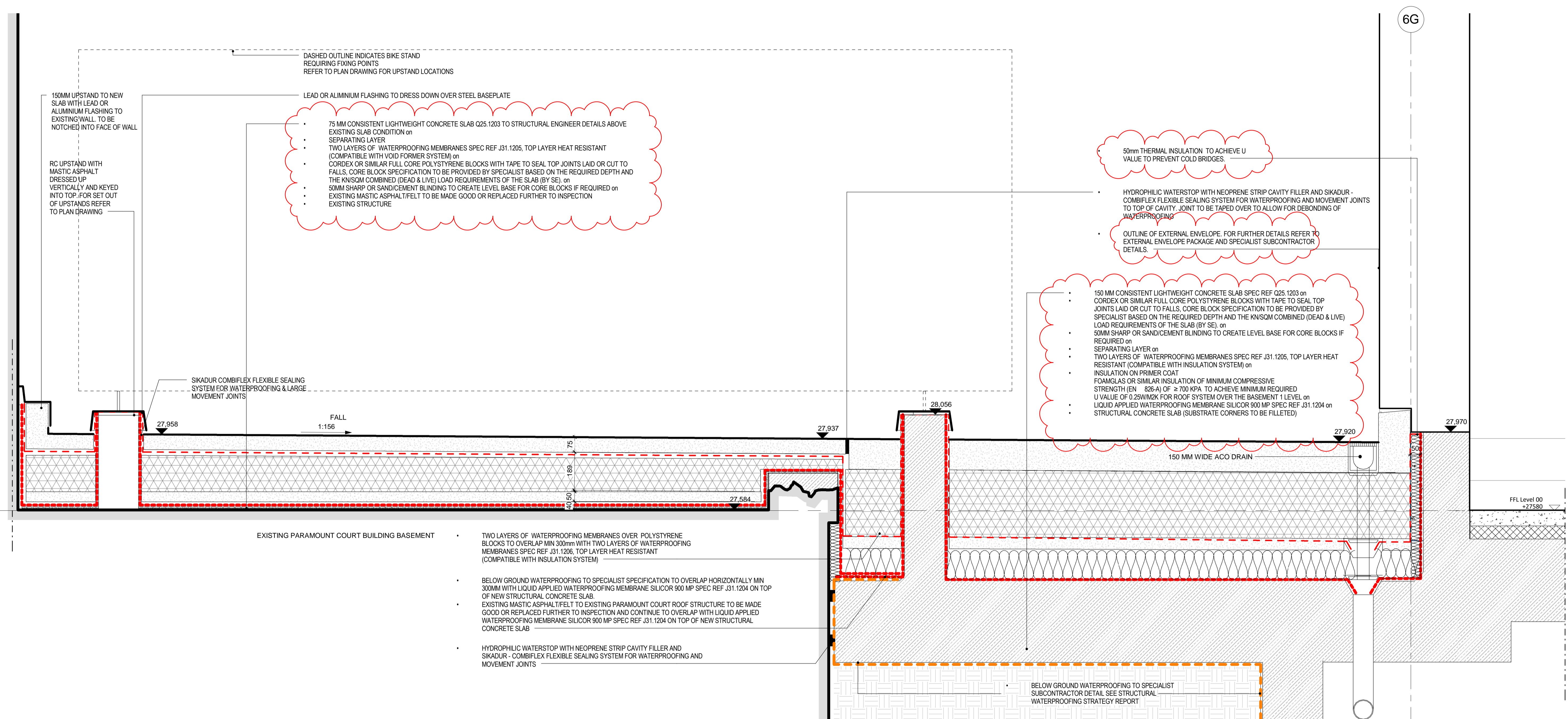
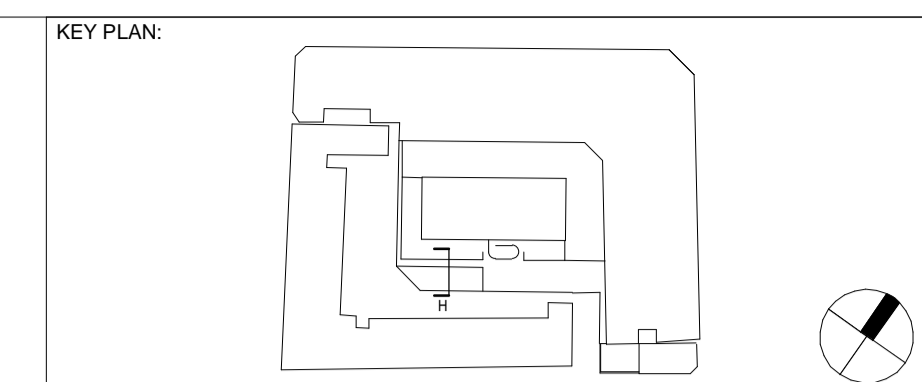
143704 1:10

DRAWING TITLE

UCLH Phase 4 & PBT

External Works Section EE

PROJECT	ISSUER	AREA	LEVEL	TYPE	TRADE	SEQUENCE	REV
P4PBT	STW	AFA	GND	SEC	A31	143704	C



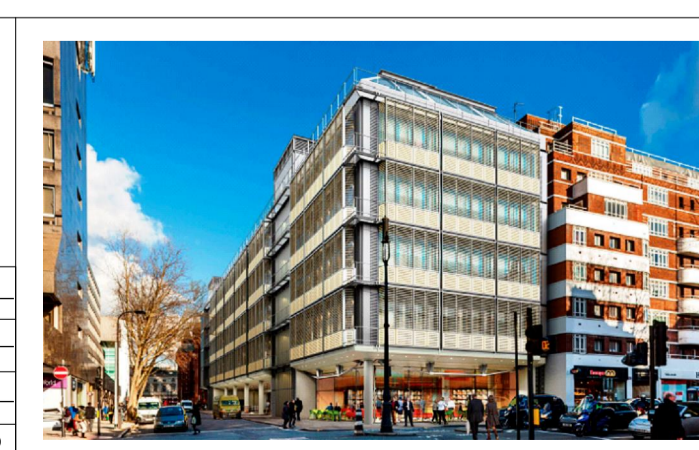
SEC-HH External Works-Paramount Court Basement Junction
143705 1:10

NOTES:

Rev	DATE	REVISION HISTORY	Dsg	Drw	Chk	App
C	2016.11.15	Issued For Procurement - 100% Stage E Issue	STW	FL	KK	KB
B	2016/09/03	S1 - Issued For Coordination / 90% Review / Includes BYUK comments	STW	BB	KK	KB
A	2016/08/26	S1-Issued for Coordination / 90% Review	STW	BB	KK	KB

ALL REVISIONS

Rev	DATE	REVISION HISTORY	Dsg	Drw	Chk	App
C	2016.11.15	Issued For Procurement - 100% Stage E Issue	STW	FL	KK	KB
B	2016/09/03	S1 - Issued For Coordination / 90% Review / Includes BYUK comments	STW	BB	KK	KB
A	2016/08/26	S1-Issued for Coordination / 90% Review	STW	BB	KK	KB



BOUGUES
Head Office:
Elizabeth House,
39 York Road,
London, SE1 7NG,
Tel: 020 7401 0020
Fax: 020 7401 0030
www.bougues-uk.com

University College London Hospitals NHS Foundation Trust

Name	Signature	Date
Designed by	STW	2016.11.15
Drawn by	FL	2016.11.15
Checked	KB	2016.11.15
Approved	KB	2016.11.15

ORIGINATOR
Scott Tallon Walker Architects

NG Bailey CampbellReith

VARIAN medical systems | Particle Therapy

SCALE: 1:10 @ A1

BIM FILE NAME: P4PBT-STW-AFA-SL-M3-A31-100060

FIRST ISSUE DATE: 2016/04/12

PROPOSED STATUS: For Procurement

DRAWING TITLE: UCLH Phase 4 & PBT External Works Section HH

PROJECT	ISSUER	AREA	LEVEL	TYPE	TRADE	SEQUENCE	REV
P4PBT	STW	AFA	GND	SEC	A31	143705	C

