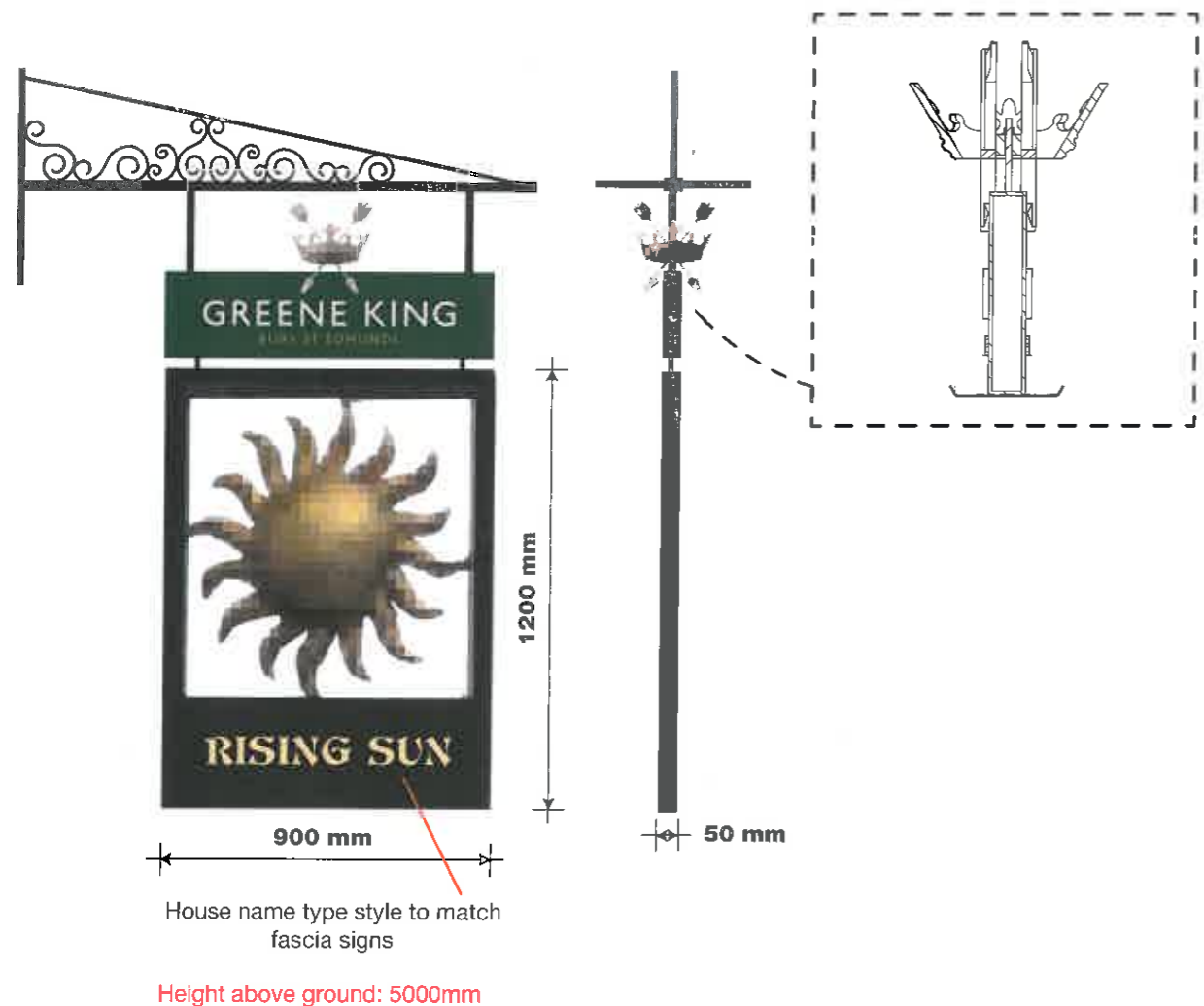


ITEM 01 (Qty 1)

Retain existing bracket work and pictorial sign.
Green king header to display a 3D crown and individual letters.
Refurbish existing 3D pictorial and add house name in new font to match fascia sign.
Scale 1:20



ITEM 02 (Qty 1)

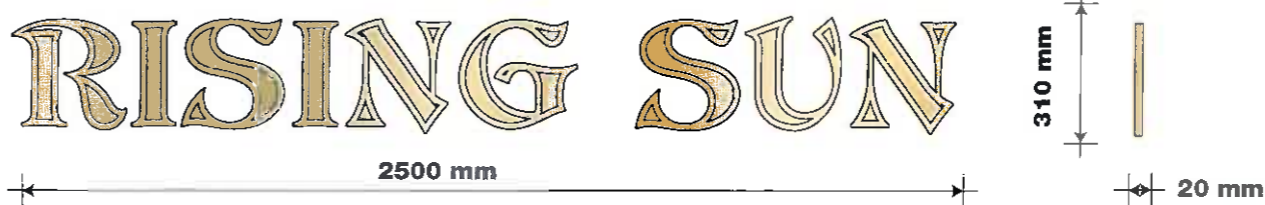
An engraved and infilled brass plaque complete with a timber backing board.
Scale 1:10



Height above ground: 1500mm

ITEM 03A (Qty 1)

New Individual gold letters with black coachline.
Existing trough light illumination.
Alarm boxes to be repositioned by others.
Scale 1:20



Height above ground: 4500mm

ITEM 03B (Qty 1)

New Individual gold letters with black coachline.
Existing trough light illumination.
Alarm boxes to be repositioned by others.
Scale 1:20



Height above ground: 4500mm

ITEM 03C (Qty 1)

New Individual gold letters with black coachline.
Existing trough light illumination.
Alarm boxes to be repositioned by others.
Scale 1:20



Height above ground: 4500mm

GREENE KING
RISING SUN
46 TOTENHAM COURT RD,
LONDON,
W1T 2ED

124046 (REV D)
19/01/17 - CLF

!a
ashleighsigns.co.uk

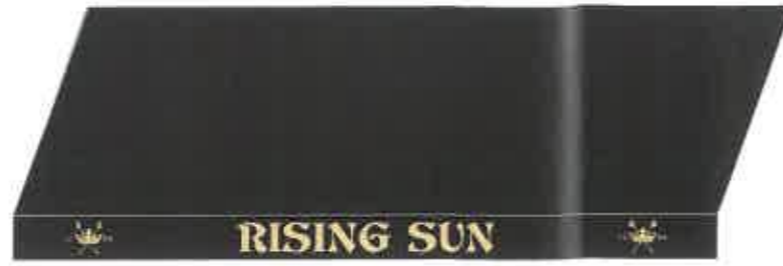
ITEM 06A (Qty 1)
Recover existing awnings.



House name type style to match fascia signs

Height above ground: 4000mm

ITEM 06B (Qty 1)
Recover existing awnings.



House name type style to match fascia signs

Height above ground: 4000mm

ITEM 07A (Qty 1)
Dusted crystal etch vinyl applied to windows.
Scale 1:10



470 mm
Height above ground: 1500mm

ITEM 07B (Qty 1)
Dusted crystal etch vinyl applied to windows.
Scale 1:10



470 mm
Height above ground: 1500mm

ITEM 07C (Qty 1)
Dusted crystal etch vinyl applied to windows.
Scale 1:10



470 mm
Height above ground: 1500mm

ITEM 07D (Qty 1)
Dusted crystal etch vinyl applied to windows.
Scale 1:10



470 mm
Height above ground: 1500mm

ITEM 07E (Qty 1)
Dusted crystal etch vinyl applied to windows.
Scale 1:10



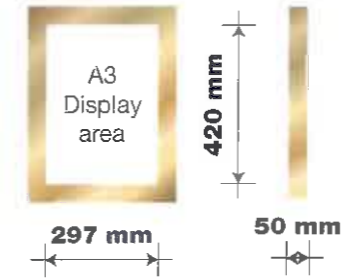
470 mm
Height above ground: 1500mm

ITEM 07F (Qty 1)
Dusted crystal etch vinyl applied to windows.
Scale 1:10



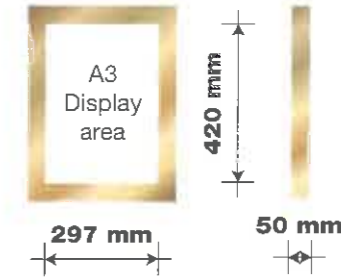
470 mm
Height above ground: 1500mm

ITEM 08A (Qty 1)
Brass menu case.
LED illumination.
Scale 1:20



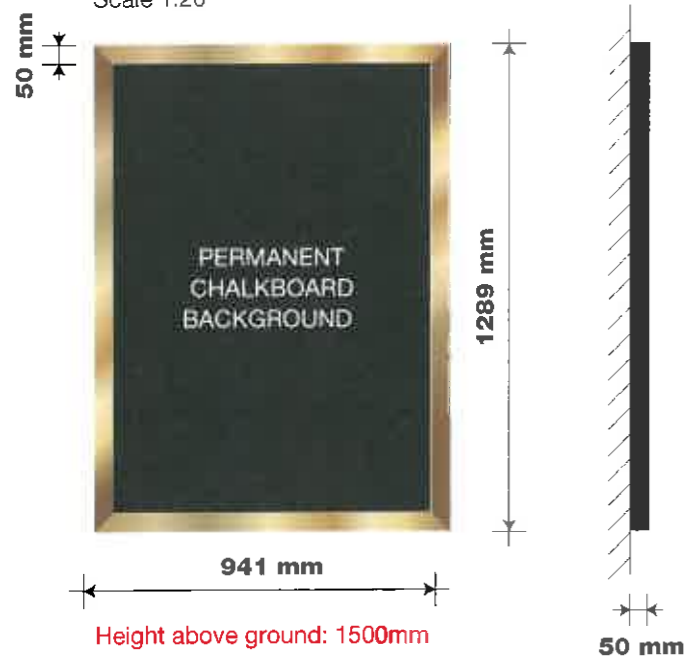
Height above ground: 1500mm

ITEM 08B (Qty 1)
Brass menu case.
LED illumination.
Scale 1:20



Height above ground: 1500mm

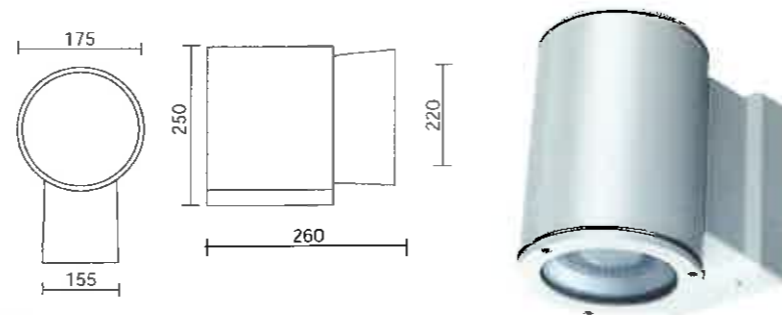
ITEM 09 (Qty 1)
Brass poster frame, with a permanent chalkboard background.
Supplied with an extra double sided chalkboard or corex insert.
Scale 1:20



Height above ground: 1500mm

ITEM 10 (Qty 3)
Narrow beam Mono Light 175 LED emission wall mounted luminaire.
Die-cast aluminium construction finished in powder coated silver.
Tempered safety glass lamp cover to single emission

Height above ground: 5000mm

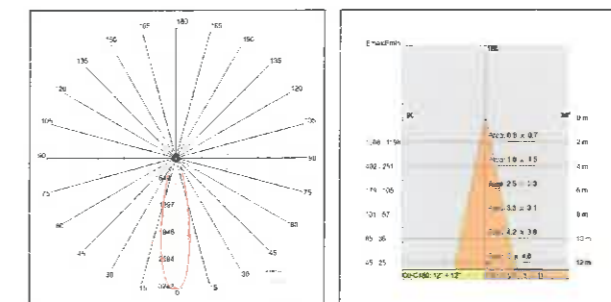


Use:
outside, led
installation:
Wall mounted
Body/structure:
EN AB-47100 Die-cast aluminium body
Coating:
Polyester powder coating with special treatment for outdoor use

Colour:
White
Optic/reflector:
Metacrylate LED lens
Equipment:
Silicon rubber gaskets
Glass/diffuser:
Clear tempered glass
Cable gland:
Silicon rubber cable gland PG11
Control gear:
Integrated LED diodes ballast, stabilized output current 1050mA dc

Voltage:
220-240V 50/60Hz
Beam angle:
Symmetric narrow beam 24 Degrees
Insulation class:
Insulation class 1
Weight:
4,400 kg
IP rating:
65
Glow wires:
Yes
Lamp included:
Yes
Luminaire wattage:
36 W
Luminous flux:
2854.9 lm
Lamp/life rated life:
50000 hours L80 B20
Colour temperature:
3000K
CRI:
80
Color constancy:
4 SDCM

MONO LIGHT 175 LED
COD: E5680-LBC-24



Lamp: 1 x 32 W 3300 lm

IP 65 A RG0

650°C

ITEM 11 (Qty 1)
DELETED

GREENE KING
RISING SUN
46 TOTENHAM COURT RD,
LONDON,
W1T 2ED

124046 (REV D)
19/01/17 - CLF

!a
ashleighsigns.co.uk

EXISTING



GREENE KING
RISING SUN
46 TOTENHAM COURT RD,
LONDON,
W1T 2ED

124046 (REV D)
19/01/17 - CLF

!a
ashleighsigns.co.uk

PROPOSED

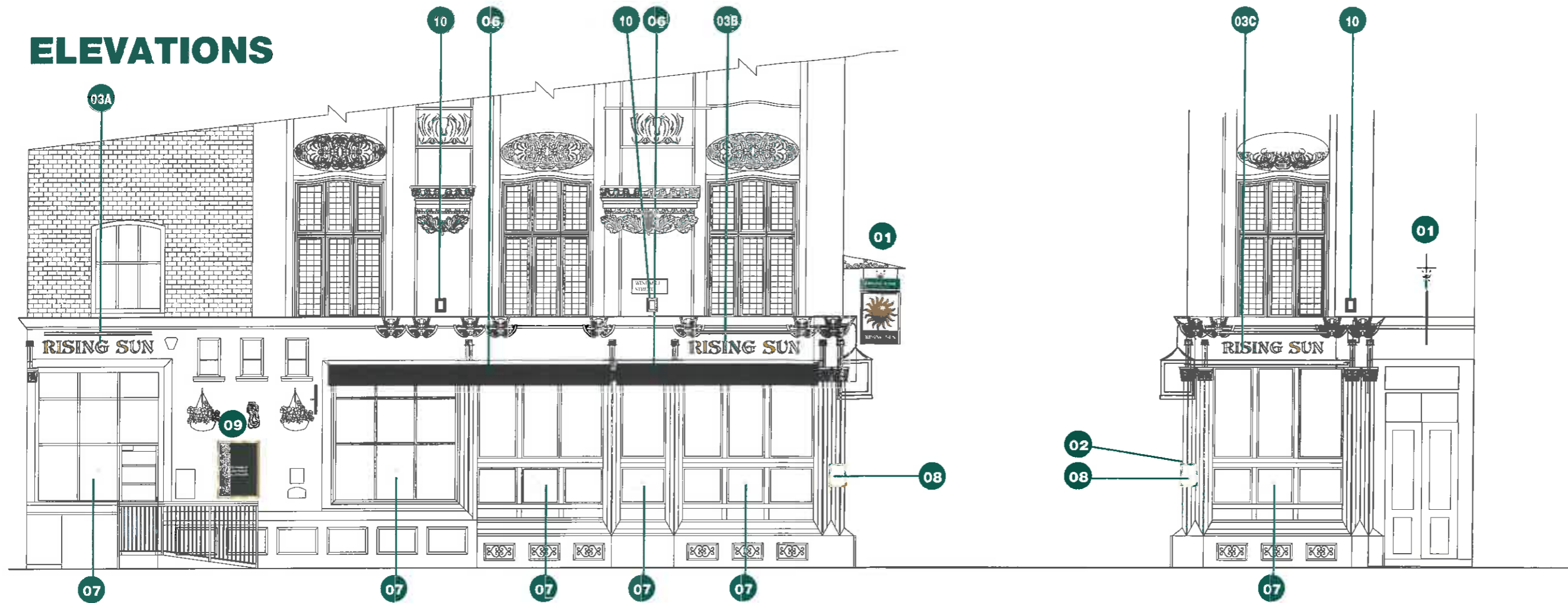


GREENE KING
RISING SUN
46, TOTENHAM COURT RD,
LONDON,
W1T 2ED

124046 (REV D)
19/01/17 - CLF

!a
ashleighsigns.co.uk

ELEVATIONS



PROPOSED WINDMILL STREET ELEVATION @ 1:100

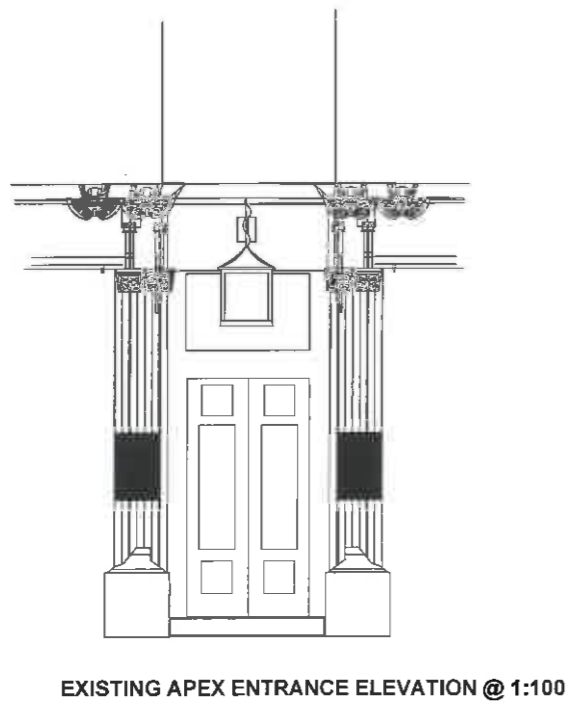
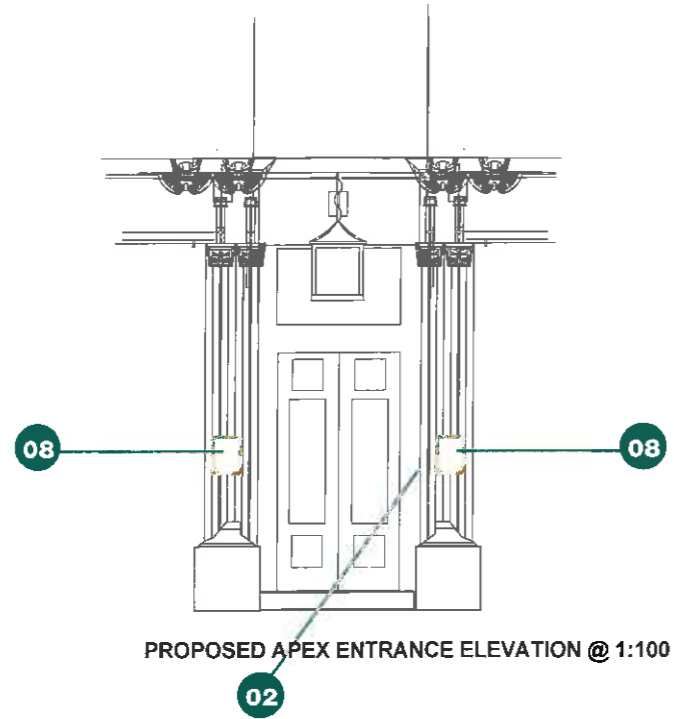


EXISTING WINDMILL STREET ELEVATION @ 1:100

GREENE KING
RISING SUN
 46 TOTENHAM COURT RD,
 LONDON,
 W1T 2ED

124046 (REV D)
 19/01/17 - CLF

ELEVATIONS

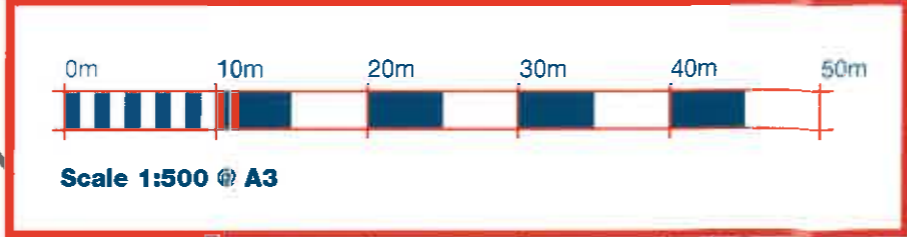
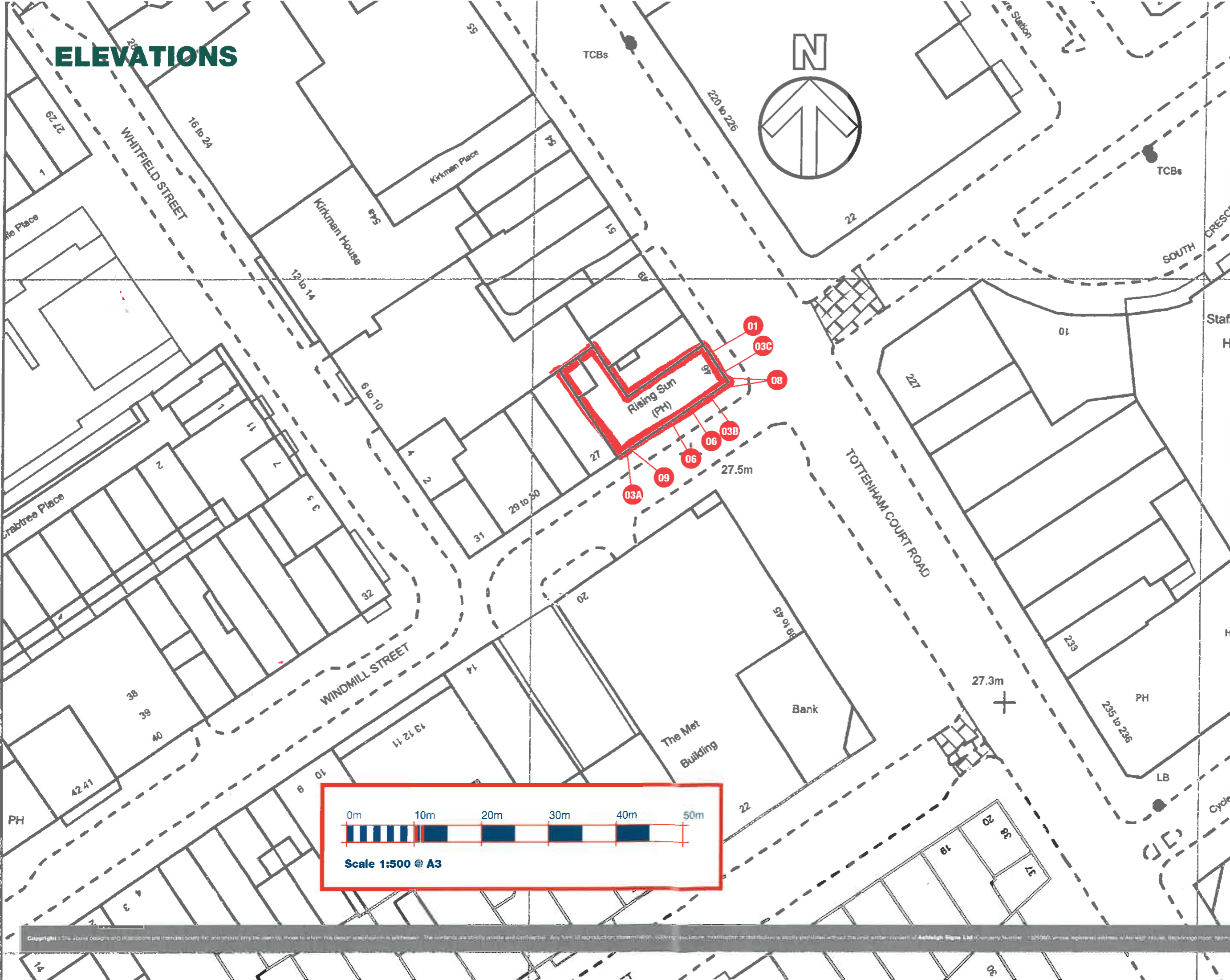


GREENE KING
RISEING SUN
46 TOTENHAM COURT RD.
LONDON.
W1T 2ED

124046 (REV D)
19/01/17 - CLF

!a
ashleighsigns.co.uk

ELEVATIONS



GREENE KING
RISING SUN
46 TOTTENHAM COURT RD,
LONDON,
W1T 2ED

124046 (REV D)
19/01/17 - CLF

