

# Camden Core Strategy 2010-2025

## Local Development Framework



**If you would like this document in large print  
or Braille, or in another language, please  
contact 020 7974 5615**

Find out more about this document and the LDF by visiting [camden.gov.uk/ldf](http://camden.gov.uk/ldf)  
or by calling the LDF hotline 020 7974 5615/2043.

Forward Planning  
London Borough of Camden  
Town Hall Extension  
Argyle Street  
London WC1H 8EQ

Published November 2010.

Camden's Local Development Framework. Core Strategy 2010.

## CS5. Managing the impact of growth and development

- 5.1 The overall approach of the Core Strategy, as set out in policy CS1, is to manage Camden's growth to make sure that its opportunities and benefits are delivered and sustainable development is achieved, while continuing to conserve and enhance the features that make Camden such an attractive place to live, work and visit. This flows from the Camden Community Strategy theme of a sustainable Camden that adapts to a growing population. Policy CS5 provides more information on our approach to managing the impact of growth in the borough.

### CS POLICY

#### CS5 – Managing the impact of growth and development

The Council will manage the impact of growth and development in Camden. We will ensure that development meets the full range of objectives of the Core Strategy and other Local Development Framework documents, with particular consideration given to:

- a) providing uses that meet the needs of Camden's population and contribute to the borough's London-wide role;
- b) providing the infrastructure and facilities needed to support Camden's population and those who work in and visit the borough;
- c) providing sustainable buildings and spaces of the highest quality; and
- d) protecting and enhancing our environment and heritage and the amenity and quality of life of local communities.

The Council will protect the amenity of Camden's residents and those working in and visiting the borough by:

- e) making sure that the impact of developments on their occupiers and neighbours is fully considered;
- f) seeking to ensure development contributes towards strong and successful communities by balancing the needs of development with the needs and characteristics of local areas and communities; and
- f) requiring mitigation measures where necessary.

#### Making sure development achieves the objectives of the Core Strategy

- 5.2 Central to managing Camden's future growth is the need to consider not just the scale and nature of that growth, but how it is provided and the effect on those who live in the area and the borough as a whole. All development in Camden, large or small, whether located in growth areas, highly accessible locations or in other parts of the borough, should take place in accordance with all relevant policies in the Core Strategy and the other documents that form part of Camden's Local Development Framework (see paragraph 4 in the Introduction) to ensure that the Council's vision for the borough is achieved. The Council will seek to ensure that the borough's growth brings benefits and opportunities to all.
- 5.3 The second section of this Core Strategy, *Meeting Camden's needs – Providing homes, jobs and facilities*, sets out our approach to providing the land uses, infrastructure and facilities that are needed to support Camden's communities, workers and visitors. This includes places to live, work and shop, community facilities and provision for walking, cycling and public transport. The section also sets out our approach to the unique issues faced in Central London, the home to many of the uses that contribute to London's role as a capital and major international city, as well as long-established residential communities.

- 5.4 One of the key elements of managing Camden's growth is securing the infrastructure and services needed to support Camden's growing numbers of residents, workers and visitors. To identify the infrastructure need in the borough in future years we commissioned the Camden Infrastructure Study 2009. This work formed the basis of the schedule in Appendix 1, which set out identified key infrastructure programmes and projects including transport, utilities, emergency services, education, health and other community facilities. It gives information on the nature of each infrastructure scheme, where it will be located, who will lead on its delivery and when it is expected to be provided. As the boundaries of the growth area are relatively tightly drawn, taking in the main development opportunities, the infrastructure to support a particular growth area may be provided outside its boundary. Please see section 19 – *Delivering and monitoring the Core Strategy* for more detail on our approach to infrastructure provision. In addition, the individual sections in the Core Strategy also contain details of infrastructure requirements and provision that are relevant to that section (for example, policy CS15 on open space and policy CS11 on transport.)
- 5.5 The third section of the Core Strategy, *A sustainable and attractive Camden – Tackling climate change and improving and protecting Camden's environment and quality of life*, focuses on making sure that growth is sustainable and properly takes into account the character of Camden and the aspects of the borough that make it such an attractive place to live, work and visit. It sets out how we intend to make Camden a low carbon, low waste borough; deal with climate change; and protect, and where possible enhance, our built environment, heritage and open spaces. It also sets out our approach to improving the safety and health of the community.
- 5.6 Our Camden Development Policies Local Development Framework document will be one of the main mechanisms by which we will seek to deliver to vision and objectives in the Core Strategy. It sets out planning policies that provide more detail of our approach to many of the matters covered in this Core Strategy. We will use Camden Development Policies alongside the Core Strategy when we determine applications for planning permission.

### **Protecting amenity**

- 5.7 Camden's high level of amenity – the features of a place that contribute to its attractiveness and comfort – is a major factor in the quality of life of the borough's residents, workers and visitors and fundamental to Camden's attractiveness and success. However, Camden's inner London location, the close proximity of various uses and the presence of major roads and railways can mean that privacy, noise and light can be particular issues in the borough.
- 5.8 Protecting amenity is, therefore, a key part of successfully managing growth in Camden. We will expect development to avoid harmful effects on the amenity of existing and future occupiers and nearby properties or, where this is not possible, to take appropriate measures to minimise potential negative impacts. More detail and guidance on our approach to amenity is contained in Camden Development Policies policy DP26 – and our Camden Planning Guidance supplementary document. Other policies in Camden Development Policies also contribute to protecting amenity in the borough by setting out our detailed approach to specific issues, such as the impact of food, drink and entertainment uses (policy DP12), noise and vibration (policy DP28) and air quality (policy DP32)

### **Promoting successful communities**

- 5.9 A key element to our overall strategy of managing Camden's future growth is to ensure that the opportunities and benefits of this growth are delivered in a way that meets the needs of Camden's residents and promotes strong and successful communities. In assessing development proposals, the Council will take into account the needs and benefits of the development alongside the individual characteristics and needs of the local area and community, and will seek to strike a balance between them. Where relevant, we will take into account the cumulative impacts of developments, or particular types of development, on local areas and communities.

#### **Key evidence and references**

- Camden Together – Camden's Sustainable Community Strategy; 2007-2012
- The London Plan (consolidated with alterations since 2004); Mayor of London; 2008







## CS11. Promoting sustainable and efficient travel

- 11.1 Camden benefits from excellent transport provision, including a direct link to continental Europe through St Pancras International; national rail services at King's Cross, St Pancras and Euston; 23 tube stations within the borough or on its boundary, 55 bus routes and 27 night bus routes. These provide excellent accessibility within Camden, to the rest of London and beyond. However, the borough also faces considerable challenges in relation to transport. Its road and public transport networks are subject to significant congestion, and air quality is a serious issue.
- 11.2 The Council needs to address these challenges and ensure that transport provision contributes towards our approach to managing the significant growth in the borough, as set out in Section 1. Policy CS11 promotes a range of sustainable transport measures and the delivery of additional infrastructure to support growth and relieve existing pressures on the transport system. It builds on, and helps to deliver, the sustainable transport priorities established in the Council's Green Transport Strategy. This aims to encourage more walking and cycling and reduce traffic in the borough by 15% from 2001 levels.



## CS POLICY

### CS11 – Promoting sustainable and efficient travel

The Council will promote the delivery of transport infrastructure and the availability of sustainable transport choices in order to support Camden's growth, reduce the environmental impact of travel, and relieve pressure on the borough's transport network.

#### Improving strategic transport infrastructure to support growth

The Council will promote key transport infrastructure proposals to support Camden's growth, in particular:

- a) King's Cross station improvements;
- b) the redevelopment of Euston Station and the provision of an improved public transport interchange;
- c) Crossrail services and associated station improvements at Tottenham Court Road;
- d) improved interchange at West Hampstead;
- e) improvements to facilities at Camden's London Underground and Overground stations, including at Camden Town and Holborn; and
- f) improvements to encourage walking and cycling as part of transport infrastructure works.

The Council will protect existing and proposed transport infrastructure (including routes for walking, cycling and public transport, interchange points, depots and storage facilities) against removal or severance.

#### Promoting sustainable travel

In order to support Camden's growth and to promote walking, cycling and public transport, the Council will:

- g) improve public spaces and pedestrian links across the borough, including by focusing public realm investment in Camden's town centres and the Central London area, and extending the 'Legible London' scheme;

- h) continue to improve facilities for cyclists, including increasing the availability of cycle parking, helping to deliver the London Cycle Hire Scheme, and enhancing cycle links; and
- i) work with Transport for London to improve the bus network and deliver related infrastructure, and support proposals to improve services and capacity on the tube, London Overground and Thameslink.

#### Making private transport more sustainable

As part of its approach to minimising congestion and addressing the environmental impacts of travel, the Council will:

- j) expand the availability of car clubs and pool cars as an alternative to the private car;
- k) minimise provision for private parking in new developments, in particular through:
  - car free developments in the borough's most accessible locations and
  - car capped developments;
- l) restrict new public parking and promote the re-use of existing car parks, where appropriate;
- m) promote the use of low emission vehicles, including through the provision of electric charging points; and
- n) ensure that growth and development has regard to Camden's road hierarchy and does not cause harm to the management of the road network.

#### Promoting the sustainable movement of freight

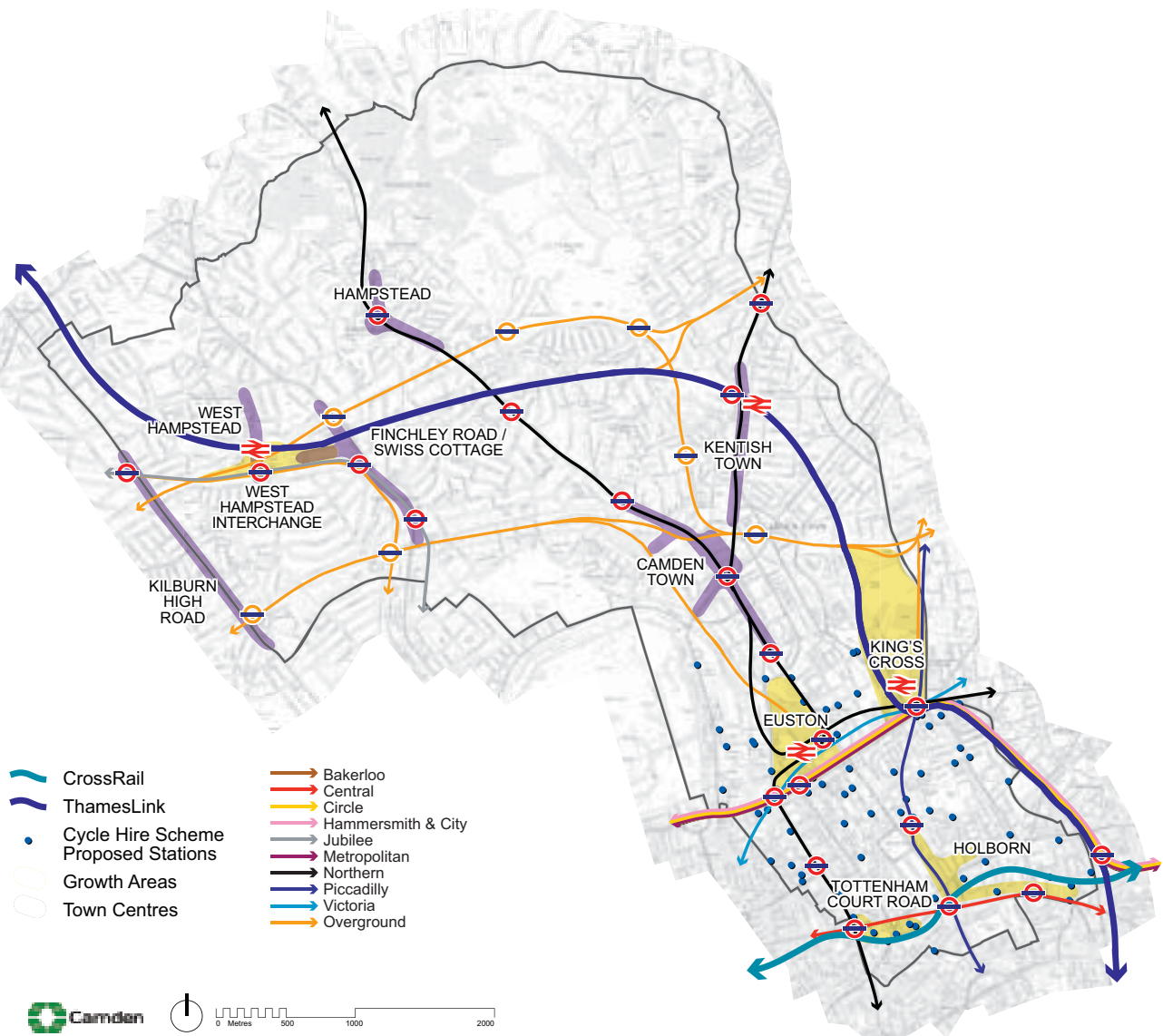
The Council will seek to reduce freight movement by road; encourage the movement of goods by canal, rail and bicycle; and minimise the impact of freight movement on local amenity, traffic and the environment.



## Improving strategic transport infrastructure to support growth

- 11.3 The strategic transport infrastructure projects identified in policy CS11 will play a central role in supporting future growth in the borough, with the development concentrated in locations that are, or will be, subject to significant improvements to transport facilities, services and capacity. The key infrastructure programmes and projects identified in Appendix 1 set out further details regarding these schemes, including delivery timescales and responsibilities, and sources of funding (items 39-50). Map 3 shows Camden's key existing and proposed transport infrastructure.

**Map 3: Transport**



This map is based on Ordnance Survey Material with the permission of Ordnance Survey on behalf of the Controller of Her Majesty's Stationery Office ©. Unauthorised reproduction infringes Crown copyright and may lead to prosecution or civil proceedings. Licence number LA100019726, year 2010.





11.4 All of Camden's growth areas (see policies CS1 and CS2) will be subject to significant improvements in strategic transport infrastructure:

- King's Cross will benefit from improved station facilities, significant tube capacity increases and improved service capacity and frequency on the Thameslink line;
- Euston will also benefit from an improved station and associated facilities and significant tube capacity increases. The Council will seek to deliver enhanced walking and cycling links to surrounding areas from both Euston and King's Cross;
- Tottenham Court Road Station is due to be served by Crossrail by 2018 and there will be a new Crossrail station linked to Tottenham Court Road underground station. The Underground station will also benefit from substantial improvements and from additional tube capacity through planned Northern Line upgrades. The Council will work with its partners to ensure that walking links are improved around the station in order to accommodate the expected increase in pedestrian activity in the area;
- Holborn will benefit from increased tube capacity through the Piccadilly Line upgrade and, over the longer term, the Council will pursue opportunities to deliver substantial improvements to Holborn Underground station, although funding for such works has not yet been identified. The provision of a Crossrail interchange at Farringdon, located adjacent to the borough boundary in Islington, will provide additional capacity to the south east of the borough. This and measures at Tottenham Court Road may help to alleviate current pressure on Holborn station. Improvements to pedestrian signage through the 'Legible London' scheme should also make it easier for pedestrians to find their way around the area; and
- West Hampstead will benefit from improved service capacity at its Jubilee Line and London Overground stations, as well as increased service frequency and capacity at its Thameslink station. In addition, the Council and Transport for London are currently investigating a range of measures to improve pedestrian linkages in the interchange area between West Hampstead's three stations, including addressing the need to widen pavements, and remodelling station entrances.

11.5 All of Camden's town centres are served by at least one tube or Overground station, each of which will benefit from planned improvements to service capacity and, in some cases, increased service frequency (see Appendix 1 – items 43 and 44). Planned Northern Line capacity improvements have the potential to help to relieve current peak time congestion at Camden Town station. Neighbouring tube stations at Chalk Farm and Mornington Crescent will also benefit from Northern Line capacity improvements, which should also help to relieve pressure at Camden Town station. Although funding is not currently identified for the planned redevelopment of Camden Town Underground station, the Council has published a planning brief for the site and will pursue opportunities to deliver a better functioning, more accessible station that relieves congestion issues. Camden Road overground station will also benefit from planned capacity and service improvements on the North London Line.

11.6 The Council considers that the scale of transport improvements focussed on Camden's main growth areas means that, in the event that any individual scheme is postponed or cancelled, sufficient transport infrastructure will be provided and other measures secured to support the levels of growth envisaged. For example, the range of planned tube, London Overground and rail

capacity improvements means that, if any single scheme did not occur, there will still be increased capacity on other lines. Also, walking, cycling and bus links will continue to be improved, and where appropriate, enhanced to meet reductions in planned capacity elsewhere.

- 11.7 Given the constraints on transport capacity in a densely developed area like Camden, almost every part of the existing transport infrastructure is a valuable asset. The Council will therefore seek to protect all existing and proposed facilities and links (including for Crossrail 2, also known as the Chelsea – Hackney Line), and safeguard the potential for improvements to the transport network. The Mayor of London's *Land for Transport Functions* supplementary guidance sets out further information on protecting land for transport.

## Promoting sustainable travel options

- 11.8 The Council will complement the provision of strategic transport infrastructure by working to improve local level sustainable transport measures. Camden's Local Implementation Plan (LIP) sets out how we intend to deliver more sustainable transport, and is a key mechanism for the implementation of the transport objectives set out in this Core Strategy, including applying for the necessary project funding from Transport for London.

### Walking

- 11.9 Walking is a 'zero carbon' form of travel that relieves pressure on infrastructure, both in terms of public transport infrastructure and Camden's roads. As such, the promotion of walking is an essential element of our approach to managing Camden's growth. It also provides significant wider social benefits in terms of promoting more active, healthy lifestyles (see policy CS16 *Improving Camden's health and well-being*), and helping to create more active vibrant streets and public spaces. Camden's Community Strategy seeks to improve conditions for pedestrians, and Camden's Walking Plan seeks to promote walking in the borough and to improve the street environment.
- 11.10 Policy CS14 – *Promoting high quality places and preserving our heritage* sets out the Council's approach providing attractive streets and spaces. Camden's Local Implementation Plan sets out key planned projects that will enhance our streets and spaces and provides a particular focus on the delivery of improvements in Camden's town centres and Central London. This reflects the higher level of activity in these areas, and the need to relieve current pressure on the public transport system by enhancing links between visitor generators and transport hubs. It also supports Camden's approach to future development by focusing improvements on locations that include the borough's growth areas. The Council will work with British Waterways, Natural England, other land owners/developers and users to improve the Regent's Canal and its towpath, which forms a main east-west pedestrian and cycle route through the borough (see Map 1 and policy CS15).
- 11.11 Improved pedestrian signage to help people find their way is also an important factor in encouraging more people to walk for shorter journeys, rather than using the car, tube or bus. Camden's Local Implementation Plan sets out how the Council will make it easier for people to find their way around through the 'Legible London' scheme, which provides new, simple signage for pedestrians. The Council is currently working with Transport for London and other partners, including neighbouring boroughs, to expand the initiative across the Central London Area. We will seek to extend the scheme throughout the borough – prioritising key destinations and localised centres where there is a concentration of amenities and a high level of pedestrian activity, including our town centres. New signage in these areas will be expected to reflect Legible London standards.
- 11.12 Public realm improvements will primarily be delivered by the Council using funds from Transport for London, to be sought through Camden's Local Implementation Plan. The Council's own funding and, where appropriate, developer contributions and will also be used to finance projects to promote walking. The Council will continue to work with Transport for London and neighbouring London boroughs to deliver improved pedestrian accessibility across borough boundaries. Camden is a member of the cross-borough Clear Zone Partnership, a key mechanism for delivering improvements to walking routes across Central London, linking King's Cross and Euston with Bloomsbury and Holborn, through to the River Thames and the West End (see policy DP32 in Camden Development Policies).

## Cycling

- 11.13 As with walking, cycling is a sustainable means of travel that provides the opportunity to relieve congestion as well as promoting healthy, active lifestyles. Camden's Cycling Plan (Fourth Review 2008) seeks to promote increased cycling in the borough by improving cycling facilities and routes. We will:
- ensure that all opportunities are taken to maximise the availability of new cycle parking across the borough both in new developments and more widely in any areas where there is need for increased provision, such as at town and local centres. This will principally be delivered through Camden's Parking Standards for new developments (see policy DP18 in Camden Development Policies) and as part of town centre improvement projects;
  - provide 'cycle stations' in appropriate locations across the borough. These are cycle parking facilities available to the public, usually in a secure area with restricted access. Appropriate locations would include town centres, Central London and major transport interchanges. Such stations have already been secured as part of approved schemes at King's Cross (1,000 bicycle spaces) and Regent's Place/Euston Tower (around 70 spaces).
  - improve cycle links across the borough to encourage more cycling. We will seek to ensure that developments contribute to and, where appropriate, provide appropriate links with strategic cycle routes, including the London Cycle Network (a network of radial and orbital routes for cyclists throughout London); and
  - work with Transport for London and other partners, including neighbouring boroughs, to implement the London Cycle Hire Scheme. The scheme was introduced by the Transport for London Business Plan 2009/10-2017/18, and aims to provide places, firstly in Central London, then across the capital, where people can pick up and drop off bicycles. We will seek to ensure that the scheme is extended to key destinations across the borough, including our town centres.

## Public transport

- 11.14 Camden will benefit from planned improvements to London Underground, London Overground and Thameslink service capacity, as well as the delivery of Crossrail. Between 2009 and 2020, Transport for London plans to significantly improve capacity on the Jubilee; Victoria; Northern; Piccadilly; and District, Hammersmith and City lines, as well as the London Overground North London Line, all of which pass through the borough. Also, the Thameslink train line serving St Pancras International is planned to benefit from significantly improved capacity and service frequency by 2015. Crossrail will provide a major new east-west train link through London, and help to support growth in the capital by tackling congestion and the lack of capacity on the existing rail network. The Mayor has introduced a policy in the London Plan and prepared Supplementary Planning Guidance - Use of planning obligations in the funding of Crossrail, to seek financial contributions from new developments towards the delivery of Crossrail, which is due to be completed by 2017. Please see Appendix 1 for further details on planned public transport infrastructure improvements (items 39-44).
- 11.15 In partnership with Transport for London, which manages the bus network across London, the Council will seek to ensure that Camden's growth is matched by improvements in bus services, where required. This will include provision of new bus facilities (for example, bus stops) where appropriate. Policies DP16 and DP17 in our Camden Development Policies Local Development Framework document set out the Council's expectations for new development in relation to transport capacity and public transport contributions.

## Travel Awareness

- 11.16 The Council also works to encourage more sustainable travel in schools, businesses and communities through its travel awareness programme. We also work with schools and businesses to produce Travel Plans, which provide a package of measures to encourage safe, healthy and sustainable travel options, including through reducing the need to travel and unnecessary car journeys, and promoting active means of transport such as walking and cycling. Camden is part of the North Central Travel Plan Network, a group of north and central London boroughs (supported by Transport for London) that offers advice to businesses to help them to develop travel plans.



## Making private transport more sustainable

- 11.17 The Council will continue to limit the amount of parking available for private cars. This represents a key part of our approach to addressing congestion, promoting sustainable transport choices, and facilitating the delivery of pedestrian and cycle improvements by maximising the amount of public space available to provide new walking and cycling facilities. Our approach to car parking will seek car-free development in the most accessible parts of the borough (Central London, town centres (except Hampstead) and other areas that are well-served by public transport). We will also seek car-capped developments where the provision of additional on-street parking would be harmful to parking conditions. Please see policies DP18 and DP19 in Camden's Development Policies for more on our approach.
- 11.18 For journeys where more sustainable travel options are not practical, car clubs and car pools offer an alternative to privately owned cars. Car clubs are hire schemes that allow households to avoid the costs of car ownership, deter them from using cars for a trip which is convenient without one, and reduce the amount of car parking space needed. For business journeys, car pools have many similar advantages, and can remove the need for business-users to commute by car. The Council will seek to expand the availability of car clubs and car pools by encouraging provision for them as part of proposals involving additional parking (see policy DP18 in Camden Development Policies), as well as working with operators to secure more car club spaces on Camden's roads where demand is identified.
- 11.19 Another part of the Council's strategy to promote more sustainable travel options is to allow the loss of existing public car parks, where appropriate. This helps to promote the use of sustainable transport by limiting the availability of parking spaces, and also promotes more efficient use of land in the borough. For further details, please see policy DP19 in Camden Development Policies.
- 11.20 We will also encourage low emission vehicles by increasing the availability of electric charging points across the borough. Although still contributing to congestion, these vehicles do not have the air quality impacts of ordinary cars. Where provision for the use of private cars in new developments is unavoidable, the Council will therefore seek provisions such as electric charging points (see policy DP18 in Camden Development Policies).
- 11.21 The demand for movement, deliveries and car parking on Camden's roads already exceeds the space available, meaning that effective management of Camden's road network is essential. The Council will seek to ensure that new development does not cause harm to Camden's road hierarchy, or to the ability of Council (and for strategic roads, Transport for London) to manage the road network. Policy DP21 in Camden Development Policies sets out our requirements regarding connections to the road network from developments.



- 11.22 A number of Camden's centres, in particular Camden Town and Swiss Cottage, suffer from a poor pedestrian environment due to gyratory systems that hinder movement and create a poor quality public realm. This has a negative impact on local amenity and the quality of life in these centres. While the Council acknowledges that these roads are important to maintaining smooth traffic flow through London, it will work with Transport for London to investigate long-term opportunities to remove or significantly alter these gyratories for the benefit of these centres and the people that use them.

## Promoting the sustainable movement of goods

- 11.23 The movement of goods can have a significant impact on the environment, in terms of noise and disturbance, and air pollution. These impacts are particularly severe in an urban, densely populated borough, such as Camden. The Council will therefore seek to minimise the movement of goods and materials by road by:
- promoting alternative forms of freight movement that have lower environmental impacts, such as the use of Regent's Canal, rail freight and the use of cycle-freight as an extension to cycle courier services; and
  - seeking to deliver more efficient goods movement. We will work with our partners to explore the potential for a freight consolidation facility to serve Camden's Central London Area. These facilities are transfer and distribution centres that consolidate loads from a number of vehicles into single loads for delivery to a specific destination or area.
- 11.24 We will work with our partners, including Transport for London, developers, freight operators and businesses to assess how these aims could be achieved, including for the servicing of new developments both during construction and when in use. Camden is part of the Freight Quality Partnership for Central London, which brings together retailers, freight operators, Central London boroughs, and Transport for London to consider ways to achieve more efficient and sustainable movement of freight.
- 11.25 The Council will also seek to ensure that the impact of construction traffic and the servicing of future developments are kept to a minimum. Policy DP20 in Camden Development Policies sets out how we will seek to minimise the impact of freight movement from development. We are working with Transport for London to investigate opportunities to provide charging points for low emission goods vehicles, which can have a lower impact than normal vehicles in terms of both air pollution and noise.

### Key evidence and references

- Camden Local Implementation Plan (LIP) 2005/06-2010/11
- Camden Green Transport Strategy 2008-2012
- Camden Walking Plan Second Edition 2006
- Camden Cycling Plan: fourth annual review 2008
- Camden Interim Parking and Enforcement Plan 2005/11
- Camden Road Network Management Plan (2006)
- Camden Streetscape Design Manual 2005
- Camden Sustainability Task Force Report on Transport
- The London Plan (consolidated with Alterations since 2004); Mayor of London; 2008
- Transport for London Business Plan 2009/10-2017/18
- Land for Transport Functions Supplementary Planning Guidance; Mayor of London; 2007
- Planning Policy Guidance (PPG) 13: Transport; ODPM; 2001
- Camden Together – Camden's Sustainable Community Strategy 2007-2012

## CS14. Promoting high quality places and conserving our heritage

- 14.1 Camden does not have a single built character but is made up of many diverse areas, each with their own identity. The southern part of the borough, which forms part of Central London, is characterised by a high density built environment and complex mix of uses. The central part of the borough contains several town centres surrounded by areas of medium-density housing and some employment uses. The north of the borough is predominantly residential of a lower density with substantial open space at Hampstead Heath. Throughout the borough there are examples of Camden's unique architectural heritage, with many high quality buildings and places, old and new. This is reflected in our large number of conservation areas and listed buildings, which have been recognised for their special architectural or historic interest.
- 14.2 Our overall strategy is to sustainably manage growth in Camden so it meets our needs for homes, jobs and services in a way that conserves and enhances the features that make the borough such an attractive place to live, work and visit. Policy CS14 plays a key part in achieving this by setting out our approach to conserving and, where possible, enhancing our heritage and valued places, and to ensuring that development is of the highest standard and reflects, and where possible improves, its local area. Policy CS13 above and policy DP22 in Camden Development Policies set out our approach to ensuring that design in the borough is sustainable and that schemes include measures to minimise the effects of, and adapt to, climate change.

### CS POLICY

#### CS14 – Promoting high quality places and conserving our heritage

The Council will ensure that Camden's places and buildings are attractive, safe and easy to use by:

- a) requiring development of the highest standard of design that respects local context and character;
- b) preserving and enhancing Camden's rich and diverse heritage assets and their settings, including conservation areas, listed buildings, archaeological remains, scheduled ancient monuments and historic parks and gardens;
- c) promoting high quality landscaping and works to streets and public spaces;
- d) seeking the highest standards of access in all buildings and places and requiring schemes to be designed to be inclusive and accessible;
- e) protecting important views of St Paul's Cathedral and the Palace of Westminster from sites inside and outside the borough and protecting important local views.

#### Excellence in design

- 14.3 Camden has many special and unique places and historic and modern buildings of the highest quality. As well as preserving this rich heritage, we should also be contributing to it by making sure that we create buildings of equally high quality that will be appreciated by future generations. The design of the places and buildings that make up our local environment affects us all and our quality of life. High quality design is visually interesting and attractive but it is not just about what things look like. Good design makes places that put people first, are welcoming, feel safe and are enjoyable and easy to use for everyone, whether they are living in, working in or just passing through the borough.



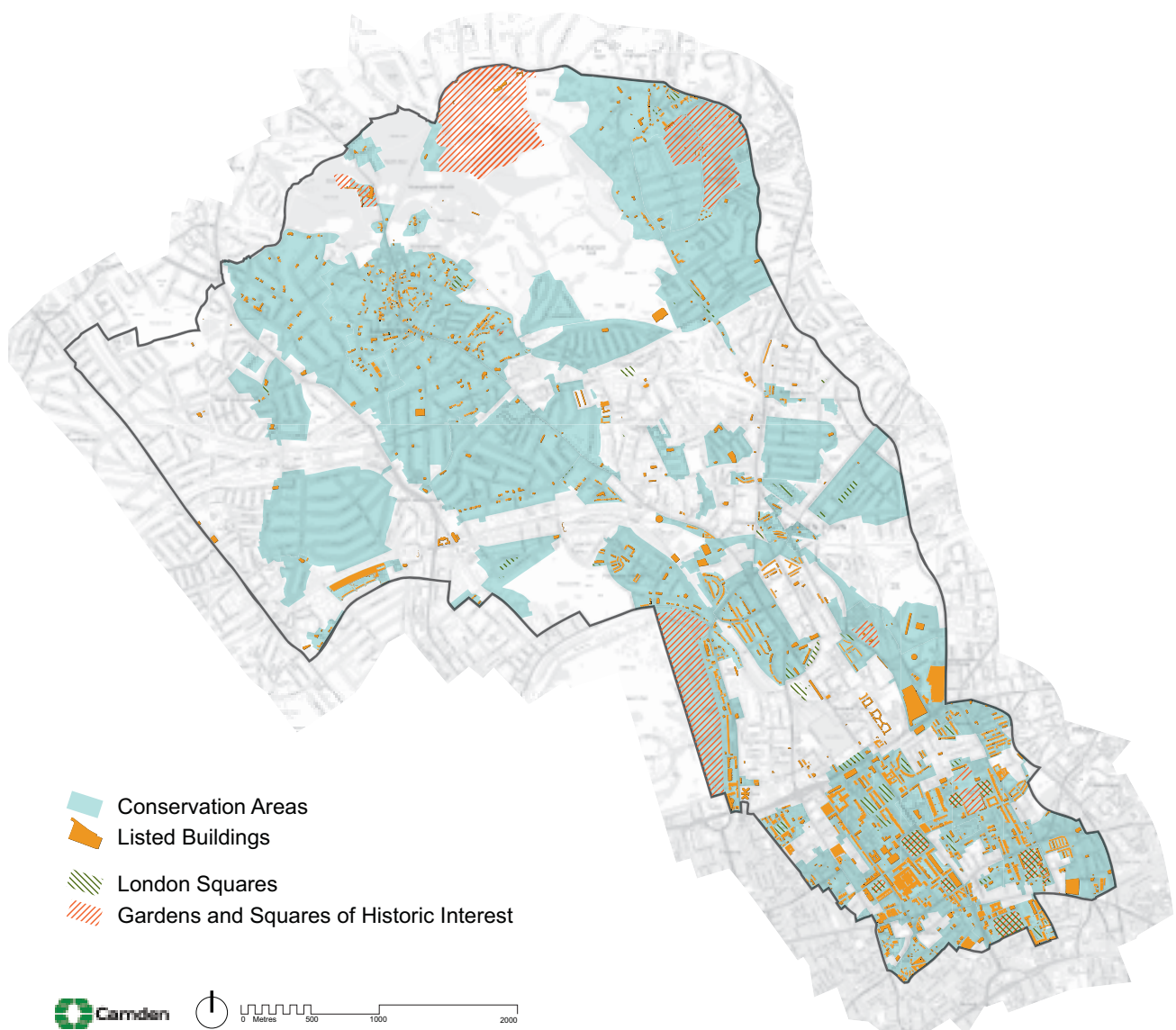


- 14.4 Development schemes should improve the quality of buildings, landscaping and the street environment and, through this, improve the experience of the borough for residents and visitors. The Council will therefore insist on high quality design throughout the borough. In accordance with government guidance in Planning Policy Statement (PPS) 1 – *Delivering Sustainable Development* we will not accept design that is considered inappropriate to its context or which fails to take opportunities to improve the character and quality of an area and the way it functions. Please see Camden Development Policies (policy DP24) for more detailed guidance on our approach to the design of new development and alterations and extensions. When assessing design, we will also take into account government/CABE guidance *By Design – Urban Design in the planning system: towards better practice* and our own Camden Planning Guidance supplementary document.
- 14.5 The Council is working with its partners to promote and celebrate excellence in design and improve public buildings, landscaping and the street environment; for example through the Camden Design Initiative, which seeks to improve public space and the built environment and encourage involvement, awareness and understanding of good design, including the bi-annual Camden Design Awards, which recognise high quality and innovative designs.
- 14.6 Good design is safe and accessible, and responds flexibly to the needs of its users. It creates buildings that have minimal negative impact on the environment, during construction and beyond. The construction and use of buildings currently accounts for around half of national carbon emissions and it is therefore vital that new and redeveloped buildings are designed to have a beneficial impact on their environment. See CS13 – *Tackling climate change through promoting higher environmental standards* and CS17 – *Making Camden a safer place* for our approach to these matters.
- 14.7 High quality design also takes account of its surroundings and what is distinctive and valued about the local area. Camden is made up of a diversity of areas, each with their own distinctive character, created by many elements such as architectural style and layout, social and economic history, landscaping and mix of uses – as summarised in the description of Camden’s character below. As Camden is a densely built-up borough where most development involves the replacement, extension or conversion of existing buildings, taking account of context and local character is particularly important. The Council will therefore expect the design of buildings and places to respond to the local area and its defining characteristics and reinforce or, if appropriate, create local distinctiveness.
- 14.8 While tall buildings offer the opportunity for intensive use, their siting and design should be carefully considered in order to not detract from the nature of surrounding places and the quality of life for those living and working around them. Applications for tall buildings will be assessed against policy CS14 and policies DP24 – *Securing high quality design* and DP25 – *Conserving Camden’s heritage* in Camden Development Policies, along with the full range of policies on mixed use, sustainability, amenity and microclimate. and other relevant policies. Effect on views, impact on local microclimate and provision of communal and private amenity space will also be important considerations.

## Camden's heritage

- 14.9 Camden has a rich architectural heritage with many special places and buildings from throughout Camden's history (see map 6). 39 areas, covering much of the borough, are designated as conservation areas, recognising their special architectural or historic interest and their character and appearance. We have prepared conservation area statements, appraisals and management strategies that provide further guidance on the character of these areas. We will take these documents into account as material considerations when we assess applications for planning permission and conservation area consent in these areas.
- 14.10 Over 5,600 buildings and structures in Camden are nationally listed for their special historical or architectural interest, and 53 of the borough's squares are protected by the London Squares Preservation Act 1931. In addition, 14 open spaces in Camden are on English Heritage's Register of Parks and Gardens of Special Historic Interest. The Council will consult with English Heritage over proposals affecting these parks and gardens. We also encourage the restoration and management of Parks and Gardens of Special Historic Interest and London Squares to enhance their value. Camden also has a generally well-preserved archaeological heritage, with 13 identified archaeological priority areas, although this can be vulnerable to modern development and land use.

## Map 6: Heritage



This map is based on Ordnance Survey Material with the permission of Ordnance Survey on behalf of the Controller of Her Majesty's Stationery Office ©. Unauthorised reproduction infringes Crown copyright and may lead to prosecution or civil proceedings. Licence number LA100019726, year 2010.

- 14.11 We have a responsibility to preserve and, where possible, enhance our heritage of important areas and buildings. Policy DP25 in Camden Development Policies provides more detailed guidance on the Council's approach to protecting and enriching the range of features that make up our built heritage.
- 14.12 Architectural detail, materials, colour and structures such as walls can make a significant contribution to the appearance of an area, but can often be altered without the need for planning permission. Cumulatively, many minor building works can gradually erode the quality of an area and undermine the quality of conservation areas. We will therefore make use of 'Article 4 Directions' in appropriate locations to bring some minor works under planning control. We are intending to introduce such measures in the conservation areas of Belsize, Hampstead, and Swiss Cottage, where loss of historic character through cumulative change is apparent. Primrose Hill conservation area already benefits from a comprehensive Article 4 Direction, which has helped to retain its high quality historic character.

### **Landscaping and public realm**

- 14.13 The quality of our streets and public spaces affects the quality of all our lives. We enjoy being in and passing through attractive, clean and well-maintained places, but are discouraged from walking in and through areas with a poor environment. An enhanced public realm should integrate transport and land use, contribute to improved walking and cycling environments, respect and reinforce local identity and character, attract people to the area and encourage the use of streets and public spaces to create diverse, vibrant and lively places.
- 14.14 The Council is committed to improving Camden's streets and public spaces and has carried out many improvement schemes with many more ongoing and planned. We have produced a Camden Streetscape Design Manual to raise the standard of street works throughout the borough. This sets standards for our own works and provides guidance for other agencies. It encourages respect for local character and promotes high quality, clutter-free design to make streets and public places that are safe and easy to use for all.
- 14.15 A number of studies on streets and spaces have been produced, particularly for the south of the borough (e.g. Bloomsbury, King's Cross and St Giles/Tottenham Court Road). These have been commissioned and funded by a range of organisations (including TfL, LDA, Design for London and UCL) sometimes in partnership with the Council. It is procedurally difficult for the Council to adopt these non-statutory documents as formal planning or other guidance. We will therefore look to draw on the best of this work to create a long-term vision for these areas, emphasising local character and providing a high quality environment for walking, which is formally agreed by the Council.
- 14.16 In order to improve the environment for walking in the borough, Camden is committed to the 'Legible London' concept which aims to improve how easily pedestrians can understand the layout of the capital and find their way around by introducing clear and consistent signage and maps. The programme has begun in Covent Garden and Bloomsbury, and future schemes are anticipated around the borough. Camden has also established a 'Place Shaping Board' to consider the most appropriate ways to shape the services, facilities, infrastructure and public realm to meet the needs of current and future populations (see section 4 – *Delivering and Monitoring the Core Strategy*).
- 14.17 Further information on measures being taken by the Council and its partners to improve the quality of our streets and public places is included in CS2 – *Growth areas*, CS8 – *Promoting Camden's centres and shops*, CS11 – *Promoting sustainable and efficient travel*, CS15 – *Protecting and improving our parks and open spaces and encouraging biodiversity*, and CS17 – *Making Camden a safer place*.
- 14.18 High quality landscaping plays an important role in the attractiveness and character of our surroundings. It can improve the setting of buildings, bring trees and other greenery into built-up areas to relieve the hard landscaping and provide shade, and provide habitats for wildlife. The Council will expect development schemes to provide a high standard of landscaping and boundary features, such as walls and fences. We will encourage appropriate use of landscaping in the form of 'green roofs', 'brown roofs' and 'green walls' which have a number of environmental benefits (e.g. in providing wildlife habitats, in helping to cool and insulate buildings and in retaining water, helping to



reduce flooding), as well as being visually attractive. More detail on our approach to landscaping is set out in the Council's Camden Planning Guidance supplementary document and policy DP22 in Camden Development Policies.

## Access

- 14.19 Good access benefits everyone. However, many people are disadvantaged by poor access to facilities and vulnerable and disadvantaged groups, such as the elderly and disabled people, can be particularly affected. Poor access can be caused by difficulties in reaching facilities or by difficulties in using the facilities themselves. The Council requires new buildings and spaces to be inclusive and accessible to all. As accessibility is influenced by perceptions as well as physical factors, buildings should also be designed to appear, as well as be, fully accessible. The Council will require Design and Access Statements for developments to show how the principles of inclusive design, ensuring access for all, have been integrated into the proposed development, and how inclusion will be maintained and managed.
- 14.20 Making roads and pavements and the spaces between buildings fully accessible is as important as making the buildings themselves accessible. The Council will seek improvements for all pedestrians to ensure good quality access and circulation arrangements, including improvement to existing routes and footways. The Camden Streetscape Design Manual and our Camden Planning Guidance supplementary document provide more detailed guidance on this issue.

## Views

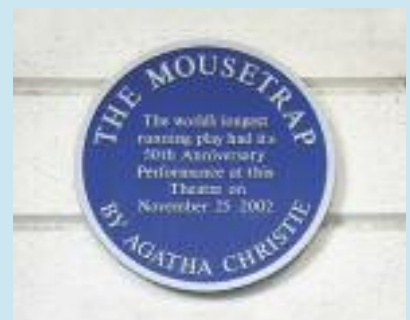
- 14.21 A number of London's most famous and valued views originate in, or extend into, Camden. These are:
- views of St Paul's Cathedral from Kenwood, Parliament Hill and Primrose Hill;
  - views of the Palace of Westminster from Primrose and Parliament Hills; and
  - background views of St Paul's from Greenwich and Blackheath.
- 14.22 The Council will protect these views in accordance with London-wide policy and will resist proposals that would harm them. Where existing buildings that affect a view are redeveloped it is expected that any replacement building will be of a height that does not harm the view. The current framework for protecting these views is set by the London Plan (policies 4B.16 – 4B.18) and the Mayor's London View Management Framework supplementary planning guidance.
- 14.23 The Council will also consider the impact of a scheme, in terms of the townscape, landscape and skyline, on the whole extent of a view ('panorama'), not just the area in the view corridor. Developments should not detract from the panorama as a whole and should fit in with the prevailing pattern of buildings and spaces. They should seek to avoid buildings that tightly define the edges of the viewing corridors and not create a crowding effect around the landmark.
- 14.24 The Council will also seek to protect locally important views that contribute to the interest and character of the borough. These may include:
- views of and from large public parks and open spaces, such as Hampstead Heath, Kenwood Estate, Primrose Hill and Regent's Park, including panoramic views, as well as views of London Squares and historic parks and gardens;
  - views relating to Regent's Canal;
  - views into and from conservation areas; and
  - views of listed and landmark buildings and monuments and statutes (for example, Centrepont, St Stephen's, Rosslyn Hill and St George's, Bloomsbury).
- 14.25 We will seek to ensure that development is compatible with such views in terms of setting, scale and massing and will resist proposals that we consider would cause harm to them. Development will not generally be acceptable if it obstructs important views or skylines, appears too close or too high in relation to a landmark or impairs outlines that form part of the view. Further guidance on important local views is set out in our supplementary planning documents, for example in individual conservation area statements, appraisals and management strategies and the Planning Framework for the Tottenham Court Road Station and St Giles High Street Area.

## Camden's character

Camden is characterised by a great richness and variety in its built and natural environment, with a valuable heritage of local, national and international significance. The following section describes the places, buildings and features that give Camden its distinctive character.

**The southern part of the borough** is where most of Camden's future growth will take place. It forms part of Central London and has a richly varied and dense character. The planned Georgian streets and squares (e.g. Bedford, Russell, Fitzroy) of Bloomsbury are evidence of the early expansion of London in a form that was architecturally groundbreaking. Modest mews developments to the rear of the terraces contrast in scale and are a particularly characteristic type here and elsewhere in the borough. Regents Park and Nash's 1820s residential development sit at the south western boundary of the borough, contrasting with the earlier Georgian developments in the area.

King's Cross and Euston are parts of the borough that are expected to experience the most change and development over the next fifteen years. Railways have had a significant impact on the appearance of the borough from the 19th century to the present day. These brought monumental architecture and inward migration to the borough and their viaducts, cuttings, tunnels and buildings still affect the shape of development in many parts of Camden, in particular to the north of Euston Road. King's Cross was the largest station in England when it opened and is the earliest great London terminus still intact in its original form. St Pancras (by George Gilbert Scott), now the new London terminus for Eurostar, can claim to be Britain's most impressive station in terms of both architecture and engineering and the station's dramatic roof line forms an important local landmark. Euston station, its ancillary accommodation and railway lines have a major impact on the nature of its surroundings and its future redevelopment will create opportunities to improve the local environment and links between neighbouring areas.







The Inns of Court were some of the earliest establishments in the southern part of the borough. The historic buildings, courtyards and squares of Lincoln's Inn and Gray's Inn give a distinctive atmosphere to this part of Camden, and create oases away from surrounding busy roads. Camden's Central London area also contains Seven Dials with its unusual star-shaped street layout and sundial pillar and the brick, semi-industrial buildings and intimate spaces of Hatton Garden, which were developed in the 19th century to house the workshops and offices of the jewellery trade. The area remains an internationally significant jewellery quarter.

Camden is home to a large number of further education establishments and most are located in the southern part of the borough, including the University of London, London School of Tropical Medicine, Central St Martin's College of Art and Design and the Royal Academy of Dramatic Art. These play a significant role in shaping the character and appearance of this part of the borough. The south of the borough also houses a number of nationally important hospitals and medical research institutions, including Great Ormond Street Hospital, the National Hospital for Neurology and Neurosurgery and the Wellcome Trust.





The town centres of Camden Town, Kentish Town and Kilburn High Road are key elements in **the central part of the borough**. These centres developed in a piecemeal fashion along historic routes into London. They are now marked by continuous, close grained development with commercial units at ground floor level on either side of the road, with terraced housing of a similar density on the streets to the east and west, and little open space. Buildings types are generally consistent in appearance, and public houses are frequent landmarks, which echo the original inns and travellers rests along the historic routes. There is a narrow range of scale and height, and dwellings usually have small gardens to front and rear. Camden Town is strongly characterised by its markets and entertainment. These create a strong draw for tourists and influence the style and appearance of development, which is in many cases colourful and individual.

The areas between these major roads and town centres are characterised by speculative, residential development from the mid to late 19th century for the then new middle classes. These show a variety of distinctive architectural forms and scales, with detached and semi-detached houses in classical Italianate form in Belsize and an eclectic variety of styles including neo-Gothic, Queen Anne, Domestic Revival, Arts & Crafts in Fitzjohns/Netherhall, Redington/Frognaal and South Hampstead/Swiss Cottage. Gospel Oak, West Hampstead and the southern parts of Dartmouth Park were developed to a higher density with terraced houses, smaller gardens and have a more urban feel than Camden's other residential areas.

Social housing schemes are also an important element in the borough's built environment. St Andrews House on Saffron Hill is the oldest surviving public housing block in London whilst early 20th century examples include the London County Council's Bourne Estate on Leather Lane. The LLC's Ossulston Estate is considered the most important inner-city estate of the inter-war period. Post-war examples illustrate an architecturally ambitious programme of housing schemes by Camden Council following its creation in 1965, many of which are listed. The characteristic form was a megastructure of stepped terraces. This low rise, high density approach reflected traditional terraced housing, but provided light, privacy and private open space for all levels of accommodation. Examples are Brunswick Centre, and the estates of Fleet Road, Alexandra Road, Maiden Lane and Highgate New Town.

The Regent's Canal runs through the centre of the borough. Although it is often hidden from surrounding areas, it provides an area of nature conservation interest and amenity space along its course through King's Cross and Camden Town to Regent's Park.

**The northern part of the borough** benefits from the presence of the large open space of Hampstead Heath, which provides amenity and leisure space, a verdant setting to the surrounding development and famous views across London. Hampstead and Highgate are derived from medieval hamlets and have clearly defined village centres which reflect their origins. They have a variety of building types from cottages and terraces to detached houses and grand residences, with a generally densely packed, high quality urban grain of a range of styles, scales and ages. Both areas contain many high quality, architect-designed houses from the 19th and 20th centuries, many of which have become important parts of the local heritage and are listed for their national significance.





### Key evidence and references

- Conservation Area Statements/Appraisals/Management Strategies; London Borough of Camden; various dates
- Camden Walking Plan Second Edition 2006
- Camden Streetscape Design Manual 2005
- Planning Policy Guidance 16 – Archaeology and planning; DETR; 1990
- Conservation Principles, Policies and Guidance, English Heritage, 2008
- By Design: Urban Design in the Planning System – Towards Better Practice; DETR/CABE; 2000
- Planning Policy Statement 1 – Delivering Sustainable Development; ODPM; 2005
- Planning Policy Statement 5 – Planning for the Historic Environment; CLG; 2010
- Planning Policy Guidance 15 – Planning and the Historic Environment; DoE; 1994
- The London Plan (consolidated with Alterations since 2004); Mayor of London; 2008
- London View Management Framework Supplementary Planning Guidance; Mayor of London; 2007
- Sustainable design, climate change and the built environment; CABE Briefing; 2007
- Easy Access to Historic Buildings, English Heritage, 2004
- Easy Access to Historic Landscapes, English Heritage, 2005
- Seeing History in the View: Methodology for assessing the heritage value within views, English Heritage, 2008
- Guidance on Tall Buildings, English Heritage/CABE, 2007

