
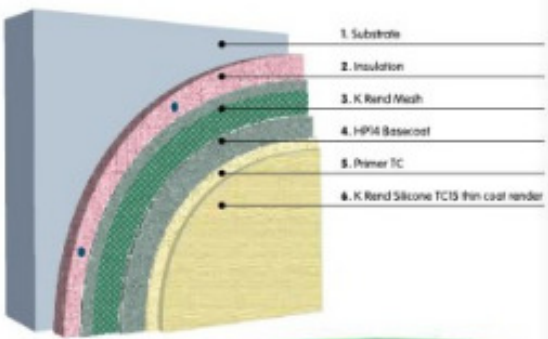




SILICONE THIN COAT (TC)

Silicone TC	Primer TC	
<p>Silicone TC is a ready to use organic resin render which is applied to provide a low maintenance textured finish. It is available in different textures and a wide variety of colours. Prior to application the substrate should be primed using Primer TC.</p> <p>Require: Silicone TC 10: 1.8kg / sq m approx. Silicone TC 15: 2.5 kg / sq m approx. Silicone TC 30: 5.0 kg / sq m approx.</p> <p>Product classification according to BS EN 15824:2009 Coating Material DIN 18558 – P Org 1</p> <p>A water-dilutable product for exterior and interior use.</p> <p>Water vapour permeability – Category V 2; Water absorption – Category W 3; Adhesion - 0.65 MPa; Thermal Conductivity: λ 10, dry (P=50%) = 0.83, λ 10, dry (P=90%) = 0.93;</p> <p>Reaction to fire - Class B-s2,d0</p> <p>Product Classification (DIN 18558) Coating Material DIN 18558 – P Org 1</p>	<p>Primer TC is a low odour, ready to use primer which is quick and easy to apply by brush, roller or spray. It is available in a wide range of colours which are co-ordinated to the colour of the Silicone TC topcoat.</p> <p>Primer TC should be used after the application of K Rend base coat and before Silicone TC.</p> <p>Require: Primer TC – 0.25 kg / sq m approx.</p> <p>Composition: A water-dilutable Acrylic resin dispersion.</p> 	<p>The Thin Coat range is particularly suitable where lightweight render systems are required, such as an external wall insulation system (illustrated below).</p>   



All full colour illustrations shown in this brochure are as accurate as the printing process will allow. It is important that a sample is obtained as we recommend colours be verified against K Rend Thin Coat samples before ordering.

MINERAL THIN COAT (TC)

Mineral TC

Mineral TC is a cement based, polymer modified render, requiring only the addition of water and 10 minutes mixing time. It will provide an attractive, low maintenance finish and is available in two textures and four standard colours.

Require:

Mineral TC 2: 2 - 2.5 kg / sq m approx.

Mineral TC 4: 4.5 - 5 kg / sq m approx.

Kitemark Classifications:

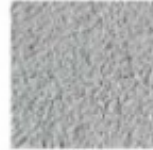
Compressive Strength: CSIII

Capillary water Absorption: W2

Thermal Conductivity: P=50% -0.45



Pure White



Granite



Pearl



Wheaten



Silicone TC 15, Pearl,
Co Antrim.



Silicone TC 15, Pure White and bespoke colours from the NCS Colours system, Somerset.