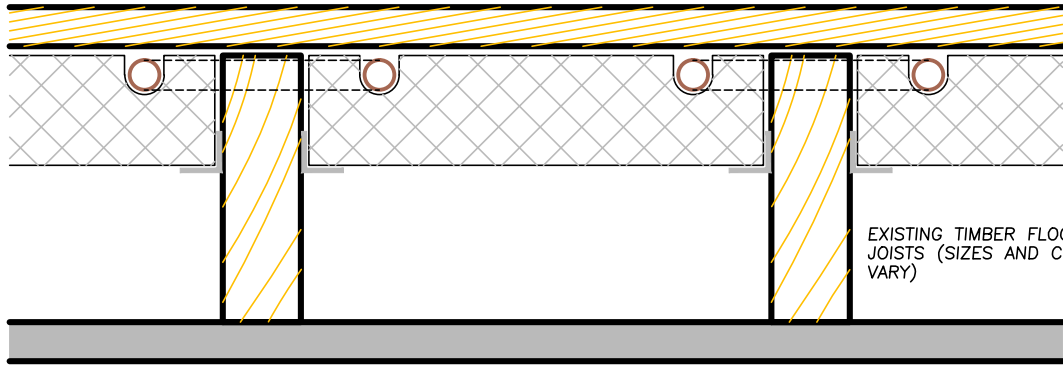


EXISTING FLOORBOARDS TAKEN UP FOR INSERTION OF INSULATION AND PIPEWORK, THEN RELAID OVER

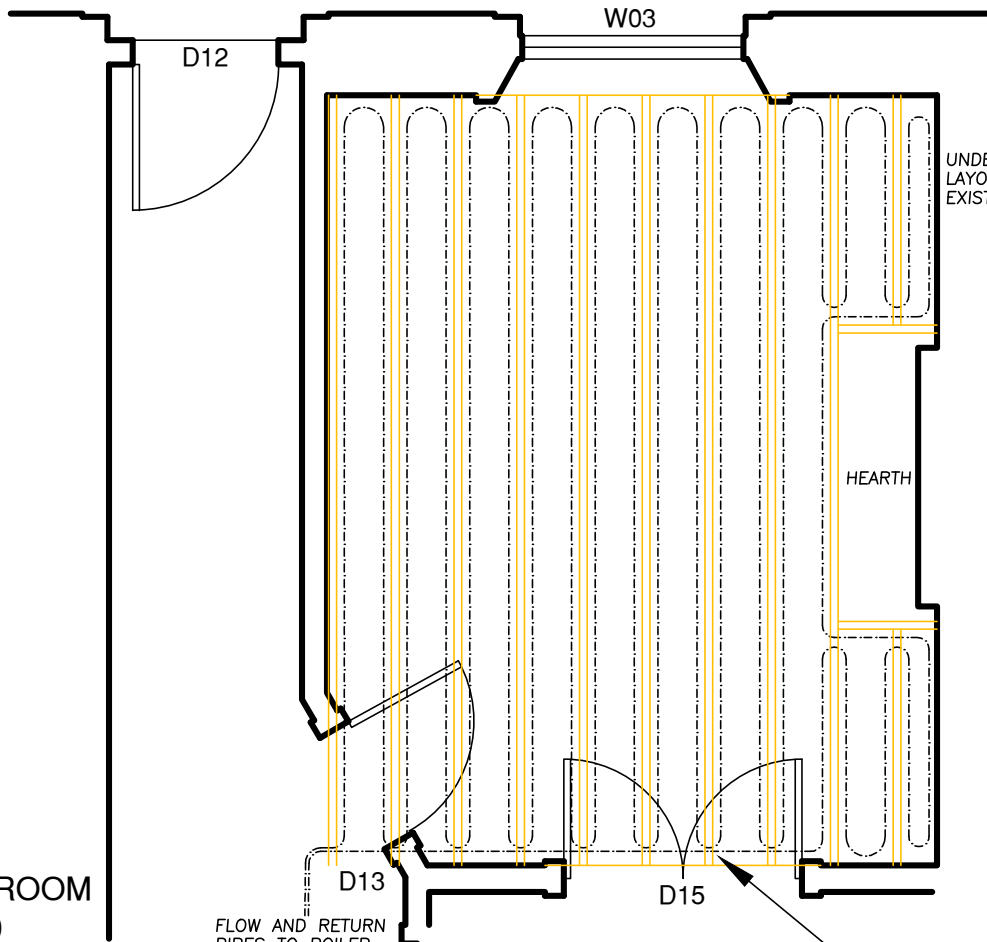


FLEXIBLE PIPEWORK LAID INTO GROOVED INSULATION BOARDS FITTED ONTO PLASTIC SUPPORTS FIXED TO JOISTS

EXISTING TIMBER FLOOR JOISTS (SIZES AND CENTRES VARY)

SECTION 1:5

CEILING PLASTERWORK NOT AFFECTED BY WORKS



UNDERFLOOR HEATING PIPEWORK LAYOUT COORDINATED WITH EXISTING FLOOR JOISTS

HEARTH

FLOW AND RETURN PIPES TO BOILER

PIPE LOOPS NOTCHED THROUGH JOIST ENDS EXTENT OF NOTCHING SIMILAR (OR LESS) THAN WOULD ARISE FROM RADIATOR PIPEWORK INSTALLATION

TYPICAL ROOM PLAN 1:50

PROPOSED



TYPICAL UNDERFLOOR HEATING TO TIMBER FLOOR
 14 REGENTS PARK TERRACE LONDON NW1
 STEPHEN BRANDES ARCHITECTS
 SCALE 1:5 & 1:50 @ A4
 DEC 2016
 575 LB 161