

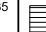
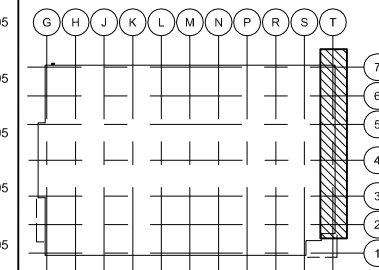


FOR GLASS SPECS REFER TO GENERAL NOTES
DWG-KXC-S2-001-Y-3129-21-950

-  TUFA STONE - BLACK
-  GRANITE - BLACK
-  LOUVRE



DO NOT SCALE : IF IN DOUBT ASK!

THIS DRAWING REMAINS THE PROPERTY OF McMULLEN FACADES LTD AND SHOULD NOT BE COPIED NOR ITS CONTENTS DIVULGED WITHOUT PRIOR CONSENT

Signed: CH Internal Quality Check
Date: 08/11/2016

McMullen Facades Ltd.
CONSTRUCTION ISSUE DRAWING

E	JM	ST	08/11/16	SIGN/CONSTRUCTION ISSUE	08/11/16
D	JM	ST	30/09/16	LOUVRE PLATES	30/09/16
C	JM	ST	08/08/16	EXT GL REVISED SIGNAGE	08/08/16
B	JM	ST	17/06/16	REVISED TO SUIT CLEAR OP 1000mm	17/06/16
A	JM	ST	13/05/16	GLAZING INCREASED, C/WALL/DOOR	13/05/16

No.	Intd	Intd	Date

Revision	Check	Description	Date

Contract: Kings Cross - S2

Architect: Mossessian Architecture

Main Contractor: Carillion

Drawing: East Elevation
Ground Floor

Drawn By: J.Millar Date: 01/04/16

Scale: NTS MFL No.:

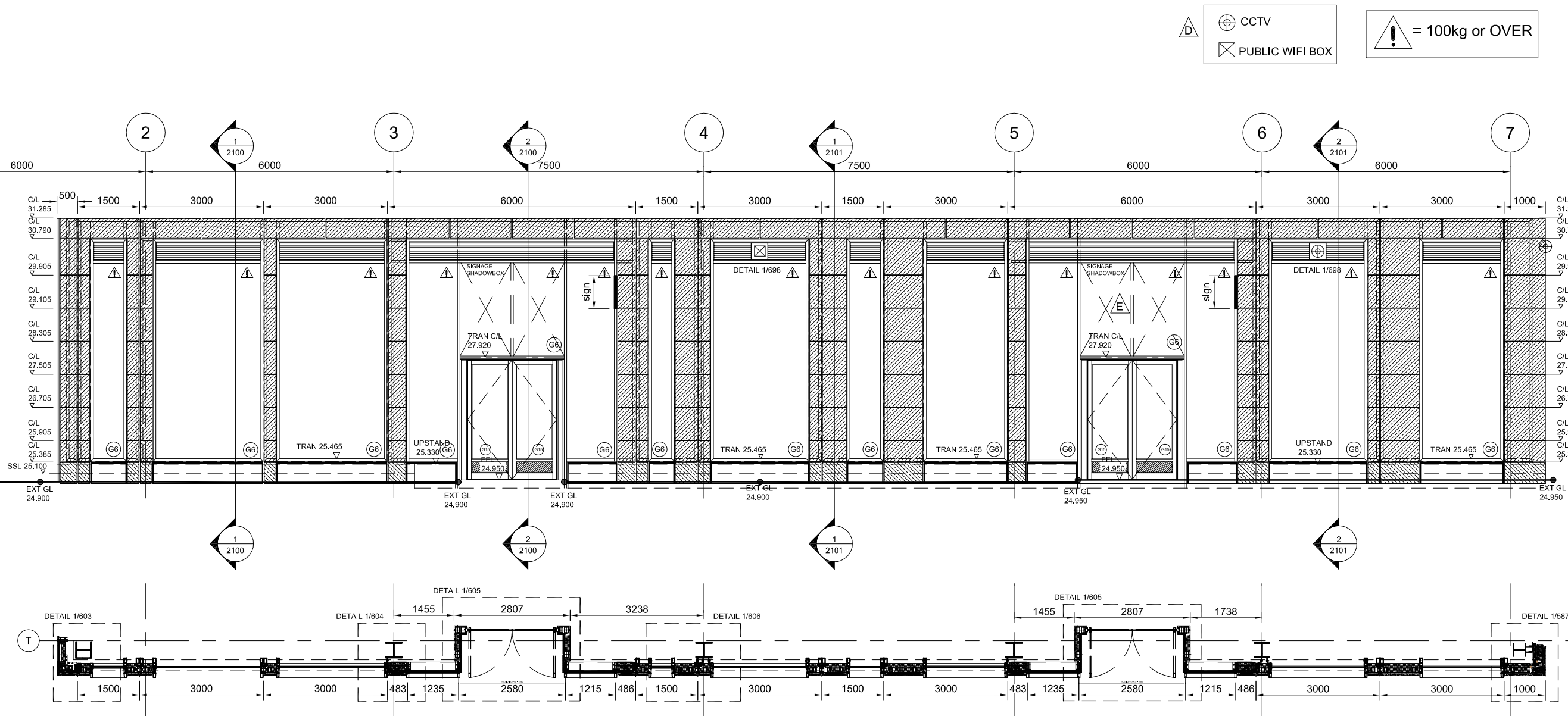
DMS Code: KXC-S2-001-Y-3129-21-320 Revision: E

DRAWING STATUS
STATUS INDICATES:

A - DRAWING FULLY APPROVED
B - APPROVED SUBJECT TO COMMENT
C - DRAWING NOT APPROVED

ARCHITECT'S SIGNATURE

McMullen Facades Limited
66 Lurgan Road, Moira,
Craigavon, Co. Armagh BT67 0LX
Tel: +44 (0) 28 9261 9688
Fax: +44 (0) 28 9261 9711
Email: design@mcmullenfacades.com



EAST ELEVATION - GROUND FLOOR