

FOR GLASS SPECS REFER TO GENERAL NOTES  
DWG-KXC-S2-001-Y-3129-21-995 &  
DWG-KXC-S2-001-Y-3129-21-991

- KEY**
- ANODIZED ALUMINIUM PANEL
  - PERFORATED ALUMINIUM PANEL
  - VERTICAL CORRUGATED METAL PANEL
  - HORIZONTAL CORRUGATED METAL PANEL
  - DOUBLE GLAZED SPANDREL UNIT
  - DOUBLE GLAZED UNIT WITH FRIFT
  - DOUBLE GLAZED VISION UNIT
  - DOUBLE GLAZED SHADOW BOX
  - TUFF STONE PANEL

**DO NOT SCALE : IF IN DOUBT ASK!**

THIS DRAWING REMAINS THE PROPERTY OF McMULLEN FACADES LTD AND SHOULD NOT BE COPIED NOR ITS CONTENTS DIVULGED WITHOUT PRIOR CONSENT

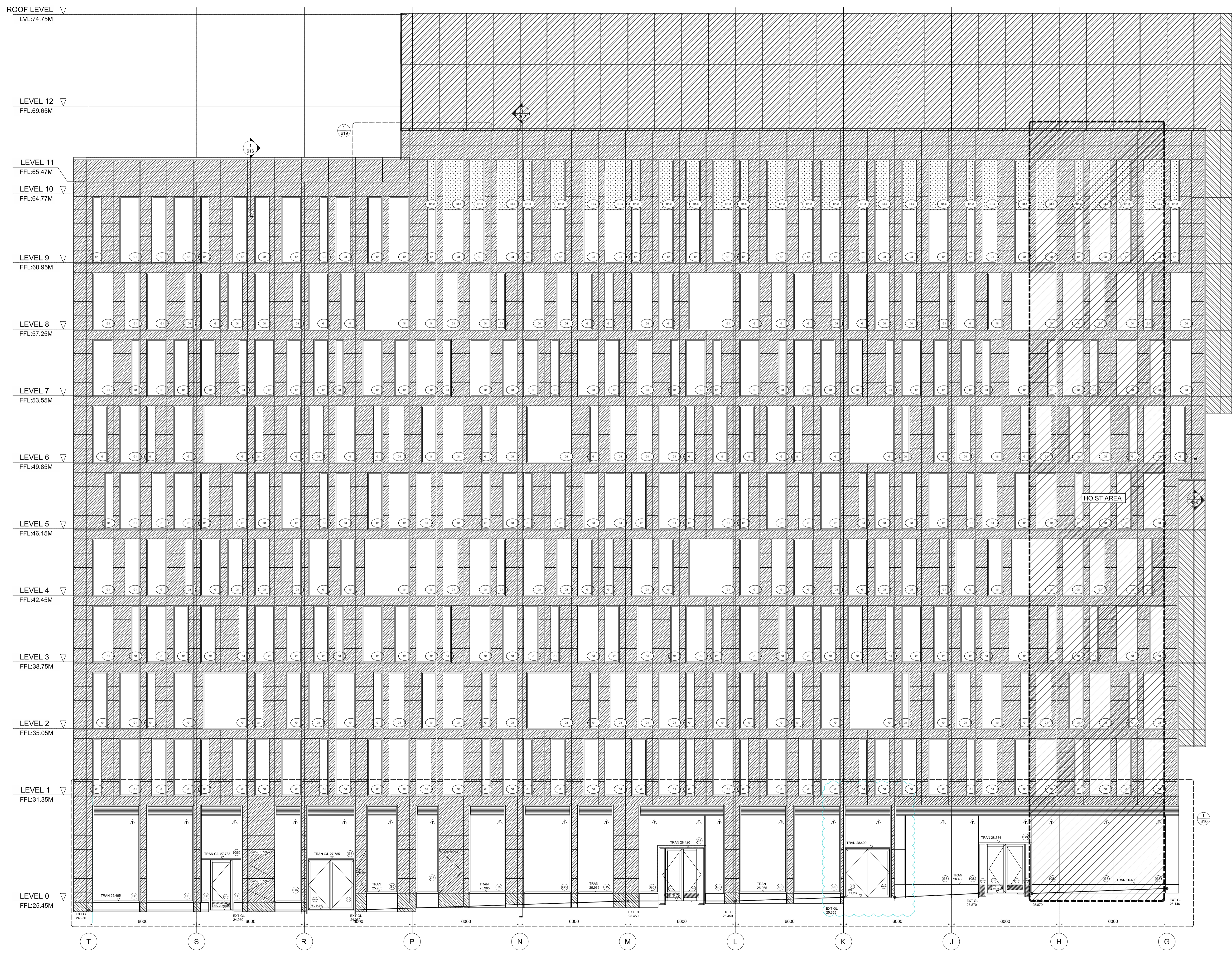
Signed:	S. TEMPLETON	Internal Quality Check
Date:	04.07.16	

No.	Intd.	Intd.	Date	Description	Date

Contract: KINGS CROSS S2  
 Architect: MOSSISSIAN ARCHITECTURE  
 Main Contractor: CARILLION  
 Drawing: NORTH ELEVATION  
 Drawn By: P.Somerville Date: 04.07.16  
 Scale: 1:100@A1 MFL No.:  
 DMS Code: KXC-S2-001-Y-3129-21-301 Revision: .

**DRAWING STATUS**  
 STATUS INDICATES:  
 A - DRAWING FULLY APPROVED  
 B - APPROVED SUBJECT TO COMMENT  
 C - DRAWING NOT APPROVED

**McMullen Facades Limited**  
 66 Lurgan Road, Moira,  
 Craigavon, Co. Armagh BT67 0LX  
 Tel: +44 (0) 28 9261 9688  
 Fax: +44 (0) 28 9261 9711  
 Email: design@mcmullenfacades.com



**1 NORTH ELEVATION**  
 Scale: 1:100