



Kings Cross, S2

Door Schedule and Operation Information

Report Title: Kings Cross, S2 – Door Schedule and Operation Information

Date: 15/07/2016

Prepared by: McMullen Facades Ltd
66 Lurgan Road
Moirra
County Armagh
BT67 0LX
N. Ireland

Telephone: + 44 (0) 28 9261 9688

Fax: + 44 (0) 28 9261 9711

Document Verification

Job Title	Kings Cross, S2		
Job Number	3129		
Document Title	Door Schedule and Operation Information		
Document Ref	KXC-S2-001-Y-3129-904-TR18		
Revision	Dae	Filename	Description
00	15/07/2016	KXC-S2-001-Y-3129-904-TR18.pdf	First Issue

Contents

1. Introduction
2. Secure by Design (SBD) information
3. Access Control and Associated works for Automatic door
4. Door Operation and ironmongery Information
5. Door Location
6. Indicative images of selected Ironmongery

1. Introduction

McMullen facades are the specialist sub-contractor employed to design, manufacture and install the glazed facades, hinged doors, sliding doors & glass balustrades on the Kings Cross, S2 project.

This report sets out to establish and finalise Mc Mullen Facades door function and hardware.

The aluminium doors glazed into the façade system will be a combination of the below door systems;

- Schuco ADS 65 HD thermally broken door system located on the ground floor where there is a requirement for doors to be certified to PAS 24 (Secure By Design)
- Senior Architectural System (SAS) aluminium non-thermally broken fully welded commercial Swing door system. Located on the ground floor for a robust door system into the retail areas.
- Senior Architectural System (SAS) aluminium non-thermally broken fully welded commercial Sliding door system with GEZE SlimDrive automatic operation. Located on the ground floor main entrance area.
- Hueck Lambda 77 thermally broken door system glazed into Type 1 Type 2 and Type 3 unitised systems located Level 6 and above.
- Hueck Volato M thermally broken lift and Slide door system located at inset balconies

2. Secure By Design (SBD) Information

The system and locking mechanisms within the selected doors shall be designed to meet the principles of 'Secured by Design'. McMullen Facades Ltd. are not a registered 'Secure by Design' manufacturer and installer and as such are only in a position to offer products that are designed, manufactured and installed in line with SBD recommendations.

McMullen Façades Ltd. where specified have included for the design, manufacture and installation of doors to meet the requirements of PAS 23 / 24. **However, please note that this is only applicable where the specified product already has an applicable security test certificate.**

Door 0/006a has been tested and certified to PAS 23/24 and is compliant with the SBD requirements. Door 0/027 uses the same system profiles, lock mechanism and ironmongery as Door 0/006a, however the operation is required to be compliant with access control. The selected lock can be fitted with and electric operation which will not affect the overall security of the door, however has not been tested to PAS 23/ 24 with the electric operation. Therefore Door 0/027 will not be compliant with the relevant security requirements in accordance with 'Secured by Design' and would need to be **reviewed and signed off by the SBD officer for acceptance.**

3. Access Control and Associated works for Automatic doors

MFL will design manufacture and install Door 0/027 to be complaint and able to be released using access control, however no allowance has been made for any access control systems (magnetic locks, fob access or video entrance system etc.). All access control systems are to be design supplied and installed by others.

Entrance doors 0/003a & 0/003b will be designed supplied and installed to be controlled with GEZE SlimDrive automatic operators. We would require the following electrical requirements to be supplied by others prior to the installation of the doors.

- 1 no. 240V 13A switched spur required, positioned above operator by others.
- Connection to the fire alarm system (if required) would require one pair of normally open volt free contacts to be supplied terminating at drive unit location by others.
- Any concealed containment (inc. draw wires) must be undertaken by others. Cabling to activation devices will otherwise be fitted by GEZE in surface mini trunking at a minimum distance to suit industry standards.

4. Door Operation and ironmongery Information

Door reference – 0/026a, 0/022c, 0/008a, 0/007a

- Door system - SAS Commercial Double Swing door
- Door type - Manual Outward non-emergency door
- Door operation - Keyed internal and external, Surface mounted door closers, S/S Pull handles externally, push pad internal, shoot bolts top and bottom on Slave leaf
- Finish - TBC

Door reference – 0/026c, 0/022b, 0/007b

- Door system - SAS Commercial Single Swing door
- Door type - Manual Outward non-emergency door
- Door operation - Keyed internal and external, Surface mounted door closers, S/S Pull handles externally, Push pad internal
- Finish - TBC

Door reference – 0/004

- Door system - SAS Commercial Double Swing door
- Door type - Manual Outward non-emergency door
- Door operation - Keyed internal and external, Surface mounted door closers, S/S Pull handles externally, Push pad internal. Door to be prepped for Mag lock (Prep requirement to be provided by Carillion)
- Finish - TBC
- Notes - Maglock by Others See *Section 3*.

Door reference – 0/027

- Door system - ADS 65 HD Schuco thermally broken swing door.
- Door type - Double Outward Emergency exit with Access Control
- Door operation - Keyed internal and external, Surface mounted door closers S/S Pull handles externally, emergency push bar internal. Door access control by others.
- Colour - EV1 Silver Anodised outside, RAL 9003 inside
- Notes - This door is to be SBD compliant, however although it uses the same hardware as per the test certificate it cannot be classified as SBD as it has not been tested with the electric motor required for the access control. *See Section 2.*
Audio c/w Camera, and Card Reader by others. *See Section 3*

Door reference – 0/006a

- Door system - ADS 65 HD Schuco thermally broken swing door.
- Door type - SBD Outward Double Emergency exit with Access Control
- Door operation - Keyed internal and external, Surface mounted door closers S/S Pull handles externally, emergency push bar internal. Door access control by others.
- Colour - EV1 Silver Anodised outside, RAL 9003 inside
- Notes - This door is SBD certified. *See Section 2.*
Ironmongery does not comply with QCIC information. Schuco products to be used to comply with system requirements.

Door reference – 0/003a,

- Door system - SAS Commercial bi parting door.
- Door type - Automated non-emergency exit with Access control.
- Door operation - Hook lock and shoot bolts. GEZE Slimdrive automatic operator. Door access control by others.
- Colour - TBC
- Notes - This door requires power requirements by others prior to installation
Card Reader, Audio c/w camera, Request for Exit, and Break Glass by others.
See Section 3.

Door reference – 0/003b,

Door system - SAS Commercial bi parting door.

Door type - Automated non-emergency exit.

Door operation - Hook lock and shoot bolts. GEZE Slimdrive automatic operator.

Colour - TBC

Notes - This door requires power requirements by others prior to installation
See Section 3.

Door reference – 2/003a, 2/003b, 3/003a, 3/003b, 4/003a, 4/003b, 5/003a, 5/003b, 6/003b,
6/003c, 7/003a, 7/003b, 8/003c

Door system - Hueck Volato M thermally broken lift and Slide door System

Door type - lift and Slide door System

Door operation - Keyed external Thumb-turn internal, Lift and Slide lever handle internal, Flush
Finger pull external

Colour - EV1 Silver Anodised outside, RAL 9003 inside

Door reference – 6/003a, 7/003c, 8/003a, 8/003b

Door system - Hueck Lambda 77 thermally broken door system

Door type - Single Outward opening non-emergency

Door operation - Keyed external Thumb-turn internal, Surface mounted door closers, lever handles
internal and external

Colour - EV1 Silver Anodised outside, RAL 9003 inside

Door reference – 10/002b

- Door system - Hueck Lambda 77 thermally broken door system
- Door type - Single Inward non-emergency
- Door operation - Keyed external Thumb-turn internal, Surface mounted door closer, lever handles internal and external
- Colour - EV1 Silver Anodised outside, RAL 9003 inside
- Notes - Position Switch by others *See Section 3.*

Door reference – TBC (11TH FLOOR ALONG G/L 5 BETWEEN G/L K & L)

- Door system - Hueck Lambda 77 thermally broken door system
- Door type - 1-1/2 leaf Inward non-emergency
- Door operation - Keyed external Thumb-turn internal, Surface mounted door closer, lever handles internal and external, shoot bolts top and bottom on Slave leaf
- Colour - EV1 Silver Anodised outside, RAL 9003 inside

Door reference – 11/014b

- Door system - Hueck Lambda 77 thermally broken door system
- Door type - Double Inward non-emergency
- Door operation - Keyed external Thumb-turn internal, Surface mounted door closer, lever handles internal and external, shoot bolts top and bottom on Slave leaf
- Colour - EV1 Silver Anodised outside, RAL 9003 inside

Door reference – 11/014a

- Door system - Hueck Lambda 77 thermally broken door system
- Door type - Double Inward non-emergency with Access Control
- Door operation - Keyed external Thumb-turn internal, Surface mounted door closer, lever handles internal and external, shoot bolts top and bottom on Slave leaf Door access control by others.
- Colour - EV1 Silver Anodised outside, RAL 9003 inside
- Notes - Maglock, Position Switch and Card Reader by others. *See Section 3.*

Door reference - 11/009a, 11/008

Door system - Hueck Lambda 77 thermally broken door system

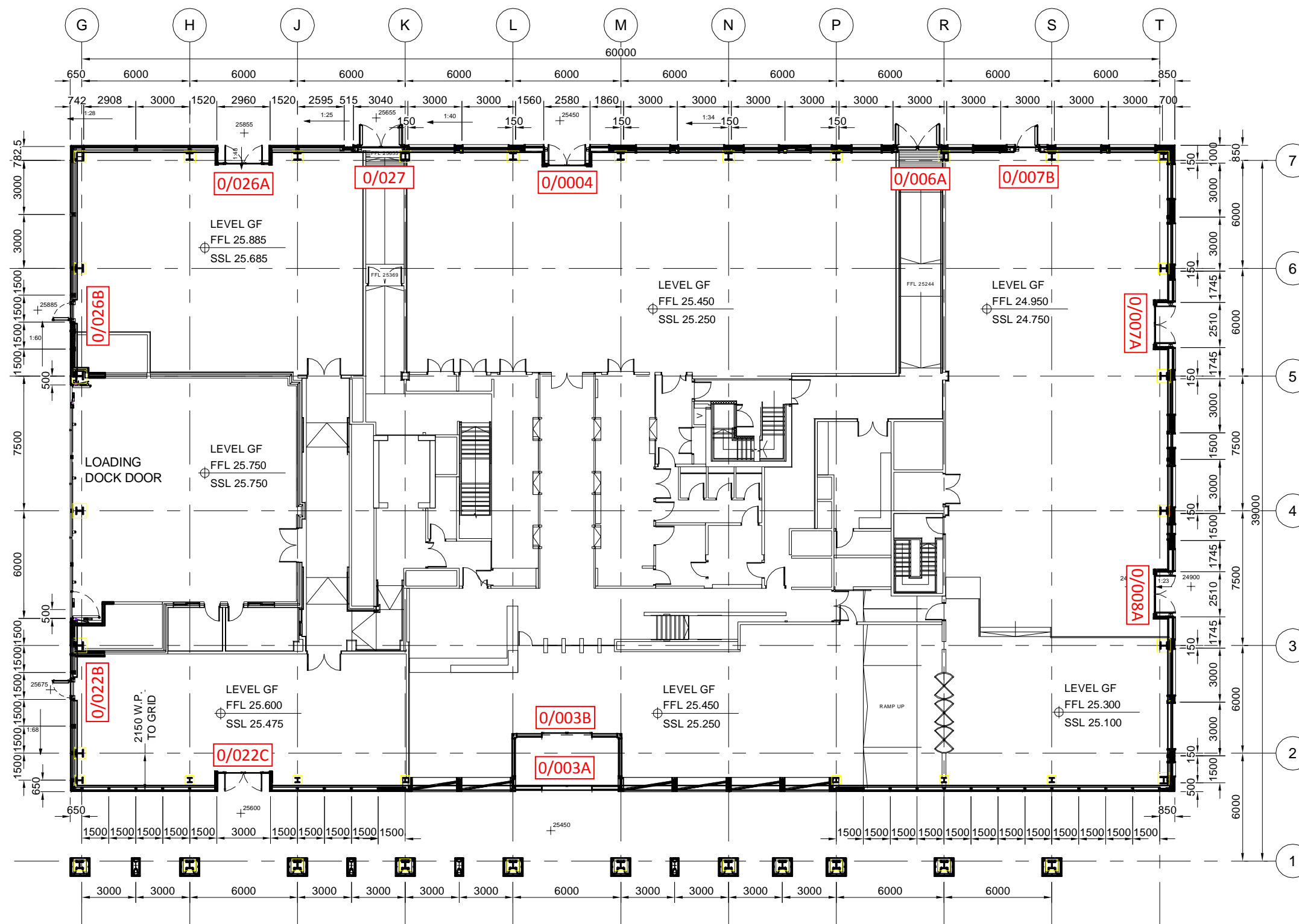
Door type - 1-1/2 leaf non-emergency with Access Control

Door operation - Keyed external Thumb-turn internal, Surface mounted door closer, lever handles internal and external, shoot bolts top and bottom on Slave leaf Door access control by others.

Colour - EV1 Silver Anodised outside, RAL 9003 inside

Notes - Request for Exit, Break Glass, Maglock, Position Switch and Card Reader by others.
See Section 3.

5. Door Location



1 GA PLAN - GROUND LEVEL
Scale: 1:250

DO NOT SCALE : IF IN DOUBT ASK!

THIS DRAWING REMAINS THE PROPERTY OF McMULLEN FACADES LTD AND SHOULD NOT BE COPIED NOR ITS CONTENTS DIVULGED WITHOUT PRIOR CONSENT

Signed: C.HODGKINSON Internal Quality Check
Date: 17/06/2016

30/06/16	ST	30/06/16	30/06/16
17/06/16	ST	17/06/16	17/06/16

Revision	Check	Description	Date

Contract: KINGS CROSS S2

Architect: MOSSISSIAN ARCHITECTURE

Main Contractor: CARILLION

Drawing: GENERAL ARRANGEMENT PLAN

LEVEL 0

Drawn By: M.QUIBAEL Date: 18/02/2016

Scale: 1:250@A3 MFL No.: 3129-1GF

DMS Code: KXC-S2-001-Y-3129-21-1GF Revision: B

DRAWING STATUS
STATUS INDICATES:
A - DRAWING FULLY APPROVED
B - APPROVED SUBJECT TO COMMENT
C - DRAWING NOT APPROVED

McMullen Facades Limited
66 Lurgan Road, Moira,
Craigavon, Co. Armagh BT67 0LX
Tel: +44 (0) 28 9261 9688
Fax: +44 (0) 28 9261 9711
Email: design@mcmullenfacades.com



1 GA PLAN - LEVEL 2
Scale: 1:250

DO NOT SCALE : IF IN DOUBT ASK!
 THIS DRAWING REMAINS THE PROPERTY OF McMULLEN FACADES LTD AND SHOULD NOT BE COPIED NOR ITS CONTENTS DIVULGED WITHOUT PRIOR CONSENT

Signed: C.HODGKINSON
 Date: 17/06/2016
 Internal Quality Check

No.	Intd	Intd	Date	
B	PS	ST	30/06/16	FACADE LAYOUT UPDATED 30/06/16

Revision	Check	Description	Date

Contract: KINGS CROSS S2
 Architect: MOSSESIAN ARCHITECTURE
 Main Contractor: CARILLION

Drawing: GENERAL ARRANGEMENT PLAN
 LEVEL 2
 Drawn By: M.QUIBAEL Date: 17/02/2016

Scale: 1:250@A3 MFL No.: 3129-102
 DMS Code: KXC-S2-001-Y-3129-21-102 Revision: B

DRAWING STATUS
 STATUS INDICATES:
 A - DRAWING FULLY APPROVED
 B - APPROVED SUBJECT TO COMMENT
 C - DRAWING NOT APPROVED

McMullen Facades Limited
 66 Lurgan Road, Moira,
 Craigavon, Co. Armagh BT67 0LX
 Tel: +44 (0) 28 9261 9688
 Fax: +44 (0) 28 9261 9711
 Email: design@mcmullenfacades.com

B

McMullen
Part of the Lakesmere Group

1

GA PLAN - LEVEL 3

Scale: 1:250

DO NOT SCALE : IF IN DOUBT ASK!

THIS DRAWING REMAINS THE PROPERTY OF McMULLEN FACADES LTD AND SHOULD NOT BE COPIED NOR ITS CONTENTS DIVULGED WITHOUT PRIOR CONSENT

Signed: C.HODGKINSON Internal Quality Check
Date: 17/06/2016

B PS ST 30/06/16 FACADE LAYOUT UPDATED 30/06/16

No. Intd Intd Date

Revision Check Description Date

Contract: KINGS CROSS S2

Architect: MOSSESIAN ARCHITECTURE

Main Contractor: CARILLION

Drawing: GENERAL ARRANGEMENT PLAN LEVEL 3

Drawn By: M.QUIBAEL Date: 17/02/2016

Scale: 1:250@A3 MFL No.: 3129-103

DMS Code: KXC-S2-001-Y-3129-21-103 Revision: B

DRAWING STATUS STATUS INDICATES:

A - DRAWING FULLY APPROVED
B - APPROVED SUBJECT TO COMMENT
C - DRAWING NOT APPROVED

McMullen Facades Limited
66 Lurgan Road, Moira,
Craigavon, Co. Armagh BT67 0LX
Tel: +44 (0) 28 9261 9688
Fax: +44 (0) 28 9261 9711
Email: design@mcmullenfacades.com

M:\Current Contracts - MFL\3129 Kings Cross S2\01 MFL Drawings\1.4 CAD Files\General Plans\Level 3 REV B.dwg, Layout-MFL_A3, 18/07/2016 09:30:45

B



DO NOT SCALE : IF IN DOUBT ASK!

© THIS DRAWING REMAINS THE PROPERTY OF McMULLEN FACADES LTD AND SHOULD NOT BE COPIED NOR ITS CONTENTS DIVULGED WITHOUT PRIOR CONSENT

Signed: C.HODGKINSON Internal Quality Check
Date: 17/06/2016

B	PS	ST	30/06/16	FACADE LAYOUT UPDATED	30/06/16
No.	Intd	Intd	Date		
Revision	Check	Description	Date		
Contract: KINGS CROSS S2					
Architect: MOSSESIAN ARCHITECTURE					
Main Contractor: CARILLION					
Drawing: GENERAL ARRANGEMENT PLAN LEVEL 4					
Drawn By: M.QUIBAEL Date: 17/02/2016					
Scale: 1:250@A3 MFL No.: 3129-104					
DMS Code: KXC-S2-001-Y-3129-21-104 Revision: B					

DRAWING STATUS
STATUS INDICATES:

A - DRAWING FULLY APPROVED
B - APPROVED SUBJECT TO COMMENT
C - DRAWING NOT APPROVED

McMullen Facades Limited
66 Lurgan Road, Moira,
Craigavon, Co. Armagh BT67 0LX
Tel: +44 (0) 28 9261 9688
Fax: +44 (0) 28 9261 9711
Email: design@mcmullenfacades.com

1 GA PLAN - LEVEL 4
Scale: 1:250