

F10/110 Facing brickwork

F30/212 Wall cavity tie

G20/334 Cross laminated timber wall panel to Structural Engineers information

F30/371 Cavity tray

F30/155 Insulation

F30/158 Breather membrane - lapped min 100mm at joints

F30/133 Perpend weephole

F30/756 Brick lintel to SE specification

L10/401 Aluminium soffit plate

L10/401 Outward opening light composite window

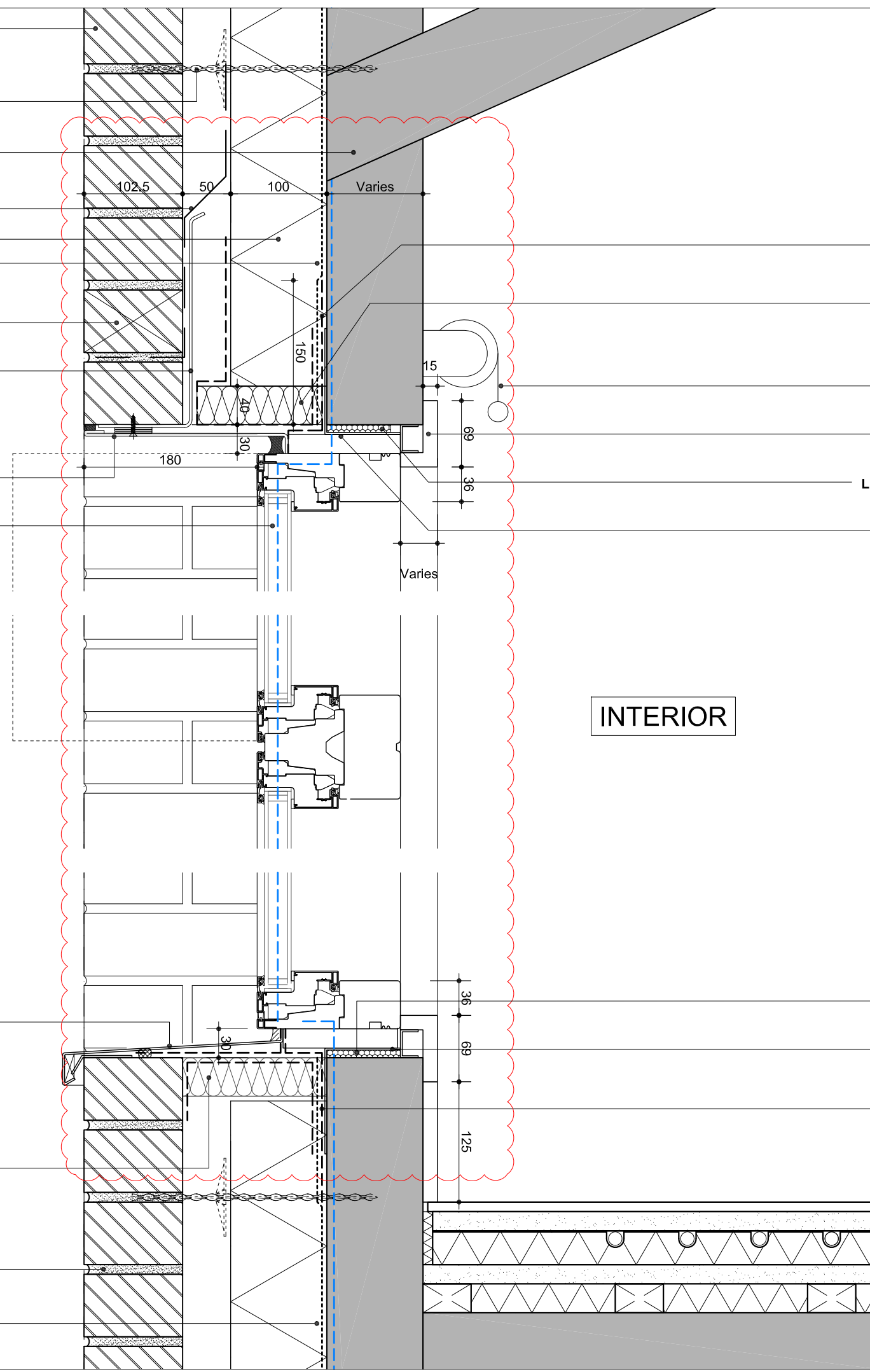
EXTERIOR

L10/401 PPC pressed aluminium window cill flashing. Colour to match window frames. Edge of cills dressed down. Welded stop ends to cill.

F30/181 Insulated cavity closer with integral DPC

5mm recessed mortar joints to facing brickwork

F30/158 Breather membrane - lapped min 100mm at joints



L10/401 EPDM bonded to window frame and CLT and lapped with breather membrane

F30/181 Insulated cavity closer with integral DPC

N10/240 Roller blind

P20/110 window lining

L10/401 Fixing lugs to window manufacturer's requirements

Filler strip by sub-contractor

INTERIOR

Filler strip by sub-contractor

L10/401 Fixing lugs to window manufacturer's requirements

F30/401 EPDM bonded to window frame and CLT and lapped with breather membrane

Do not scale from this drawing. Verify all dimensions on site. Drawing should be read in conjunction with information from all other design consultants and contractors. All drawings in digital format are for reference only, paper copies are available on request.

### CONSTRUCTION

© Maccreanor Lavington Architects

#### NOTES:

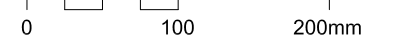
This drawing should be read in conjunction with the architects' complete drawings, schedules and specifications. For structural, building services, landscape, acoustic and fire rating requirements refer to specialists consultants' drawings, reports and specifications.

All elements of construction to be verified by the Contractor as their final design and coordination responsibility prior to construction, without prejudice to the Contractor's responsibility to consider whether other details require further technical development and coordination.

Further design development and/or coordination may be required pending site investigations or site coordination.

All CLT members sizes to Structural Engineers Information, tbc by CLT manufacturer.

Scale:



C1	Construction Issue	CGP	21-11-16
C	VE Redesign / Technical Coordination	HYC	05-08-16
B	VE Redesign	CGP	02-08-16
T2	General Coordination	TO	16-11-15
A	General Coordination	TO	04-11-15
T1	Tender Issue	RM	01-05-15

Rev Details Drwn Date

#### 403 Kingsgate School / Liddell Road

Client: London Borough of Camden

Title: Classroom Window

Section Detail

Scale: 1:5 @ A3

Date: 01-05-2015 Drawn: RM

MLUK / 403 / A / 305 / Rev C1

#### MaccreanorLavington

3rd Floor  
19-21 Nile Street  
London N1 7LL

t +44(0)207 336 73 53  
f +44(0)207 336 76 55  
e uk@ml-architects.com