

Do not scale from this drawing. Verify all dimensions on site. Drawing should be read in conjunction with information from all other design consultants and contractors. All drawings in digital format are for reference only, paper copies are available on request.

CONSTRUCTION

© Maccreanor Lavington Architects

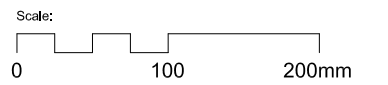
NOTES:

This drawing should be read in conjunction with the architects' complete drawings, schedules and specifications. For structural, building services, landscape, acoustic and fire rating requirements refer to specialists consultants' drawings, reports and specifications.

All elements of construction to be verified by the Contractor as their final design and coordination responsibility prior to construction, without prejudice to the Contractors' responsibility to consider whether other details require further technical development and coordination.

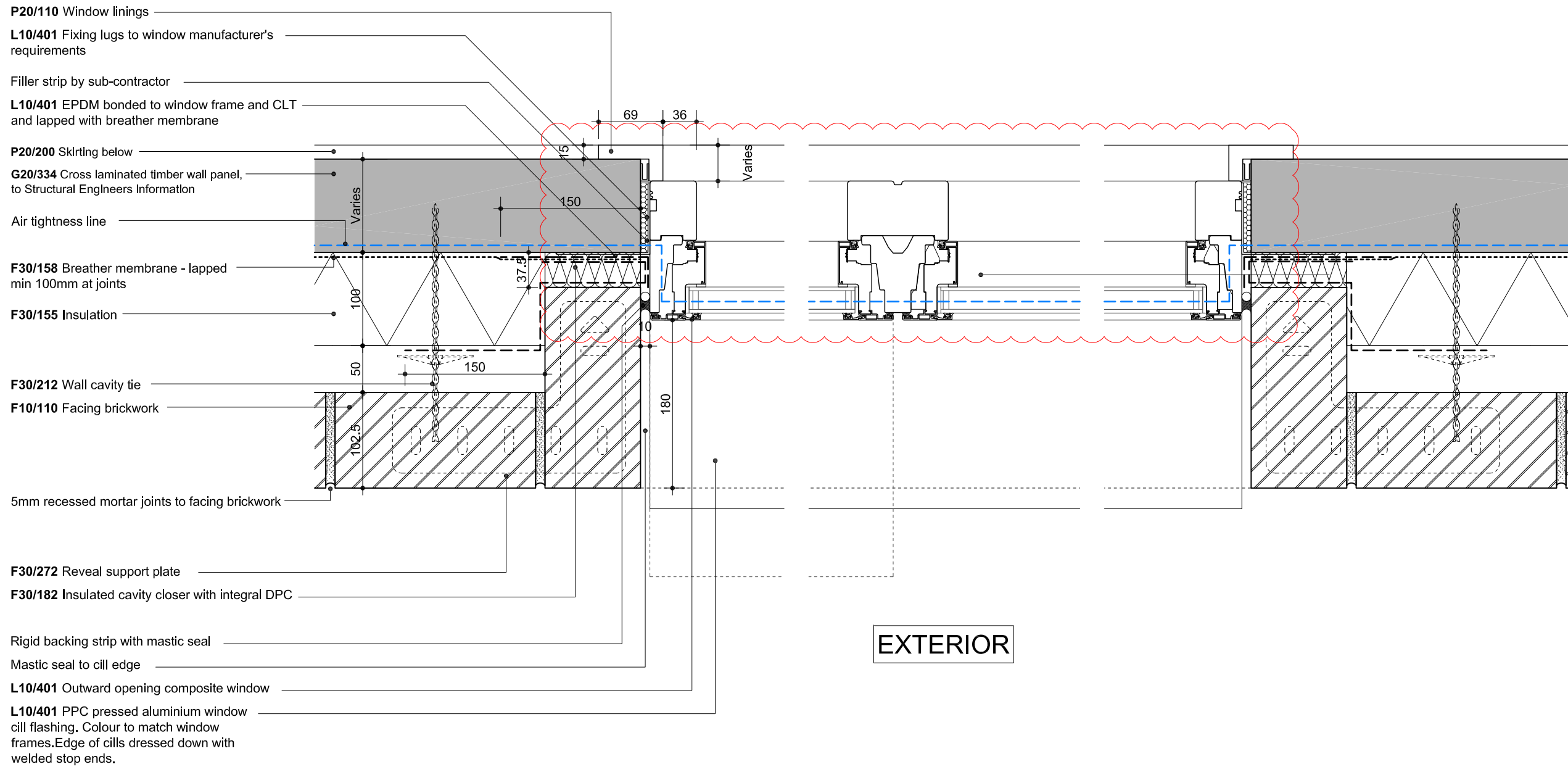
Further design development and/or coordination may be required pending site investigations or site coordination.

All CLT members sizes to Structural Engineers Information, tbc by CLT manufacturer.



INTERIOR

EXTERIOR



- P20/110 Window linings
- L10/401 Fixing lugs to window manufacturer's requirements
- Filler strip by sub-contractor
- L10/401 EPDM bonded to window frame and CLT and lapped with breather membrane
- P20/200 Skirting below
- G20/334 Cross laminated timber wall panel, to Structural Engineers Information
- Air tightness line
- F30/158 Breather membrane - lapped min 100mm at joints
- F30/155 Insulation
- F30/212 Wall cavity tie
- F10/110 Facing brickwork
- 5mm recessed mortar joints to facing brickwork
- F30/272 Reveal support plate
- F30/182 Insulated cavity closer with integral DPC
- Rigid backing strip with mastic seal
- Mastic seal to cill edge
- L10/401 Outward opening composite window
- L10/401 PPC pressed aluminium window cill flashing. Colour to match window frames. Edge of cills dressed down with welded stop ends.

| | | | |
|-----|--------------------------------------|------|----------|
| C1 | Construction Issue | CGP | 21-11-16 |
| D | VE Redesign / Technical Coordination | MJR | 18-08-16 |
| C | VE Redesign / Technical Coordination | HYC | 05-08-16 |
| B | VE Redesign | CGP | 01-08-16 |
| T2 | General Coordination | TO | 16-11-15 |
| A | General Coordination | TO | 04-11-15 |
| T1 | Tender Issue | RM | 01-05-15 |
| Rev | Details | Drwn | Date |

403 Kingsgate School / Liddell Road

Client: London Borough of Camden

Title: Typical Window

Plan Detail

Scale: 1:5 @ A3

Date: 01-05-2015

Drawn: RM

MLUK / 403 / A / 300 / Rev C1

MaccreanorLavington

3rd Floor
19-21 Nile Street
London N1 7LL

t +44(0)207 336 73 53
f +44(0)207 336 76 55
e uk@ml-architects.com