





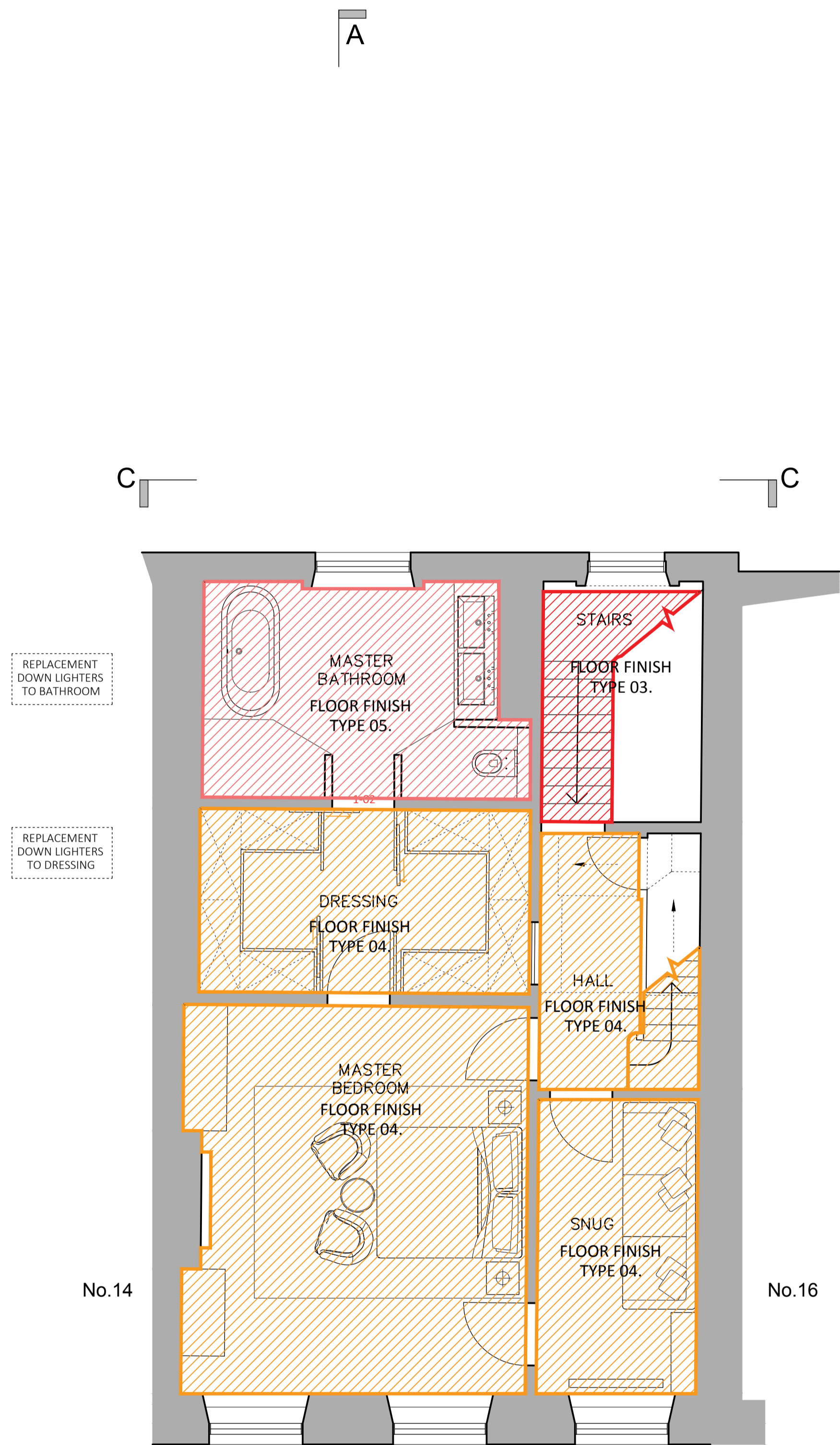
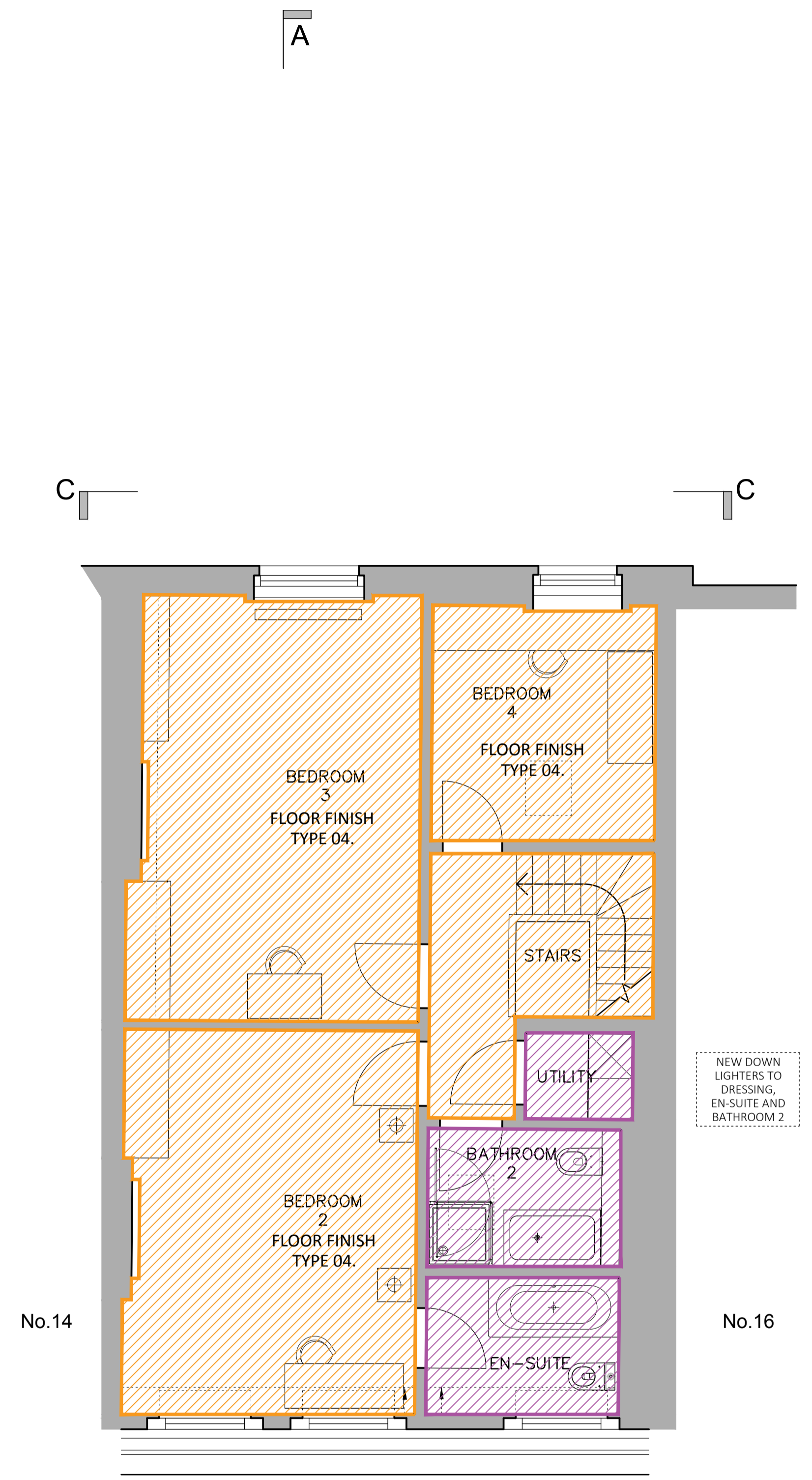


Floor Finish types:

01.	600 x600 porcelain grey 'stone' tile	
02.	10mm solid on ply Engineered grey stained oak 150mm planks	
03.	Carpet runner and existing stone (stone to be repainted)	
04.	Herringbone 10mm solid on ply Engineered grey stained oak	
05.	Porcelain calacatta 'stone' large tiles	
06.	Porcelain calacatta 'stone' Slab Size tiles	
06.	Porcelain calacatta 'stone' Slab Size tiles	
06.	As noted.	



SECOND FLOOR



THIRD FLOOR

client	Amit & Devika Chadha	
project	15 Park Square East, London NW1 4LH Project	
drawing	Floor Finishes Second, and Third Floors	

date	scale	drawn by
04/01/17	1:50 at A1	JC
drg.no.		revision
FOD_318		-