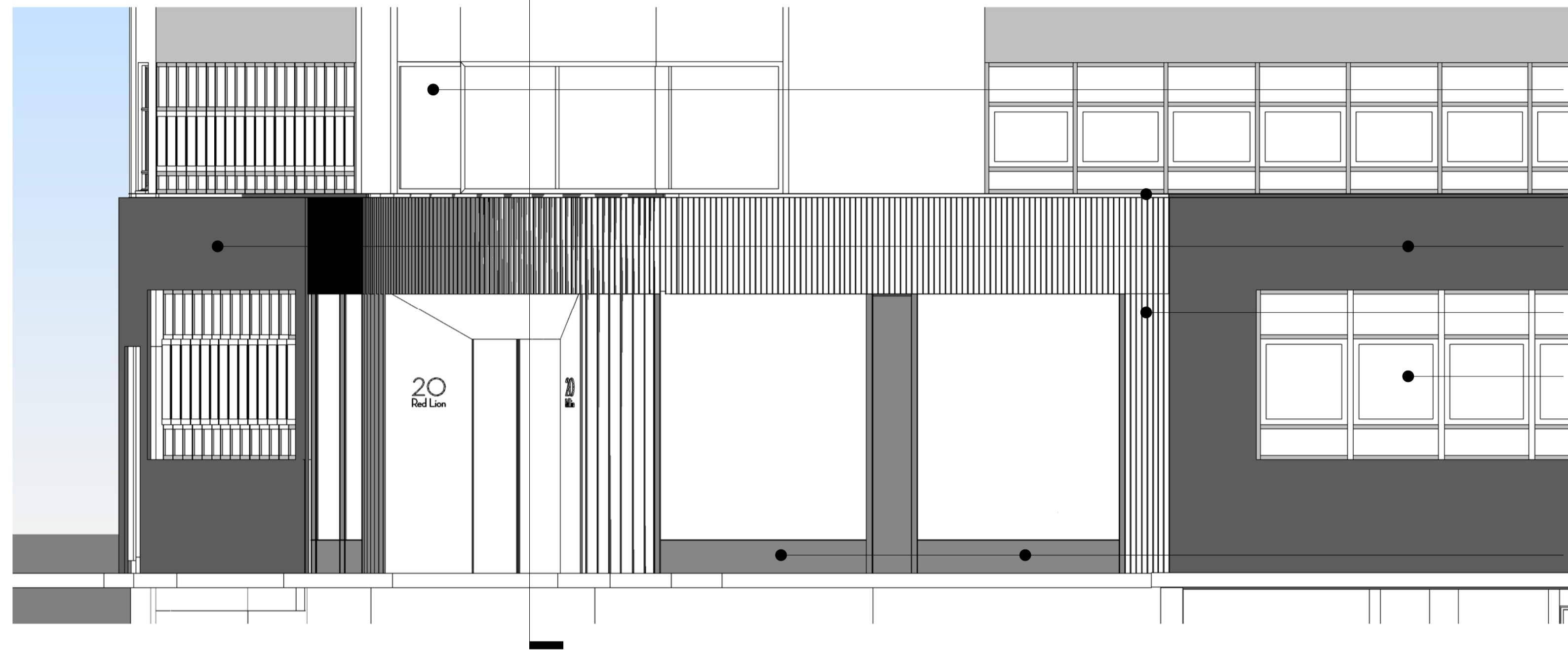


4 X\_EE(00)01\_XX



New back painted glazed panel

Trim. Lighting above section with fins

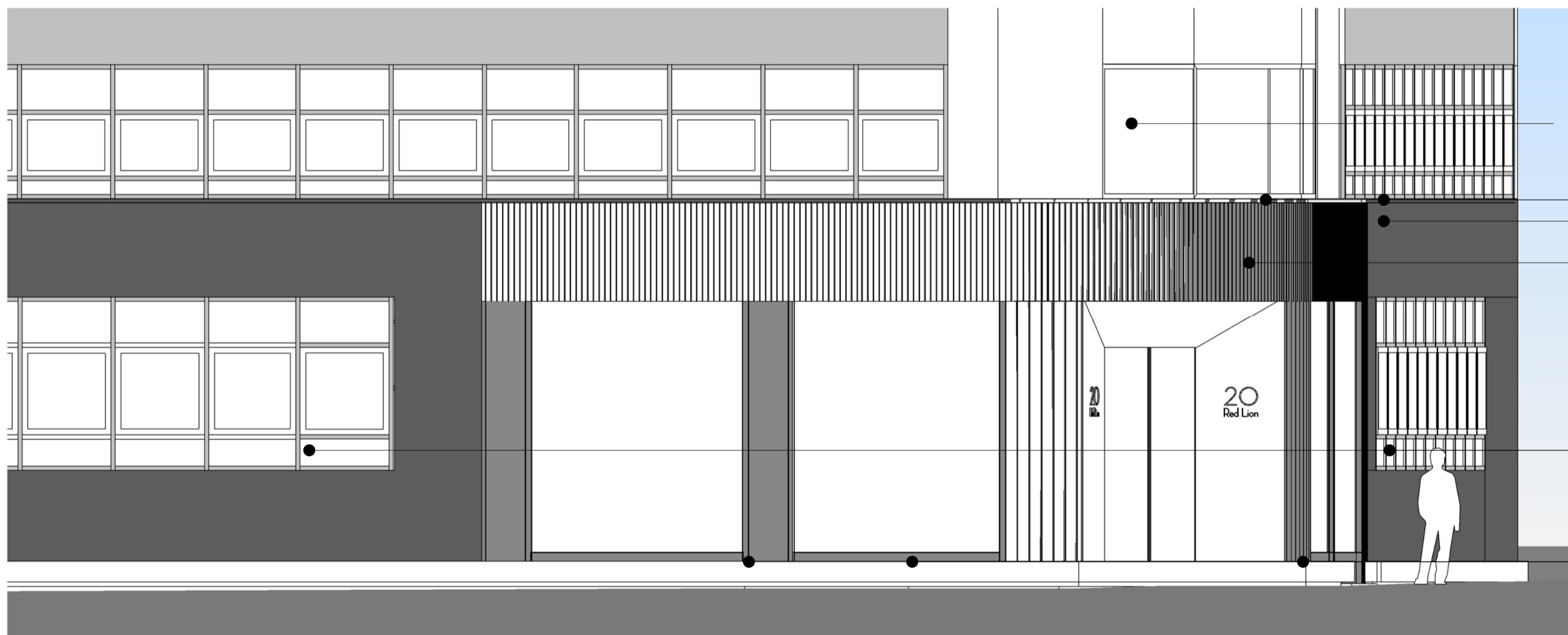
Black stone

Black Metal Fins with Light Grey Metal Panels Backing

Existing metal frame windows

Metal panels

1 Proposed - South Elevation Detail  
Scale: 1 : 50



New back painted glazed panel

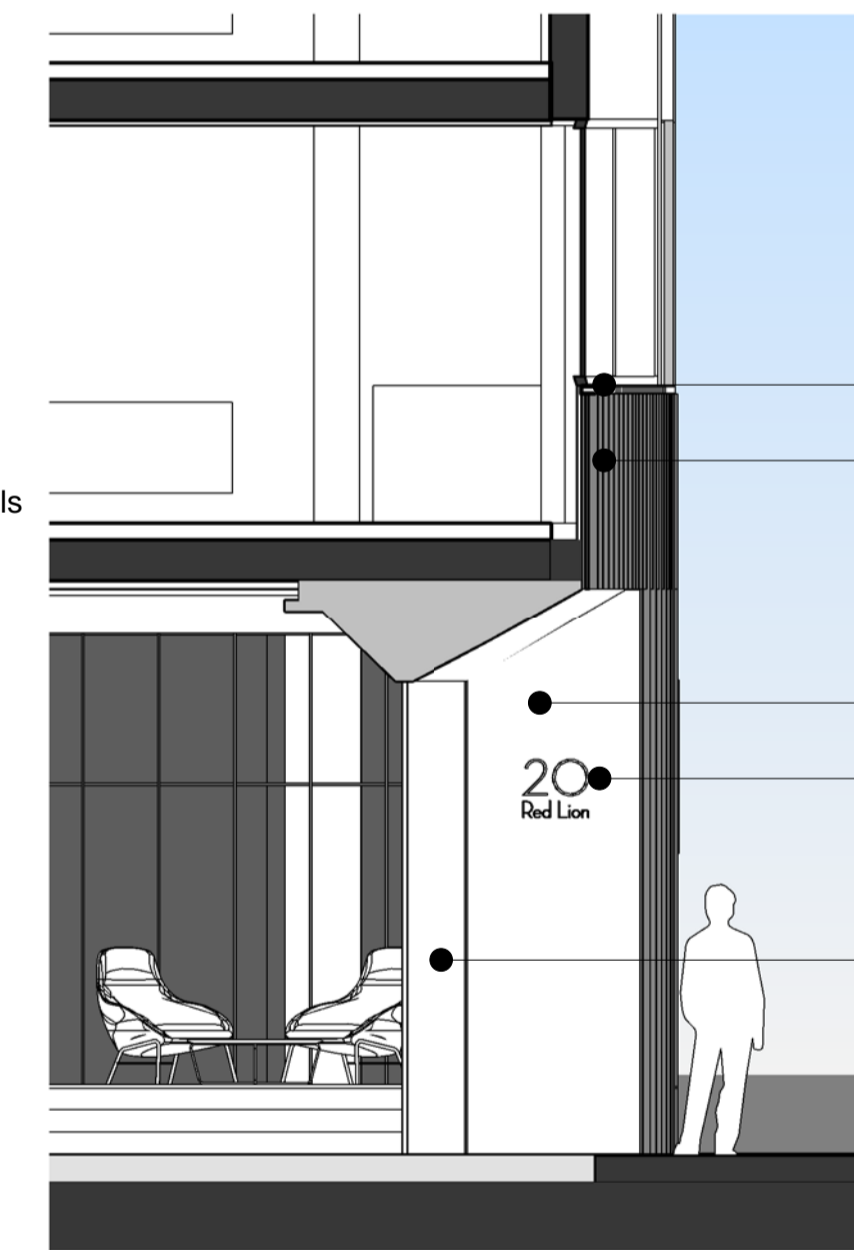
Trim. Lighting above section with fins  
Black stone

Black Metal Fins with Light Grey Metal Panels Backing

Existing metal frame windows

Metal panels

2 Proposed - West Elevation Detail  
Scale: 1 : 50



Trim. Lighting above section with fins

Metal fins

Metal portal

Illuminated building signage

Glass door

4 Entrance - Detail Section  
Scale: 1 : 50



Key Plan:

CDM:



Notes:

Project: **20 Red Lion Street**

Project Number: **2077**

Drawing Title:  
**Planning - External Envelope - Entrance Details**

Drawing No.  
**2077\_X\_EE(00)01\_XX**

Scale@A1: **1 : 50**

Issued for: **Planning**

Revision:  
**P02 13.01.17 Planning Addendum**

**Orms**

1 Oliver's Yard  
55-71 City Road  
London  
EC1Y 1HQ  
0207 833 8533  
orms@orms.co.uk  
orms.co.uk

Do not scale. All dimensions to be confirmed on site. Information contained in this drawing is the sole copyright of Orms designers + architects ltd and is not to be reproduced without permission.