





Introduction

Condition 2: GATE APPEARANCE
(BASED ON APPLICATION 2016/2416/P)

Detailed drawings, or samples of materials as appropriate, in respect of the following, shall be submitted to and approved in writing by the local planning authority before the relevant part of the work is begun:

a) Plan, elevation and section drawings and manufacturer's specification details of the proposed vehicle and pedestrian gates on the northern boundary of the site as shown in drawing no. MMA(10)100_P2.

The relevant part of the works shall be carried out in accordance with the details thus approved and all approved samples shall be retained on site during the course of the works.

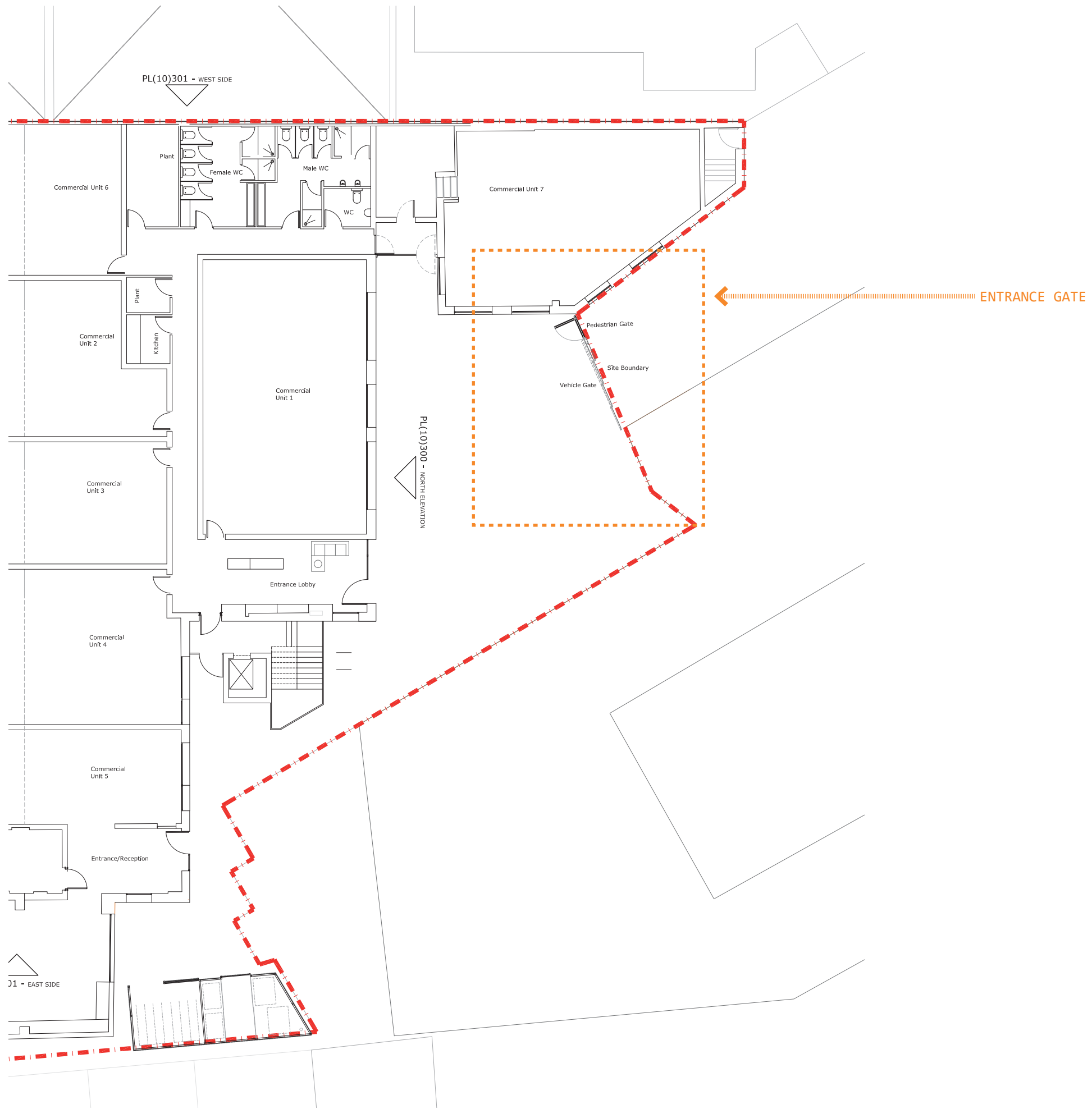
The relevant part of the works shall be carried out in accordance with the details thus approved and all approved samples shall be retained on site during the course of the works.

REASON: To safeguard the appearance of the premises and the character of the immediate area in accordance with the requirements of policy CS14 of the London Borough of Camden Local Development Framework Core Strategy and policy DP24 of the London Borough of Camden Local Development Framework Development Policies.

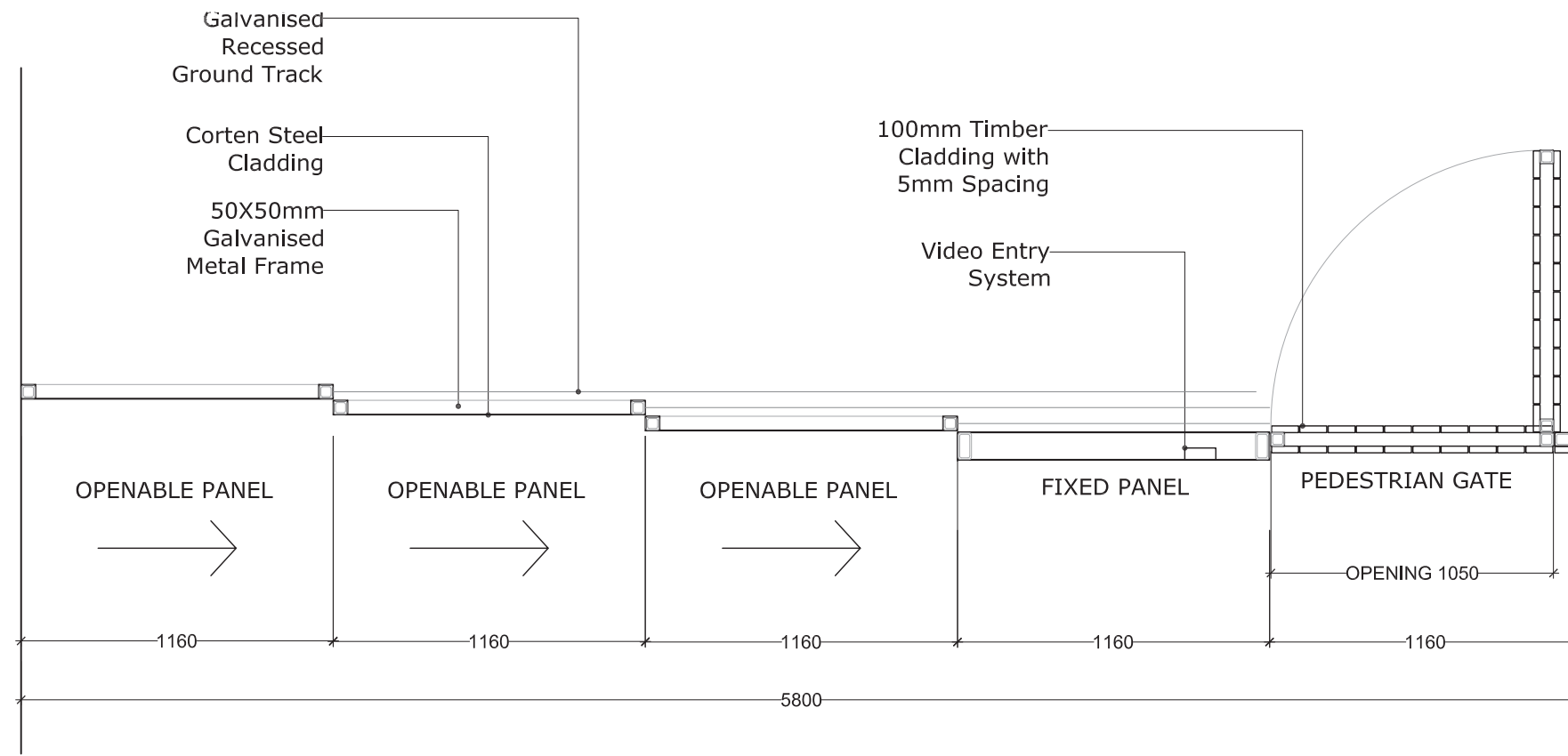


Site Plan

1:200

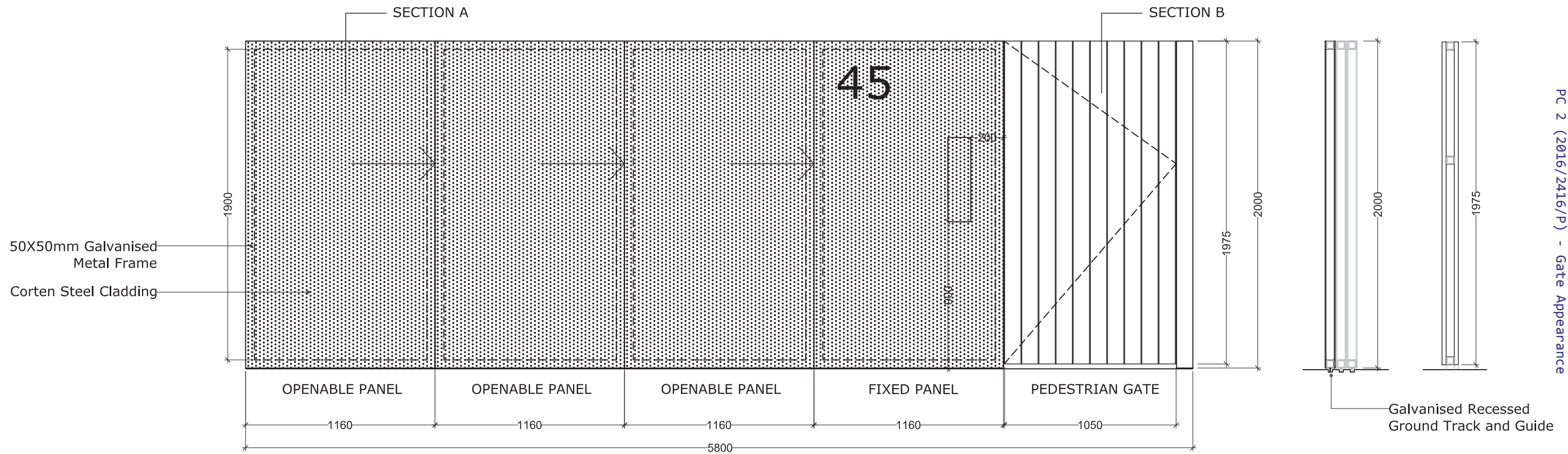


Gate Plan



Gate Elevation

Sections A-A and B-B



PC 2 (2016/2416/P) - Gate Appearance

Rev.	Description	Date	By
P1	Issued for Information	05/01/17	CK
P2	Revised Information for Planning	12/01/17	CK

Notes:
 - Drawing is for Design Intent
 - Gate to be an electric telescopic gate with 3 opening panels as per the drawing above.
 - Intercom/Video Entry for pedestrian gate and vehicle gate as well as fob controlled.
 - Specialist Designer/Manufacturer to produce factory drawings for discussion/approval.

Tender
 45 Holmes Road
 GHR Construction
Entrance Gate - Closed

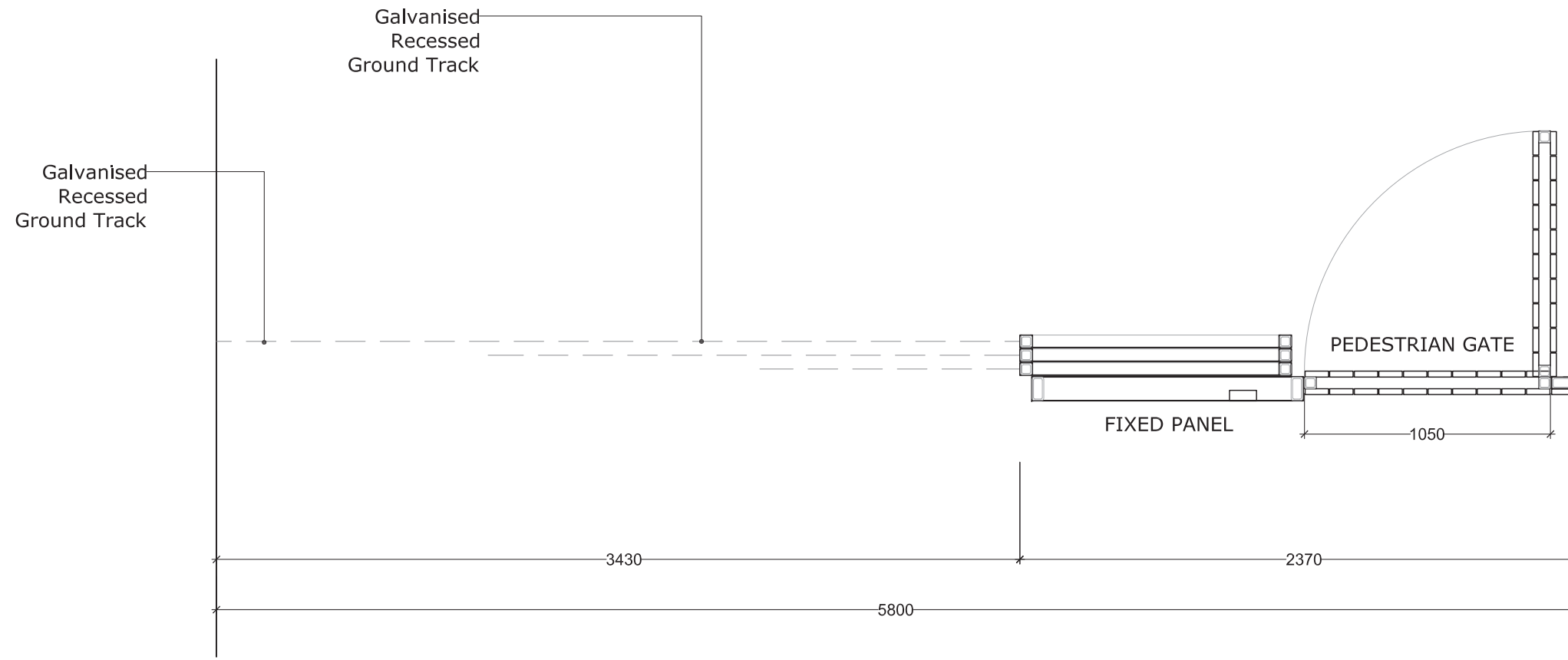


©Lynas Smith 2017
 Do not reproduce without permission of the owner
 This drawing had been produced for MMSL Ltd and is not intended for use by any other person or for any other purpose.
 Original drawing is A1.

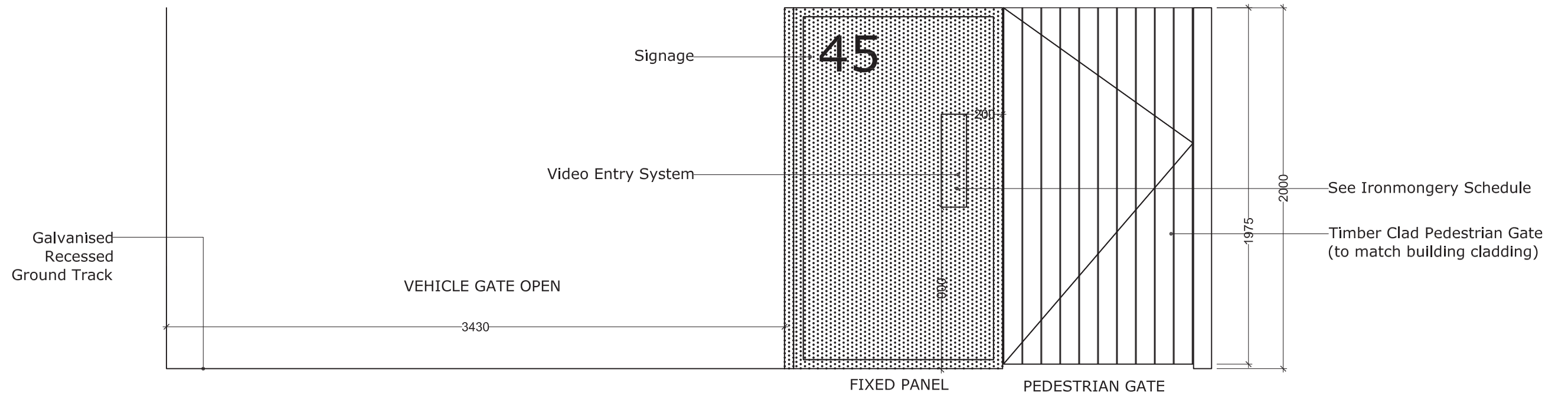
Drawn by: CK Reviewed by: KS
 Project No: 1682

1 : 25 (A3)
 (36)900 / P2

Gate Plan



Gate Elevation



PC 2 (2016/2416/P) - Gate Appearance

Rev.	Description	Date	By
P1	Issued for Information	05/01/17	CK
P2	Revised Information for Planning	12/01/17	CK

Notes:

- Drawing is for Design Intent
- Gate to be an electric telescopic gate with 3 opening panels as per the drawing above.
- Intercom/Video Entry for pedestrian gate and vehicle gate as well as fob controlled.
- Specialist Designer/Manufacturer to produce factory drawings for discussion/approval.

Tender

45 Holmes Road
GHR Construction

Entrance Gate - Open

LYNAS SMITH

Glynas Smith 2017
Do not reproduce without permission of the owner
This drawing had been produced for MMS Ltd and is not intended for use by any other person or for any other purpose.
Original drawing is A1.

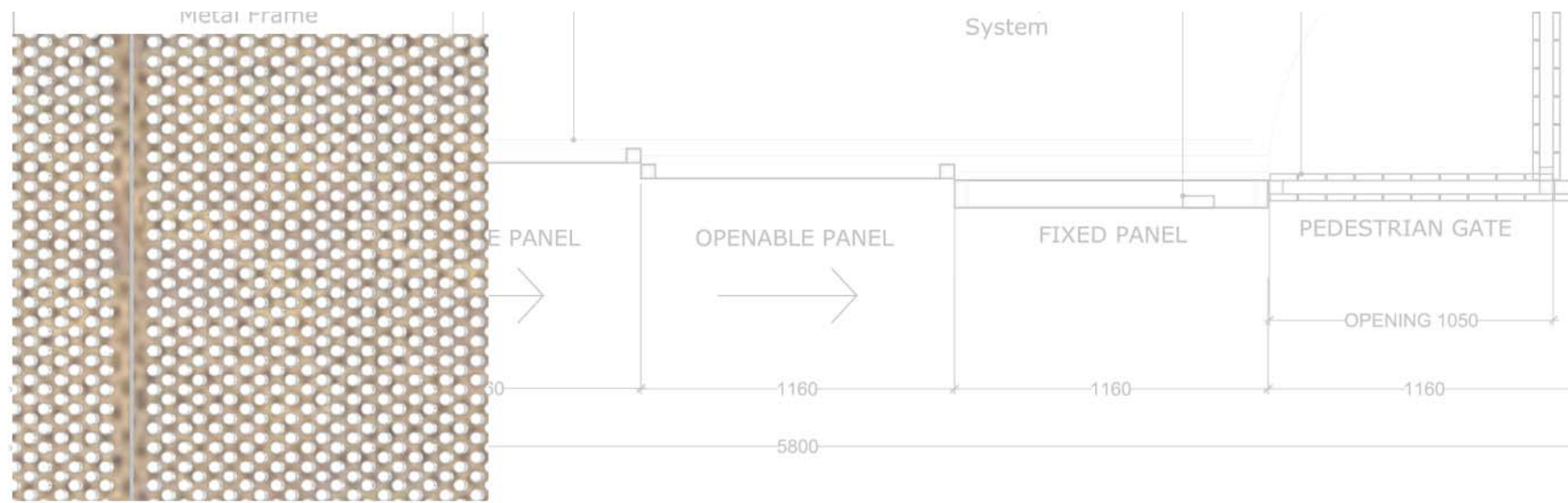
Drawn by: CK Reviewed by: KS
Project No: 1602

1 : 25 (A3)
(36)901 / P2

Materiality Elevation

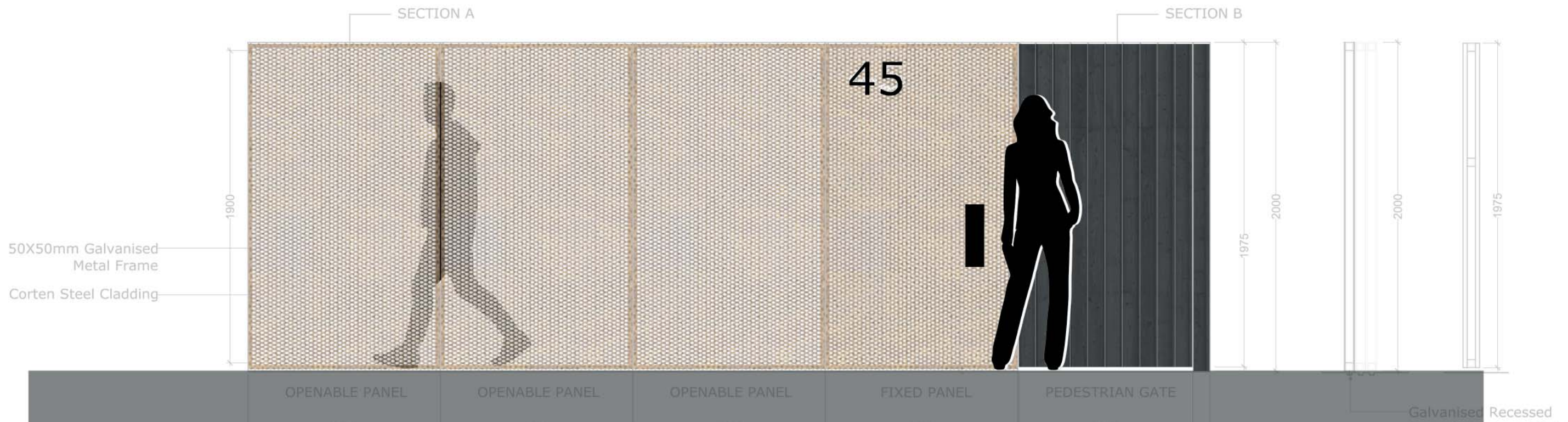


Scale 1:25



Gate Elevation

Sections A-A and B-B



Materials

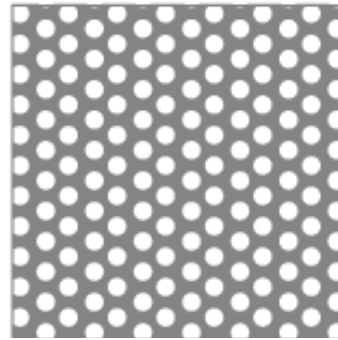
The materiality responds to the materiality of the building and uses the perforated corten steel and black timber cladding. Each are used to denote the vehicle and pedestrian entrance gate as different elements to distinguish between both. The gate will have an integrated video intercom and fob control panel as shown in the drawings.

Pedestrian Gate: Black stained Siberian Larch

Vehicle Gate: Perforated Corten Steel with a hole diameter of 1.96mm which allows visibility through.

Frame: Galvanised Steel

Perforated Corten



82
 Hole Dia: 1.96mm
 Pitch: 3.07mm
 Open Area: 36.75%
 Thickness: 0.6-1.5mm

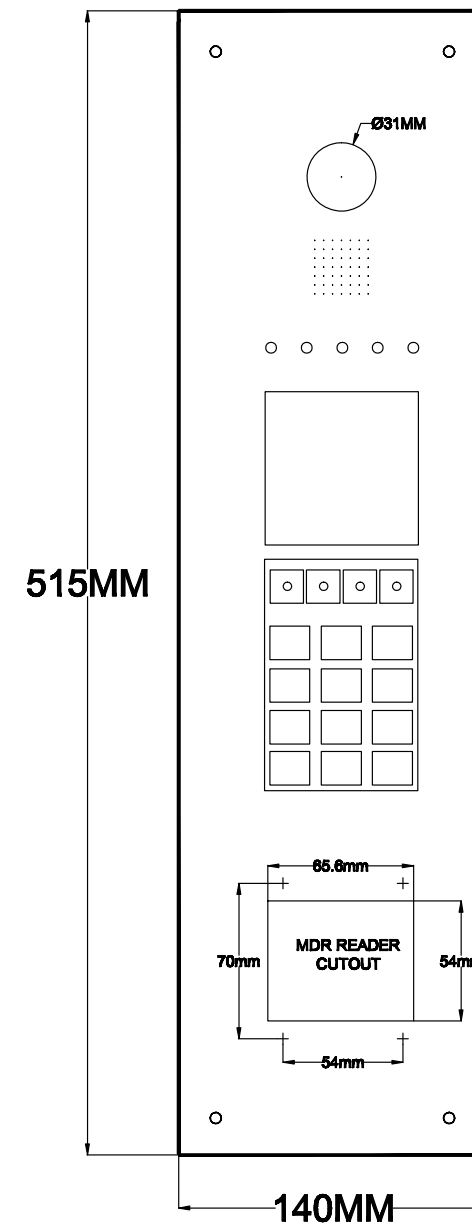


Black Timber



Video Intercom Panel

BLACK DIGITHA PANEL WITH PROX
 BLVDPDIGI
 DIGITHA-0051-SHELDON



DRAWN BY: BPT SECURITY SYSTEMS (AQ) LTD
BACK BOX DIMENSIONS
 465h x 124w x 48d



