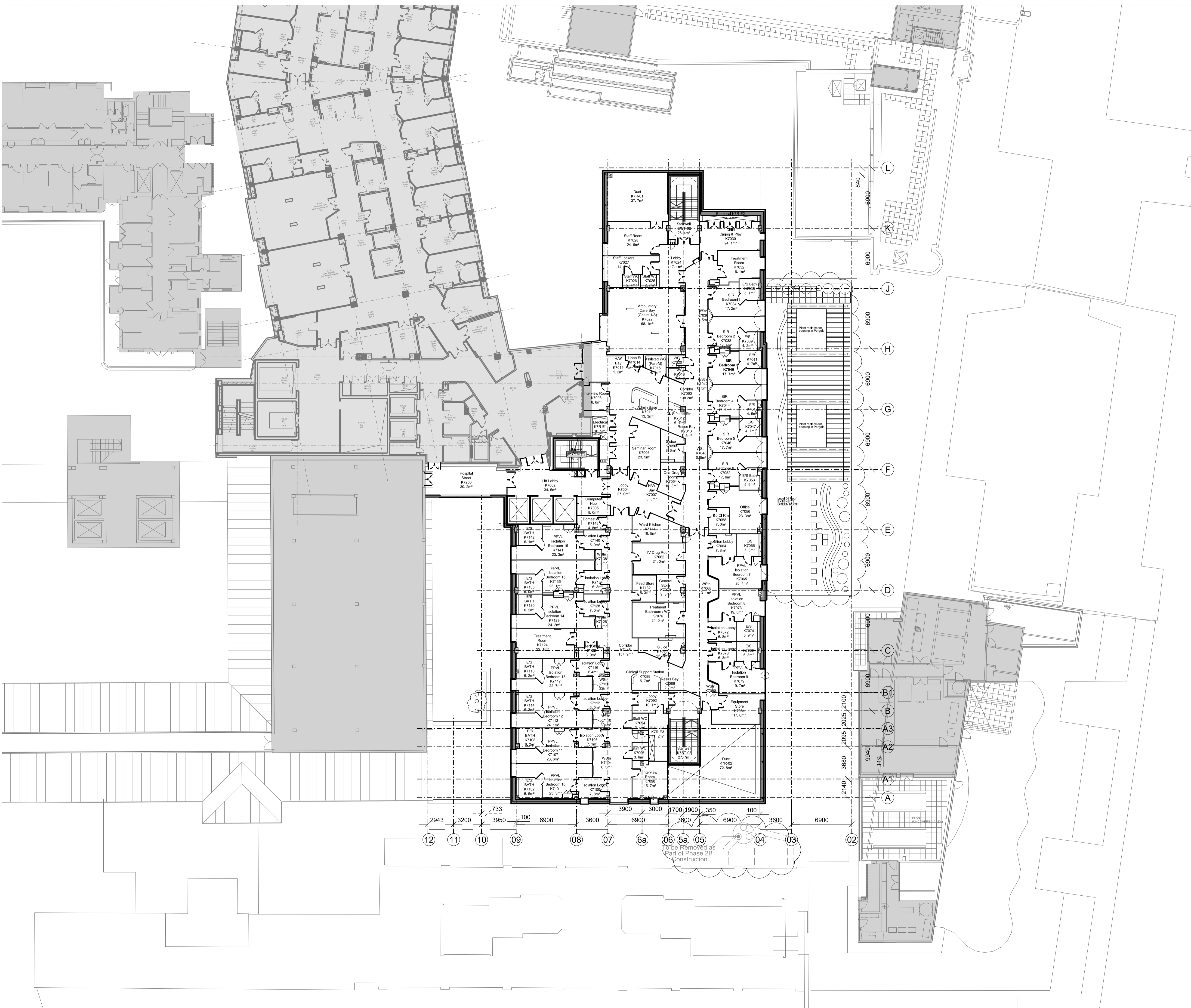


North



- All dimensions to be checked on site
- Do not scale off this drawing
- All dimensions are shown in mm unless otherwise stated
- Refer to drawing issue sheet for purpose of issue
- If in doubt ask
- © Lewelyn Davies Weeks Ltd.

Notes



C5	Issued under DCR A-125 for approval	05.11.15	NR
C4	Issued for concurrent planning approval of details of plant etc. (discharge of Condition 8) and Non Material Amendments (minor changes to elevations)	08.07.15	NR
C3	Issued under DCR A-069 for approval	15.06.15	LD
C2	Amended Quench pipes in accordance to RFI F45	28.07.14	MN
C1	Added Generator Flue in accordance to RFI F45 (subject to planning permission approval)	26.05.14	MN
T2	Room name changes to client request	28.08.13	JA
T1	Updated for Tender Issue	17.01.13	AA
09	Draw no updated	17.08.12	MG
08	Issued For Production Information	31.05.12	MU
07	Drawing updated to structure	30.01.12	MU
06	Drawing updated to GOSH comments	07.08.11	AA
05	South Electrical Rise Amended	18.08.11	rae
04	Drawing updated	23.06.11	AA
03	Fourth Issue - Structure & Cleaners Rm location amended	20/06/2011	MU
02	Third Issue - windows added to external wall	06/05/2011	AA
01	Second Issue - Concrete Structure Update	13/04/2011	rae
00	First Issue	09/02/2011	rae

No. Description Date By

Structural Consultant	Services Consultant
WSP	WSP
Project Manager	Cost Consultant
CT	CT
Project Title	

**Great Ormond Street Hospital Phase 2B**

Client  
Great Ormond Street Hospital for Children  
NHS Trust

Drawing Title  
**General Arrangement Level 7**

Drawing Number **00\_2B\_L7** Revision **C5**

Scale @ A1 **1:200**

Date

Architects