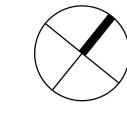


North

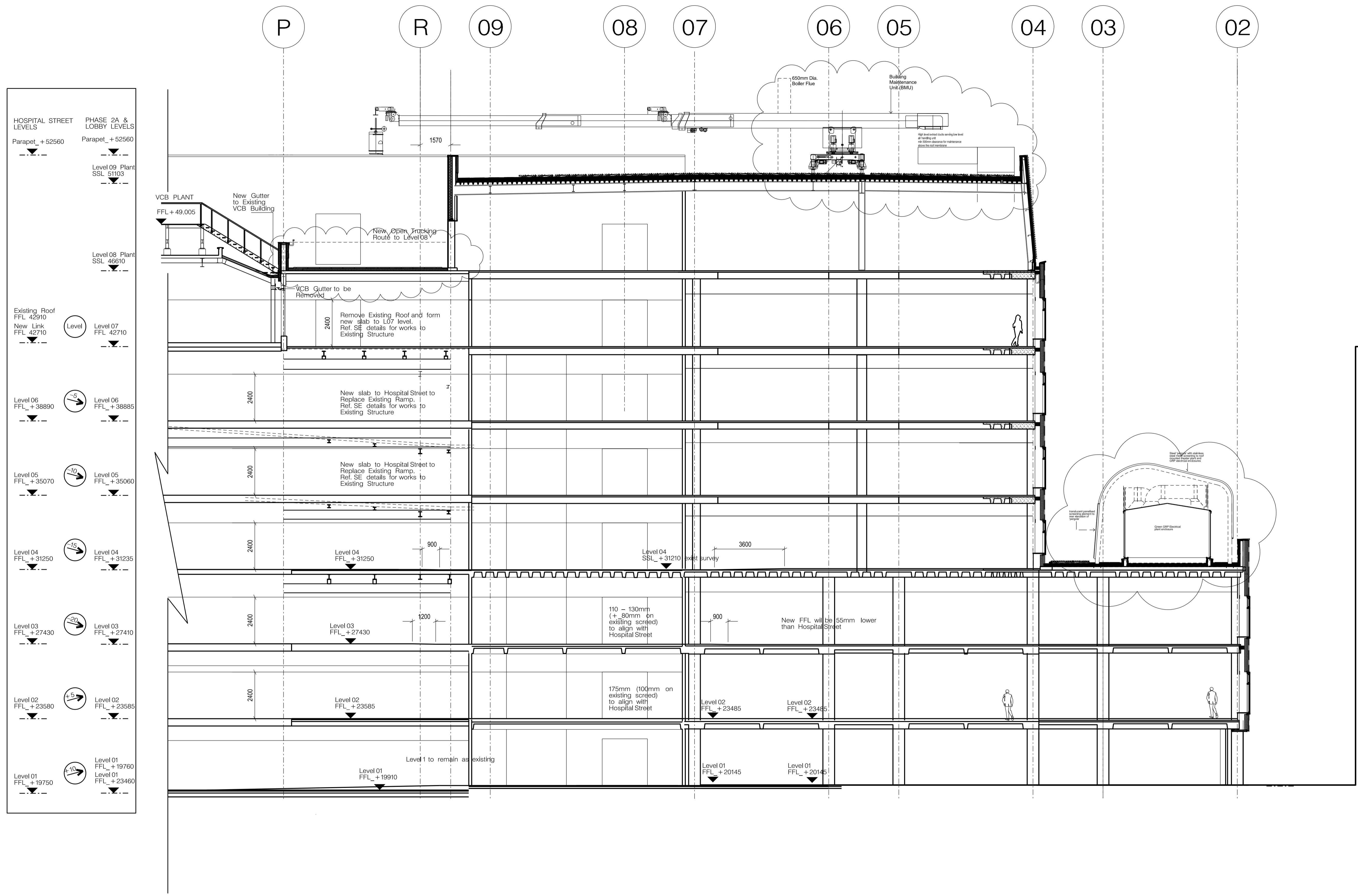
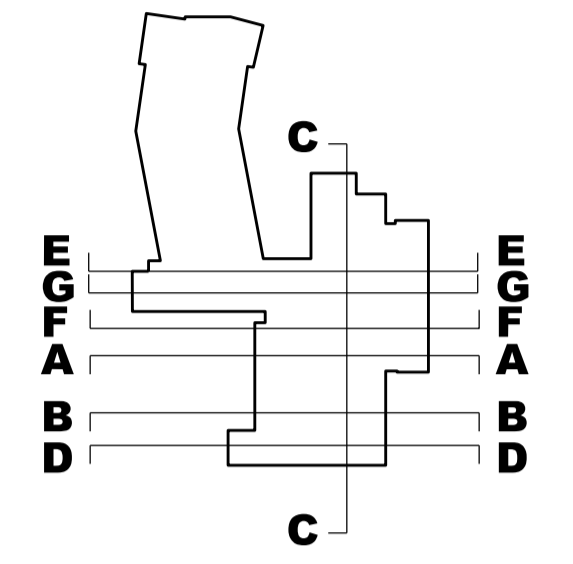


- All dimensions to be checked on site
- Do not scale off this drawing
- All dimensions are shown in mm unless otherwise stated
- Refer to drawing issue sheet for purpose of issue
- If in doubt ask
- © Llewelyn Davies-Weeks Ltd.

Notes

Refer to WSP drawing WSP\_0523\_K\_GA\_500\_08\_101 for full extent of roof mounted plant equipment

Refer to plan and other sections for position of BMU running track



HOSPITAL STREET PHASE 2A & LOBBY LEVELS	
Parapet_ +52560	Parapet_ +52560
Level 09 Plant SSL 51103	Level 09 Plant SSL 51103
Level 08 Plant SSL 46610	Level 08 Plant SSL 46610
Existing Roof FFL 42910	Level 07 FFL 42710
New Link FFL 42710	
Level 06 FFL_ +38890	Level 06 FFL_ +38885
Level 05 FFL_ +35070	Level 05 FFL_ +35060
Level 04 FFL_ +31250	Level 04 FFL_ +31235
Level 03 FFL_ +27430	Level 03 FFL_ +27410
Level 02 FFL_ +23580	Level 02 FFL_ +23585
Level 01 FFL_ +19750	Level 01 FFL_ +19760
	Level 01 FFL_ +23460

Camelia Bonnar Laboratories

C3 Issued for concurrent planning approval of details of plant etc (discharge of Condition 8) and Non Material Amendments (minor changes to elevations)	08.07.15	NR
C2 Issued under DCR A-069 for approval	15.06.15	LD
C1 Construction Issue	26.05.14	MN
T1 Updated for Tender Issue	17.01.13	AA
03 Drg no updated	19.09.12	MG
02 drawing updated to GOSH comments	07.09.11	AA
01 Eternal Wall & Roof Updated	20/05/11	GH

No.	Description	Date	By
Revisions			

Structural Consultant	Services Consultant
Project Manager	Cost Consultant
Project Title	Project Title

Great Ormond Street Hospital Phase 2 B

Client

Great Ormond Street Hospital for Children NHS Trust

Drawing Title

SECTION G-G  
Section trough Hospital Street

Drawing Number 00\_2B\_S\_GG

Revision C3

Scale @ A1  
A1\_1:100 - A3\_1:200

Date

Architects

**LLEWELYN DAVIES**

Architects | Planners | Designers  
www.ldavies.com