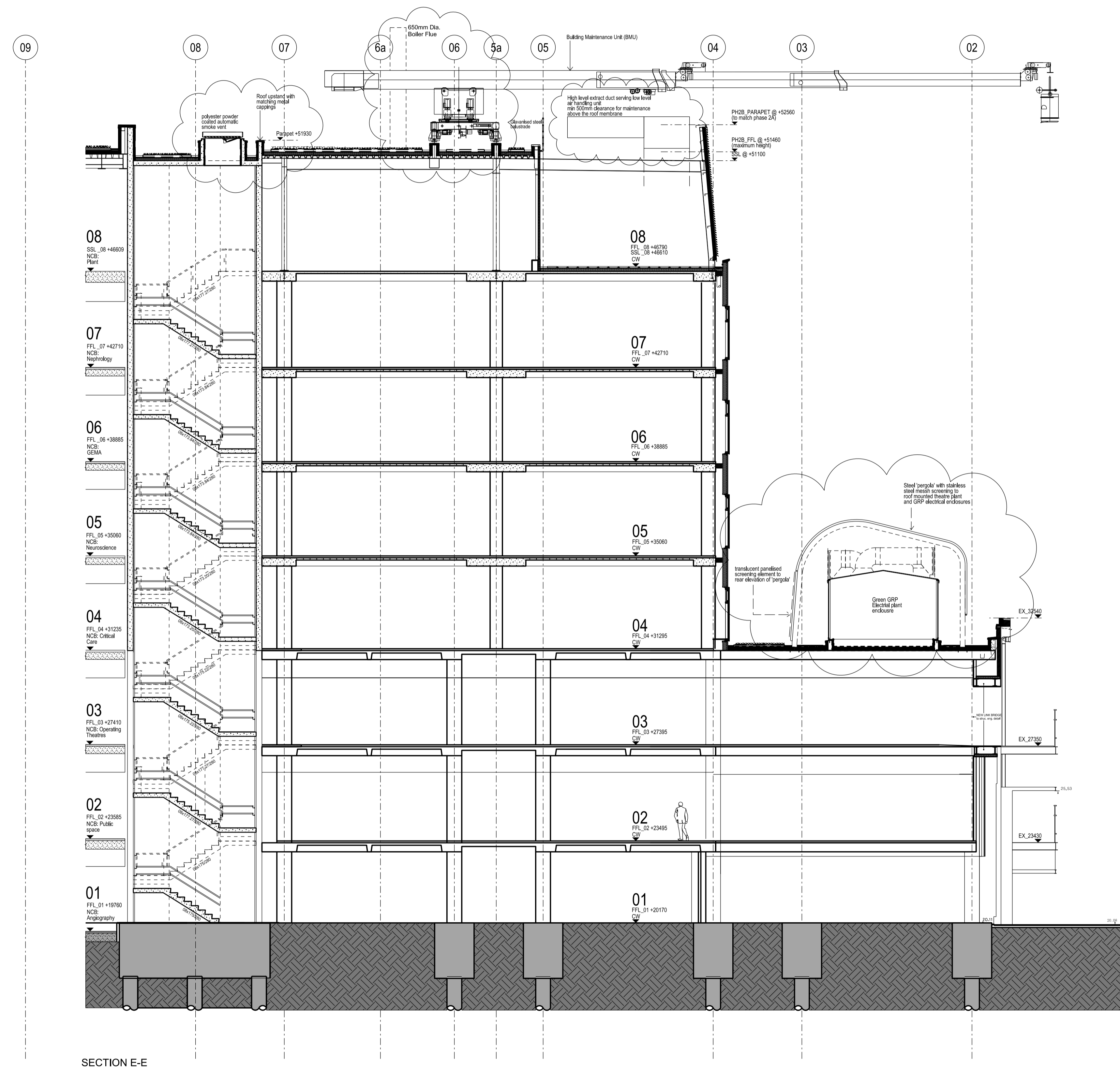


- All dimensions to be checked on site
- Do not scale off this drawing
- All dimensions are shown in mm unless otherwise stated
- Refer to drawing issue sheet for purpose of issue
- If in doubt ask
- © Lewelyn Davies Weeks Ltd.

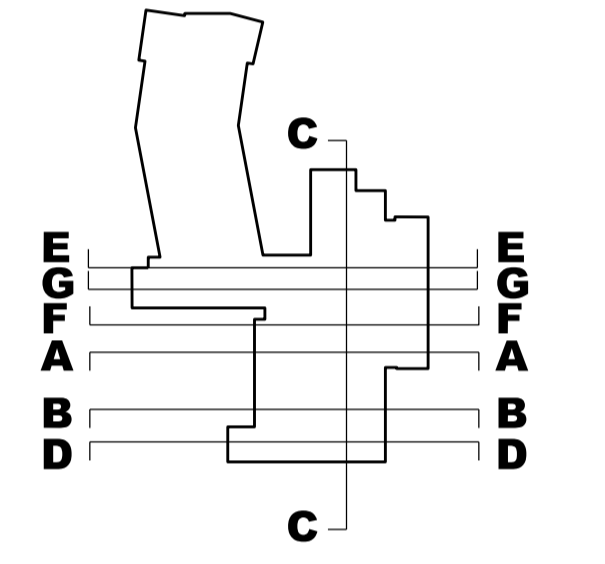
Notes

Refer to WSP drawing WSP_0523_K_GA_500_08_101 for full extent of roof mounted plant equipment

Refer to plan and other sections for position of BMU running track



SECTION E-E



C3 Issued for concurrent planning approval of details of plant etc. (discharge of Condition 8) and Non Material Amendments (minor changes to elevations)	08.07.15	LD
C2 Issued under DCR A-069 for approval	15.06.15	LD
C1 Construction Issue	26.05.14	MN
T1 Updated for Tender Issue	17.01.13	AA
Roof updated to reflect current plant layout		
04 Drg no updated	19.09.12	MG
03 drawing updated to GOSH comments	07.09.11	AA
02 External Wall & Roof updated	20.05.11	GH
01 External Wall & Floor Level amended	06.12.10	GH

No.	Description	Date	By
	Revisions		

Structural Consultant	Services Consultant
Project Manager	Cost Consultant
Project Title	

Great Ormond Street Hospital
Phase 2 B

Client
Great Ormond Street Hospital for Children
NHS Trust

Drawing Title
SECTION E-E
Section north of hospital street, through CW staircase

Drawing Number
00_2B_S_EE

Revision
C3

Scale @ A1
A1_1:100 - A3_1:200

Date

Architects