

NOTE:  
THIS DRAWING IS SUBJECT TO COPYRIGHT  
ALL DIMENSIONS SHALL BE CHECKED ON SITE AND THE ARCHITECT  
SHALL BE NOTIFIED OF ANY DISCREPANCIES PRIOR TO WORK  
COMMENCING.

PLANS HAVE BEEN BASED ON CAD DATA PROVIDED BY THE CLIENT  
WHICH HAS NOT BEEN CHECKED FOR ACCURACY

NOTES:

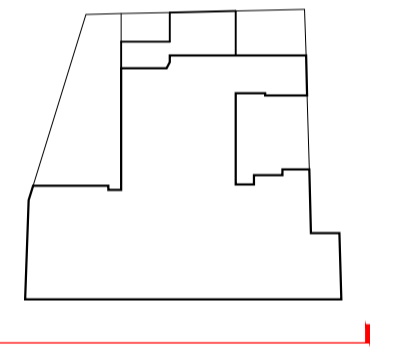
**MATERIALS & FINISHES**

1. NEW ILLUMINATED GLASS CANOPY WITH STAINLESS STEEL FIXINGS
2. NEW FULL HEIGHT GLASS DOOR WITH AUTOMATIC OPENING
3. FULL HEIGHT DOUBLE GLAZED FACADE
4. FULL HEIGHT GLAZED PASS DOOR
5. FIXED GLAZED INFILL PANEL
6. HOTEL ILLUMINATED SIGNAGE LOCATIONS
7. GLASS DOOR AND INFILL PANELS
8. NEW PAVING WITH INMA TEGRAL UPLIGHTS (Hatching indicative)
9. NEW ILLUMINATED SOFFIT

**LIGHTING**

- A - LED EDGE LIGHT TO CANOPY - 200 LUX
- B - LED EDGE LIGHT TO CORNICE - 200 LUX
- C - LED EDGE LIGHTS CONCEALED IN FRAMED SIGN - 300 LUX
- D - LED RECESSED DOWNLIGHTS - 600 LUX
- E - APPLIED LETTERING WITH HALO EDGE LIGHTING - 300 LUX
- F - NON ILLUMINATED SIGNAGE

**KEY PLAN**



NO.	DESCRIPTION	DATE	DR BY
P1	First Issue	14.04.16	CD
P2	Proposed Roof Extension Added	08.06.16	OR
P3	Extension omitted - Porte Cochere omitted Draft Issue for planning	27.09.16	DS
P4	Issue for Planning	14.10.16	DS
P5	Issue for Planning - Revised submission	10.11.16	CD
P6	Lighting Note added	23.12.16	PX

THIS DRAWING SUBJECT TO COPYRIGHT

CLIENT  
SHIVA KINGSWAY LTD

PROJECT  
KINGSWAY HALL HOTEL

TITLE  
FRONT ELEVATION - GREAT QUEEN STREET  
PROPOSED

DATE 14.04.16 SCALE @ A1 1:100

JOB NO 234KHH DRAWN BY PX CHECKED GR

DRAWING NO 300 REVISION P6

**rayholearchitects**

9th floor, 89 park lane  
croydon, london  
CR0 1JD  
Tel: +44 (0) 20 8662 4600  
Email: info@rh-architects.com

