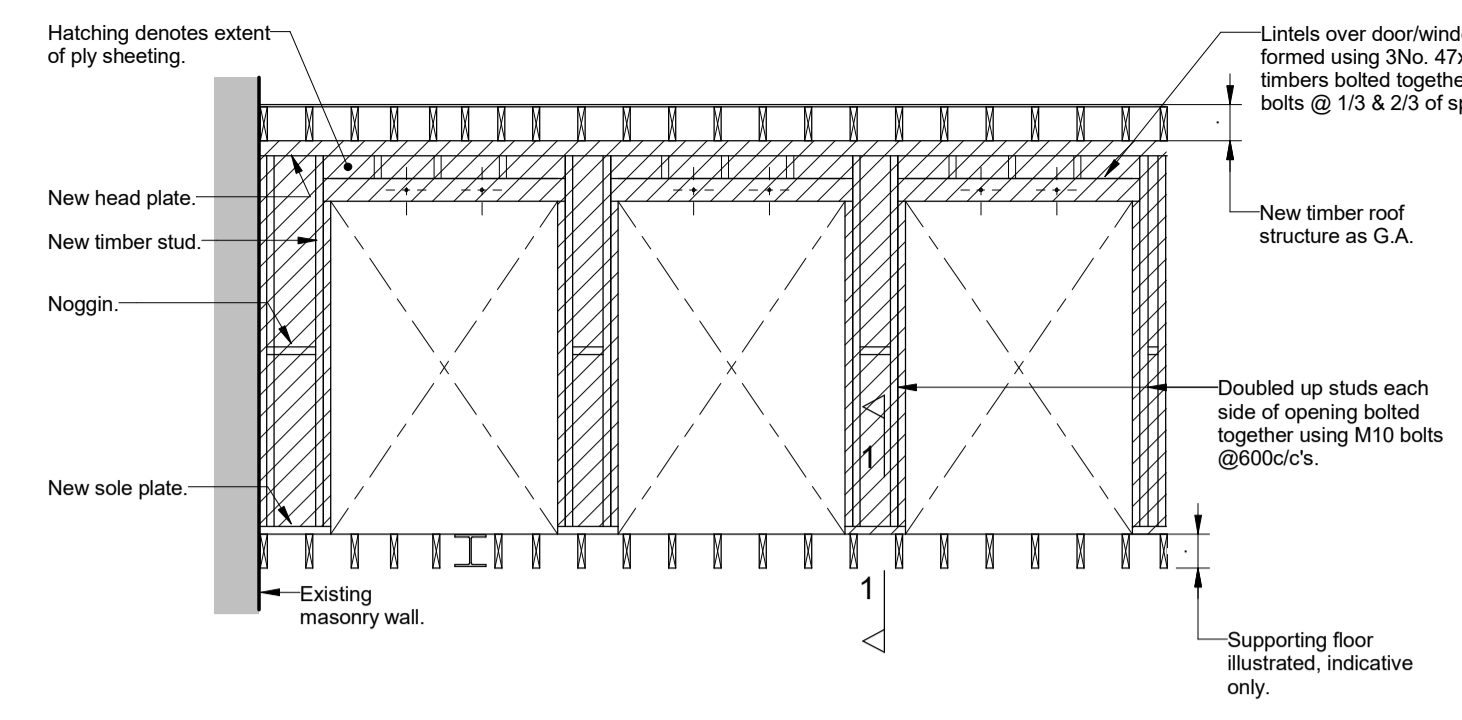
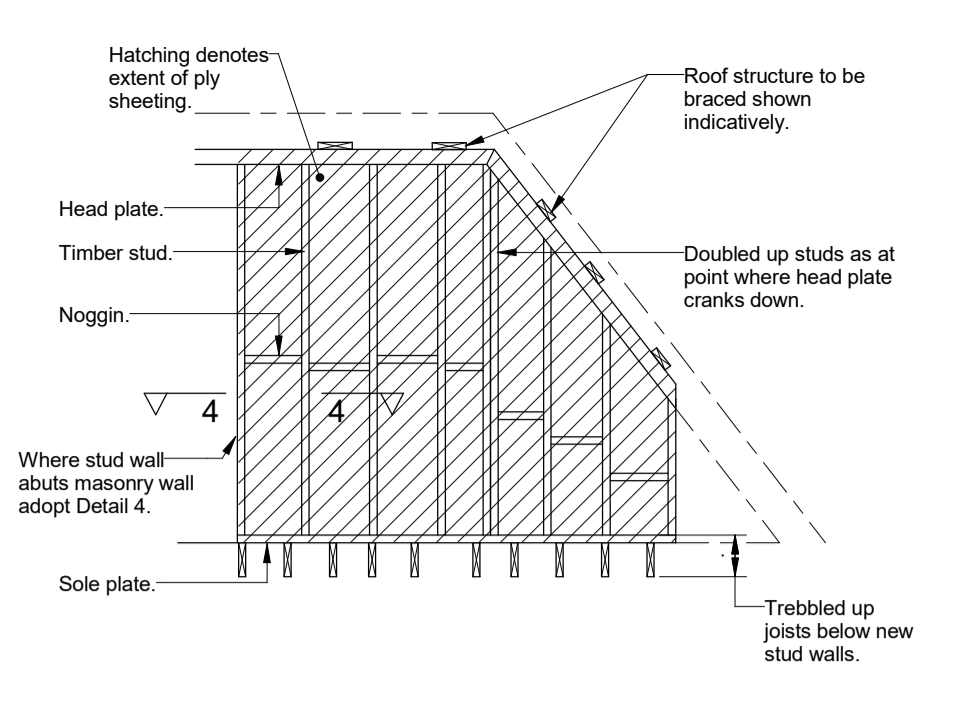


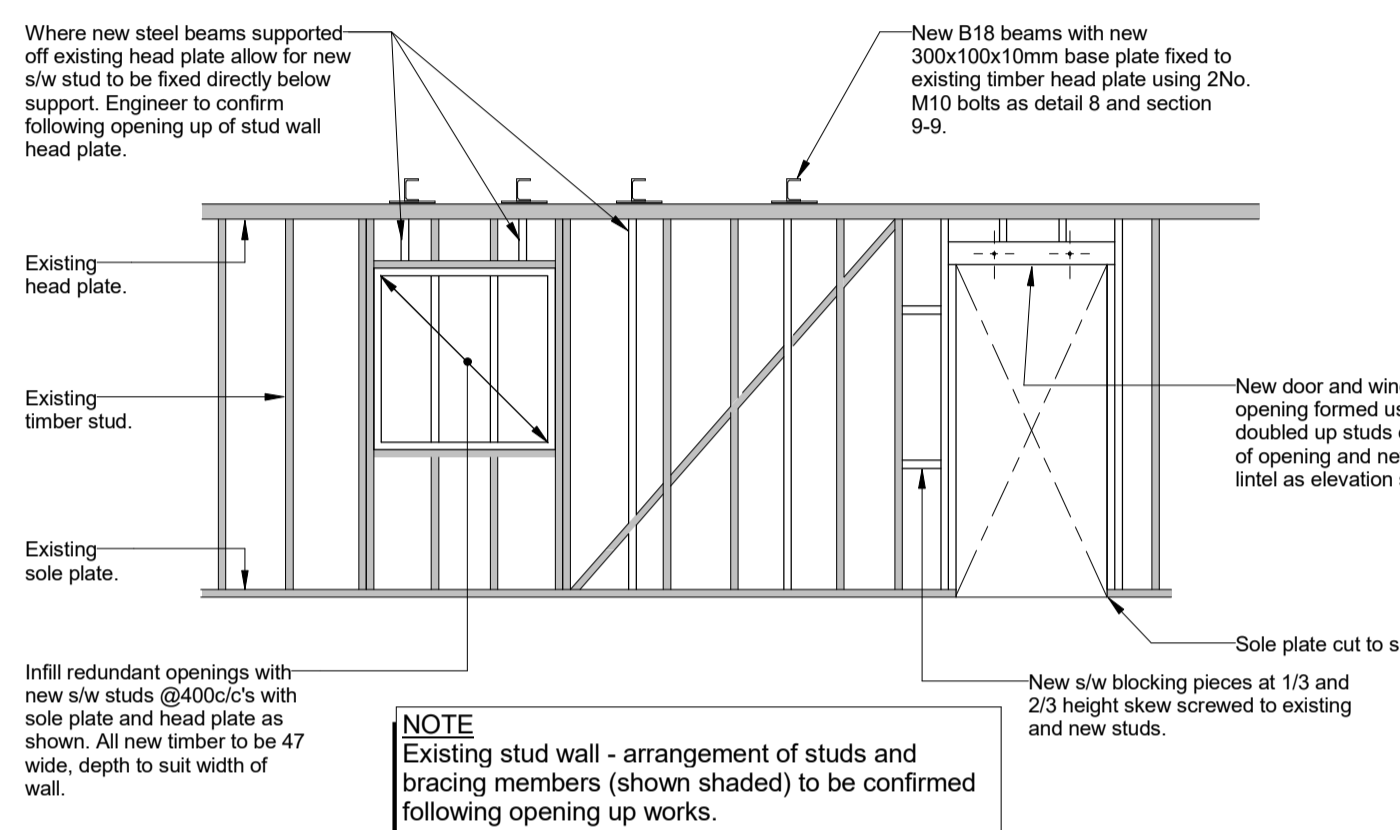
Elevation of Scenario 1: Plan Stud Wall Supporting Joists/Beams
scale 1 : 50



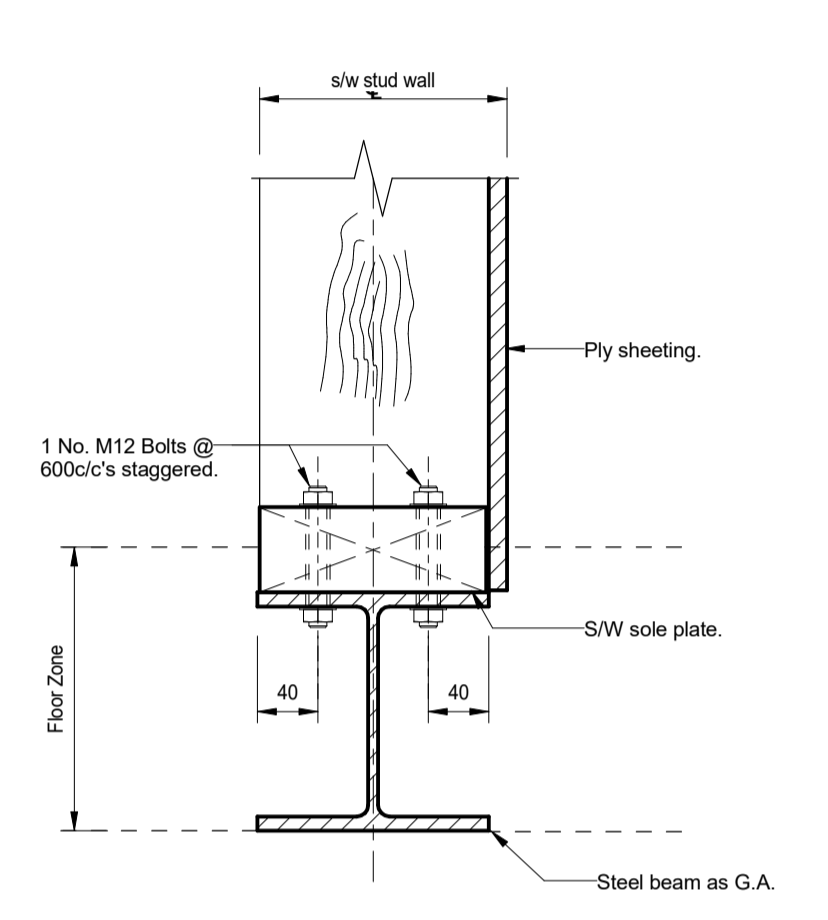
Elevation of Scenario 2: Plan 150mm Wide Stud Wall with Openings
scale 1 : 50



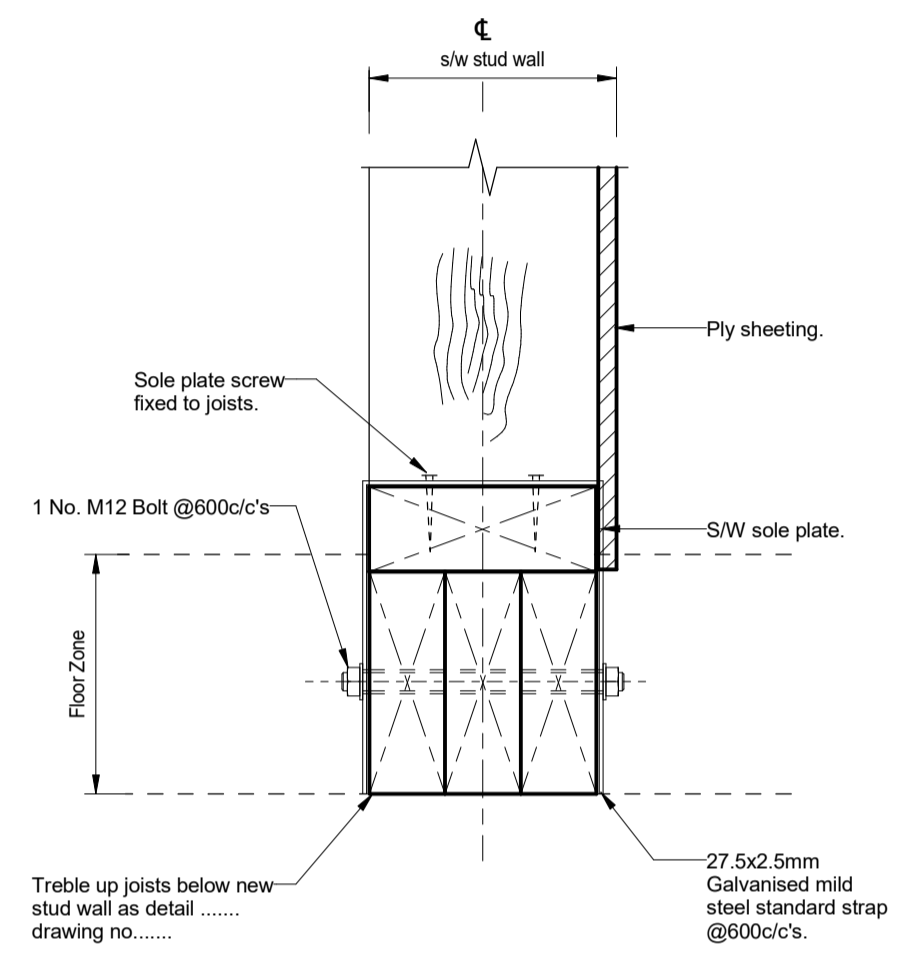
Elevation of Scenario 3: Plan Bracing Stud Wall Below Roof Structure
scale 1 : 50



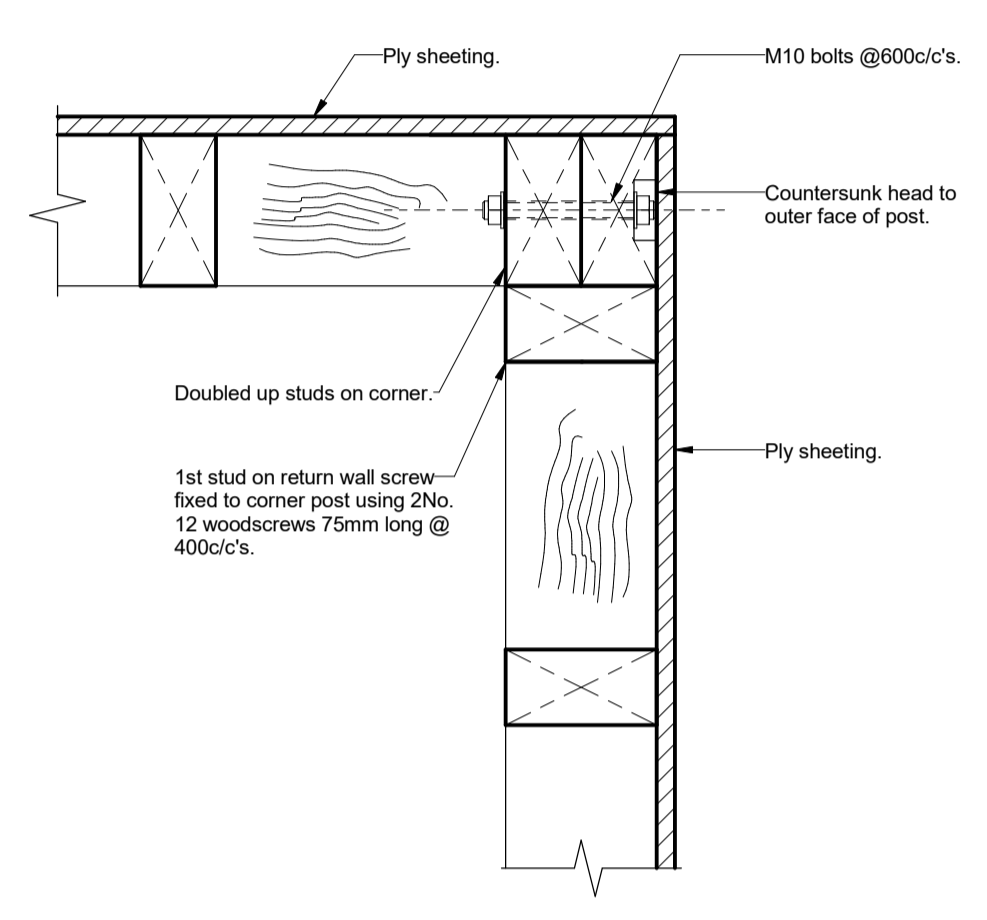
Elevation of Scenario 4: Alterations to Existing Load Bearing Stud Wall
scale 1 : 50



Detail 1: Sole Plate to Steel Beam Support
scale 1 : 5



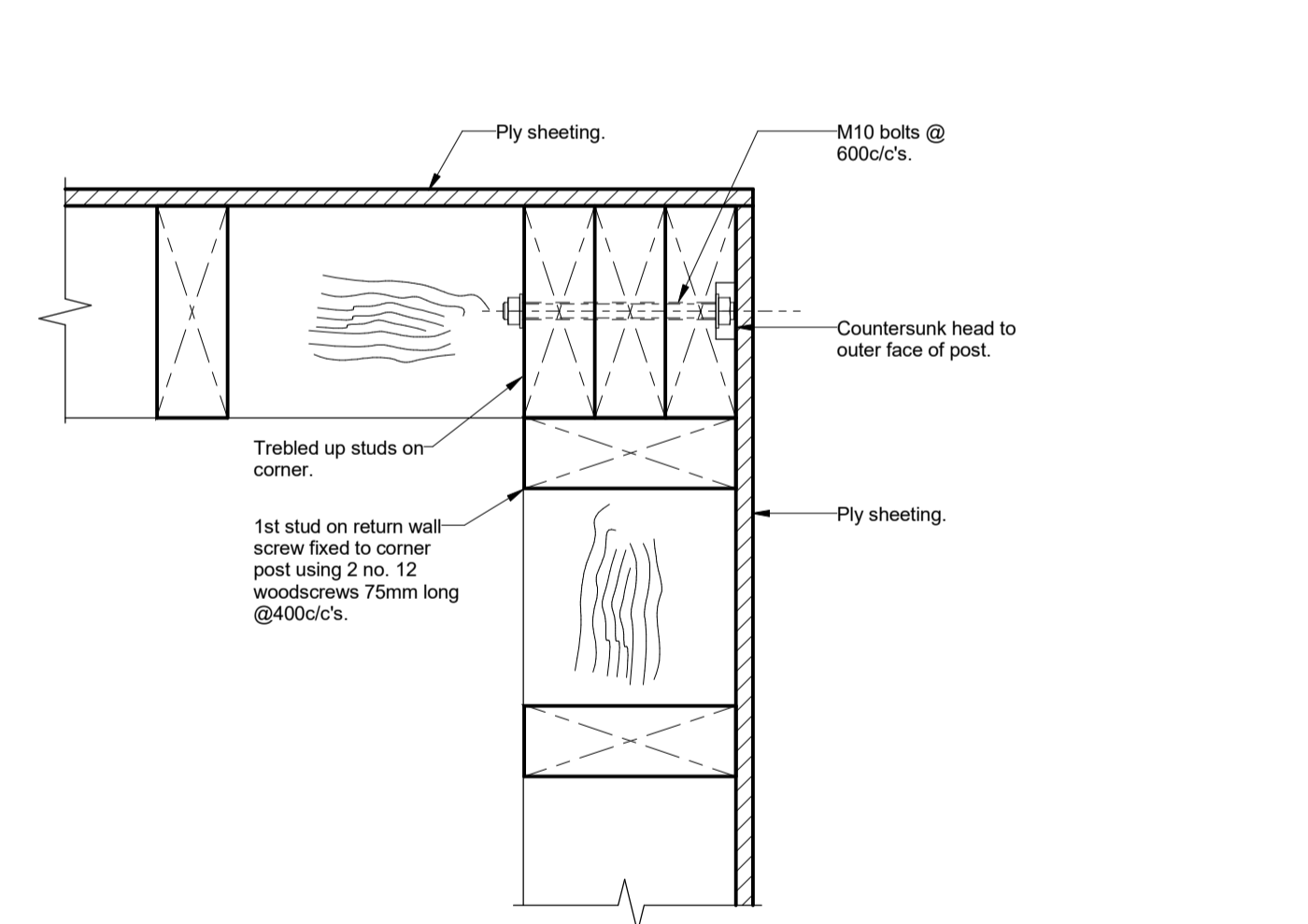
Detail 2: Sole Plate to Joist Support
scale 1 : 5



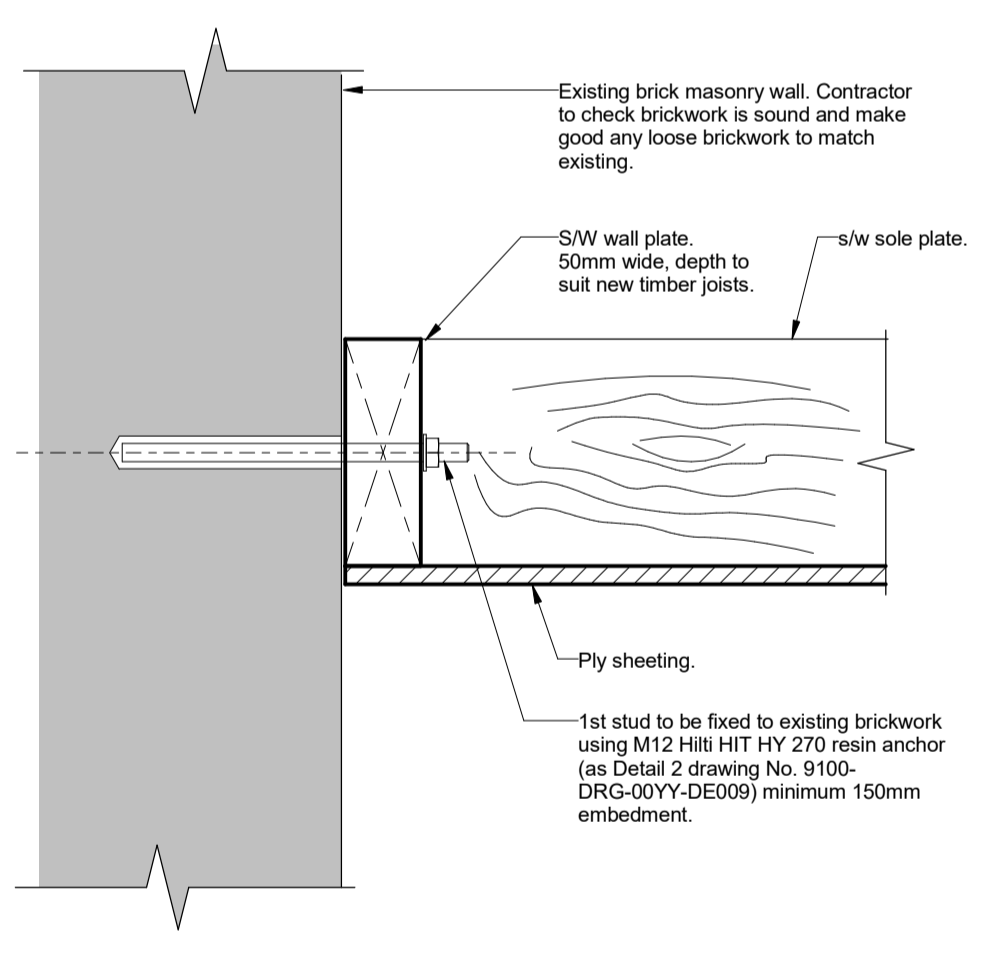
Detail 3: For 100 Wide Stud Wall
scale 1 : 5

NOTE
New 150mm wide load bearing timber stud walls to be formed using 47mm wide by 150mm s/w studs at max 400mm c/c with 72x150mm head plate and sole plate screw-fixed together, with 47x150mm s/w blocking pieces at mid height of studs. 18mm marine ply sheeting to be screw fixed to one face using No.12 woodscrews, 50mm long at 400mm c/c to all elements.

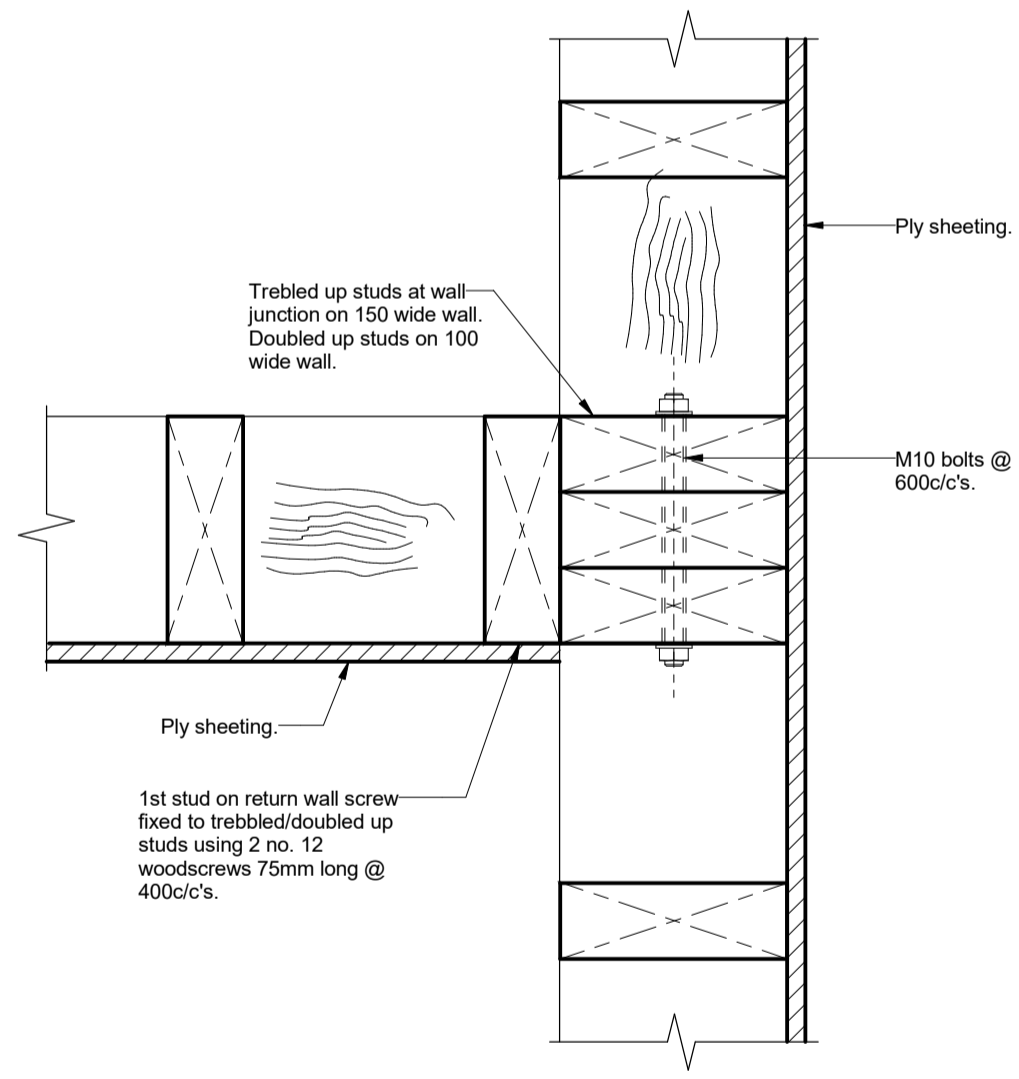
NOTE
New 100mm wide load bearing timber stud walls to be formed using 47mm wide by 100mm s/w studs at max 400mm c/c with 47x100mm head plate and sole plate screw-fixed together, with 47x100mm s/w blocking pieces at mid height of studs. 18mm marine ply sheeting to be screw fixed to one face using No.12 woodscrews, 50mm long at 400mm c/c to all elements.



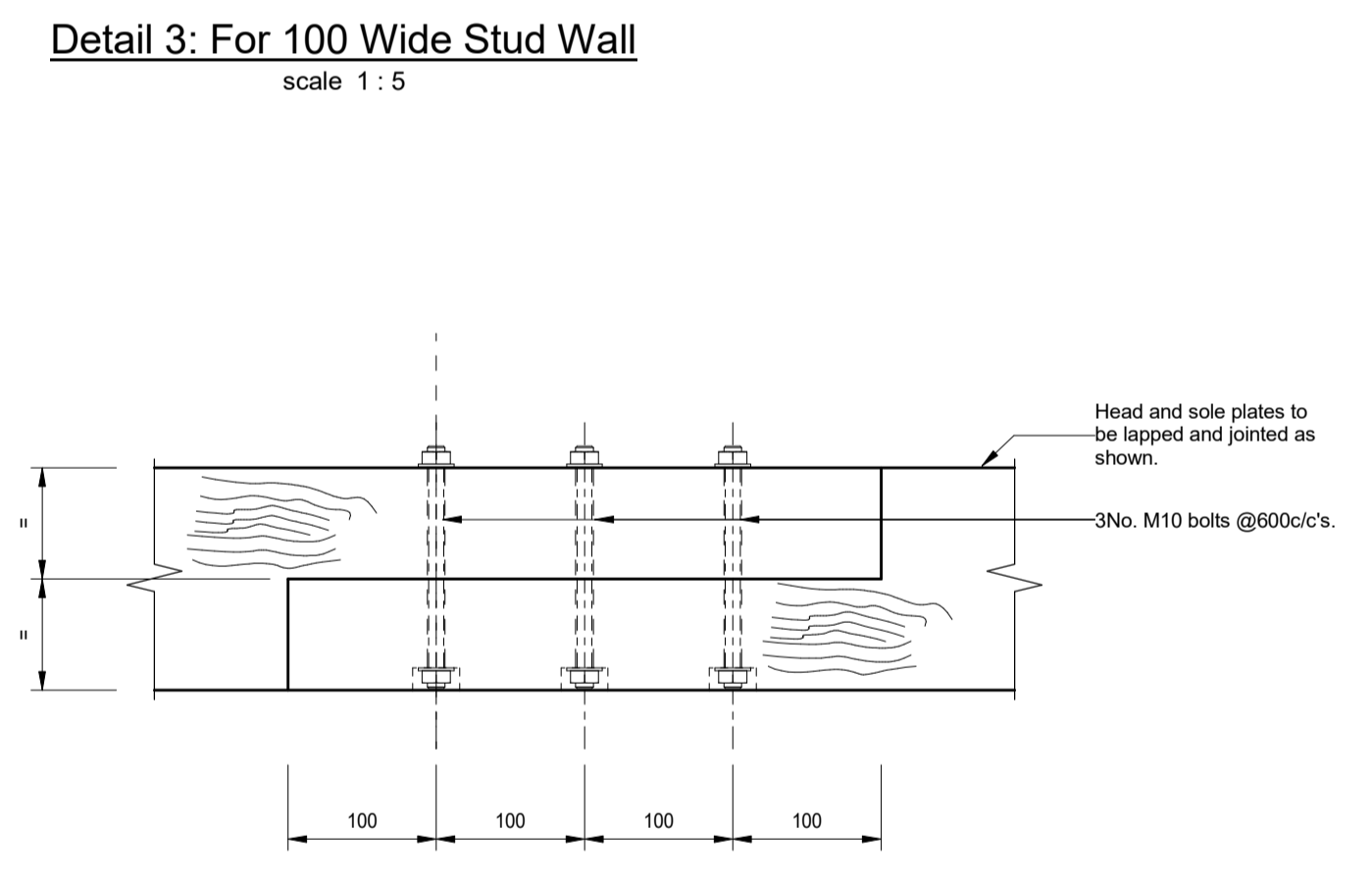
Detail 3: For 150 Wide Stud Wall
scale 1 : 5



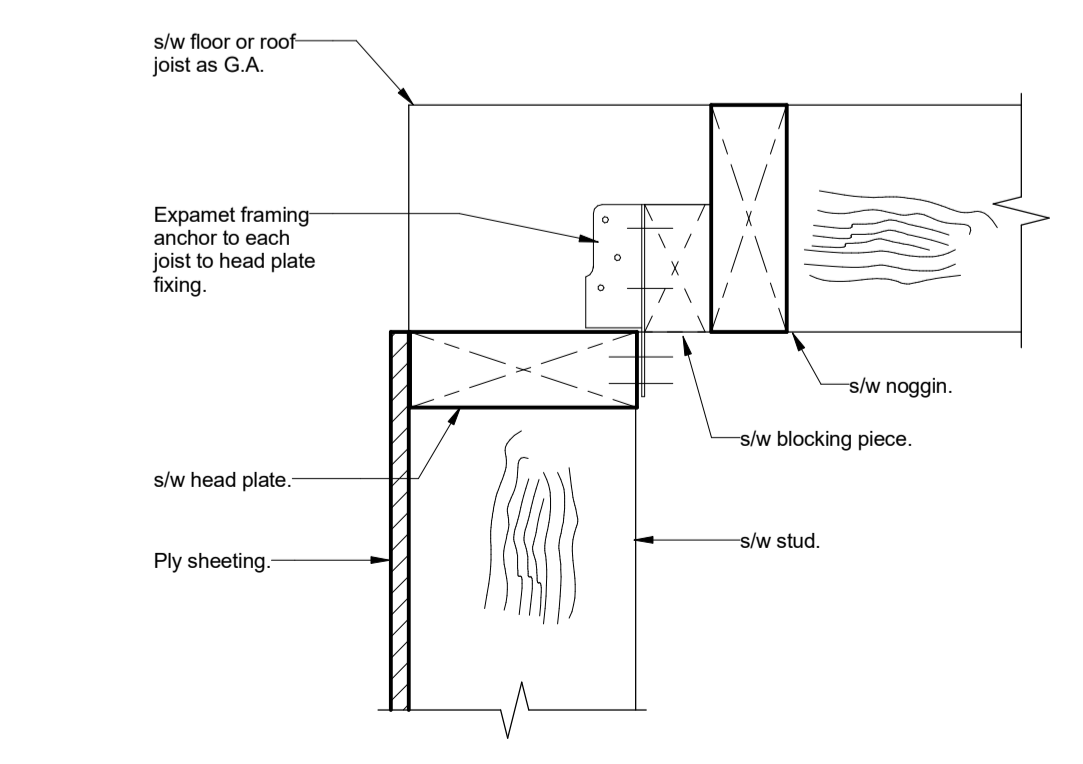
Detail 4: New Stud Wall to Existing Brick Wall Junction
scale 1 : 5



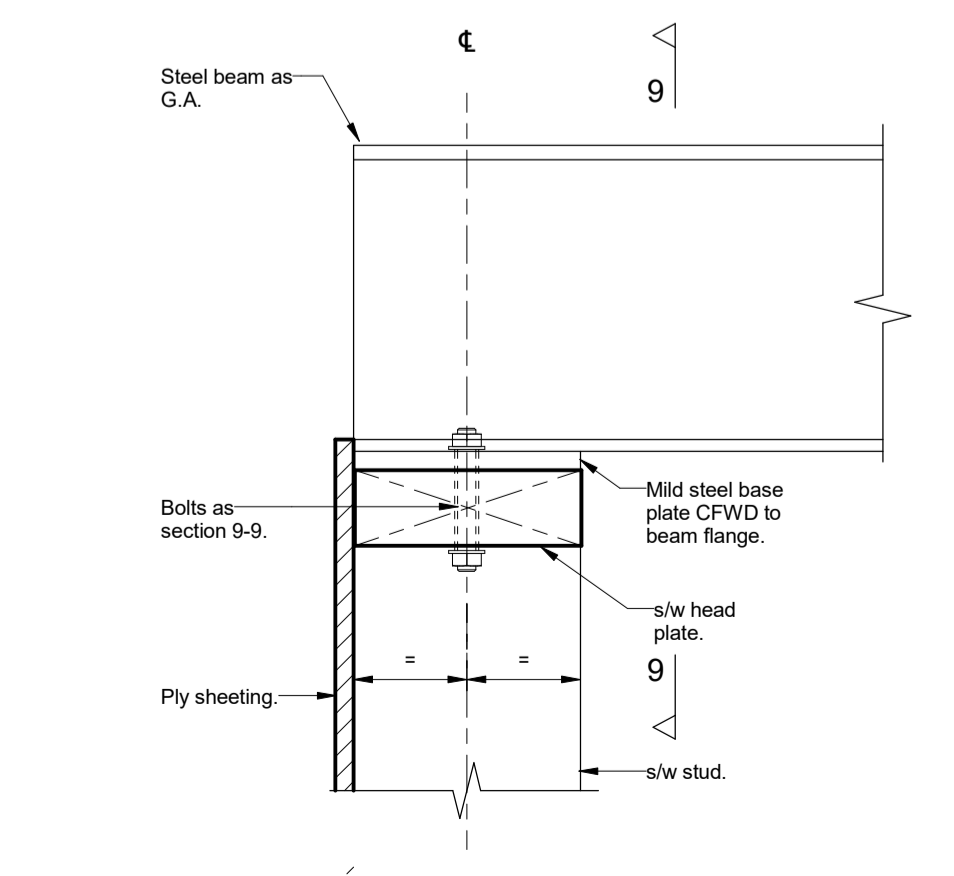
Detail 5: New Stud Wall to Stud Wall Junction
scale 1 : 5



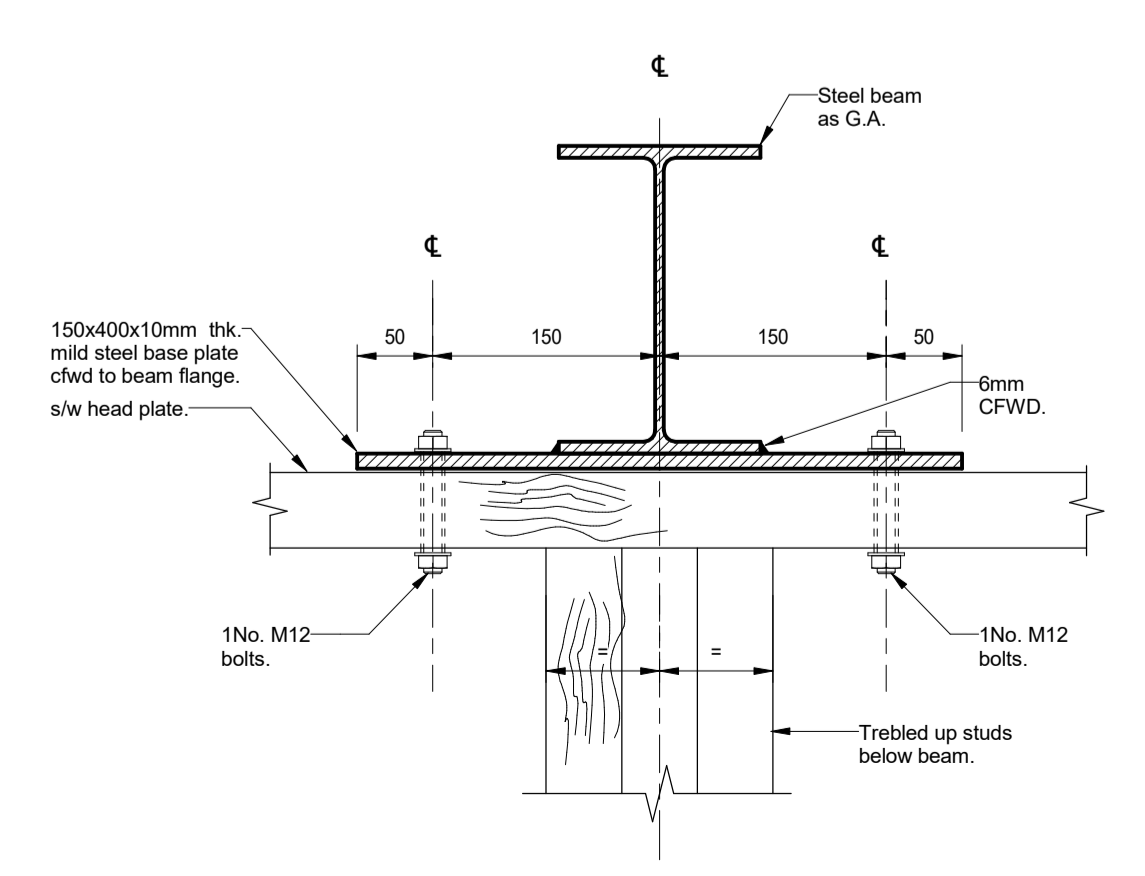
Detail 6: Lapped Joint to Sole/Head Plate
scale 1 : 5



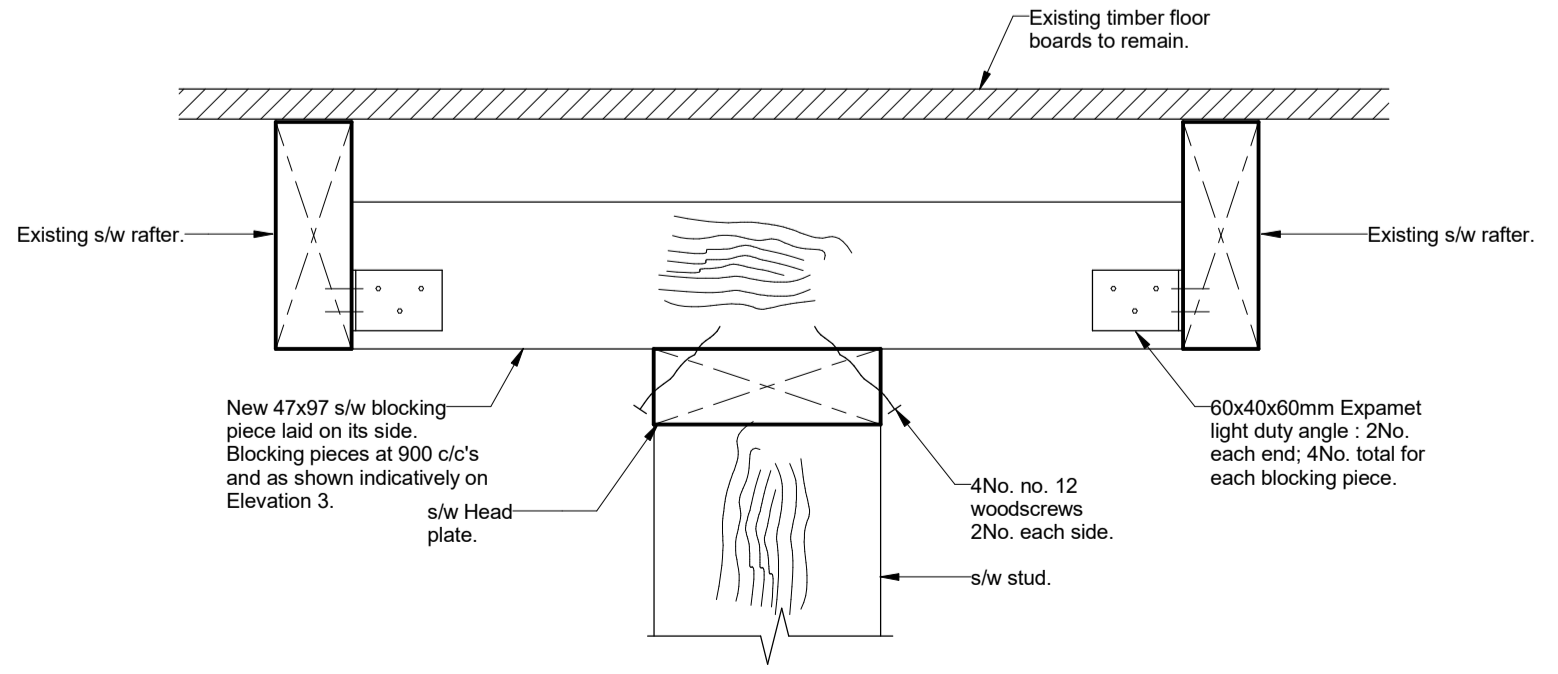
Detail 7: Joist support detail
scale 1 : 5



Detail 8: Steel Beam Support Detail On New Timber Stud.
scale 1 : 5



Section 9-9
scale 1 : 5



Detail 10: New Stud Wall to Existing Roof Junction
scale 1 : 5

General Notes
1. Drawings shall be referred to for structural work only unless otherwise stated and read in conjunction with Architects, Service Engineer's and Sub-Contractor's drawings.
2. The Contractor shall check all levels and dimensions, any errors or omissions are to be reported at once to the Engineer.
3. For General Notes refer to no. 9100-DRG-99YY-GN002.

27.07.16	First Issue	DA	TP
REV	DATE	DESCRIPTION	BY

FOR TENDER



TITLE:
Generic Details for New and Existing Structural Timber Stud Walls

PROJECT:
**Project No:11581
Kidderpore Avenue**

SCALE: A1@ As Shown DATE: July16 DRAWN: DA CHKD: TP

DRG NO. 9100-DRG-00YY-DE010

Tully De'Ath consultants
Engineering at its Best

T: 01342 828 000
E: info@tullydeath.com
W: www.tullydeath.com