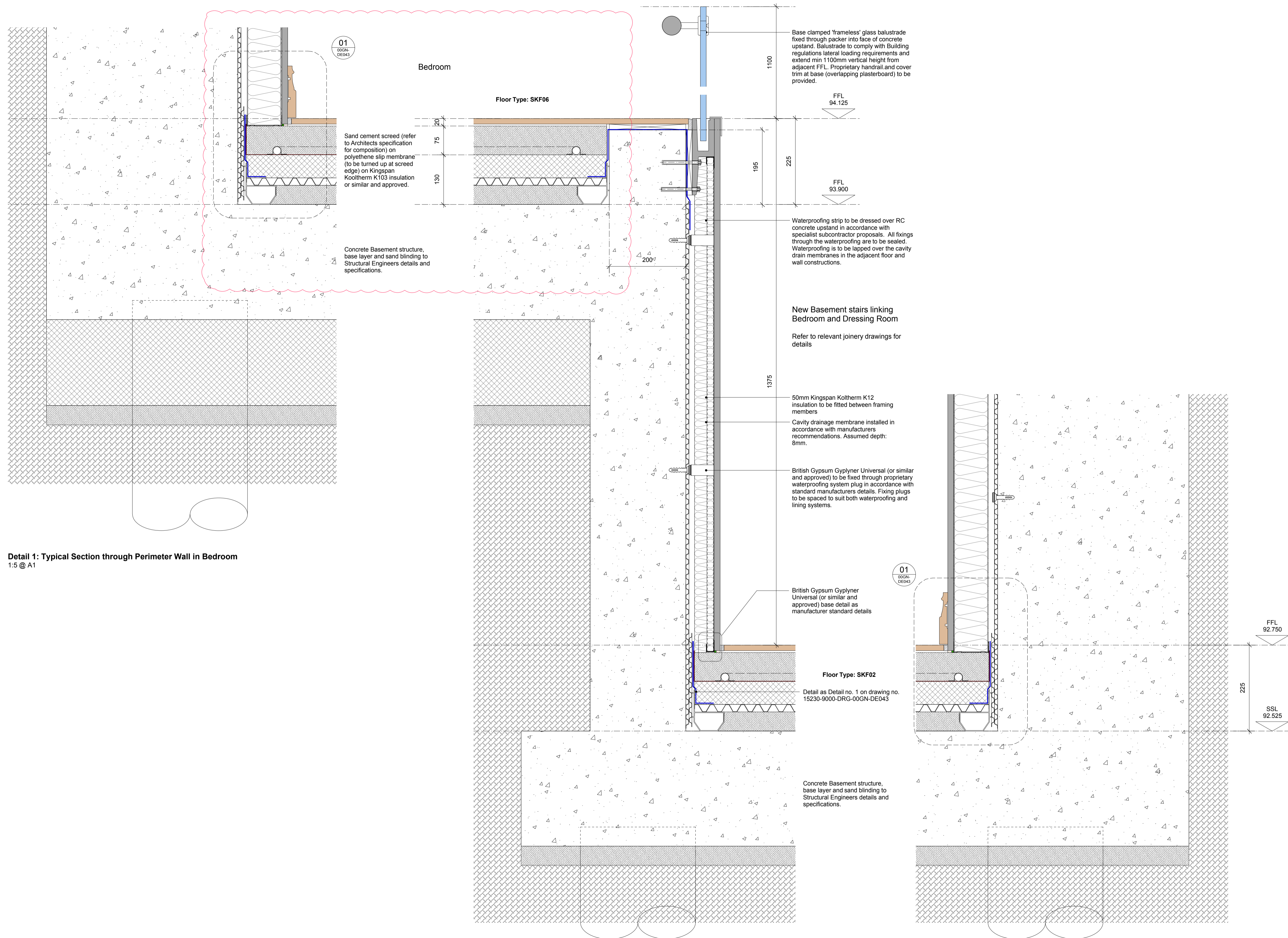


**Notes:**

ALL DETAILS AND SPECIFICATIONS RELATING TO WATERPROOFING AND ASSOCIATED COMPONENTS ARE TO BE DESIGNED BY THE SPECIALIST SUBCONTRACTOR PRIOR TO ORDER AND INSTALLATION.

1. ALL existing constructions, structure, build ups etc are to be confirmed on site PRIOR to proceeding with the work.
2. This drawing is to be read in conjunction with all relevant Architect GA drawings and specifications.
3. This drawing is to be read in conjunction with all relevant drawings and specifications produced by the structural engineer and M&E consultant.
4. This drawing is to be read in conjunction with the relevant fabric survey produced by ESG.
5. This drawing is to be read in conjunction with the relevant condition investigation report produced by Hutton & Rostron.



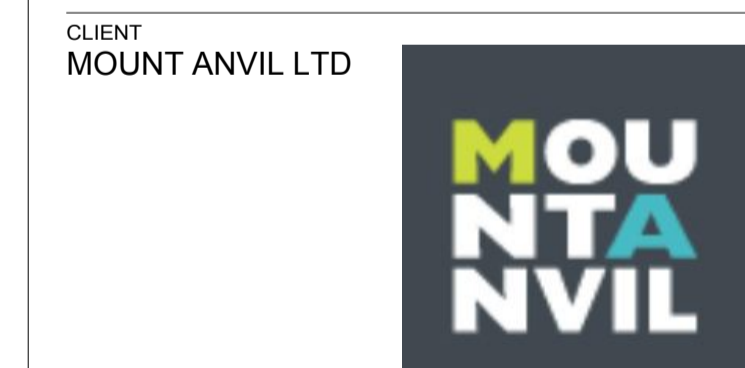
**Detail 1: Typical Section through Perimeter Wall in Bedroom**  
1:5 @ A1

**Detail 2: Typical Section through Level Change Adjacent to Bedroom Stairs**  
1:5 @ A1

**Detail 3: Typical Section through Perimeter Wall At Lower Basement Level**  
1:5 @ A1

**CONSTRUCTION**

REVISION	DRN	CHKD	DATE
T1 First Issue	ST	TW	18.11.16
C1 Construction Issue. Upper level amended from voltex to drained cavity construction at client request.	ST	TW	12.12.16



PROJECT  
KIDDERPORE AVENUE

DRAWING  
Skeel Library  
Basement Floor Details - Sheet 1

SCALE	DATE
1:5 @ A1	Nov 2016
DRAWING No.	DRAWN BY
15 230	ST
9000-DRG-00SK-DE003	REVISION
	C1