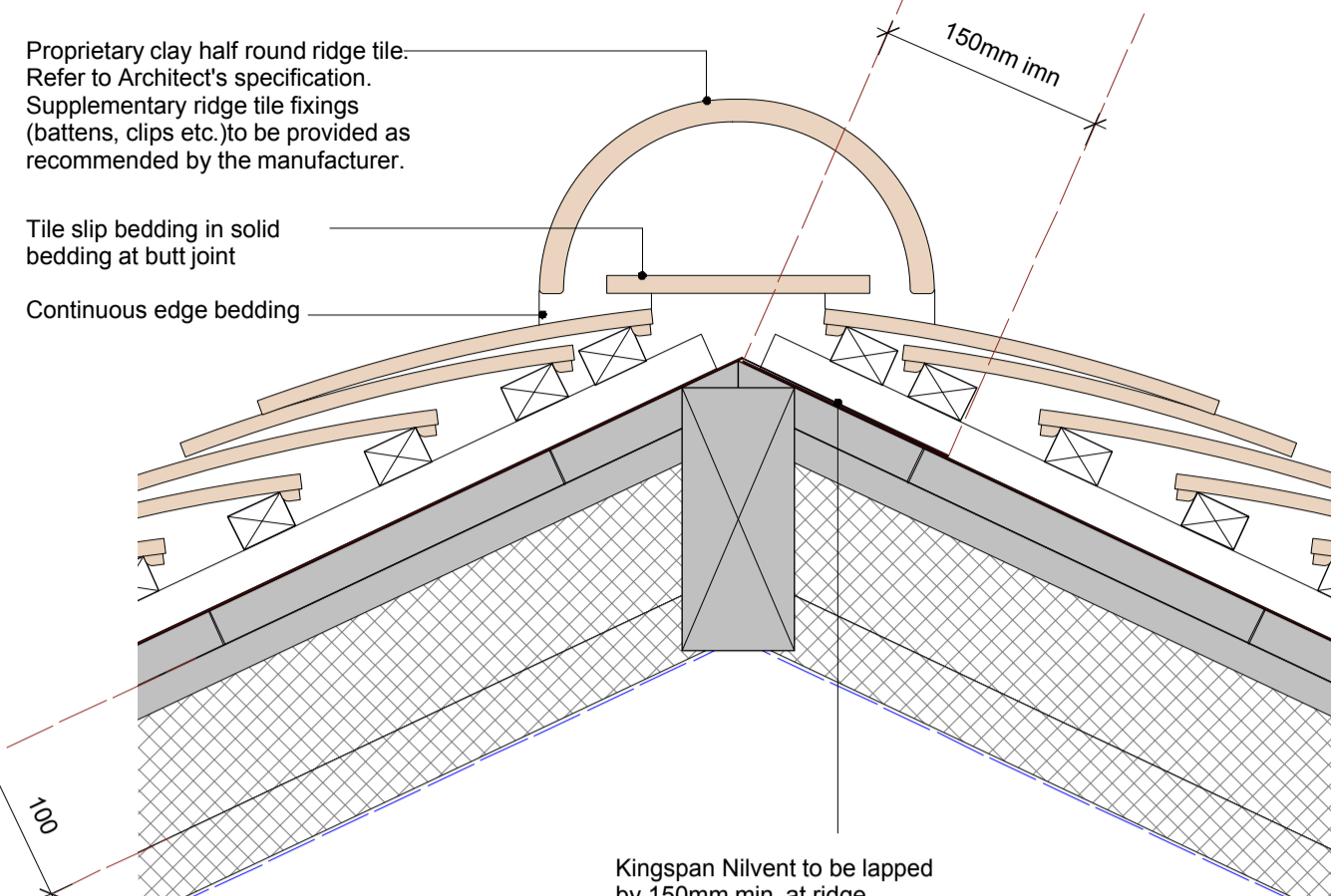


Notes:
SKEEL LIBRARY IS A LISTED BUILDING. NO UNAUTHORISED WORK IS TO BE CARRIED OUT.

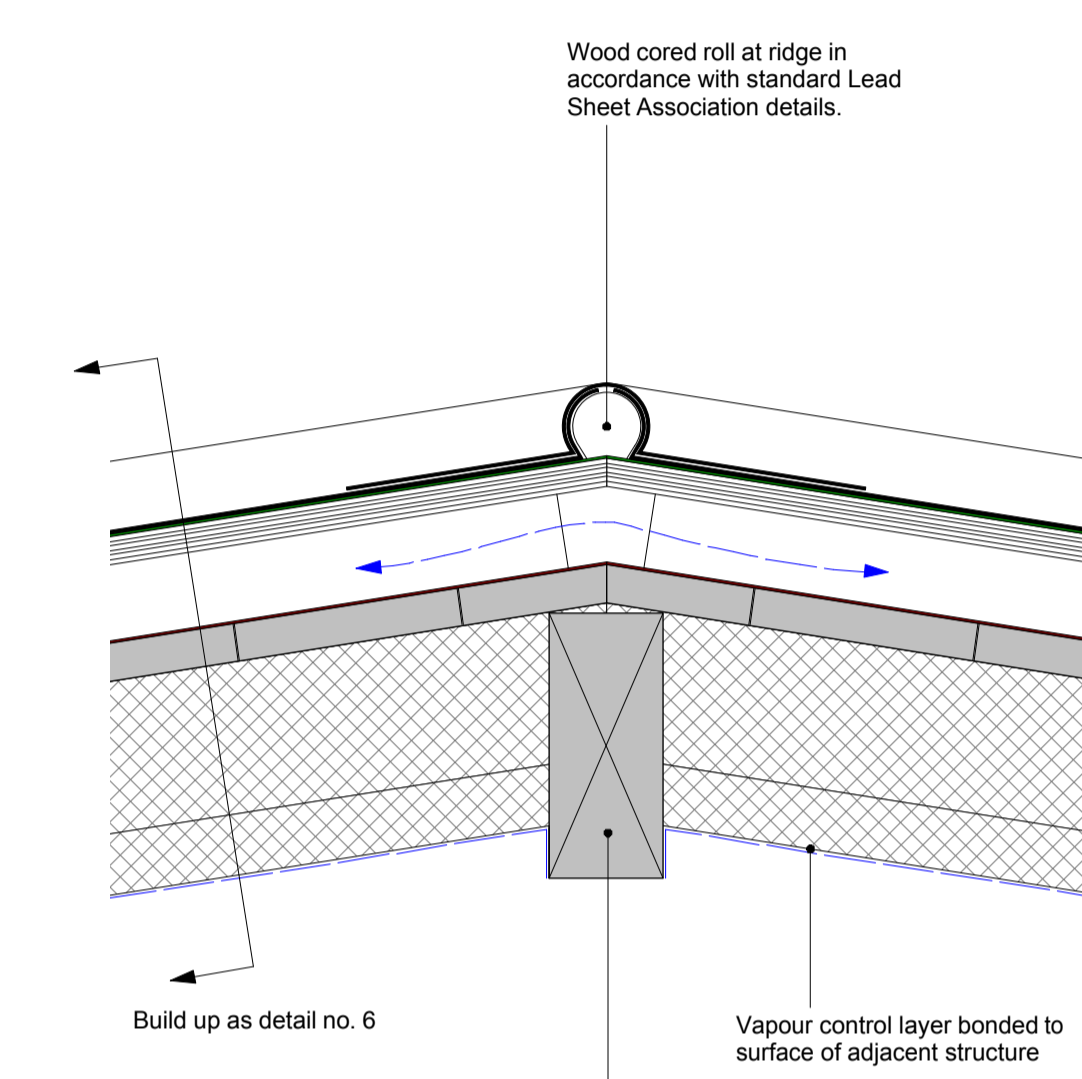
The contractor is to take all measures possible to protect the listed building.

1. ALL existing constructions, structure, build ups etc are to be confirmed on site PRIOR to proceeding with the work.
2. This drawing is to be read in conjunction with all relevant Architect GA drawings and specifications.
3. This drawing is to be read in conjunction with all relevant drawings and specifications produced by the structural engineer and M&E consultant.
4. This drawing is to be read in conjunction with the relevant fabric survey produced by ESG.
5. This drawing is to be read in conjunction with the relevant condition investigation report produced by Hutton & Rostron.
6. All lead details to be installed in accordance with Lead Sheet Association recommendations and guidance.

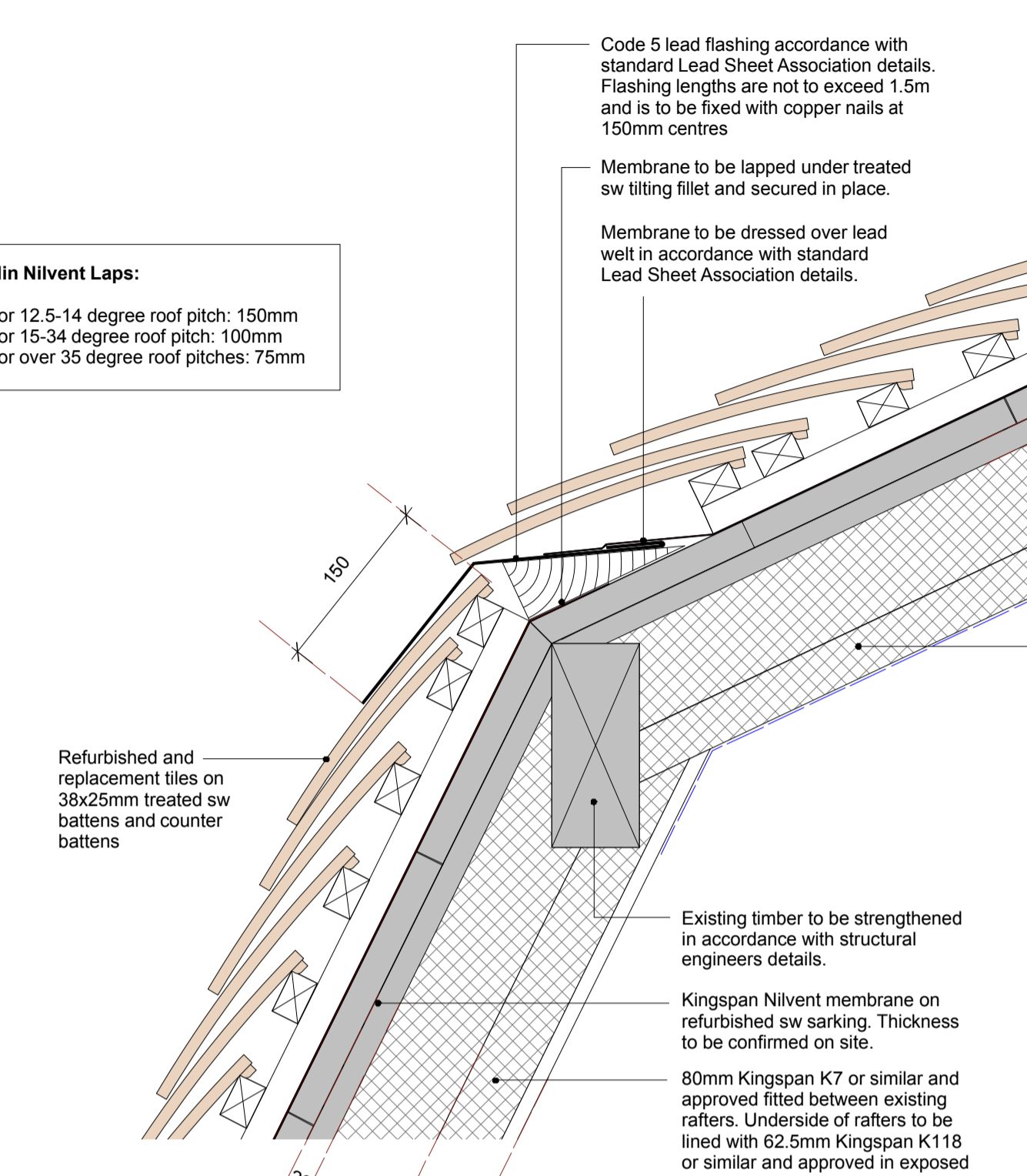
Min Nilvent Laps:
For 12.5-14 degree roof pitch: 150mm
For 15-34 degree roof pitch: 100mm
For over 35 degree roof pitches: 75mm



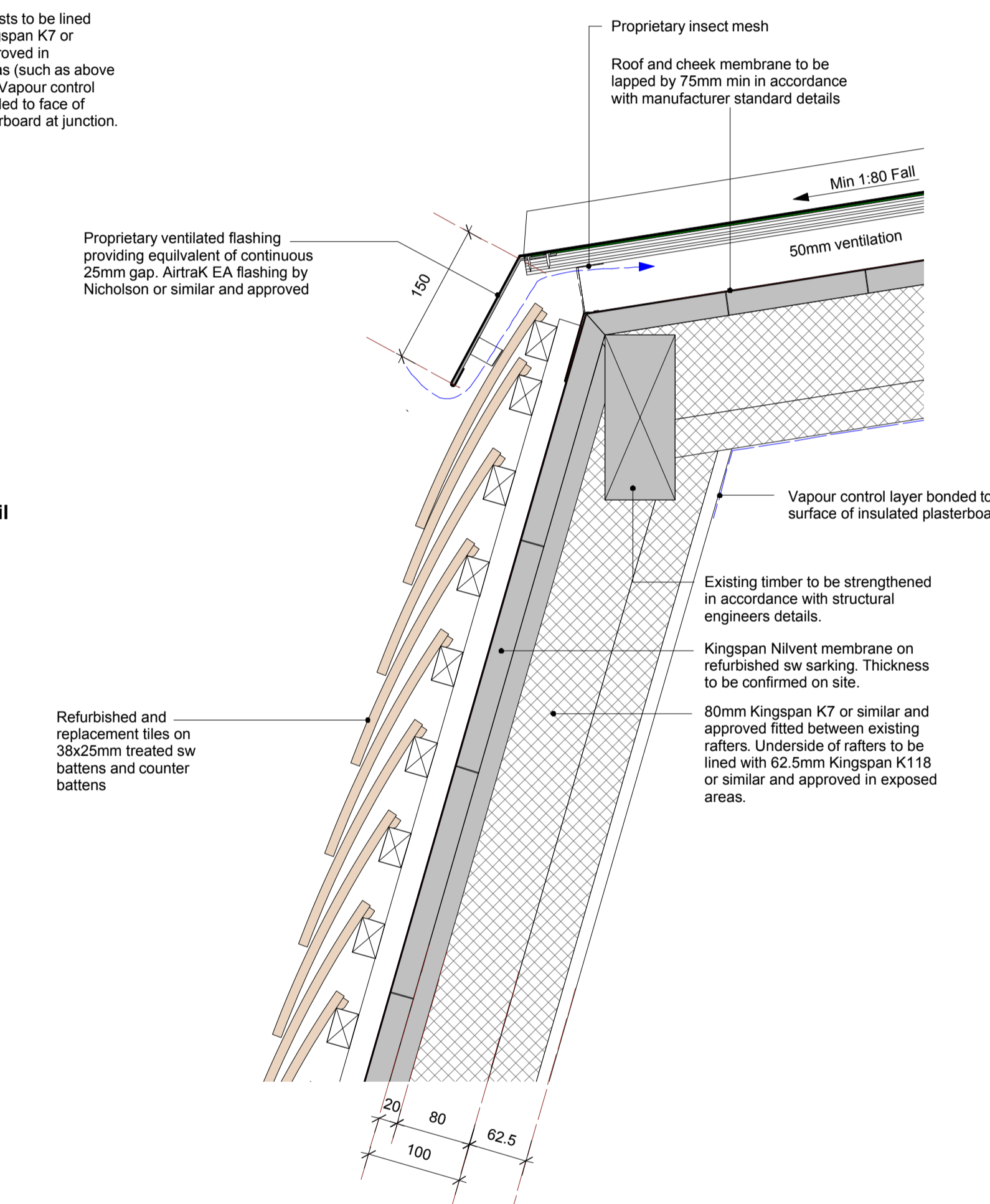
Detail 3: Typical Unventilated Clay Tile Ridge Detail
1:5 @ A1



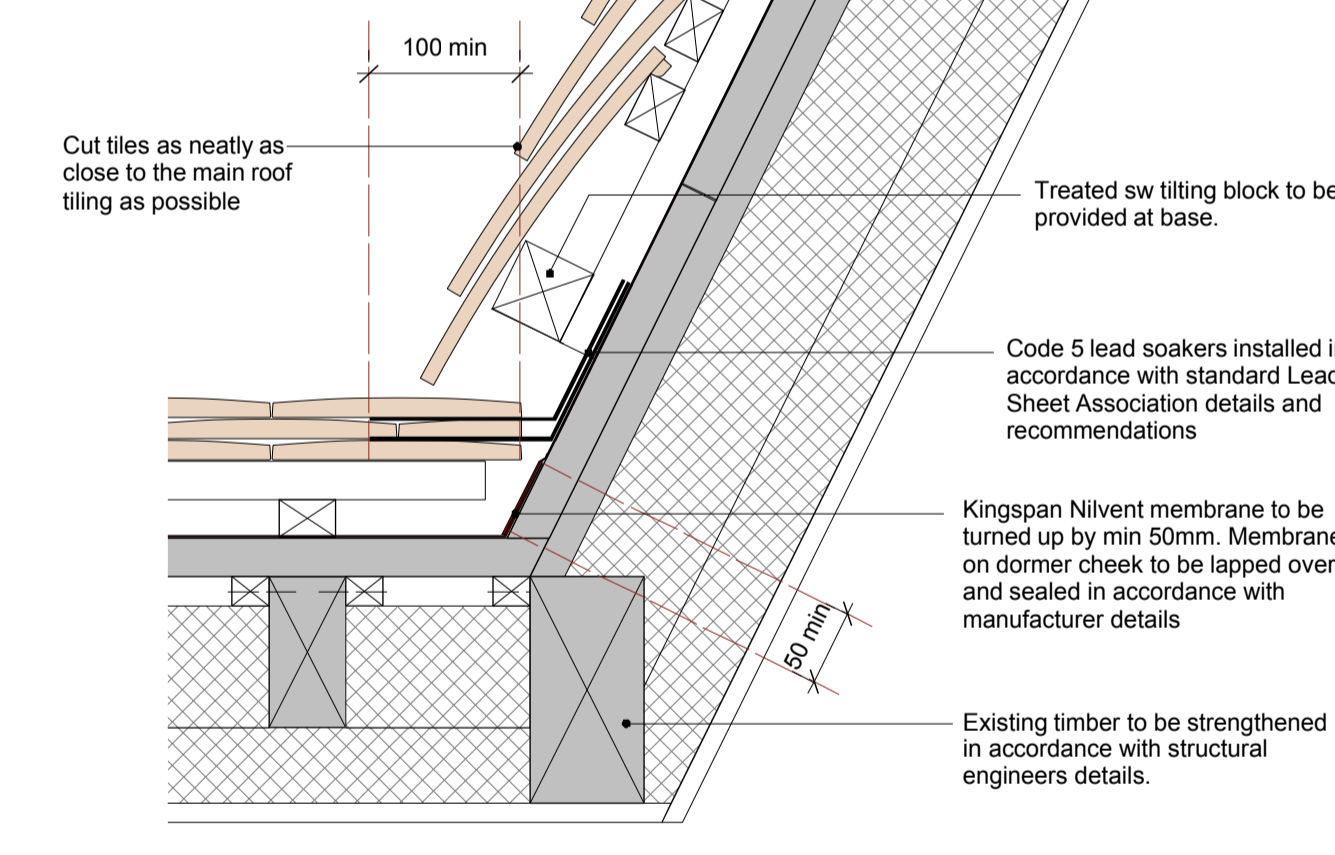
Detail 5: Typical Lead Clad Ridge Detail
1:5 @ A1



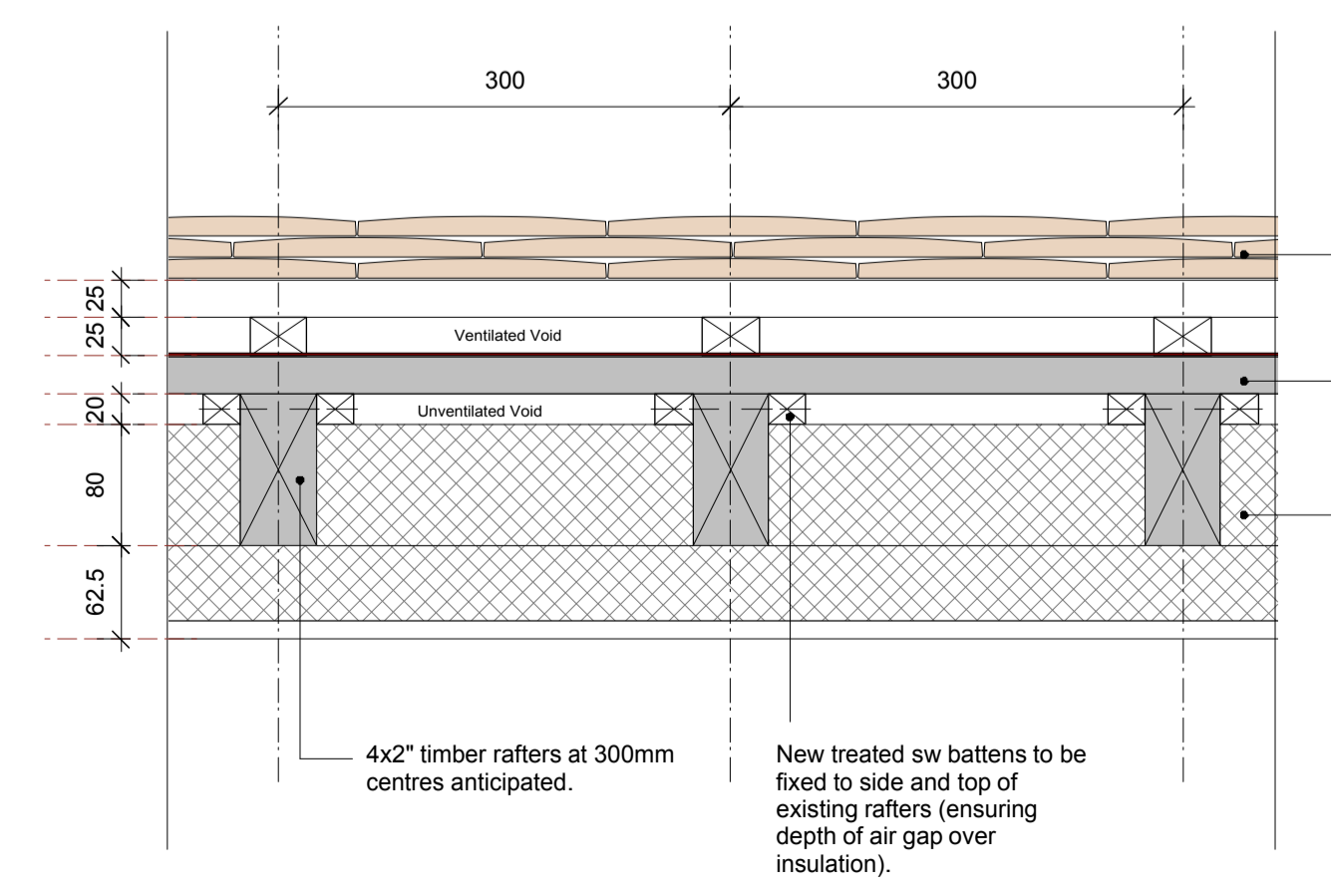
Detail 2: Typical Unventilated Clay Tile Junction Detail
1:5 @ A1



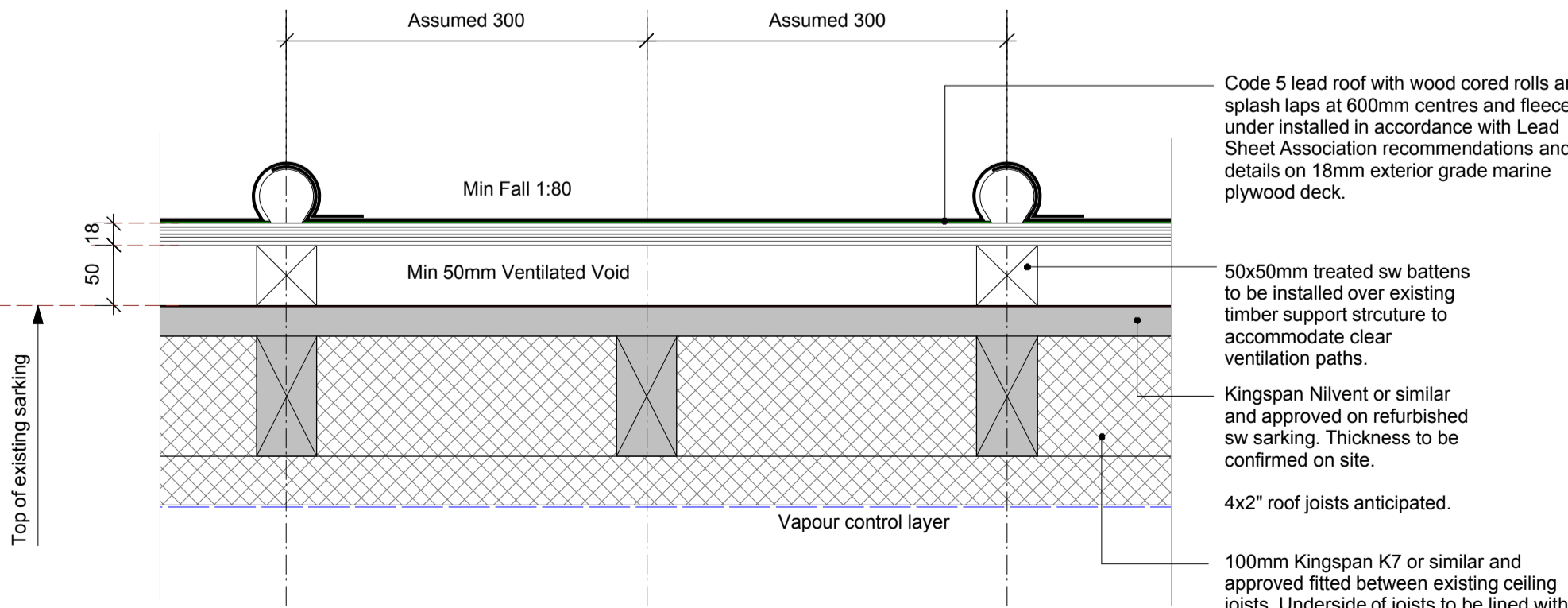
Detail 4: Typical Unventilated Clay Tile/Lead Clad Junction Detail
1:5 @ A1



Detail 1: Typical Unventilated Clay Tile Junction Detail
1:5 @ A1



Typical Pitched Roof Build Up (1:5 @ A1)



Detail 6: Typical Lead Clad Refurbishment Detail
1:5 @ A1

CONSTRUCTION

REVISION	DRN	CHKD	DATE
T1 First Issue	ST	TW	04.11.16
C1 Issued for Construction	ST	TW	15.12.16



CLIENT
MOUNT ANVIL LTD

PROJECT
KIDDERPORE AVENUE

DRAWING
Skeel Library
Typical Roof Details

SCALE	1:5 @ A1	DATE	Nov 2016
DRAWING No.	15 230	DRAWN BY	ST
	9000-DRG-00SK-DE002	REVISION	C1

A & Q PARTNERSHIP (LONDON) LTD
THE LUX BUILDING, 2-4 HOXTON SQUARE, LONDON N1 6NU
Tel: 020 7613 2244 Fax: 020 7613 2642 Email: london@aqp.co.uk
ARCHITECTURE DESIGN MASTERPLANNING INTERIORS