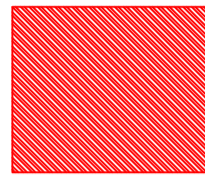
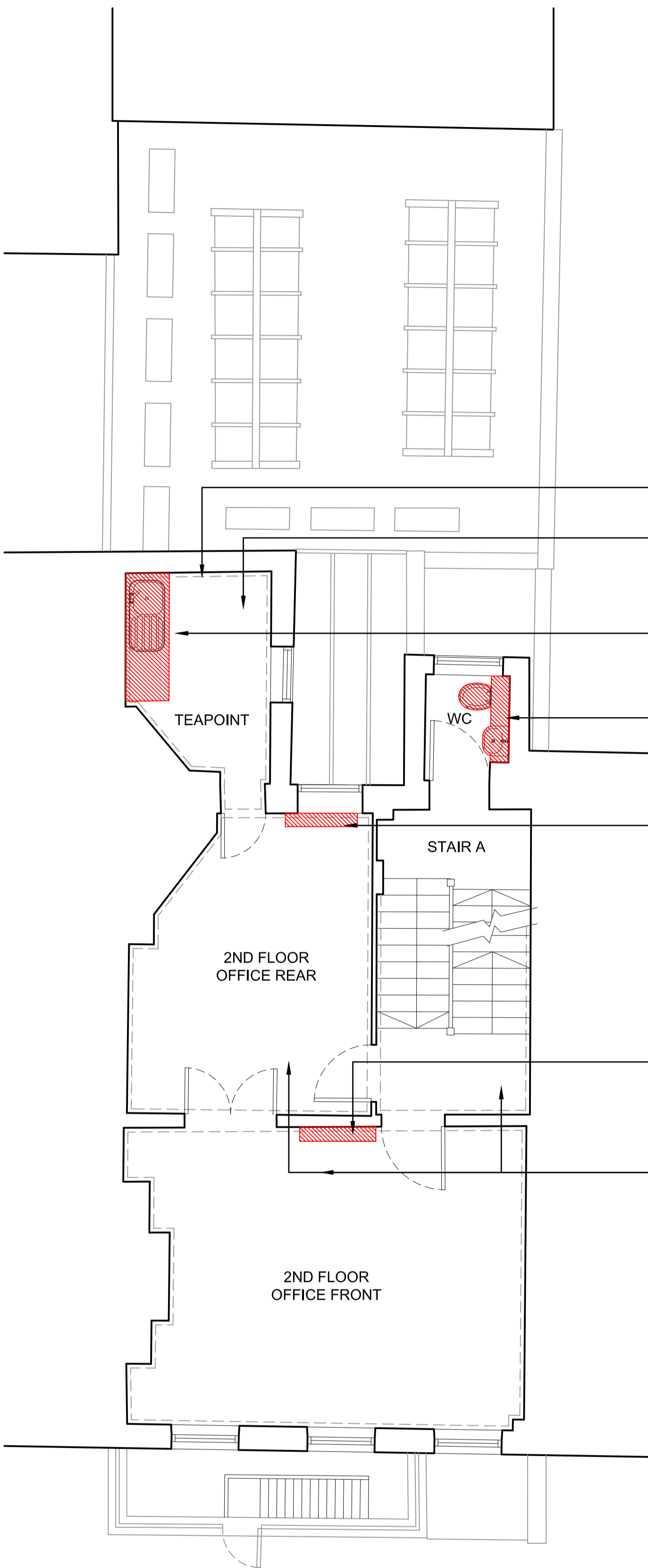


version	date	author	version notes
P1	As dwg	As dwg	Initial issue

LEGEND



DENOTES AREAS TO BE STRIPPED OUT



Remove existing damaged timber wall panels (in readiness for replacement with new to match)

Remove existing vinyl floor

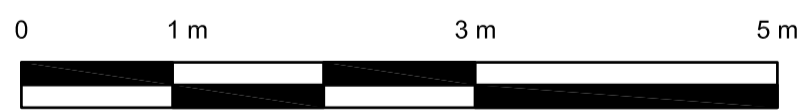
Remove teapoint units and cap off existing services

Strip out existing fixtures, fittings and tiling

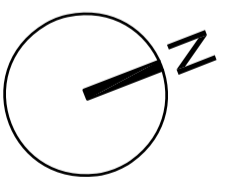
Strip out existing heating unit

Strip out existing heating unit

Remove existing carpets throughout



SCALE: 1:50



status **Preliminary**



project 35 Great James Street, WC1N

title Second Floor Demolition Plan

scale 1:50@A2 date 08..12.16 author LH job no. 1532-F0-502 ver. P1