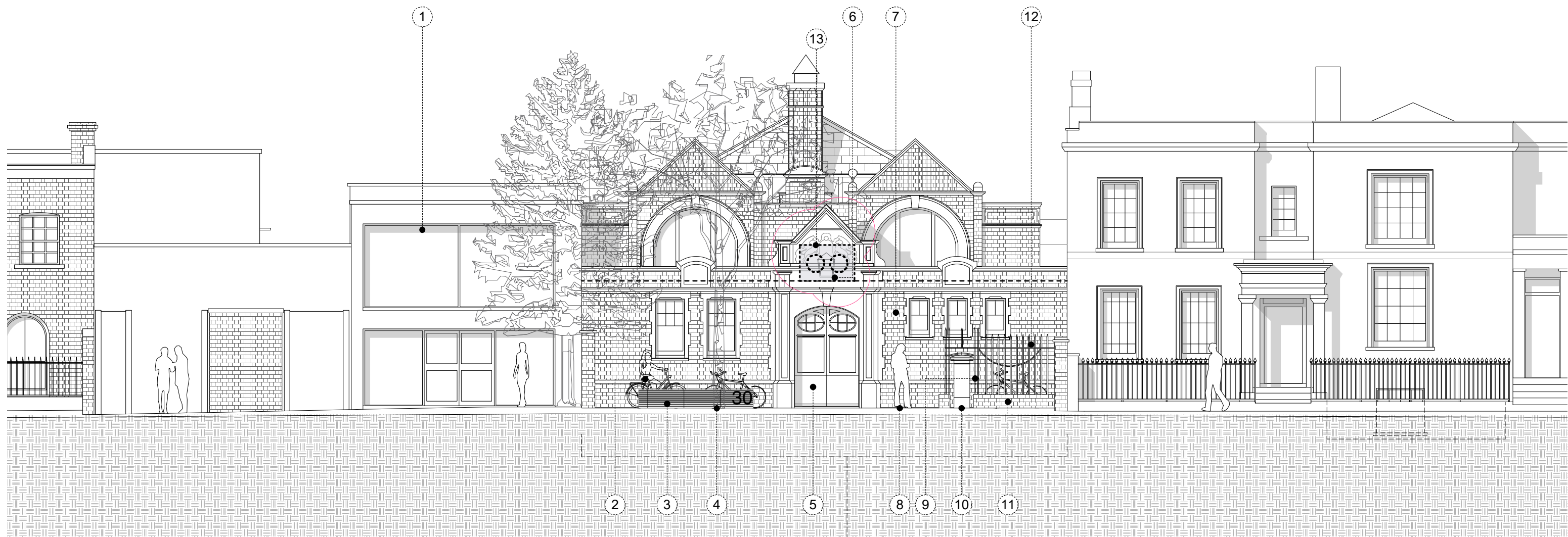
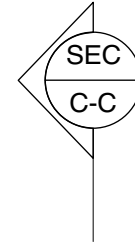
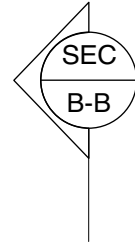
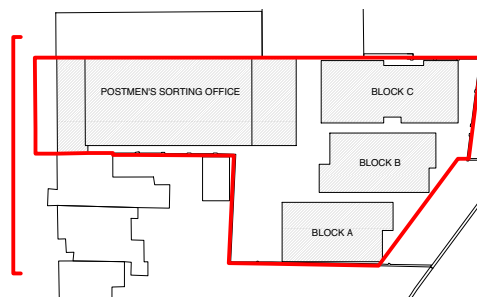


1. Medical Centre
2. New Sheffield type bike stands for office spaces: metal to match perforated metal panels.
3. Perforated metal panel enclosure for meters, with bench and backlit building No.
4. Existing mature tree in pavement.
5. Existing doors refurbished and redecorated.
6. Hanging lamp retained and restored.
7. Postmen's Sorting Office stonework and brickwork carefully cleaned and restored where necessary.
8. New paving to entrance space.
9. Existing railings repaired and restored.
10. Existing red postbox retained in current position.
11. Rebuilt brick base wall with railings to be repaired and repainted as per original railings.
12. New Sheffield type bike stands for office spaces: metal to match perforated metal panels.
13. Two external air cooled VRV condensers mounted back-to-back on flat roof behind existing raised parapet wall.



POSTMEN'S SORTING OFFICE
30 Leighton Road



DO NOT SCALE OFF THIS DRAWING ALL AMBIGUITIES OR DISCREPANCIES TO BE REPORTED TO ARCHITECT BEFORE COMMENCING		Revisions		STUDIO MACKERETH ARCHITECTS 78 ST PANCRAS WAY LONDON NW1 0PB TELEPHONE +44 (0)20 7042 8335 EMAIL: INFO@STUDIOMACKERETH.COM	Project 30 Leighton Road	
Notes		Date:	Rev:		Drawing Title Proposed Elevation 1	
		14/12/15	A	Mezzanine and stairs in Postmen's Office updated further to conservation officer's comments. Refuse store and cycle storage details amended.		Scale 1:100 @ A3
		08/01/17	B	Elevation updated to show condenser units on single storey roof.		Creation Date April 2015
				Status Plan	Project No. 015	Revision 151
						B