



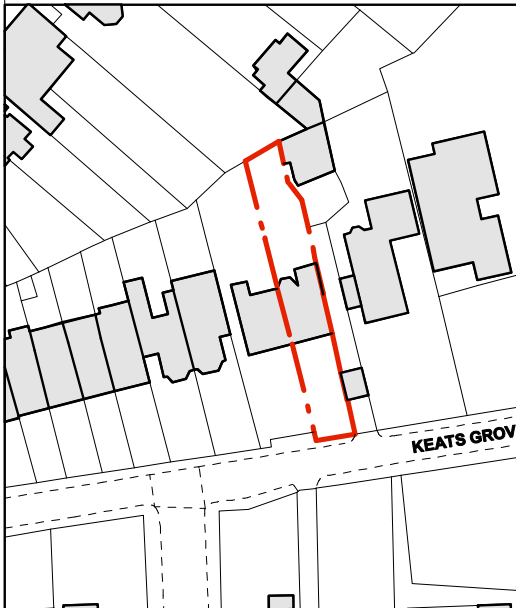
**General Notes**  
 All dimensions to be verified on site  
 To be read in conjunction with all relevant documents  
 In the event of discrepancy notify the Architect immediately  
 This document is copyright of Hugh Cullum Architects Ltd

**Issue Status**  
 SK Sketch  
 D Design  
 T Tender

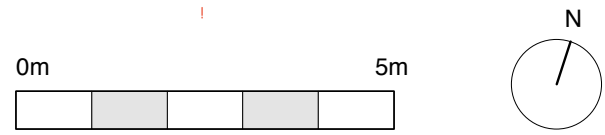
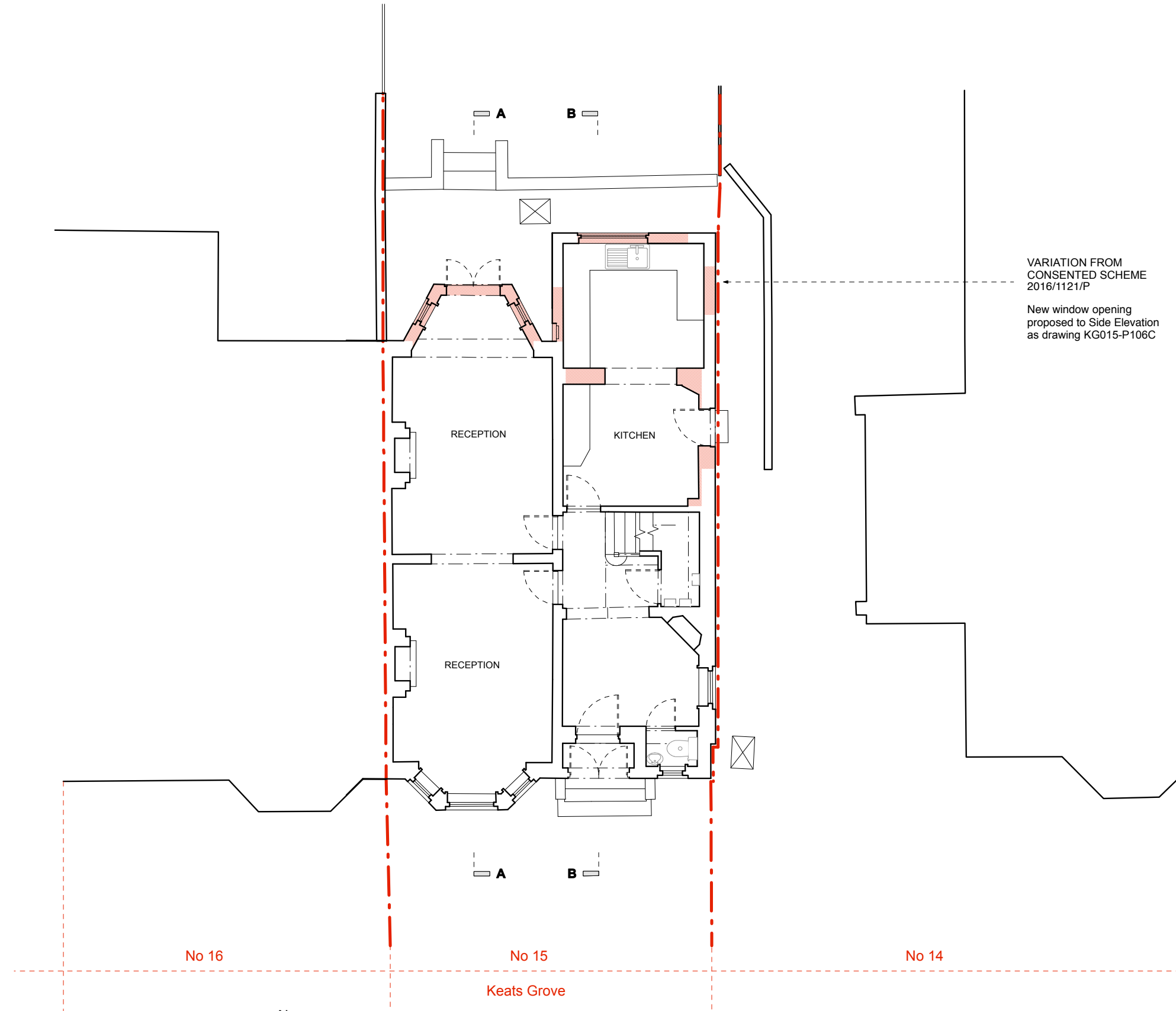
E Existing Condition  
 P Permissions  
 C Contract

 Demolition  
 Site Boundary line

VARIATION FROM  
 CONSENTED SCHEME  
 2016/1121/P  
 New window opening  
 proposed to Side Elevation  
 as drawing KG015-P106C



(B): Issued for PL, Variation of Conditions (18.11.16/GW)  
 (A): Corrected boundary line (20.05.16/MS)  
 ( ): Issued for Planning Application (24.02.16/GW)  
 Revision: Information (date/drawn by/checked by)



**AS EXISTING** \_ Ground Floor Layout

**HUGH CULLUM ARCHITECTS LTD**  
 Bloomsbury Design  
 61b Judd Street  
 London WC1H 9QT  
 t 020 7383 7647  
 f 020 7387 7645  
 mail@hughcullum.com

**15 Keats Grove**  
 Existing  
 Ground Floor Plan  
 1:100@A3 February 2016  
**KG015-E003(B)**