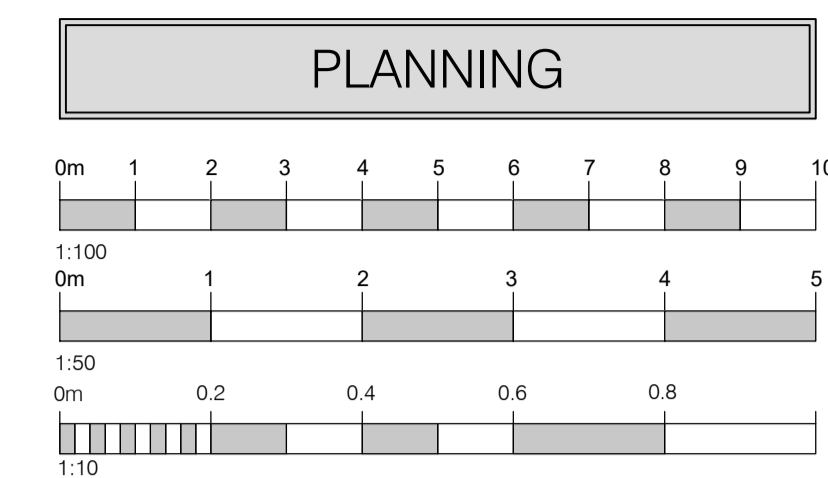


ALL DIMENSIONS TO BE CHECKED ON SITE. COPYRIGHT PROTECTED.



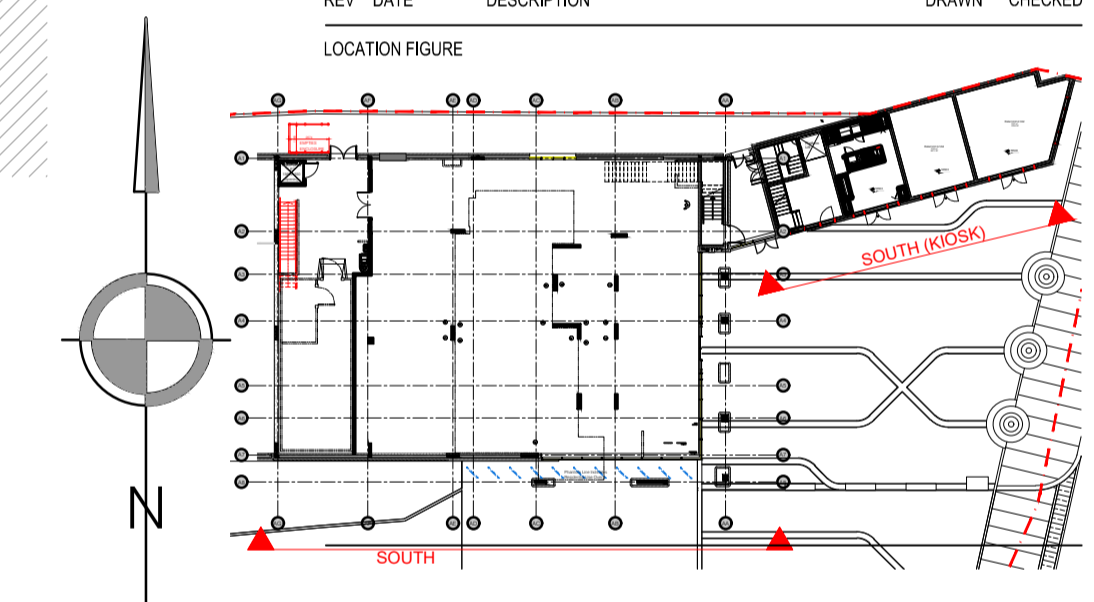
01 PROPOSED EAST ELEVATION
451 1:100 (WITH BRICKWORK)



02 PROPOSED SOUTH ELEVATION
451 1:100 (WITH BRICKWORK)

REV	DATE	DESCRIPTION	DRAWN	CHECKED
04	06.01.17	TEXT UPDATED AND SIGN D SECTION ADDED	CM	FOC
03	14.12.16	SIGN B REMOVED FROM SOUTH ELEVATION	DP	PO
02	30.08.16	MODIFIED TO MATCH NLP COMMENTS	LD	PO
01	15.08.16	ANNOTATIONS REVISED	DP	FOC

LOCATION FIGURE



M&S
EST. 1884

STORE NAME
WEST HAMPSTEAD
COUNTRY
ENGLAND
PROJECT
NEW FOODHALL

DRAWING
PROPOSED EXTERNAL ELEVATIONS AND SIGNAGE DETAILS (SHEET 1 OF 2)

CONSULTANT
LEWIS AND HICKEY
DISCIPLINE DESCRIPTION
ARCHITECTURE
CONSULTANT LOGO

18 Farnham Road
Guildford
Surrey
GU1 4XA
Tel: 01483 560908
Fac: 01483 560950
Email: guildford@lewisandhickey.com

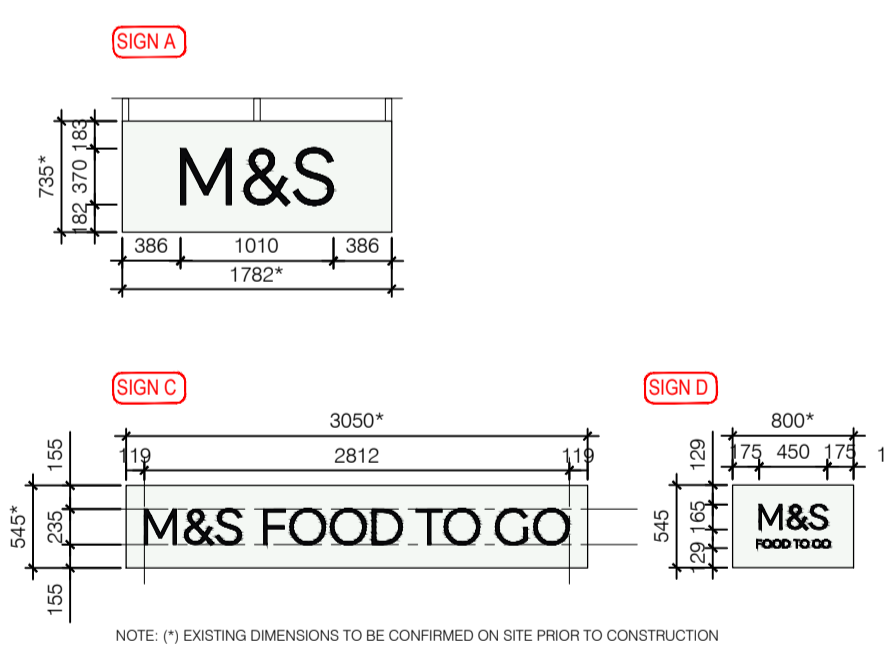
SCALE PAPER SIZE DATE DRAWN CHECKED
VARIES A1 14.07.16 DP FOC

STORE NUMBER PROJECT No DISCIPLINE CODE DRAWING No
Q0206WHP001 A 451

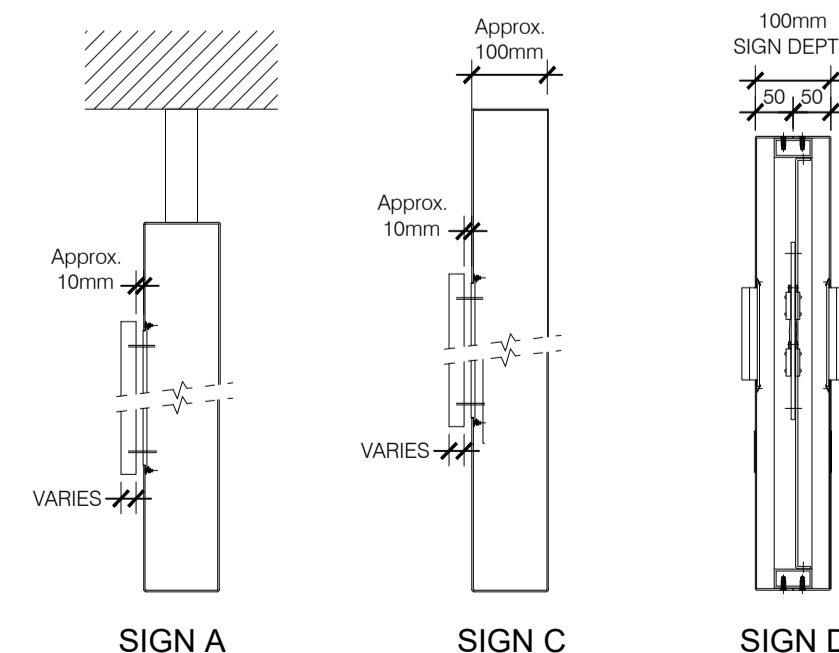
CONSULTANT PROJECT No STATUS REVISION
G4011 P 04



03 PROPOSED SOUTH ELVATION OF KIOSK
451 1:100 PROPOSED



04 PROPOSED SIGNAGE DETAILS
451 1:50



05 TYPICAL SIGNAGE SECTIONS
451 1:10

SIGNS A & C - ALUMINIUM BOX SIGNS (HALO ILLUMINATED)
(HALO ILLUMINATED FASCIA SIGNS AS SHOWN ON ELEVATION)

ILLUMINATION TO 3D TEXT TO COMPLY WITH PART L, SIZED AS DETAIL. LAMP COLOUR 5000K MINIMAX. ILLUMINATION TO BE SPREAD EVENLY WITHIN THE LETTERING (BY MEANS OF WHITE LED'S) TO PROVIDE EVEN SPREAD OF LIGHT ACROSS THE SURFACE OF THE SIGN. NO SHADOWING TO OCCUR FROM THE LETTERING FIXINGS.

LETTERING:
SIGNAGE TO BE 3D LETTERING IN STEEL, SPRAY PAINTED JET BLACK 100% GLOSS, REF: RAL 9005

LINEAR 3D LETTERING. DEPTH TO MATCH THE WIDTH OF THE STEM 'M', 'FOODHALL' DEPTH TO MATCH WIDTH OF THE STEM 'F'. ALL 3D LETTERING OFFSET FROM SIGNAGE FASCIA BY APPROX. 15mm. A SECTION THROUGH THE LETTERS SHOULD BE SQUARE.

STACKED 3D LETTERING. 'M&S' DEPTH TO MATCH THE WIDTH OF THE STEM 'M', 'FOODHALL' DEPTH TO MATCH WIDTH OF THE STEM 'F'. ALL 3D LETTERING OFFSET FROM SIGNAGE FASCIA BY APPROX. 15mm. A SECTION THROUGH THE LETTERS SHOULD BE SQUARE.

FASCIA METAL WORK:
WHITE POLYESTER POWDERCOAT TO MATCH SIGNAL WHITE RAL 9003. GLOSS LEVEL 35-40%
ALL FASCIA PANELS MUST BE SMOOTH AND FLUSH WITH NO BOWING OR GAPS IN JOINTS.
WHERE THE ALUMINIUM SHEETS ARE UP TO 900MM IN HEIGHT, 2MM 14 GAUGE ALUMINIUM SHOULD BE USED AS A MINIMUM.
WHERE SHEETS ARE MORE THAN 900 HIGH, 3MM 10 GAUGE ALUMINIUM SHOULD BE USED AS A MINIMUM.
'SLIP JOINTS' SHOULD BE USED TO JOIN ALL SIGNAGE PANELS TOGETHER. IT IS THE MAIN CONTRACTOR'S RESPONSIBILITY TO ENSURE THAT THE BACKGROUND FOR FIXING ALL NEW SIGNAGE TOO IS COMPLETELY STABLE AND FIT FOR PURPOSE PRIOR TO THE SIGNAGE BEING INSTALLED. THE SIGNAGE CONTRACTOR'S SITE VISIT MUST BE CARRIED OUT IN ADVANCE TO ASCERTAIN IF THERE IS ANY DOUBT ABOUT THE SUITABILITY OF THE SUBSTRATE. THOROUGH INVESTIGATIONS MUST BE MADE, EVEN REMOVING EXISTING SIGNAGE TEMPORARILY, SO THE EXTENT OF THE REPAIRS THAT ARE REQUIRED CAN BE ASCERTAINED AND REMEDIAL WORKS CARRIED OUT. IN THE EVENT THAT REPAIRS TO MOVING FASCIA PANELS ARE REQUIRED AFTER INSTALLATION, STIFFENERS MAY NEED TO BE FITTED TO INDIVIDUAL FASCIA PANELS. THIS IS THE RESPONSIBILITY OF THE SIGNAGE CONTRACTOR AND IS CARRIED OUT ON A CASE BY CASE BASIS, USUALLY AS PART OF THE SNAGGING PROCESS.

NOTE: ILLUMINATION LEVEL OF LED'S WITHIN HALO LETTERING TO BE 600 CANDELAS

SIGN D - ALUMINIUM BUS STOP SIGN (INTERNALLY ILLUMINATED)
(INTERNALLY ILLUMINATED HALO EFFECT BUS STOP SIGN AS SHOWN ON ELEVATION)

ILLUMINATION TO 3D TEXT TO COMPLY WITH PART L, SIZED AS DETAIL. LAMP COLOUR TETRA MINIMAX WHITE 5000K LED'S FITTED BACK TO BACK ONTO 5mm CLEAR PERSPEX CARRIER PANEL. ILLUMINATION TO BE SPREAD EVENLY WITHIN THE LETTERING (BY MEANS OF WHITE LED'S) TO PROVIDE EVEN SPREAD OF LIGHT ACROSS THE SURFACE OF THE SIGN. NO SHADOWING TO OCCUR FROM THE LETTERING FIXINGS.

'M&S' LETTERING LASER CUT & PUSHED THROUGH FROM OPAL 030 PERSPEX (DEPTH BASED ON O/A SIZE OF BUS STOP). FACE APPLIED WITH 10mm BLACK ARCYLIC WITH POLISHED EDGES.

'FOOD TO GO' LETTERING FACE APPLIED WITH BLACK VINYL SPANDEX (IP 5708).

14 GAUGE ALI PANELS FINISHED WHITE RAL 9003 GLOSS LEVEL 35-40%. FINISH MATT WHITE INTERNALLY.

3mm OPAL 030 PERSPEX BACKING TO LETTERS

NOTE: ILLUMINATION LEVEL OF LED'S WITHIN HALO LETTERING TO BE 600 CANDELAS

GENERAL

EACH SIGNAGE MANUFACTURER MUST COMPLETE THEIR OWN SET OF PROJECT SPECIFIC DESIGN DRAWINGS FOR APPROVAL BY THE M&S DESIGN TEAM. THE DETAILS MATERIAL FINISHES AND QUALITY EXPECTED ARE CLEARLY INDICATED. THESE MUST BE ADHERED TO WITHOUT DEVIATION. IT WILL BE ASSUMED BY M&S THAT ALL MANUFACTURERS ARE AWARE OF THIS SPECIFICATION AND THAT IT IS BEING FOLLOWED EXACTLY. NO DEVIATIONS WILL BE ACCEPTED UNLESS AGREED IN ADVANCE BY THE M&S DESIGN TEAM.