

General Notes
 Do not scale from this drawing
 All dimensions to be verified on site
 To be read in conjunction with all relevant documents
 In the event of discrepancy notify the Architect immediately
 This document is copyright of Hugh Cullum Architects Ltd

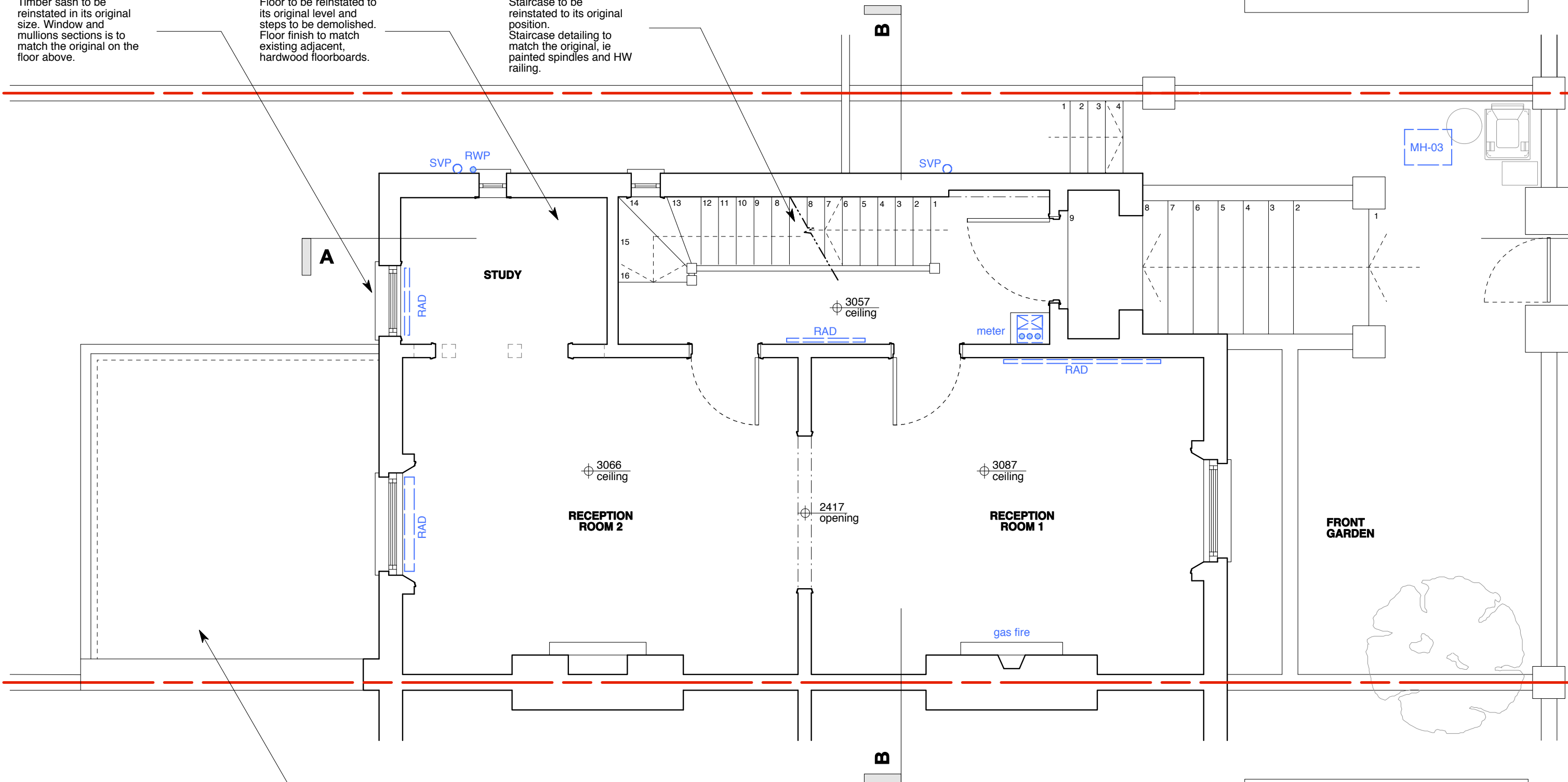
Issue Status
 SK Sketch
 D Design
 T Tender

E Existing Condition
 P Permissions
 C Contract

Timber sash to be reinstated in its original size. Window and mullions sections is to match the original on the floor above.

Floor to be reinstated to its original level and steps to be demolished. Floor finish to match existing adjacent, hardwood floorboards.

Staircase to be reinstated to its original position. Staircase detailing to match the original, ie painted spindles and HW railing.



Sedum Roof over the proposed extension

(_): Issued for Planning (06.01.17/OA/HC)
 Revision: Information (date/drawn by/checked by)

0m 0.5m 1m 5m



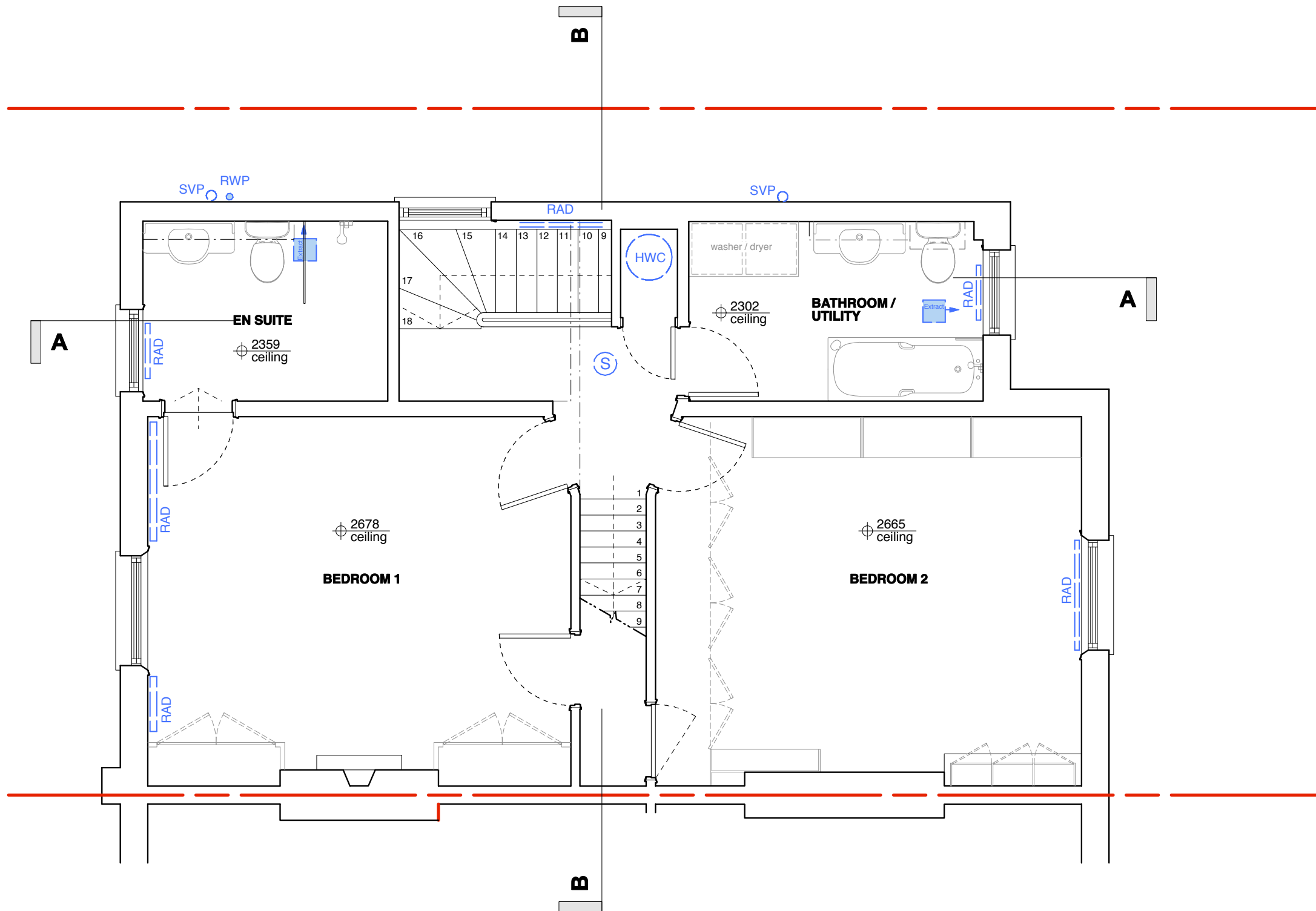
AS PROPOSED _ Ground Floor Layout

HUGH CULLUM ARCHITECTS LTD
 Bloomsbury Design
 61b Judd Street
 London WC1H 9QT
 t 020 7383 7647
 f 020 7387 7645
 mail@hughcullum.com

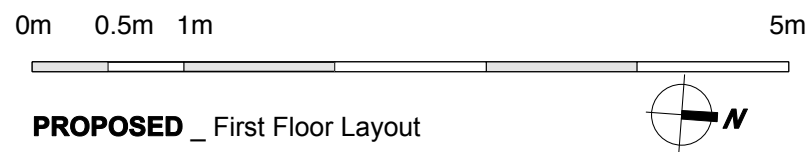
2 Provost Road
 Proposal
 Ground Floor
 1:50@A3 January 2017
 PR002-P011(_)

General Notes
 Do not scale from this drawing
 All dimensions to be verified on site
 To be read in conjunction with all relevant documents
 In the event of discrepancy notify the Architect immediately
 This document is copyright of Hugh Cullum Architects Ltd

Issue Status
 SK Sketch E Existing Condition
 D Design P Permissions
 T Tender C Contract



Note: No changes proposed to this floor



PROPOSED _ First Floor Layout

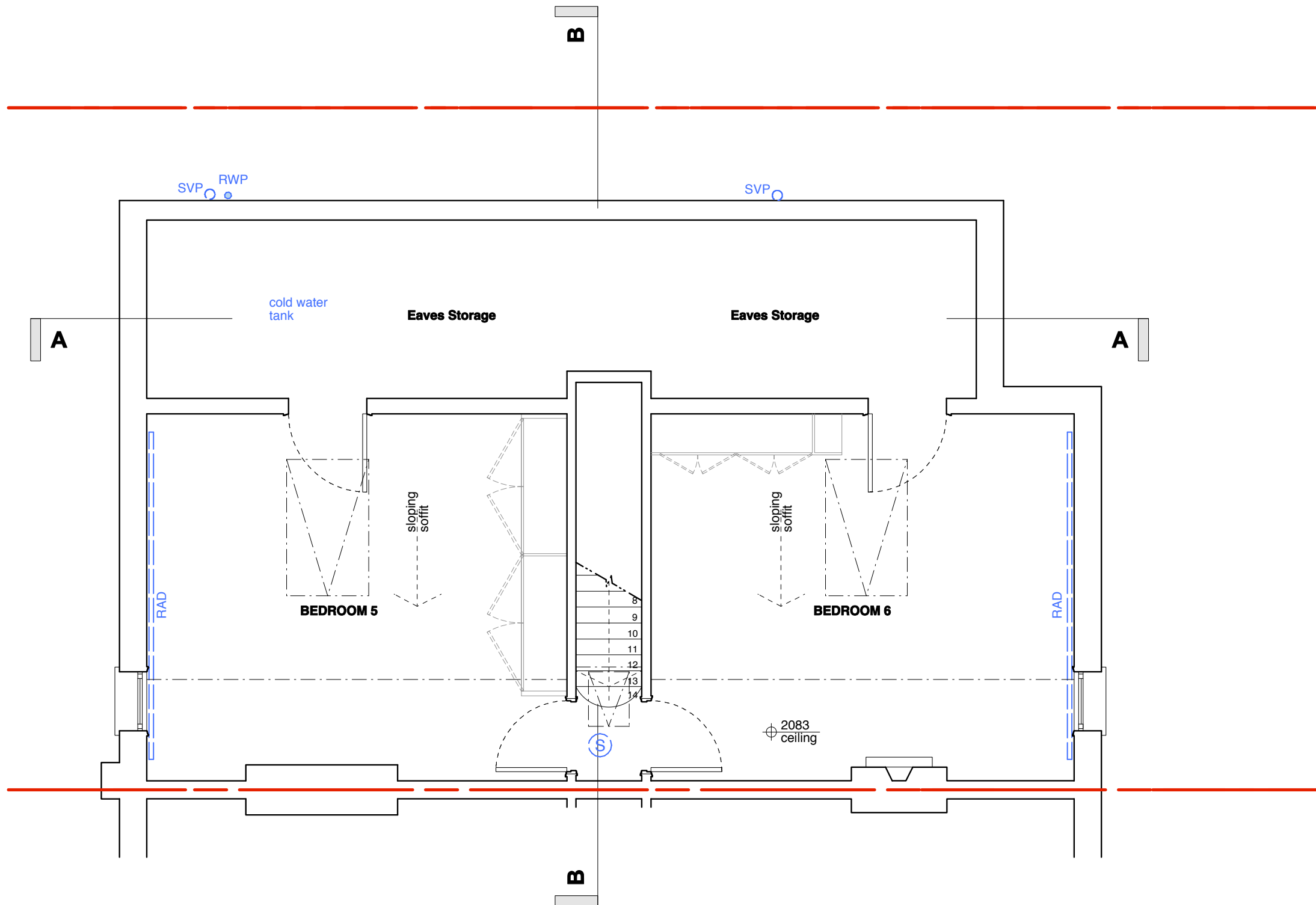
(_): Issued for Planning (06.01.17/OA/HC)
 Revision: Information (date/drawn by/checked by)

HUGH CULLUM ARCHITECTS LTD
 Bloomsbury Design
 61b Judd Street
 London WC1H 9QT
 t 020 7383 7647
 f 020 7387 7645
 mail@hughcullum.com

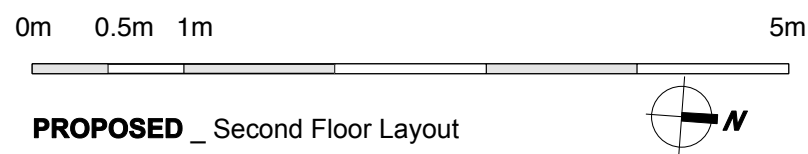
2 Provost Road
 Proposal
 First Floor
 1:50@A3 January 2017
 PR002-P012(_)

General Notes
 Do not scale from this drawing
 All dimensions to be verified on site
 To be read in conjunction with all relevant documents
 In the event of discrepancy notify the Architect immediately
 This document is copyright of Hugh Cullum Architects Ltd

Issue Status
 SK Sketch E Existing Condition
 D Design P Permissions
 T Tender C Contract



Note: No changes proposed to this floor



PROPOSED _ Second Floor Layout

(_): Issued for Planning (06.01.17/OA/HC)
 Revision: Information (date/drawn by/checked by)

HUGH CULLUM **2 Provost Road**
 ARCHITECTS LTD
 Bloomsbury Design
 61b Judd Street
 London WC1H 9QT
 t 020 7383 7647
 f 020 7387 7645
 mail@hughcullum.com

Proposal
 Second Floor
 1:50@A3 January 2017
 PR002-P013(_)



Note: No changes proposed to this elevation



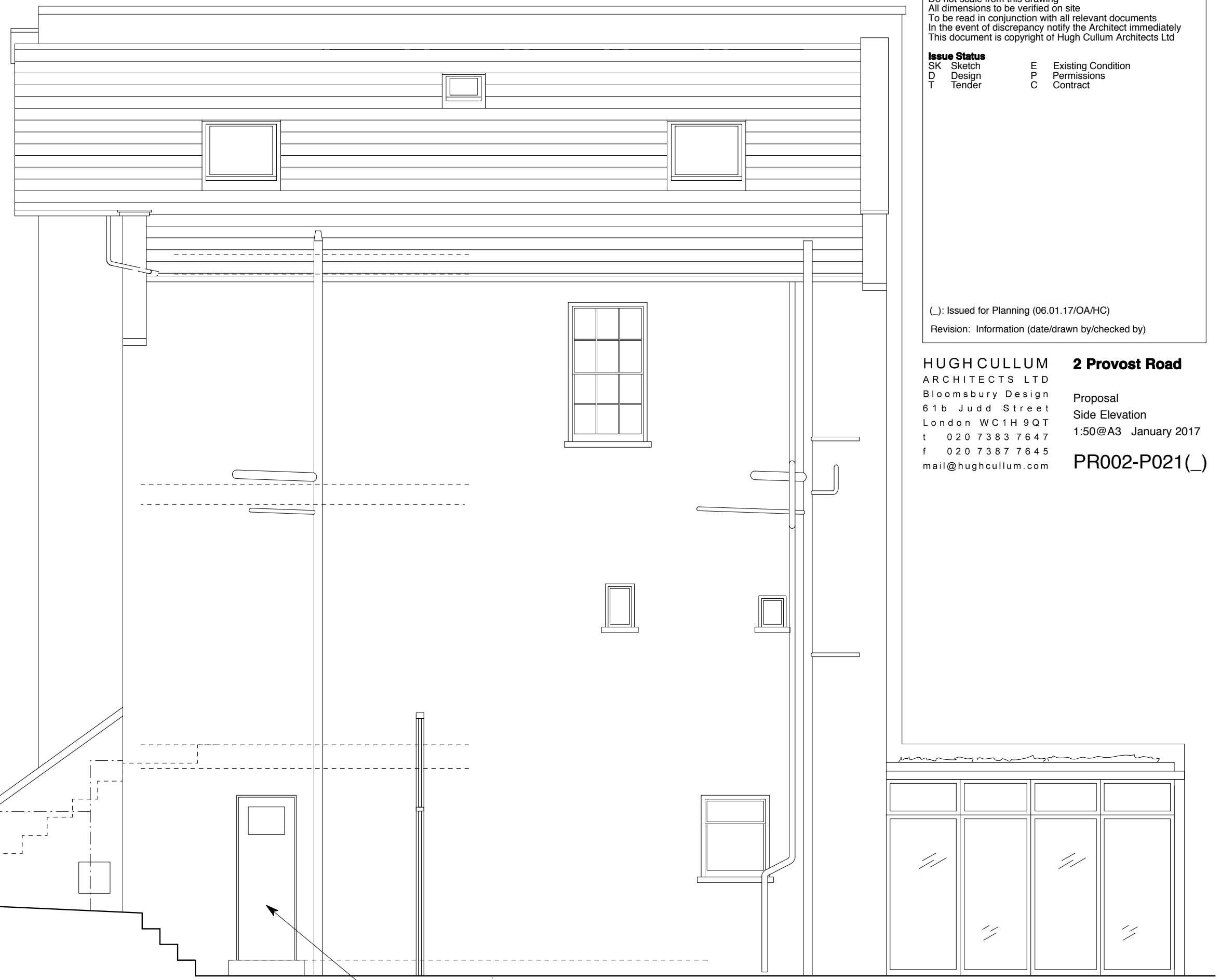
PROPOSED _ Front Elevation

General Notes
 Do not scale from this drawing
 All dimensions to be verified on site
 To be read in conjunction with all relevant documents
 In the event of discrepancy notify the Architect immediately
 This document is copyright of Hugh Cullum Architects Ltd

Issue Status
 SK Sketch E Existing Condition
 D Design P Permissions
 T Tender C Contract

(_): Issued for Planning (06.01.17/OA/HC)
 Revision: Information (date/drawn by/checked by)

HUGH CULLUM **2 Provost Road**
 ARCHITECTS LTD
 Bloomsbury Design
 61b Judd Street
 London WC1H 9QT
 t 020 7383 7647
 f 020 7387 7645
 mail@hughcullum.com
 Proposal
 Front Elevation
 1:50@A3 January 2017
 PR002-P020(_)



General Notes
 Do not scale from this drawing
 All dimensions to be verified on site
 To be read in conjunction with all relevant documents
 In the event of discrepancy notify the Architect immediately
 This document is copyright of Hugh Cullum Architects Ltd

Issue Status

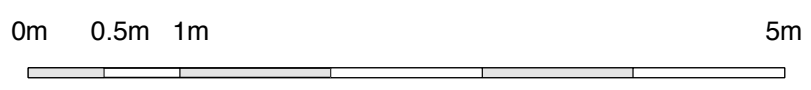
| | | | |
|----|--------|---|--------------------|
| SK | Sketch | E | Existing Condition |
| D | Design | P | Permissions |
| T | Tender | C | Contract |

(_): Issued for Planning (06.01.17/OA/HC)
 Revision: Information (date/drawn by/checked by)

HUGH CULLUM ARCHITECTS LTD
 Bloomsbury Design
 61b Judd Street
 London WC1H 9QT
 t 020 7383 7647
 f 020 7387 7645
 mail@hughcullum.com

2 Provost Road
 Proposal
 Side Elevation
 1:50@A3 January 2017
 PR002-P021(_)

Note: No changes proposed to this elevation



AS EXISTING _ Side Elevation

Door to be moved to the position of the window

General Notes
 Do not scale from this drawing
 All dimensions to be verified on site
 To be read in conjunction with all relevant documents
 In the event of discrepancy notify the Architect immediately
 This document is copyright of Hugh Cullum Architects Ltd

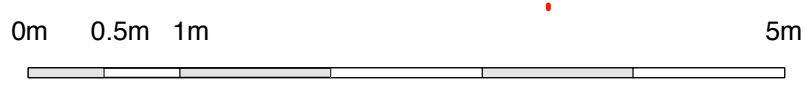
Issue Status
 SK Sketch E Existing Condition
 D Design P Permissions
 T Tender C Contract



Window here to be reinstated to its previous size. Window and mullions section to match the original on the floor above.

New opening to be created to here. Detailing to match in material and style the original windows and doors.

Sedum roof
 Conservatory style
 Extension

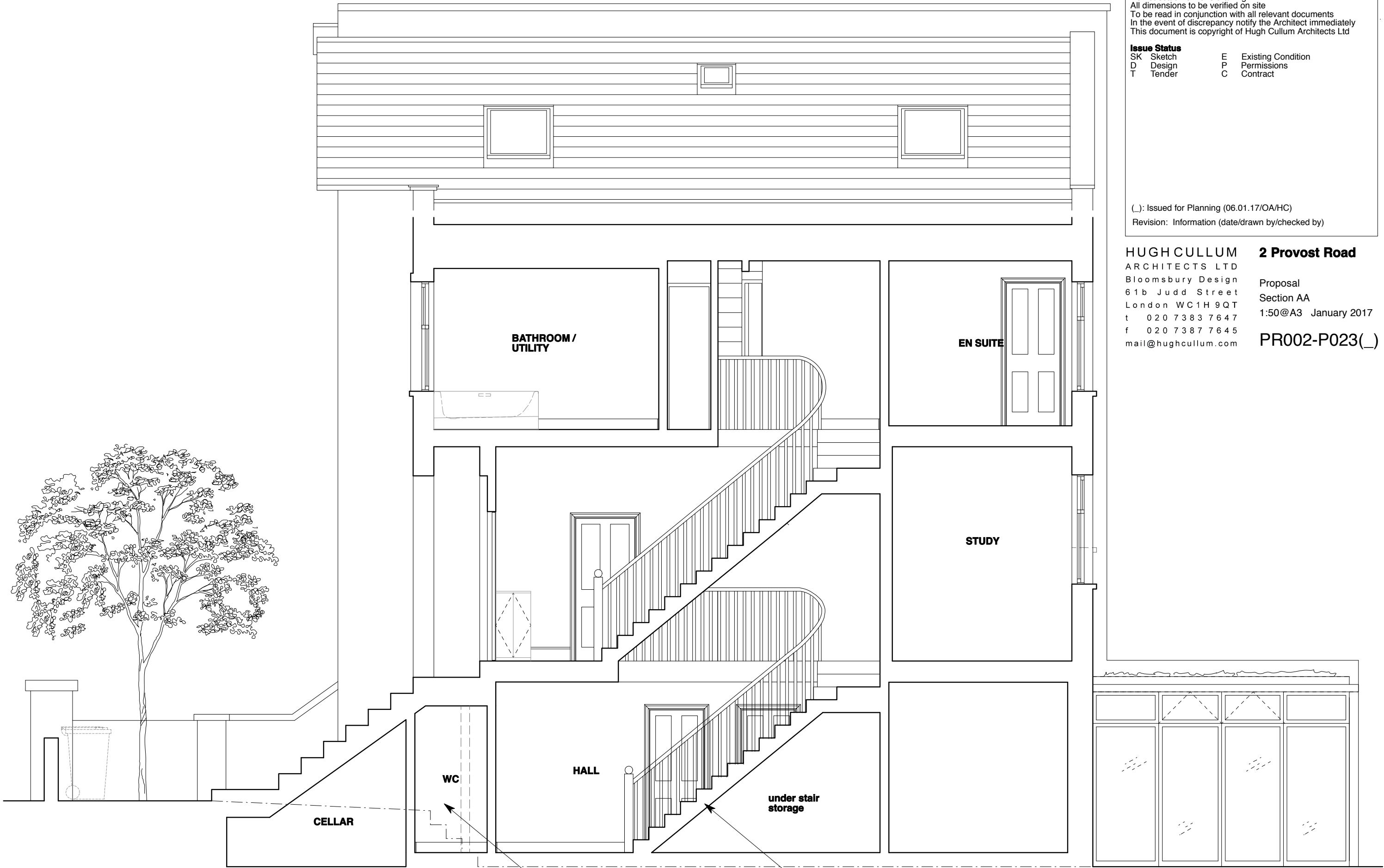


(_): Issued for Planning (06.01.17/OA/HC)
 Revision: Information (date/drawn by/checked by)

AS PROPOSED _ Rear Elevation

HUGH CULLUM **2 Provost Road**
 ARCHITECTS LTD
 Bloomsbury Design
 61b Judd Street
 London WC1H 9QT
 t 020 7383 7647
 f 020 7387 7645
 mail@hughcullum.com

Proposal
 Rear Elevation
 1:50@A3 January 2017
PR002-P022(_)



General Notes
 Do not scale from this drawing
 All dimensions to be verified on site
 To be read in conjunction with all relevant documents
 In the event of discrepancy notify the Architect immediately
 This document is copyright of Hugh Cullum Architects Ltd

| | |
|---------------------|----------------------|
| Issue Status | E Existing Condition |
| SK Sketch | P Permissions |
| D Design | C Contract |
| T Tender | |

(_): Issued for Planning (06.01.17/OA/HC)
 Revision: Information (date/drawn by/checked by)

HUGH CULLUM ARCHITECTS LTD
 Bloomsbury Design
 61b Judd Street
 London WC1H 9QT
 t 020 7383 7647
 f 020 7387 7645
 mail@hughcullum.com

2 Provost Road
 Proposal
 Section AA
 1:50@A3 January 2017
 PR002-P023(_)

0m 0.5m 1m 5m

AS PROPOSED _ Section AA

WC

HALL

BATHROOM / UTILITY

EN SUITE

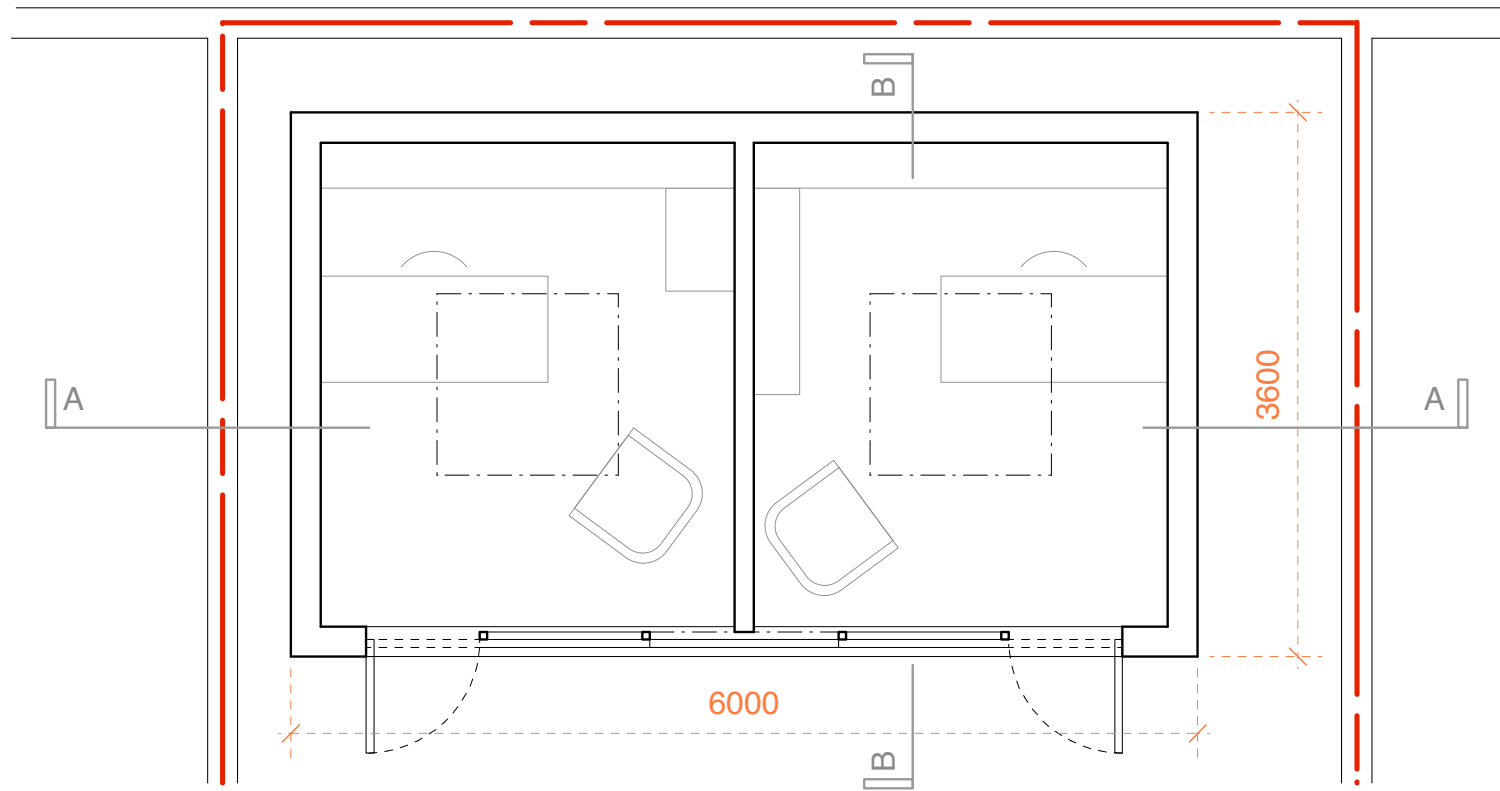
STUDY

CELLAR

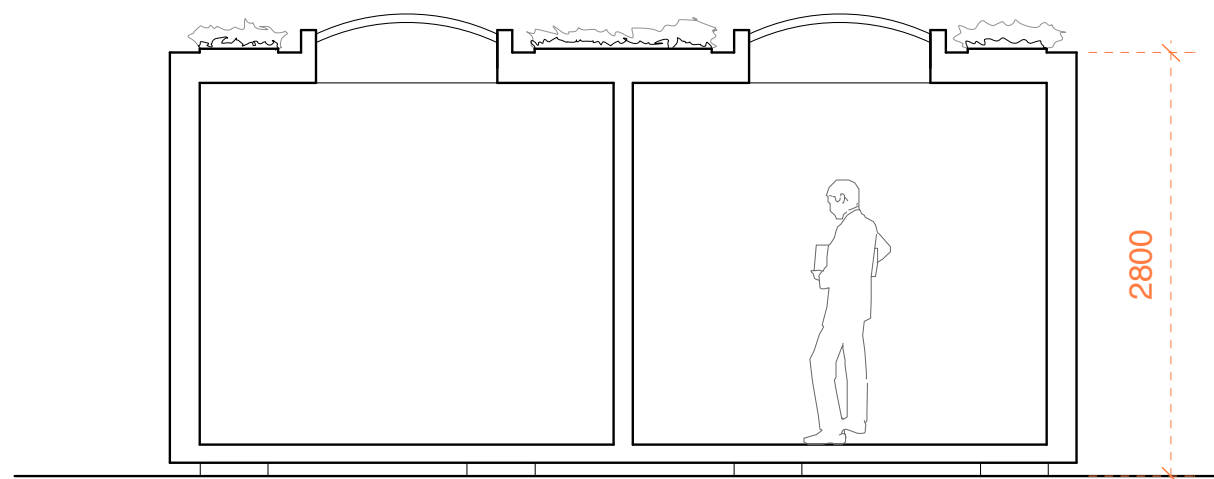
under stair storage

New WC to be formed here

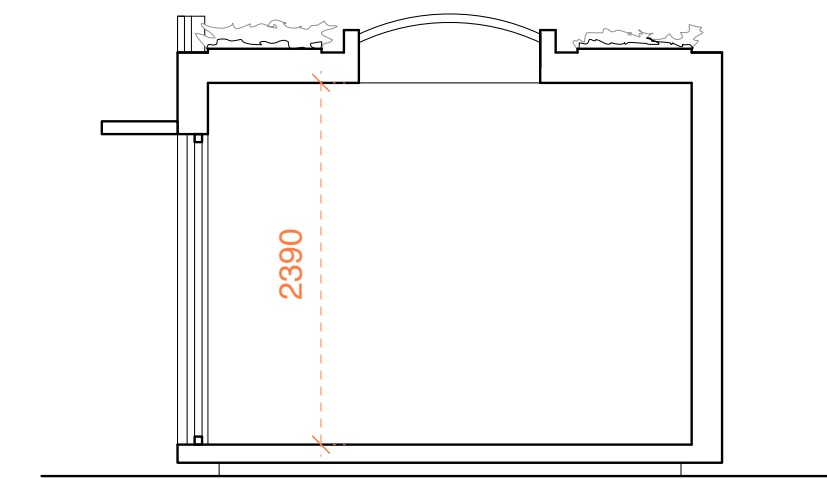
Staircase to be reinstated to its original position. Staircase detailing to match the original, ie painted spindles and HW railing.



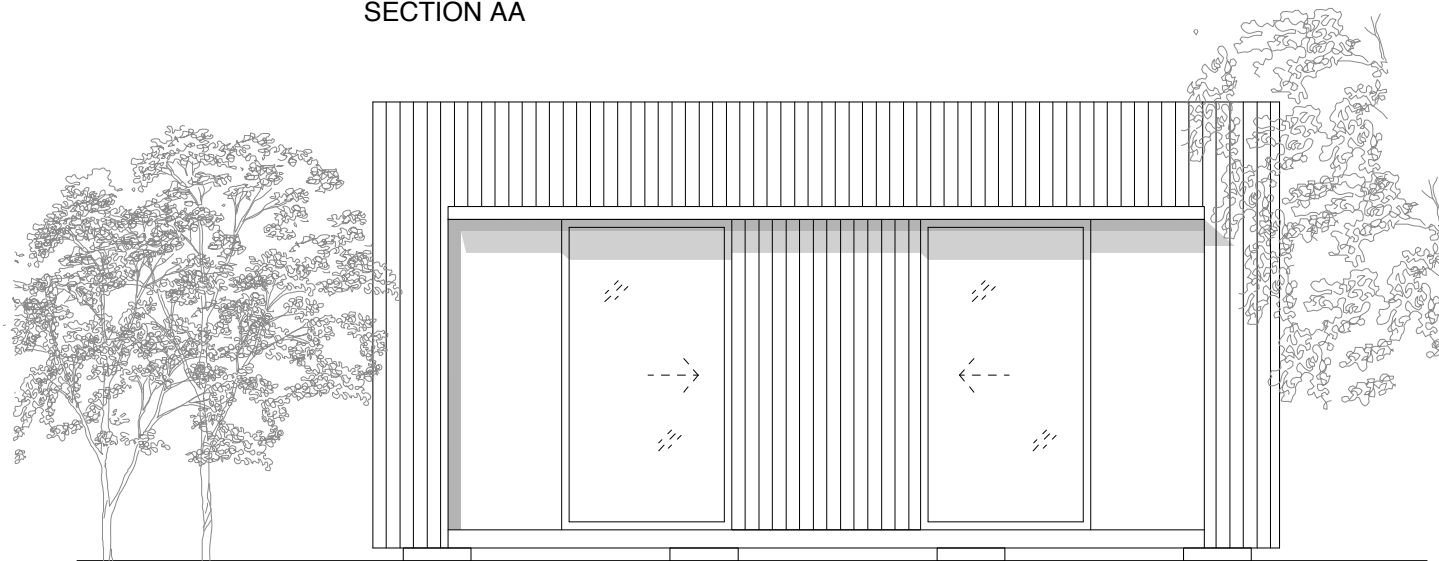
PLAN



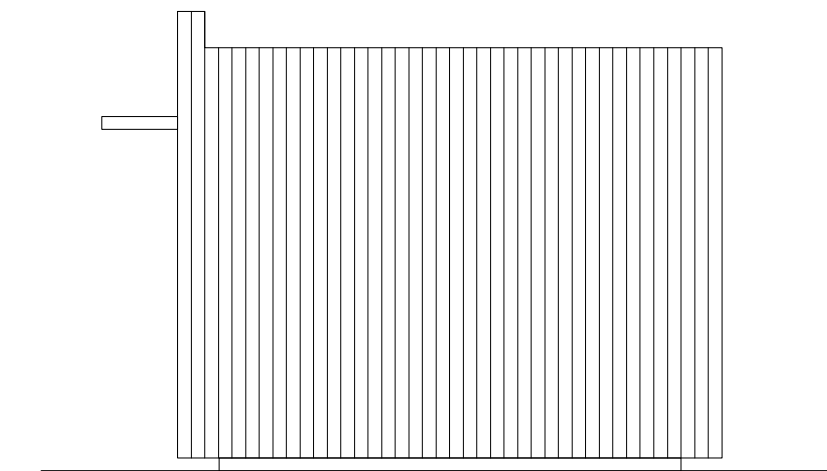
SECTION AA



SECTION BB



FRONT ELEVATION



SIDE ELEVATION



AS PROPOSED _ Garden Outbuilding

General Notes
 Do not scale from this drawing
 All dimensions to be verified on site
 To be read in conjunction with all relevant documents
 In the event of discrepancy notify the Architect immediately
 This document is copyright of Hugh Cullum Architects Ltd

| | | | |
|---------------------|--------|---|--------------------|
| Issue Status | | E | Existing Condition |
| SK | Sketch | P | Permissions |
| D | Design | C | Contract |
| T | Tender | | |

(): Revision Information (00.00.02/AA/BB)
 Revision: Information (date/drawn by/checked by)

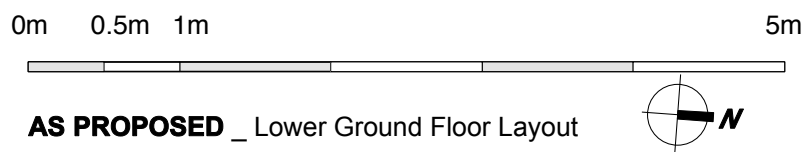
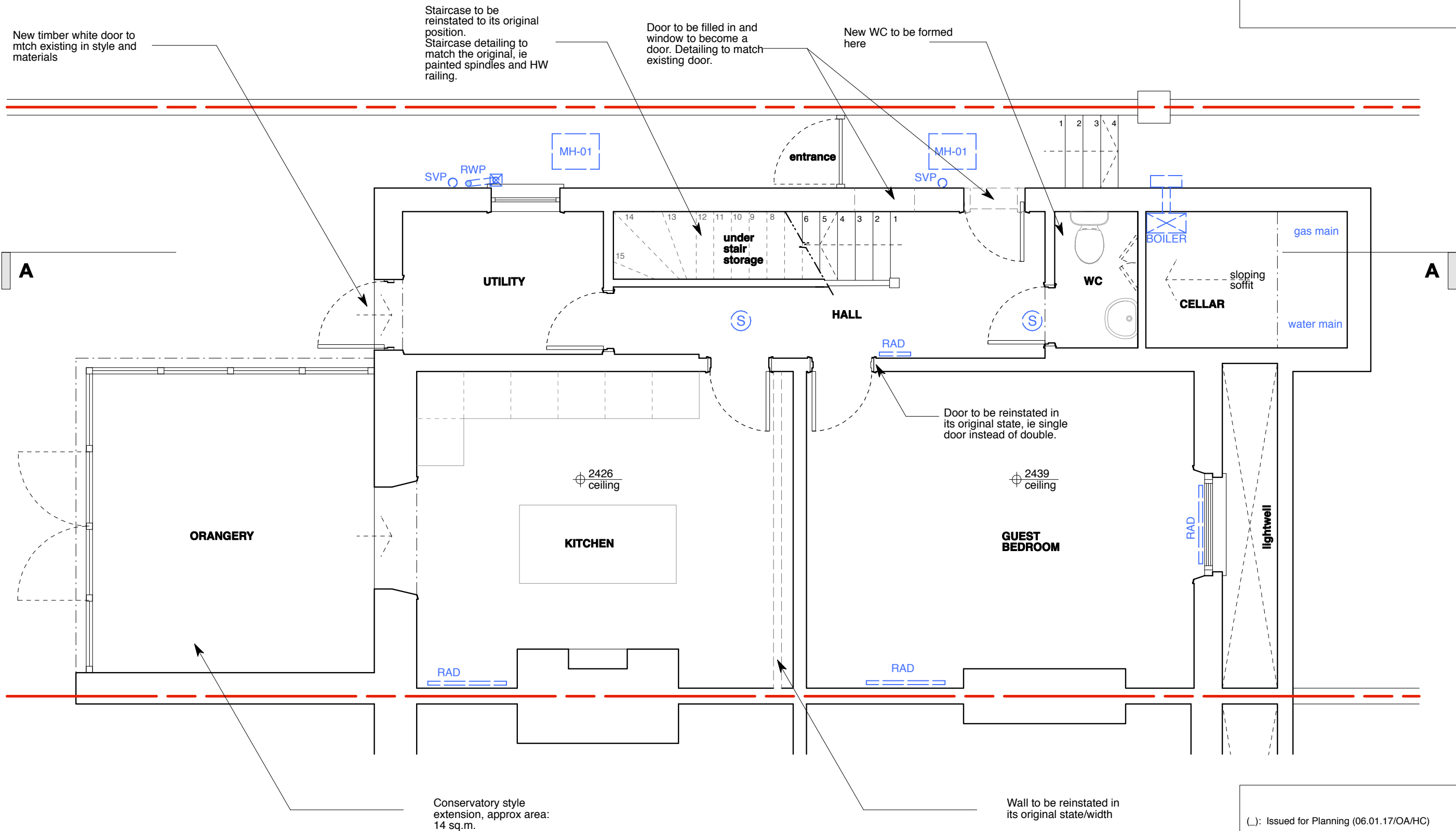
HUGH CULLUM ARCHITECTS LTD
 Bloomsbury Design
 61b Judd Street
 London WC1H 9QT
 t 020 7383 7647
 f 020 7387 7645
 mail@hughcullum.com

2 Provost Road
 Proposal
 Garden Outbuilding
 1:50@A3 January 2017
PR002-P025()

General Notes
 Do not scale from this drawing
 All dimensions to be verified on site
 To be read in conjunction with all relevant documents
 In the event of discrepancy notify the Architect immediately
 This document is copyright of Hugh Cullum Architects Ltd

Issue Status
 SK Sketch
 D Design
 T Tender

E Existing Condition
 P Permissions
 C Contract



(_): Issued for Planning (06.01.17/OA/HC)
 Revision: Information (date/drawn by/checked by)

HUGH CULLUM ARCHITECTS LTD
 Bloomsbury Design
 61b Judd Street
 London WC1H 9QT
 t 020 7383 7647
 f 020 7387 7645
 mail@hughcullum.com

2 Provost Road
 Proposal
 Lower Ground Floor
 1:50@A3 January 2017
 PR002-P010(_)