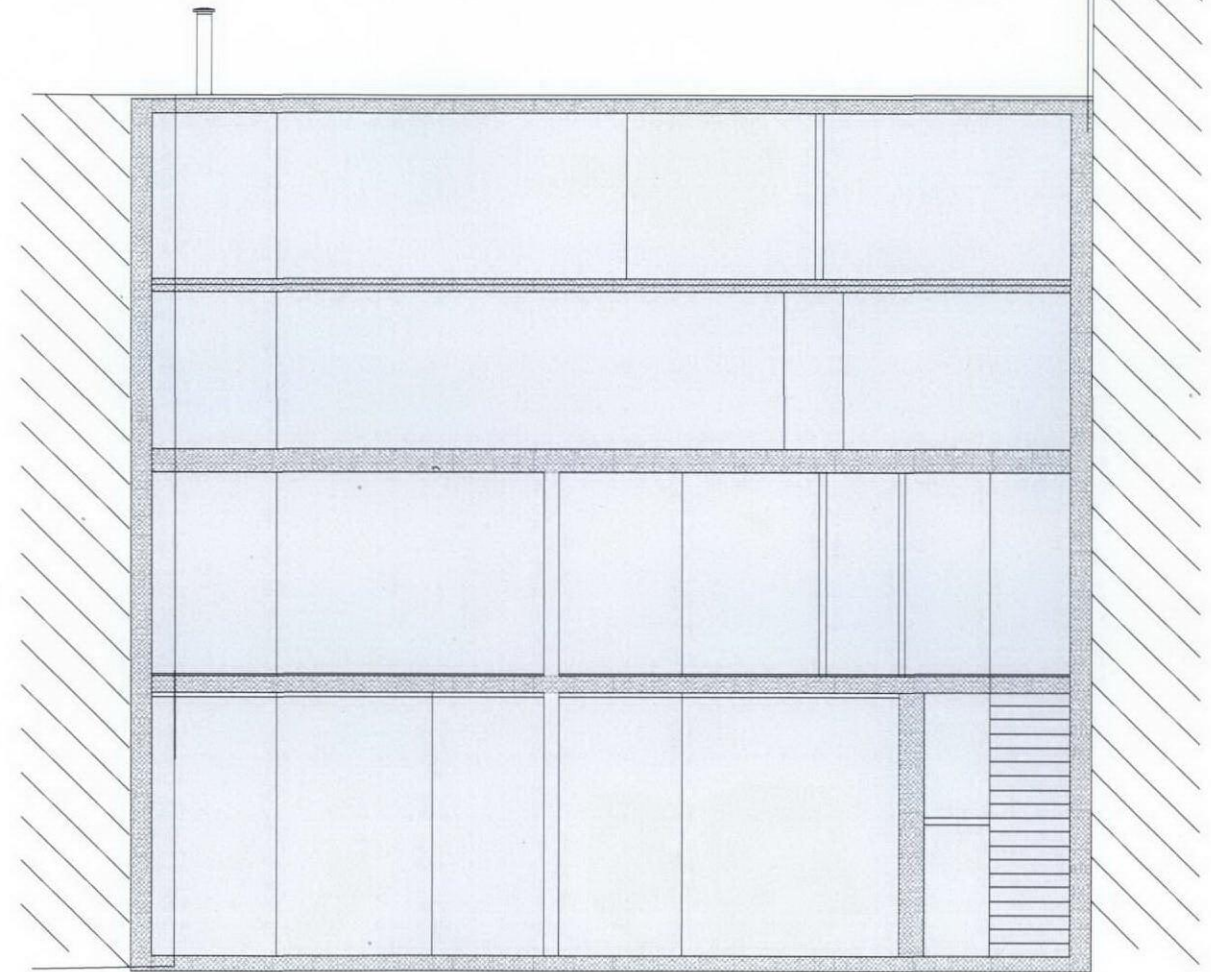
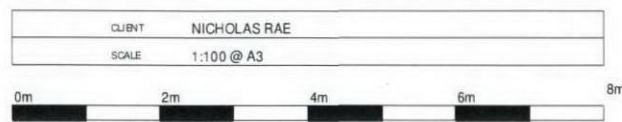
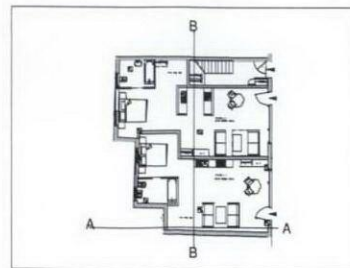




SECTION A-A
2012 PROPOSAL



SECTION B-B
2012 PROPOSAL



NICHOLAS RAE & ASSOCIATES LTD 29/30 KING'S MEWS, LONDON WC1 NICK@NRAE.CO.UK Tel: +44(0) 7775 894889	
SITE	29/30 KING'S MEWS, LONDON WC1
DRAWING TITLE	SECTION A-A & B-B PROPOSED
DRAWING REF	3005-B 29-30KM
DATE	03 DEC 2012