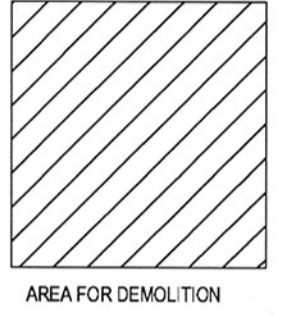
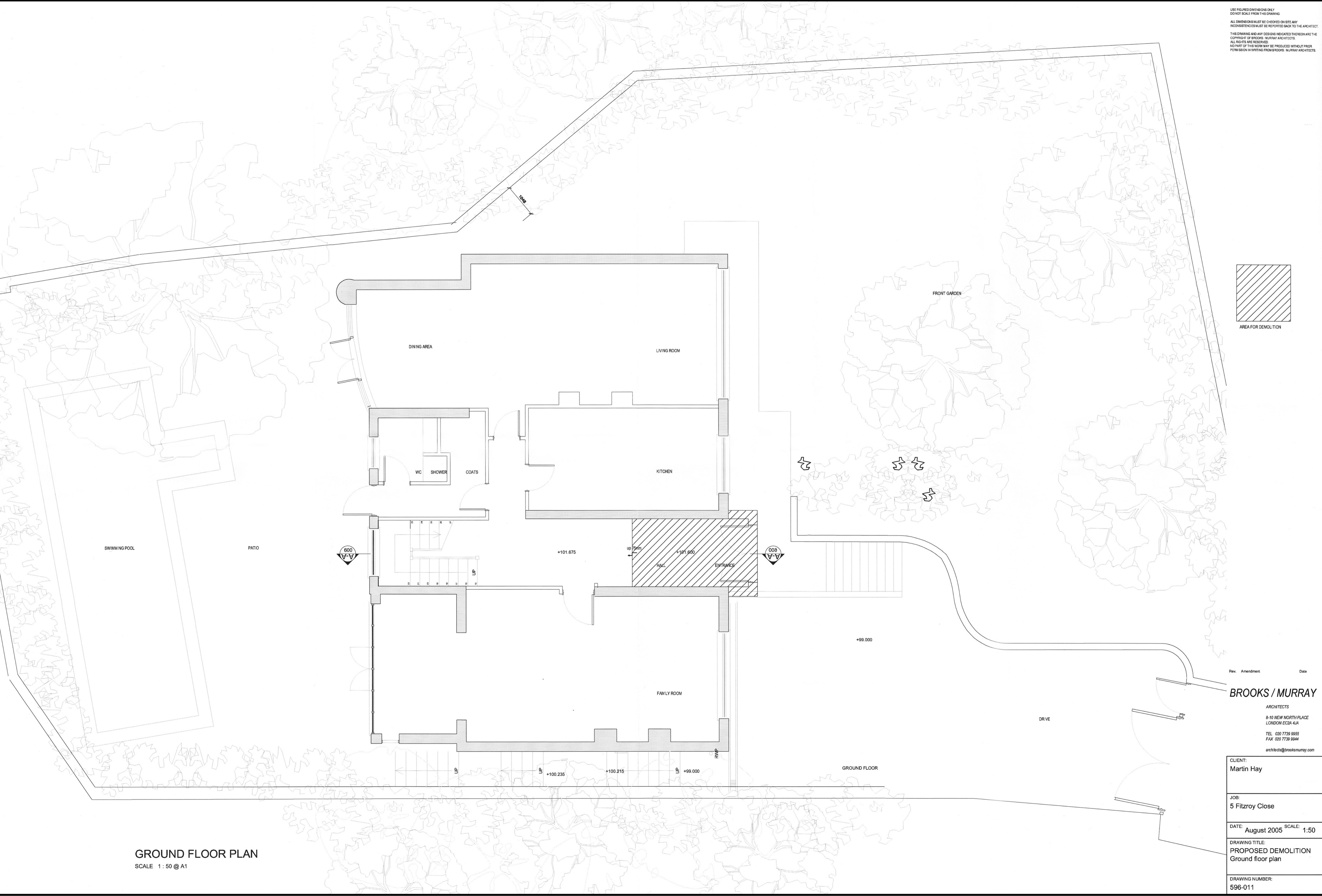


USE FIGURED DIMENSIONS ONLY.  
 DO NOT SCALE FROM THIS DRAWING.  
 ALL DIMENSIONS MUST BE CHECKED ON SITE. ANY  
 INCONSISTENCIES MUST BE REPORTED BACK TO THE ARCHITECT.  
 THIS DRAWING AND ANY DESIGNS INDICATED THEREON ARE THE  
 COPYRIGHT OF BROOKS / MURRAY ARCHITECTS.  
 ALL RIGHTS ARE RESERVED.  
 NO PART OF THIS WORK MAY BE PRODUCED WITHOUT PRIOR  
 PERMISSION IN WRITING FROM BROOKS / MURRAY ARCHITECTS.



AREA FOR DEMOLITION



**GROUND FLOOR PLAN**  
 SCALE 1:50 @ A1

Rev. Amendment. Date  
**BROOKS / MURRAY**  
 ARCHITECTS  
 8-10 NEW NORTH PLACE  
 LONDON EC2A 4JA  
 TEL 020 7739 9955  
 FAX 020 7739 9944  
 architects@brooksmurray.com

CLIENT: Martin Hay
JOB: 5 Fitzroy Close
DATE: August 2005 SCALE: 1:50
DRAWING TITLE: PROPOSED DEMOLITION Ground floor plan
DRAWING NUMBER: 596-011