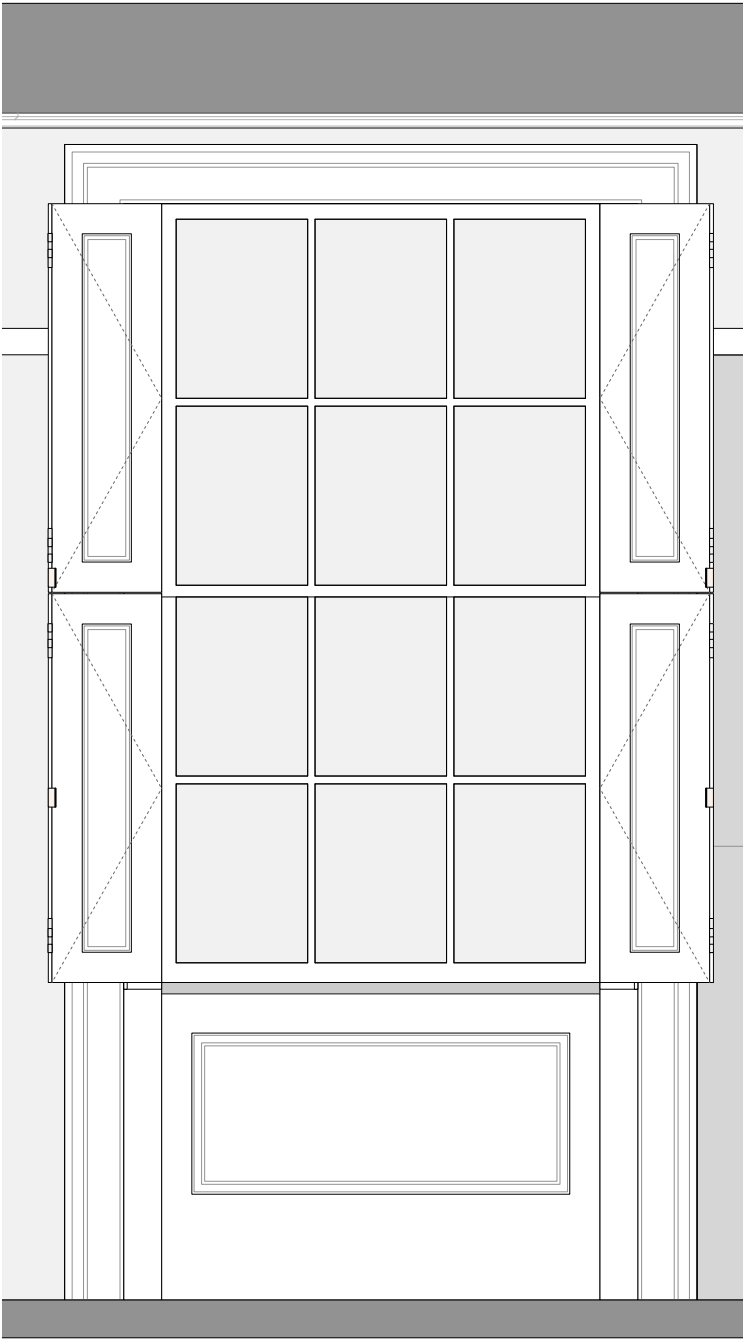
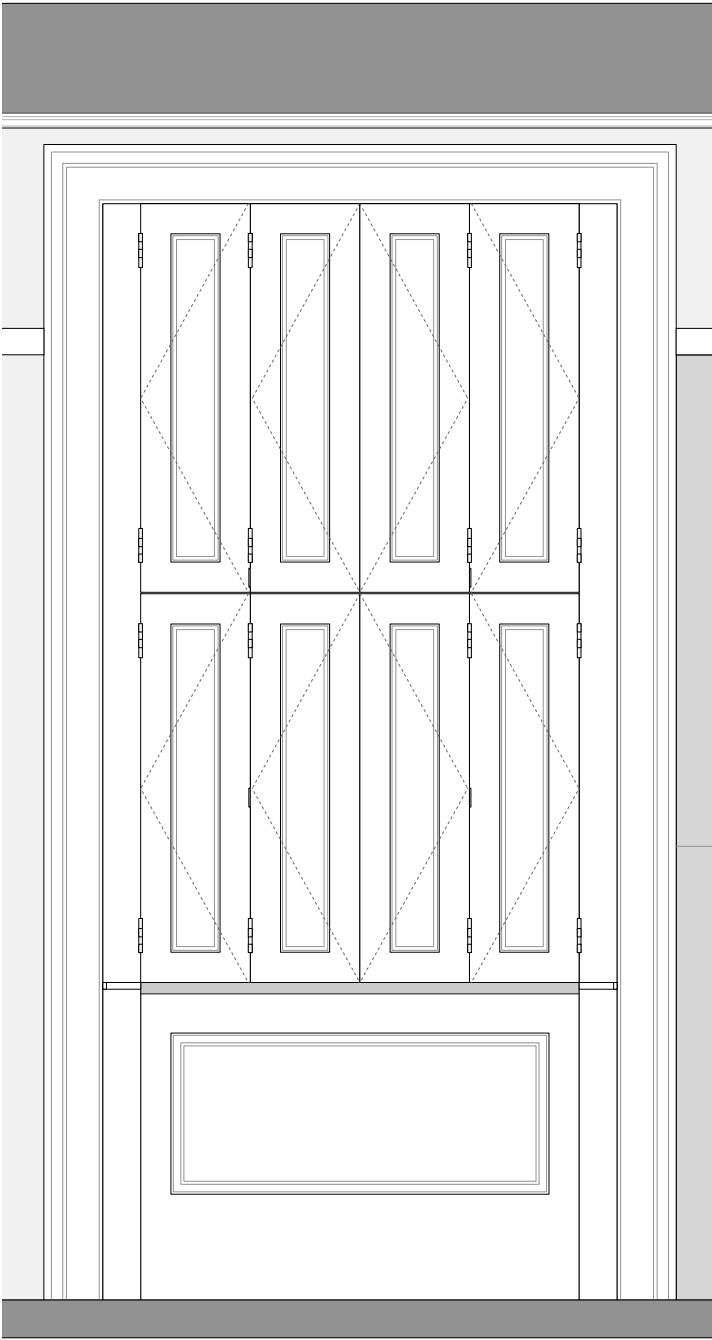


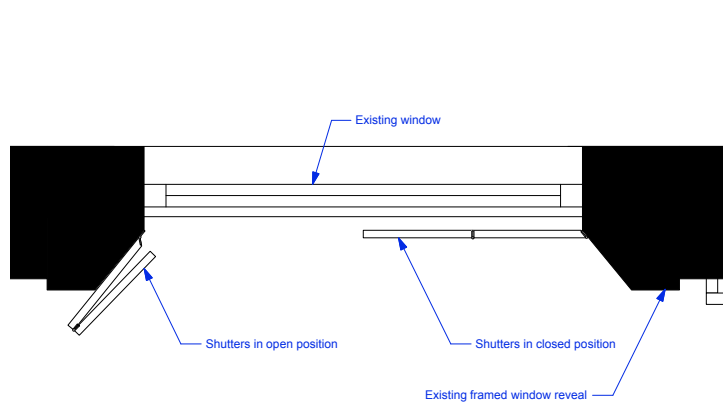
1 TYPICAL ELEVATION
Scale: 1:10



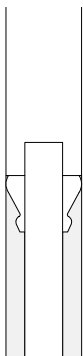
3 TYPICAL ELEVATION - SHUTTERS OPEN
Scale: 1:10



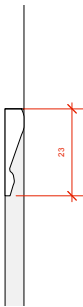
4 TYPICAL ELEVATION - SHUTTERS CLOSED
Scale: 1:10



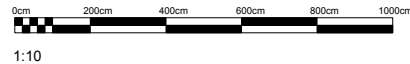
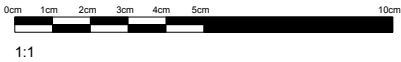
2 TYPICAL PLAN SECTION
Scale: 1:10



5 TYPICAL SHUTTER SECTION PROFILE DETAIL
1:2



6 TYPICAL PANNELLING SECTION PROFILE DETAIL
1:1



Note:
New painted timber shutters to replace existing
timber shutters to ground floor windows W.03 and
W.07 and first floor windows W.08 & W.09

ISSUE	DATE	COMMENT
14.12.16		Issue for planning and listed building consent
ColenderHowarth	1198	4 OVAL ROAD
Drawing no.	622	PROPOSED TYPICAL WINDOW SHUTTER DETAIL TO GROUND & FIRST FLOOR
Scale	Varies	A3 ML -