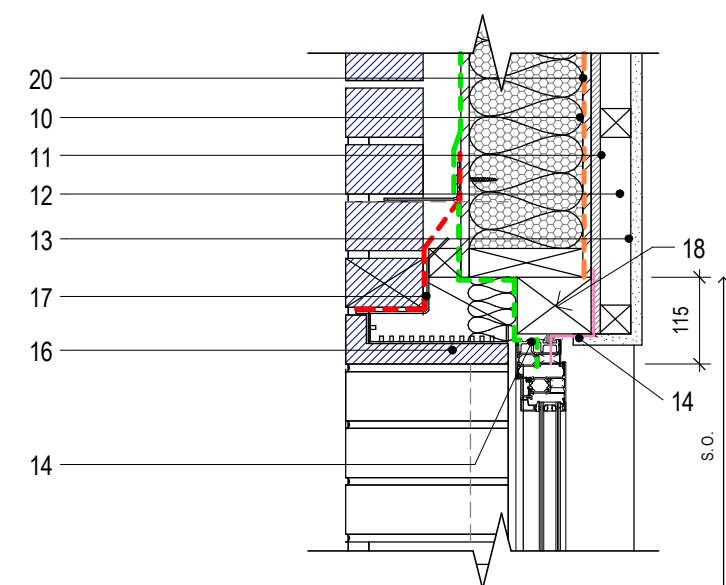
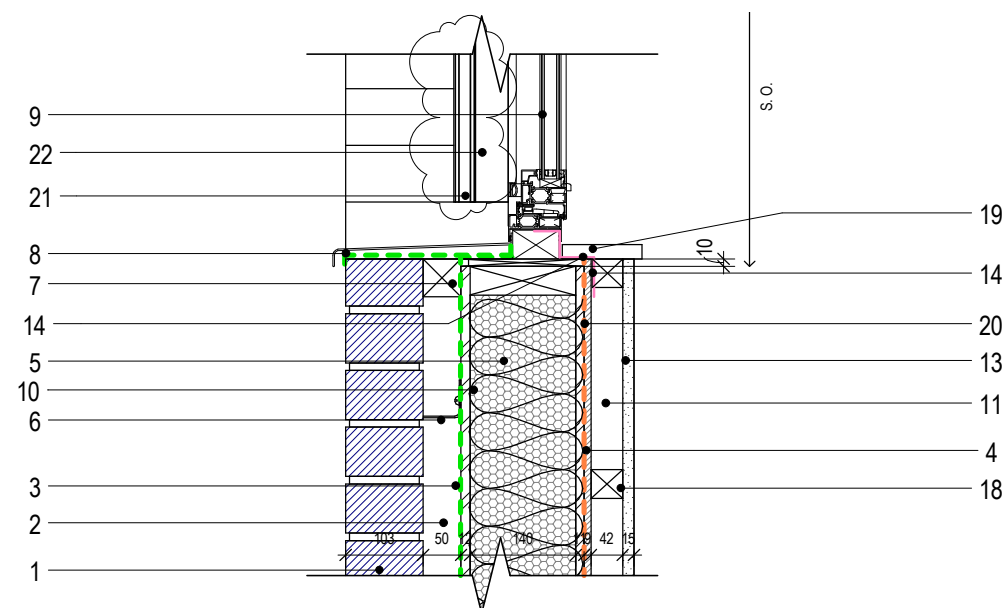


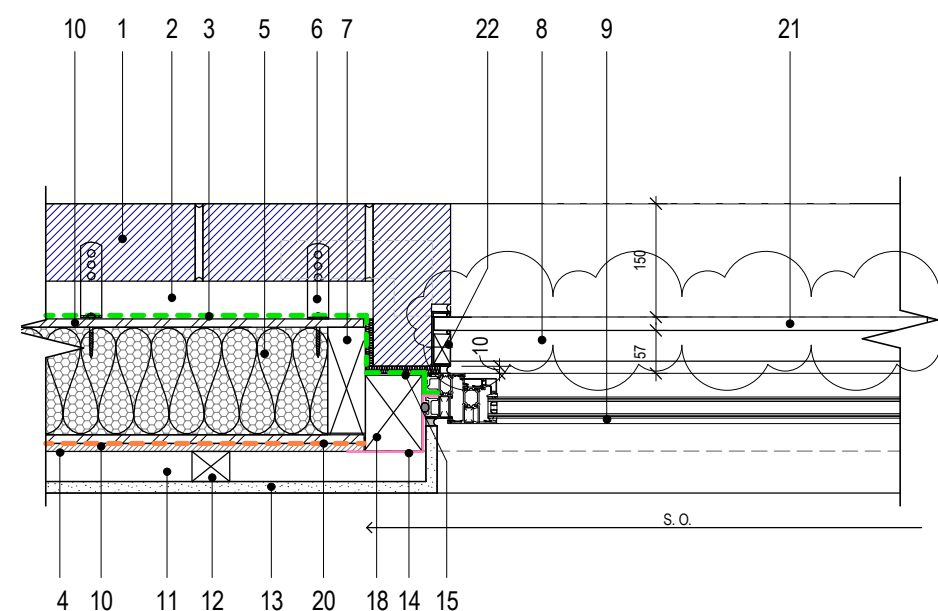
**NOTE: ALL DRAWINGS TO BE
 READ IN CONJUNCTION WITH
 CONTRACT SCOPE OF WORKS
 TO BE SHELL AND CORE ONLY.**

GENERAL KEY LEGEND

1. EXTERNAL BRICKWORK AS PER SPEC. F10/110
2. CAVITY 50mm
3. BREATHER MEMBRANE AS PER SPEC. P10/320
4. 12mm MGO BOARD (SIP PANEL AS PER SPEC.) BY INNOVARE
5. 140mm INSULATION (SIP PANEL AS PER SPEC.) BY INNOVARE
6. BRICK TIE WITH STAINLESS STEEL SCREW AS PER SPEC F30/236
7. TIMBER AND CAVITY CLOSER AS PER SPEC. F30/180
8. EXTERNAL CILL AS PER SPEC. L10 AND WINDOW MANUFACTURER SPEC.
9. WINDOW AS PER WINDOW SPECIALIST DETAIL AND SPEC. L10/330
10. 11mm OSB BOARD (SIP PANEL AS PER SPEC.) BY INNOVARE
11. 40mm CAVITY
12. 40x40mm TIMBER FIXING BATTENS AS PER SPEC. K10/205/Z10
13. 15mm PLASTERBOARD AS PER SPEC. K10/205
14. EPDM MEMBRANE AS PER WINDOW MANUFACTURER SPEC.
15. BREATHER MEMBRANE FIXING TAPE AS PER SPEC. P10/320
16. BRICK SLIP LINTEL - AS PER SPEC. F30/755B AND S.E. LINTER SCHEDULE
17. CAVITY TRAY AS PER SPEC. F30/345A
18. 75x100mm TIMBER BATTEN FIXED TO PANEL
19. TIMBER CILL AS PER SPEC.
20. VCL (VAPOUR CONTROL LAYER) AS PER SPEC. P10/310
21. FRAMLESS TOUGHENED LAMINATED GLASS JULIETE BALCONY RAILING
22. PPC ALUMINIM GLAZING PROFILE



Typical Window Cill & Lintel Detail
 Scale 1:10



Typical Window Jamb Detail
 Scale 1:10

REV	BY	DATE	DESCRIPTION
5_4	LB	23.12.16	Minor amendments to glazed balustrade
5_3	LB	07.12.16	NBS & Minor Amendments
5_2	LB	30.11.16	Details amended
5_1	JS	04.10.16	FIRST CONSTRUCTION ISSUE

REV	BY	DATE	DESCRIPTION

STATUS

STAGE 5 - FOR CONSTRUCTION

CONTRACTOR

GOLDSMITH

PROJECT

12456 - 81a/b BAYHAM STREET

CLIENT

REV 1

DRAWING TITLE

Typical Window Jamb, Head and Cill Detail

DATE CREATED	DATE AMENDED	SCALE
08.07.16	23.12.16	1:10@A3
DRAWN BY	AMENDED BY	CHECKED
JS	LB	JK

DRAWING NO & REVISION

12456-SPR-RES-48_03-5_4

First Floor, 20 Northdown Street
 London N1 9BG

T +44 (0)20 7833 3555
 F +44 (0)20 7837 0296

