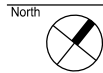
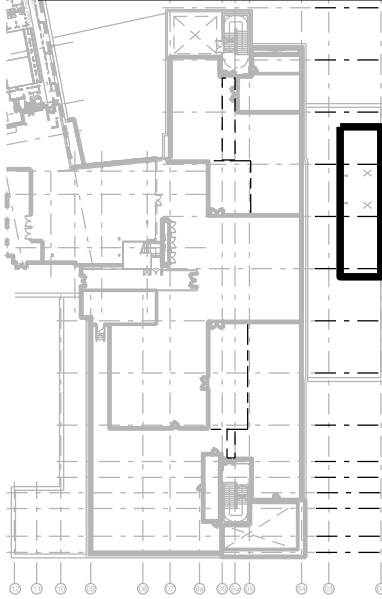


Birds eye view of Theatre plant Pergola from South East
Refer to 90_2B_15 for External planting



Notes
All dimensions to be checked on site. Do not scale from this drawing
Report any discrepancies and omissions to LD
All dimensions are shown in mm unless otherwise stated
Refer to drawing issue sheet for purpose of issue
If in doubt ask
This drawing is Copyright ©
This detail has been developed from Radmat drawing RAD-PQ-108
in accordance with Radmat's insurance backed guarantee.

Key Plan



47_2B_D_L4_12

C3	Issued under DCR A-131 for approval Discharge of Condition 5	27.11.15	LD
C2	Visual update	26.03.15	LD
C1	First issue	20.03.15	LD
No.	Description	Date	By
Revisions			

Structural Consultant	Services Consultant
	
Project Manager	Cost Consultant
	
Project Title	

Great Ormond Street Hospital Phase 2 B

Client

Great Ormond Street 
Hospital for Children
NHS Trust

Drawing Title

Pergola visual - Theatre Plant Birds eye from SE

Drawing number	Revision
47_2B_D_L4_12	C3

Scale @ A3	Drawn
	LD

Date
26.03.15